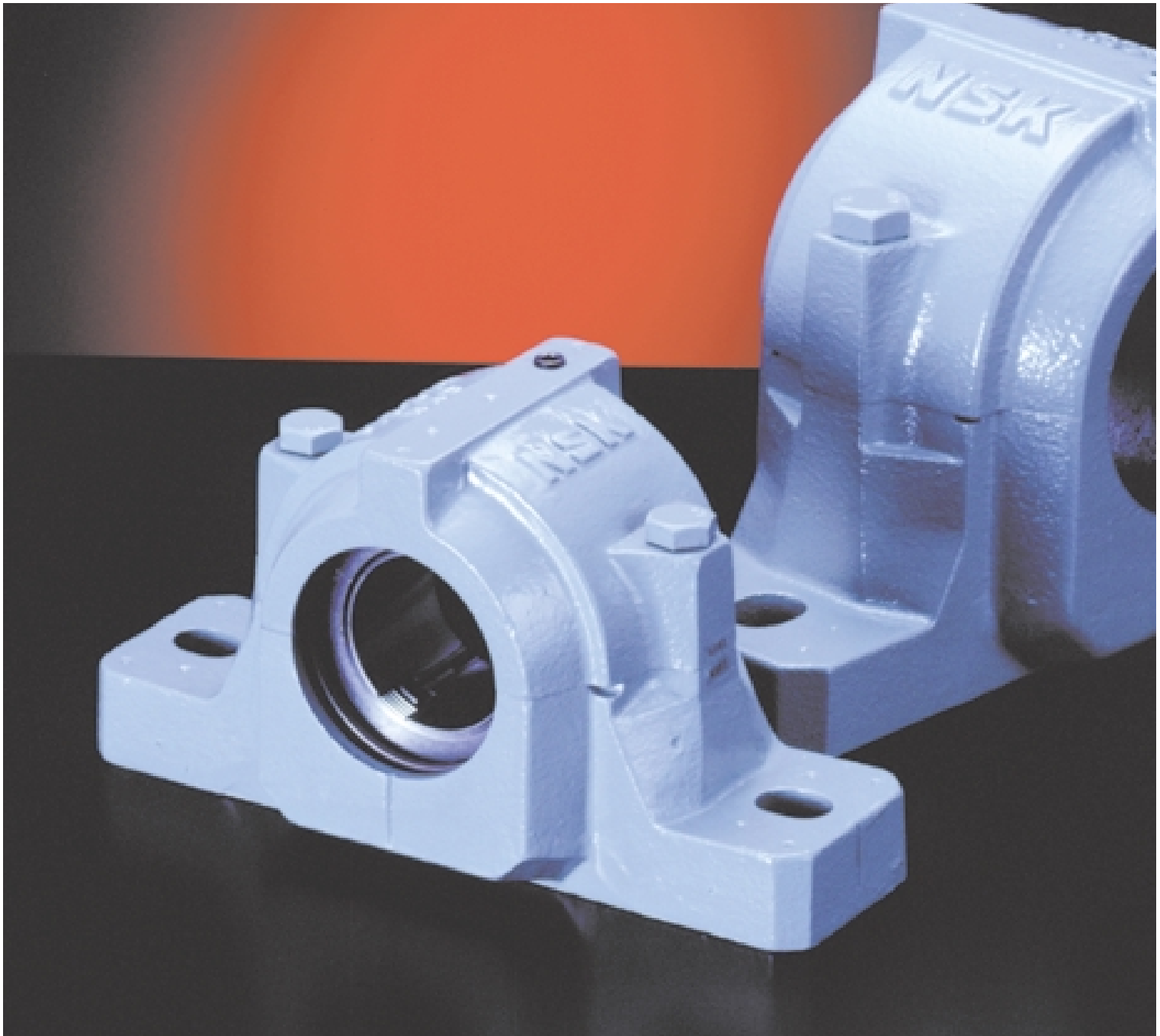
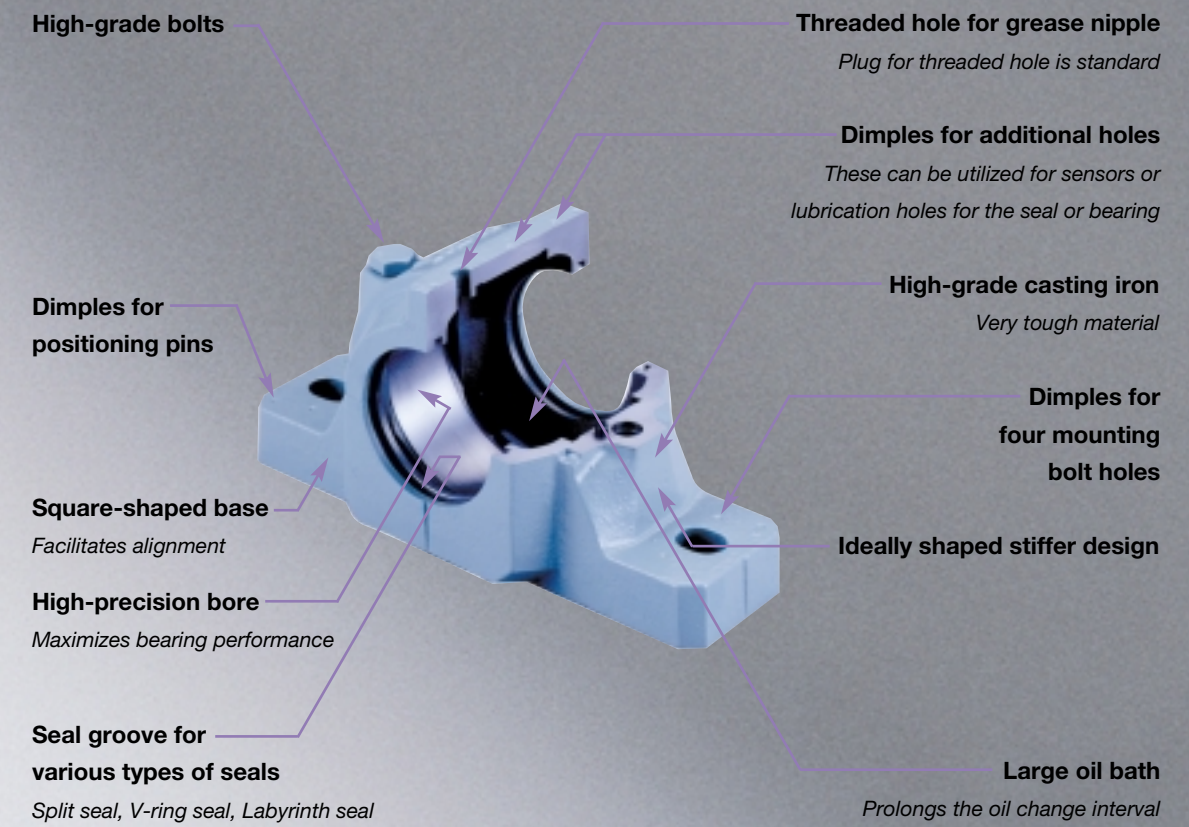
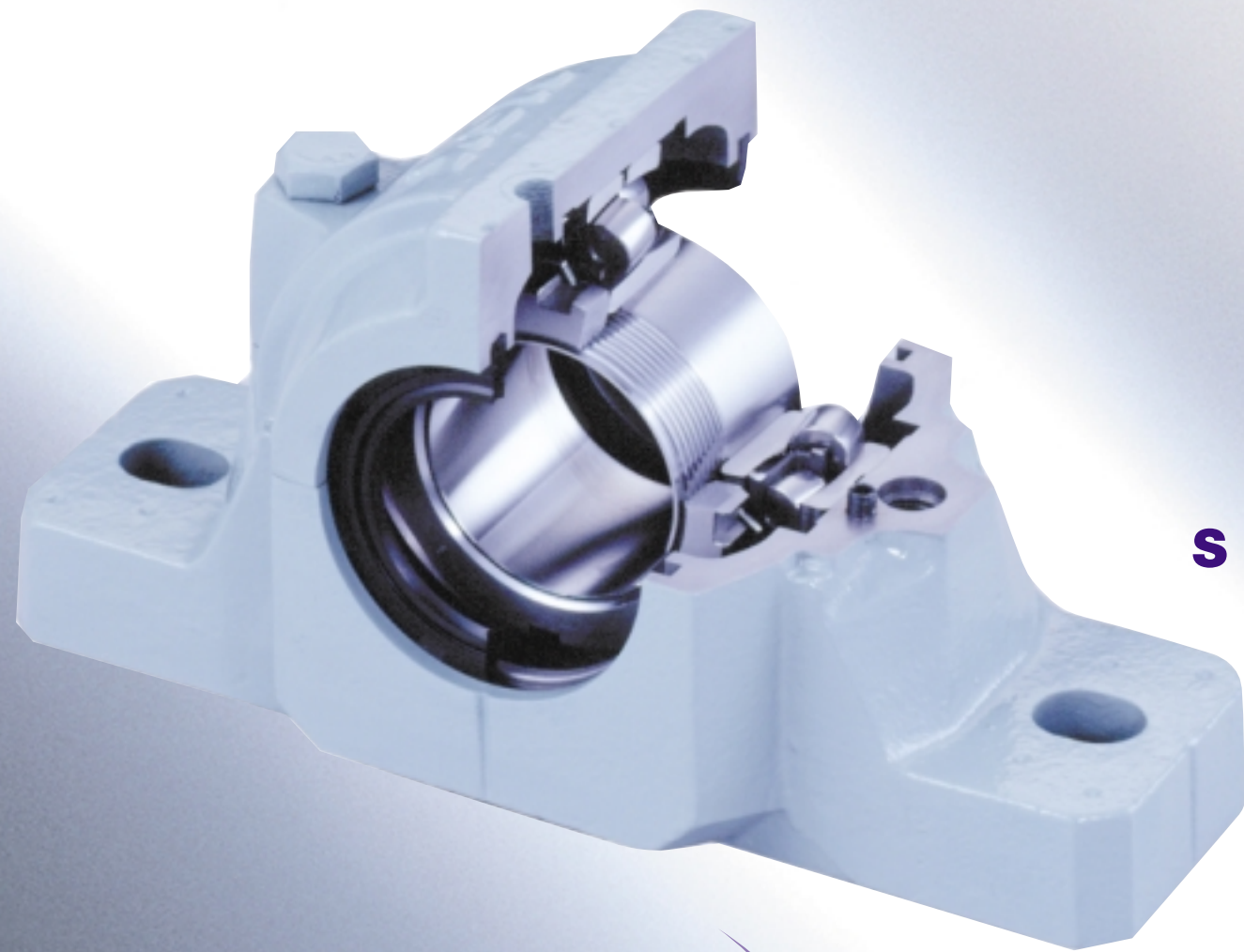


SNN Series Plummer Blocks

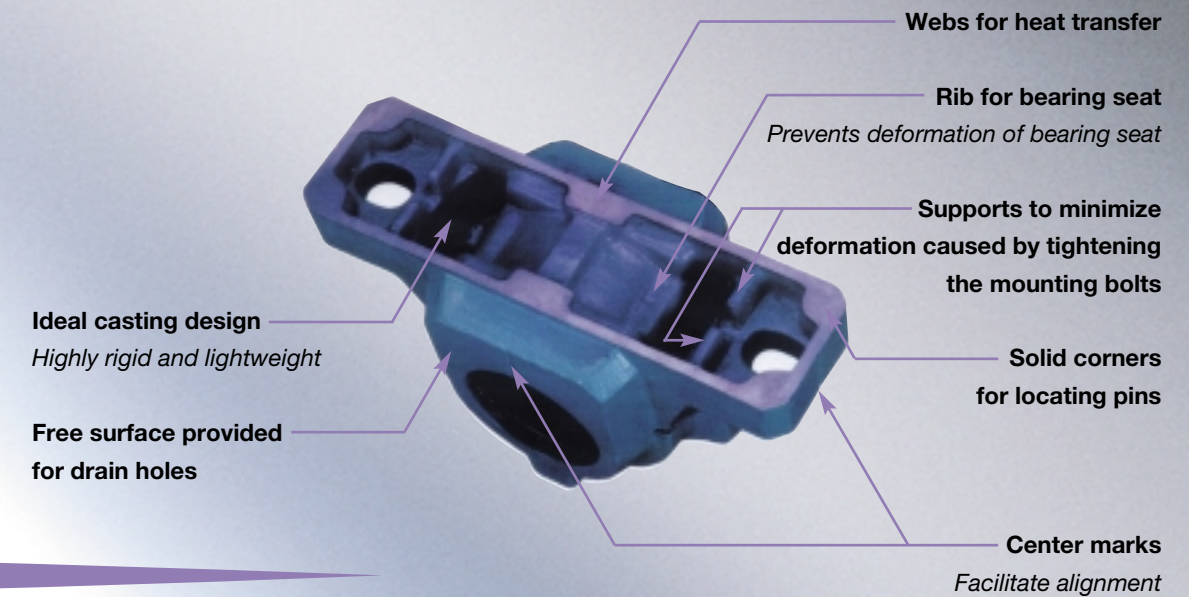
High-strength, easy-to-handle plummer blocks with high-capacity spherical roller bearings





S N N Series Plummer Blocks

High-performance SNN Series plummer blocks are highly rigid and easy to handle. They contain NSK's tough spherical roller bearings, which have high load capacity, low temperature rise and high-strength cages.



Easy and convenient mounting

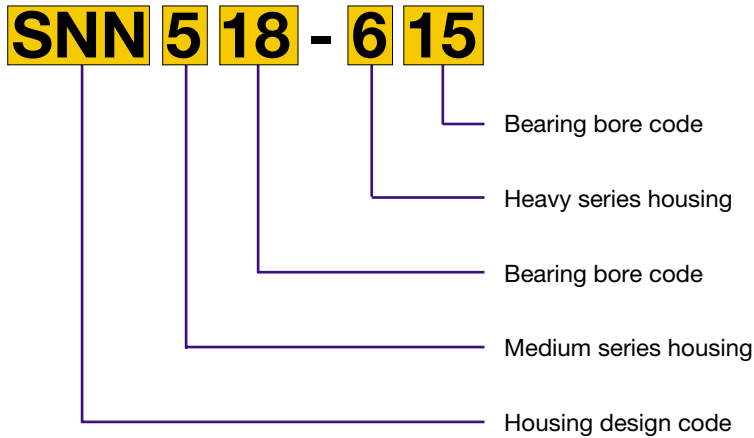
- Solid corners in the base for locating pins
- Free surface provided for drain holes
- Threaded hole for grease nipple
- Dimples for additional holes
- Square-shaped base and center marks to facilitate alignment
- Dimples for four mounting bolt holes

Performance

- High rigidity
(Minimizes deformation of the bearing seat)
- Webs for heat transfer
- Both grease and oil lubrication are possible
- Large oil bath
- The same plummer block can be used with spherical roller bearings in the 222xx and 223xx series

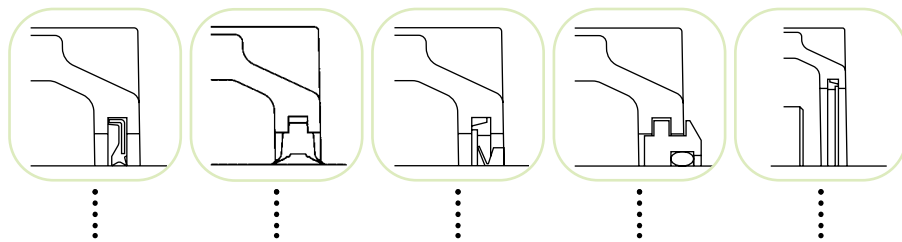
SNN Series Plummer Blocks

Housing No.



The SNN 500 and 600 series comprise a number of housings which, when combined with different seal options and ball or spherical roller bearings, provide an answer for most plummer block applications with shaft diameters ranging from 20 mm to 140 mm.

Seal types and their features

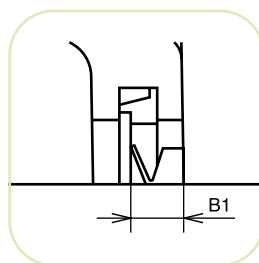


		Contact			Non-contact	
		U-LOK Seal	G-LOK Seal	V-RING Seal	TS-RING Seal	End Cover
Maximum speed		4 m/s	5 m/s	7 m/s	Bearing's limiting speed	-
Grease lubrication		Excellent	Excellent	Excellent	Good	-
Oil lubrication		Fair	Fair	Good	Excellent	-
Friction torque		Good	Good	Good	Excellent	-
Temperature range		-20 thru +80°C	-20 thru +80°C	-20 thru +80°C	-20 thru +120°C	-20 thru +120°C
Performance when exposed to	Dust	Excellent	Excellent	Excellent	Good	-
	Large particles	Good	Good	Poor	Good	-
	Water	Good	Good	Good	Poor	-

Seals

Shaft dia. d	Housing No.	U-LOK Seal	G-LOK Seal	V-RING Seal (B1: fitted width)	TS-RING Seal	End Cover
20	SNN505	U505	G505	V505 (6.0±0.8)	TS505	A505
	SNN506-605	U605	G605	V605 (6.0±0.8)	TS605	A605
25	SNN506-605	U506	G506	V506 (6.0±0.8)	TS506	A506
	SNN507-606	U606	G606	V606 (6.0±0.8)	TS606	A606
30	SNN507-606	U507	G507	V507 (6.0±0.8)	TS507	A507
	SNN508-607	U607	G607	V607 (6.0±0.8)	TS607	A607
35	SNN508-607	U508	G508	V508 (6.0±0.8)	TS508	A508
	SNN510-608	U608	G608	V608 (6.0±0.8)	TS608	A608
40	SNN509	U509	G509	V509 (7.0±1.0)	TS509	A509
	SNN511-609	U609	G609	V609 (7.0±1.0)	TS609	A609
45	SNN510-608	U510	G510	V510 (7.0±1.0)	TS510	A510
	SNN512-610	U610	G610	V610 (7.0±1.0)	TS610	A610
50	SNN511-609	U511	G511	V511 (7.0±1.0)	TS511	A511
	SNN513-611	U611	G611	V611 (7.0±1.0)	TS611	A611
55	SNN512-610	U512	G512	V512 (7.0±1.0)	TS512	A512
	SNN515-612	U612	G612	V612 (7.0±1.0)	TS612	A612
60	SNN513-611	U513	G513	V513 (7.0±1.0)	TS513	A513
	SNN516-613	U613	G613	V613 (7.0±1.0)	TS613	A613
65	SNN515-612	U515	G515	V515 (7.0±1.0)	TS515	A515
	SNN518-615	U615	G615	V615 (7.0±1.0)	TS615	A615
70	SNN516-613	U516	G516	V516 (9.0±1.2)	TS516	A516
	SNN519-616	U616	G616	V616 (9.0±1.2)	TS616	A616
75	SNN517	U517	G517	V517 (9.0±1.2)	TS517	A517
	SNN520-617	U617	G617	V617 (9.0±1.2)	TS617	A617
80	SNN518-615	U518	G518	V518 (9.0±1.2)	TS518	A518
85	SNN519-616	U519	G519	V519 (9.0±1.2)	TS519	A519
	SNN522-619	U619	G619	V619 (9.0±1.2)	TS619	A619
90	SNN520-617	U520	G520	V520 (9.0±1.2)	TS520	A520
	SNN524-620	U620	G520	V620 (9.0±1.2)	TS620	A620
100	SNN522-619	U522	G522	V522 (9.0±1.2)	TS522	A522
110	SNN524-620	U524	G524	V524 (10.5±1.5)	TS524	A524
115	SNN526	U526	G526	V526 (10.5±1.5)	TS526	A526
125	SNN528	U528	G528	V528 (10.5±1.5)	TS528	A528
135	SNN530	U530	G530	V530 (10.5±1.5)	TS530	A530
140	SNN532	U532	G532	V532 (10.5±1.5)	TS532	A532

⋮

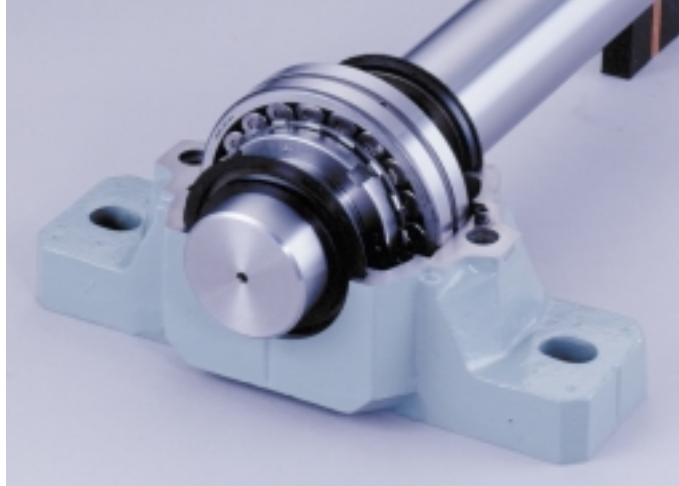


Mounting of SNN Plummer Blocks using U-LOK or G-LOK Seals



- 1 Remove the top half of the bearing housing to expose the bearing seat.
- 2 Place the housing base in position and hand tighten the fixing bolts.
- 3 The U-LOK (G-LOK) Kit includes four halves (2 seals). Fit the halves into the seal grooves machined in the base and top of the housing. To aid the lubrication of the running lips and sealing properties of U-LOK (G-LOK), fill the u-section of the seal with grease.
- 4 Mount the bearing on the shaft and charge with grease.
- 5 Place the shaft and bearing assembly on the lower half of the split housing.
- 6 For the housing set that locates the system, fit the locating rings on either side of the bearing or, where only one is supplied, fit it on the same side as the locking nut for the tapered sleeve.
- 7 Check the housings for alignment with each other, ensuring that they are within acceptable limits and that the fixing bolts are tightened enough to secure the base.
- 8 The top half of the housing should be carefully aligned with the locating dowel pins and the bolts tightened. Be sure that the split housing is paired only with its original top half, as these parts are not interchangeable from one housing to another.
- 9 The fixing bolts can then be fully tightened.

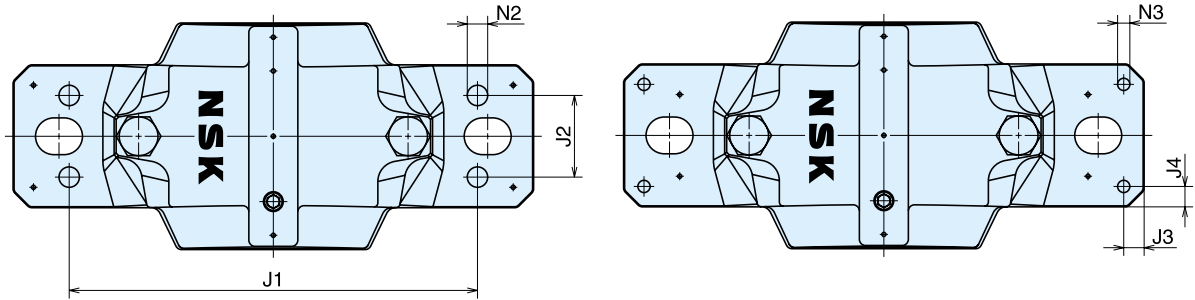
Mounting of SNN Plummer Blocks with open V-RING Seals



- 1 Remove the top half of the bearing housing to expose the bearing seat.
- 2 Place the housing base in position and hand tighten the fixing bolts.
- 3 Place a V-RING and counterface washer on the shaft. The counterface washer should be positioned to align with the seal groove machined in the housing and the V-RING.
- 4 Mount the bearing on the shaft and charge with grease.
- 5 Place the second V-RING and counterface washer on the shaft.
- 6 The shaft and bearing assembly with the sealing components can then be lowered into the base of the housing, taking care to locate the rubber lip of the counterface washer in the split housing seal groove.
- 7 For the housing set that locates the system, fit the locating rings on either side of the bearing or, where only one is supplied, fit it on the same side as the locking nut for the tapered sleeve.
- 8 Check the housings for alignment with each other, ensuring that they are within acceptable limits and that the fixing bolts are tightened enough to secure the base.
- 9 The top half of the housing should be carefully aligned with the locating dowel pins and the bolts tightened. Be sure that the split housing is paired only with its original top half, as these parts are not interchangeable from one housing to another.
- 10 The fixing bolts can then be fully tightened.
- 11 The rubbing surfaces of the counterface washer should be smeared with grease to help reduce friction.
- 12 To ensure effective sealing, the V-RINGS should then be moved axially along the shaft until their sealing lips are in the correct location relative to the washers. A convenient way of moving the V-RINGS along the shaft is to use the shank of a long screwdriver while rotating the shaft and working the V-RING into position by hand. See page 4 for the fitted width which will ensure that the correct lip pressure is applied to the wiping face.

SNN Series Plummer Blocks

Recommended dimensions



**Recommended dimensions
for 4-bolt fixing holes (mm)**

Housing No.	J1	J2	N2	Bolt Size
SNN 508-607	160	34	11	M10
SNN 509	160	34	11	M10
SNN 510-608	160	34	11	M10
SNN 511-609	200	40	14	M12
SNN 512-610	200	40	14	M12
SNN 513-611	210	48	14	M12
SNN 515-612	220	48	14	M12
SNN 516-613	244	52	18	M16
SNN 517	254	52	18	M16
SNN 518-615	275	58	18	M16
SNN 519-616	275	58	18	M16
SNN 520-617	300	66	18	M16
SNN 522-619	320	74	18	M16
SNN 524-620	320	74	18	M16
SNN 526	355	84	22	M20
SNN 528	400	92	26	M24
SNN 530	430	100	26	M24
SNN 532	450	100	26	M24

**Recommended dimensions
for locating pin holes (mm)**

Housing No.	J3	J4	N3 Max.
SNN 505	7	7	6
SNN 506-605	8	8	6
SNN 507-606	8	8	6
SNN 508-607	9	9	8
SNN 509	9	9	8
SNN 510-608	9	9	8
SNN 511-609	10	10	10
SNN 512-610	10	10	10
SNN 513-611	12	12	10
SNN 515-612	12	12	10
SNN 516-613	15	15	12
SNN 517	15	15	12
SNN 518-615	15	15	12
SNN 519-616	15	15	12
SNN 520-617	15	15	12
SNN 522-619	18	18	16
SNN 524-620	18	18	16
SNN 526	18	18	16
SNN 528	18	18	16
SNN 530	18	18	16
SNN 532	18	18	16

ORDER FORM FOR NSK SNN SERIES PLUMMER BLOCKS

Company		Date	
Address			
Contact			
Fax No.		Phone No.	
Application		Drawing No.	
Shaft size \varnothing mm			
Housing Order No.	SNN		Qty.
Bearings	Spherical roller bearing	No.	Qty.
	Self-aligning ball bearing	No.	Qty.
Type of seals	<input type="checkbox"/> U-LOK	No.	Qty.
	<input type="checkbox"/> G-LOK	No.	Qty.
	<input type="checkbox"/> V-RING	No.	Qty.
	<input type="checkbox"/> TS-RING	No.	Qty.
	<input type="checkbox"/> End Cover	No.	Qty.
Adapters		No.	Qty.
Fixing rings		No.	Qty.