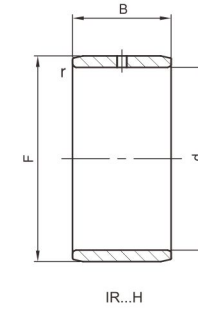
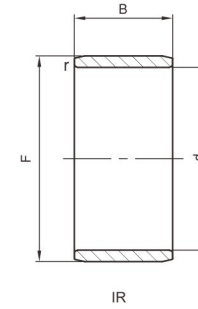


軸徑	軸承型號 Series	單位重 Weight	r	配合軸承型號 Suitable Bearing Designaton
mm	IR d X F X B	g	min.	
8	IR 8 X 12 X 10	4.8	0.3	
	※IR 8 X 12 X 10.5	4.9	0.3	
	※IR 8 X 12 X 26.5	5.2	0.3	
9	IR 9 X 12 X 12	4.4	0.3	RNAO 12X22X12 ; NK 12/12
	IR 9 X 12 X 16	6	0.3	NK 12/16
10	IR 10 X 13 X 12.5	5.2	0.3	
	IR 10 X 14 X 12	7.3	0.3	
	IR 10 X 14 X 12.5	7.5	0.3	
	IR 10 X 14 X 13	7.4	0.3	RNA 4900
	IR 10 X 14 X 14H	8.2	0.3	RNA 4900-2RS
	IR 10 X 14 X 16	9.2	0.3	NK 14/16
	IR 10 X 14 X 16.5	9.4	0.3	
	IR 10 X 14 X 20	11.5	0.3	NK 14/20
	※IR 10 X 15 X 10.5	7.9	0.3	
	IR 10 X 15 X 12.5	8.1	0.3	
	IR 10 X 15 X 13	8.1	0.3	

(1)軸承型號後綴H表示有一個油孔。
H-With lubrication hole

(2)標※者為非暢銷規格品, 需經濟批量訂購生產。
Marked ※ are produced by order.

軸徑	軸承型號 Series	單位重 Weight	r	配合軸承型號 Suitable Bearing Designaton
mm	IR d X F X B	g	min.	
10	※IR 10 X 15 X 20.5	15.5	0.3	
	※IR 10 X 15 X 25.5	19.3	0.3	
12	IR 12 X 15 X 12.5	6.1	0.3	
	IR 12 X 15 X 16	7.6	0.3	
	IR 12 X 15 X 16.5	8.1	0.3	
	IR 12 X 15 X 22.5	10.9	0.3	
	IR 12 X 16 X 12	7.9	0.3	RNAO 16X28X12
	IR 12 X 16 X 12.5	8.5	0.3	
	IR 12 X 16 X 13	8.5	0.3	RNA4901 ; RNAO 16X24X13
	IR 12 X 16 X 14H	9.4	0.3	RNA 4901-2RS
	IR 12 X 16 X 16	10.7	0.3	NK 16/16
	※IR 12 X 16 X 16.5	11.2	0.3	
	IR 12 X 16 X 20	13.5	0.3	RNAO 16X24X20W ; NK 16/20
	IR 12 X 16 X 20.5	13.9	0.3	
	IR 12 X 16 X 22	14.9	0.3	RNA 6901
	※IR 12 X 16 X 22.5	15.2	0.3	

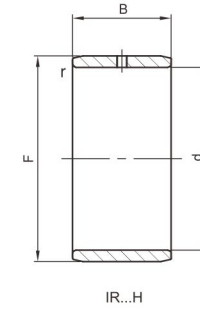
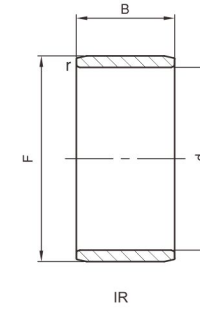


軸徑	軸承型號 Series	單位重 Weight	r	配合軸承型號 Suitable Bearing Designaton
mm	IR d X F X B	g	min.	
12	※IR 12 X 17 X 15.5	13.6	0.3	
	※IR 12 X 17 X 20.5	18	0.3	
	※IR 12 X 17 X 25.5	19	0.3	
14	IR 14 X 17 X 17	9.5	0.3	
15	IR 15 X 18 X 12.5	7.2	0.3	
	IR 15 X 18 X 15.5	9.3	0.3	
	IR 15 X 18 X 16.5	9.8	0.3	
	※IR 15 X 18 X 25.5	15.2	0.3	
	IR 15 X 19 X 16	12.9	0.3	NK 19/16
	IR 15 X 19 X 16.5	13.6	0.3	
	IR 15 X 19 X 20	16	0.3	NK 19/20
	IR 15 X 19 X 20.5	16.5	0.3	
	IR 15 X 20 X 12	12.2	0.3	RNAO 20X32X12
	IR 15 X 20 X 13	13.5	0.3	RNA 4902 ; RNAO 20X28X13
	IR 15 X 20 X 14H	14.6	0.3	RNA 4902-2RS
	IR 15 X 20 X 15.5	16.4	0.3	

(1) 軸承型號後綴H表示有一個油孔。
H-With lubrication hole

(2) 標※者為非暢銷規格品, 需經濟批量訂購生產。
Marked ※ are produced by order.

軸徑	軸承型號 Series	單位重 Weight	r	配合軸承型號 Suitable Bearing Designaton
mm	IR d X F X B	g	min.	
15	IR 15 X 20 X 18	19.5	0.3	RNA 5902
	IR 15 X 20 X 20.5	21.5	0.3	
	IR 15 X 20 X 23	24.4	0.3	RNA 6902
	※IR 15 X 20 X 30.5	27.5	0.3	
17	IR 17 X 20 X 16.5	11.1	0.3	
	IR 17 X 20 X 20	13.5	0.3	
	IR 17 X 20 X 20.5	13.8	0.3	
	IR 17 X 20 X 30.5	20.5	0.3	
	IR 17 X 21 X 16	15	0.3	NK 21/16
	※IR 17 X 21 X 16.5	15.5	0.3	
	IR 17 X 21 X 20	18	0.3	NK 21/20
	IR 17 X 22 X 13	14.9	0.3	RNA 4903 ; RNAO 22X30X13
	IR 17 X 22 X 14H	16.4	0.3	RNA 4903-2RS
	※IR 17 X 22 X 15.5	18.3	0.3	
	IR 17 X 22 X 16	18.4	0.3	
	※IR 17 X 22 X 16.5	19.1	0.3	

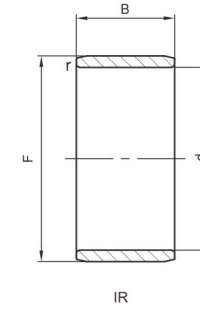


軸徑	軸承型號 Series	單位重 Weight	r	配合軸承型號 Suitable Bearing Designaton
mm	IR d X F X B	g	min.	
17	※IR 17 X 22 X 18	20.5	0.3	
	IR 17 X 22 X 23	27.1	0.3	RNA 6903
	※IR 17 X 22 X 25.5	29.3	0.3	
	IR 17 X 24 X 20	33.8	0.3	NKS 24
20	IR 20 X 24 X 16	15	0.3	NK 24/16
	※IR 20 X 24 X 16.5	17.5	0.3	
	IR 20 X 24 X 20	20.5	0.3	NK 24/20
	IR 20 X 24 X 20.5	22	0.3	
	IR 20 X 25 X 12	15.8	0.3	
	IR 20 X 25 X 12.5	16.3	0.3	
	IR 20 X 25 X 15.5	21	0.3	
	IR 20 X 25 X 16	22	0.3	RNAO 25X37X16
	IR 20 X 25 X 17	23	0.3	RNA 4904 ; RNAO 25X35X17
	IR 20 X 25 X 18H	24.5	0.3	RNA 4904-2RS
	IR 20 X 25 X 20.5	27.5	0.3	
	IR 20 X 25 X 23	31	0.3	RNA 5904

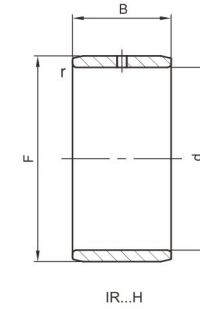
(1)軸承型號後綴H表示有一個油孔。
H-With lubrication hole

(2)標※者為非暢銷規格品, 需經濟批量訂購生產。
Marked ※ are produced by order.

軸徑	軸承型號 Series	單位重 Weight	r	配合軸承型號 Suitable Bearing Designaton
mm	IR d X F X B	g	min.	
20	IR 20 X 25 X 25.5	34.5	0.3	
	IR 20 X 25 X 26	36	0.3	
	IR 20 X 25 X 30	40.4	0.3	RNA 6904
	IR 20 X 25 X 30.5	41	0.3	
	IR 20 X 25 X 32	44	0.3	RNAO 25X37X32W
	※IR 20 X 28 X 20	45.2	0.3	NKS 28
22	IR 22 X 26 X 16	18.2	0.3	NK 26/16
	※IR 22 X 26 X 16.5	19.5	0.3	
	IR 22 X 26 X 20	23	0.3	NK 26/20
	※IR 22 X 26 X 20.5	24.5	0.3	
	IR 22 X 28 X 17	29.5	0.3	RNA 49/22
	IR 22 X 28 X 20	36	0.3	
	※IR 22 X 28 X 20.5	37	0.3	
	IR 22 X 28 X 30	54.4	0.3	RNA 69/22
	※IR 22 X 28 X 30.5	55	0.3	
25	IR 25 X 29 X 15	22	0.3	NK 29X38X15



IR



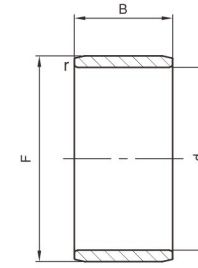
IR...H

軸徑	軸承型號 Series	單位重 Weight	r	配合軸承型號 Suitable Bearing Designaton
mm	IR d X F X B	g	min.	
25	IR 25 X 29 X 20	25.9	0.3	NK 29/20
	※IR 25 X 29 X 20.5	38	0.3	
	IR 25 X 29 X 30	39.9	0.3	NK 29/30
	※IR 25 X 29 X 30.5	40	0.3	
	IR 25 X 30 X 15.5	24.5	0.3	
	IR 25 X 30 X 16	25.7	0.3	RNAO 30X42X16
	IR 25 X 30 X 17	27.4	0.3	RNA 4905 ; RNAO 30X40X17
	IR 25 X 30 X 18H	29.8	0.3	RNA 4905-2RS
	IR 25 X 30 X 20	32.8	0.3	
	IR 25 X 30 X 20.5	33.4	0.3	
	IR 25 X 30 X 23	38	0.3	RNA 5905
	IR 25 X 30 X 25.5	42.5	0.3	
	IR 25 X 30 X 26	44	0.3	RNAO 30X40X26W
	IR 25 X 30 X 30	53	0.3	RNA 6905
	IR 25 X 30 X 30.5	54	0.3	
※IR 25 X 30 X 32	56	0.3	RNAO 30X42X32W	

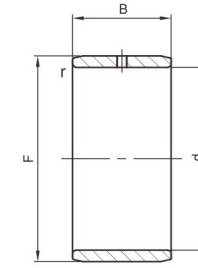
(1)軸承型號後綴H表示有一個油孔。
H-With lubrication hole

(2)標※者為非暢銷規格品, 需經濟批量訂購生產。
Marked ※ are produced by order.

軸徑	軸承型號 Series	單位重 Weight	r	配合軸承型號 Suitable Bearing Designaton	
mm	IR d X F X B	g	min.		
25	※IR 25 X 32 X 22	52.5	0.3	NKS 32	
	28	IR 28 X 32 X 17	24.5	0.3	RNA 49/28
		IR 28 X 32 X 20	28.5	0.3	NK 32/20
IR 28 X 32 X 20.5		29.5	0.3		
IR 28 X 32 X 30		43.5	0.3	RNA 69/28 ; NK 32/30	
※IR 28 X 32 X 30.5		44.5	0.3		
30		IR 30 X 35 X 12.5	24	0.3	
	IR 30 X 35 X 13	25	0.3	RNAO 35X45X13	
	IR 30 X 35 X 16	34	0.3	RNAO 35X47X16	
	IR 30 X 35 X 17	36	0.3	RNA 4906 ; RNAO 35X45X17	
	IR 30 X 35 X 18	35.1	0.3	RNAO 35X47X18	
	IR 30 X 35 X 18H	35.1	0.3	RNA 4906-2RS	
	IR 30 X 35 X 20	39	0.3	NK 35/20	
	IR 30 X 35 X 20.5	40	0.3		
	IR 30 X 35 X 23	49	0.3		
	※IR 30 X 35 X 26	50.4	0.3	RNAO 35X45X26W	



IR



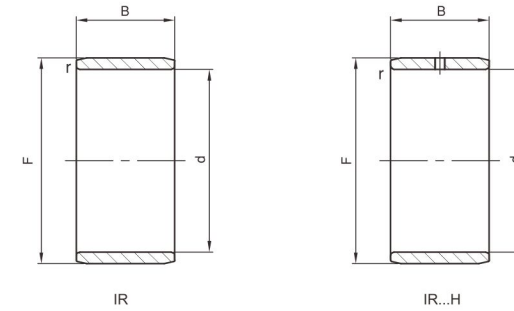
IR...H

軸徑	軸承型號 Series	單位重 Weight	r	配合軸承型號 Suitable Bearing Designaton
mm	IR d X F X B	g	min.	
30	IR 30 X 35 X 30	58.5	0.3	RNA 6906 ; NK 35/30
	※IR 30 X 35 X 30.5	59.5	0.3	
	IR 30 X 35 X 32	64	0.3	
	※IR 30 X 37 X 18	50	0.3	RNAO 37X52X18
	※IR 30 X 37 X 22	61.6	0.3	NKS 37
32	IR 32 X 37 X 20	43	0.6	NK 37/20
	※IR 32 X 37 X 20.5	44	0.6	
	IR 32 X 37 X 30	62	0.6	NK 37/30
	※IR 32 X 37 X 30.5	63	0.6	
	IR 32 X 40 X 20	69	0.6	RNA 49/32
35	IR 32 X 40 X 36	123	0.6	RNA 69/32
	※IR 35 X 40 X 17	37.8	0.6	RNAO 40X50X17
	IR 35 X 40 X 20	46	0.6	RNAO 40X55X20 ; NK 40/20
	IR 35 X 40 X 20.5	47	0.6	
	IR 35 X 40 X 30	67	0.6	NK 40/30
	IR 35 X 40 X 30.5	69	0.6	

(1)軸承型號後綴H表示有一個油孔。
H-With lubrication hole

(2)標※者為非暢銷規格品, 需經濟批量訂購生產。
Marked ※ are produced by order.

軸徑	軸承型號 Series	單位重 Weight	r	配合軸承型號 Suitable Bearing Designaton
mm	IR d X F X B	g	min.	
35	IR 35 X 42 X 20	63.9	0.6	RNA 4907
	IR 35 X 42 X 21H	68	0.6	RNA 4907-2RS
	IR 35 X 42 X 36	117	0.6	RNA 6907
	※IR 35 X 43 X 22	82	0.6	NKS 43
38	IR 38 X 43 X 20	48.1	0.6	NK 43/20
	IR 38 X 43 X 30	73.6	0.6	NK 43/30
40	IR 40 X 45 X 17	42.5	0.6	RNAO 45X55X17
	IR 40 X 45 X 20	51	0.6	NK 45/20
	IR 40 X 45 X 20.5	52.5	0.6	
	※IR 40 X 45 X 25.5	65.5	0.6	
	IR 40 X 45 X 30	77	0.6	NK 45/30
	IR 40 X 45 X 30.5	78.5	0.6	
	IR 40 X 48 X 22	91.6	0.6	RNA 4908
	IR 40 X 48 X 23H	97.5	0.6	RNA 4908-2RS
IR 40 X 48 X 30	123	0.6	RNA 5908	
	IR 40 X 48 X 40	170	0.6	RNA 6908

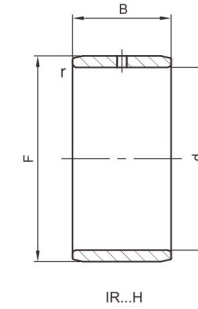
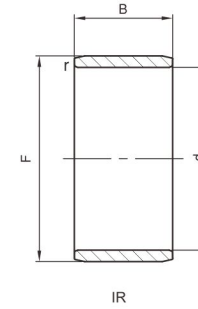


軸徑	軸承型號 Series	單位重 Weight	r	配合軸承型號 Suitable Bearing Designaton
mm	IR d X F X B	g	min.	
40	IR 40 X 50 X 20	106	0.6	RNAO 50X65X20
	IR 40 X 50 X 22	118	0.6	NKS 50
42	IR 42 X 47 X 20	52.8	0.6	NK 47/20
	IR 42 X 47 X 30	81	0.6	NK 47/30
45	IR 45 X 50 X 20	58	0.6	
	IR 45 X 50 X 25	71	0.6	NK 50/25
	※IR 45 X 50 X 25.5	73	0.6	
	IR 45 X 50 X 35	98	0.6	NK 50/35
	※IR 45 X 50 X 40.5	117	0.6	
	IR 45 X 52 X 22	89	0.6	RNA 4909
	IR 45 X 52 X 23H	93.9	0.6	RNA 4909-2RS
	IR 45 X 52 X 30	123	0.6	RNA 5909
	IR 45 X 52 X 40	164	0.6	RNA 6909
	※IR 45 X 55 X 22	129	0.6	NKS 55
50	※IR 50 X 55 X 20	62.5	0.6	RNAO 55X68X20
	IR 50 X 55 X 20.5	64	0.6	

(1) 軸承型號後綴H表示有一個油孔。
H-With lubrication hole

(2) 標※者為非暢銷規格品, 需經濟批量訂購生產。
Marked ※ are produced by order.

軸徑	軸承型號 Series	單位重 Weight	r	配合軸承型號 Suitable Bearing Designaton
mm	IR d X F X B	g	min.	
50	IR 50 X 55 X 25	78	0.6	NK 55/25
	IR 50 X 55 X 25.5	80	0.6	
	IR 50 X 55 X 35	112	0.6	NK 55/35
	IR 50 X 58 X 22	115	0.6	RNA 4910
	IR 50 X 58 X 23H	119	0.6	RNA 4910-2RS
	IR 50 X 58 X 30	159	0.6	RNA 5910
	IR 50 X 58 X 40	208	0.6	RNA 6910
	IR 50 X 60 X 20	128	0.6	RNAO 60X78X20
	IR 50 X 60 X 28	181	0.6	NKS 60
	※IR 50 X 60 X 40	265	0.6	RNAO 60X78X40W
	※IR 50 X 60 X 40.5	270	0.6	
	55	IR 55 X 60 X 25	85.5	0.6
IR 55 X 60 X 35		121	0.6	NK 60/35
IR 55 X 63 X 25		141	1.0	RNA 4911
IR 55 X 63 X 45		256	1.0	RNA 6911
※IR 55 X 65 X 28		198	1.0	NKS 65



軸徑	軸承型號 Series	單位重 Weight	r	配合軸承型號 Suitable Bearing Designaton
mm	IR d X F X B	g	min.	
55	※IR 55 X 65 X 30	220	1.0	RNAO 65X85X30
	IR 60 X 68 X 25	152	1.0	RNA 4912 ; NK 68/25
60	※IR 60 X 68 X 35	213	1.0	NK 68/35
	IR 60 X 68 X 45	276	1.0	RNA 6912
	※IR 60 X 70 X 28	235	1.0	NKS 70
	※IR 60 X 70 X 30	240	1.0	RNAO 70X90X30
65	IR 65 X 72 X 25	141	1.0	RNA 4913
	IR 65 X 72 X 45	259	1.0	RNA 6913
	※IR 65 X 73 X 25	164	1.0	NK 73/25
	※IR 65 X 73 X 35	231	1.0	NK 73/35
70	※IR 70 X 80 X 25	221	1.0	NK 80/25
	IR 70 X 80 X 30	267	1.0	RNA 4914 ; RNAO 80X100X30
	※IR 70 X 80 X 35	312	1.0	NK 80/35
	IR 70 X 80 X 54	488	1.0	RNA 6914
75	※IR 75 X 85 X 25	238	1.0	RNAO 85X105X25 ; NK 85/25
	※IR 75 X 85 X 30	287	1.0	RNA 4915

軸徑	軸承型號 Series	單位重 Weight	r	配合軸承型號 Suitable Bearing Designaton
mm	IR d X F X B	g	min.	
75	※IR 75 X 85 X 35	336	1.0	NK 85/35
	※IR 75 X 85 X 54	520	1.0	RNA 6915
80	※IR 80 X 90 X 25	253	1.0	NK 90/20
	※IR 80 X 90 X 30	304	1.0	RNA 4916 ; RNAO 90X110X30
	※IR 80 X 90 X 35	355	1.0	NK 90/35
	※IR 80 X 90 X 54	556	1.0	RNA 6916
85	※IR 85 X 95 X 26	277	1.0	NK 95/26
	※IR 85 X 95 X 36	388	1.0	NK 95/36
	※IR 85 X 100 X 35	582	1.0	RNA 4917
	※IR 85 X 100 X 63	1054	1.0	RNA 6917
90	※IR 90 X 100 X 26	294	1.0	NK 100/26
	※IR 90 X 100 X 30	340	1.0	RNAO 100X120X30
	※IR 90 X 100 X 36	406	1.0	NK 100/36

(1) 軸承型號後綴H表示有一個油孔。
H-With lubrication hole

(2) 標※者為非暢銷規格品, 需經濟批量訂購生產。
Marked ※ are produced by order.