

ROBOT MODULE™ MR SERIES

High precision motor ready linear system adaptable to common motor sizes including NEMA 23 and 34 and 60mm metric frame motors.



Quick Reference



RS Module
Pages 12 & 13



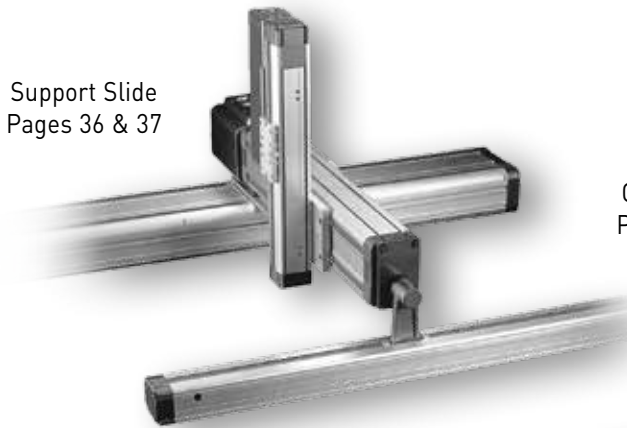
RM Module
Page 15



Combining Brackets
Pages 38 to 40



RH Module
including extended stroke
Pages 16 & 17



Support Slide
Pages 36 & 37

Multi Axis
Combinations
Pages 22 to 35



Motor Mounting
Kit
Pages 18 & 19

Table of Contents

General information, features, module construction, and CAD data downloads	4
Product line	5
Application examples.....	6
Reference numbers, motor mounting positions and list of modules.....	8
Single axis selection.....	10
RS Module - Left motor mount	12
RS Module - Right motor mount.....	13
RM module.....	15
RH module.....	16
RH EXT stroke module	17
Motor mounting kits.....	18
Motor interface dimensions	20
2 Axis combination overview.....	22
Combination type: RG-MS.....	23
Combination type: RG-HM.....	24
Combination type: RD-MS.....	26
Combination type: RD-HM.....	27
Combination type: RX-HM.....	28
Combination type: RX-HH.....	29
Combination type: RC-MS	30
3 Axis combination overview.....	31
Combination type: RP-HMS	32
Combination type: RP-MSS.....	34
Combination type: RJ-HMS.....	35
Accessory support slide for combination types: RG-HM & RP-HMS.....	36
Combining brackets.....	38
Module mounting plates.....	41
Limit sensor kits.....	42
Square nut for module t-slots.....	43

General, Features, Module Construction and CAD Downloads

General

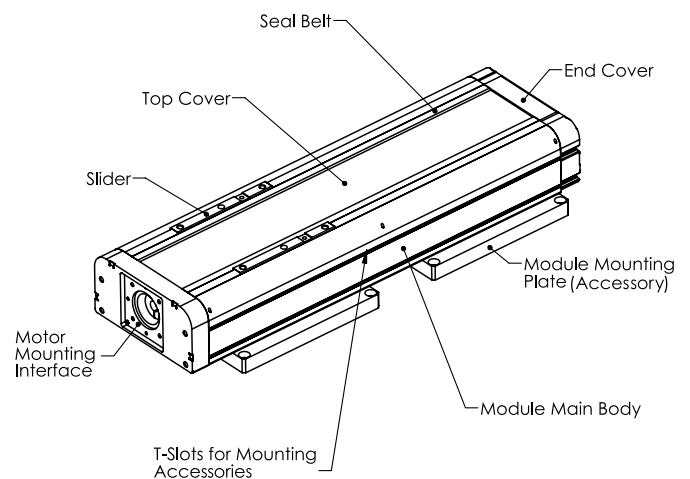
Robot Modules are complete linear axis high precision systems for semiconductor, electronic, medical and automated assembly and production applications. High-quality NSK Linear Guides, NSK Ball Screws and NSK Monocarriers ensure high level of mechanical reliability and U.S. manufacturing results in faster product delivery. NSK offers this sophisticated technology in an ergonomic design enclosed in an aluminum housing. The motorless design of these Robot Modules allows users the flexibility to choose their preferred motors when designing new systems or automating existing processes.

Features

Utilization of NSK Robot Modules provides the following advantages:

- NSK components ensure high mechanical reliability of each axis resulting in systems with high rigidity, long life and smooth motion.
- Reduced time and labor costs associated with a pre-assembled axis.
- 3 different types available - RS (small), RM (medium) and RH (heavy) to meet application stroke and payload requirements.
- Standard patented K1™ Lubrication Units on the NSK Ball Screws, Linear Guides and Monocarriers provide maintenance-free operation up to 10,000 km or 5 years.
- Combination brackets are available for attaching individual Robot Modules together into two- or three-axes configurations.
- Module Mounting Plates are available for attaching Robot Modules to your machine.
- Motor Mounting Kits are available for 60mm metric frame, NEMA 23 and NEMA 34 motor interfaces.
- Optional Stroke Limit and Home Position sensor kits.
- Motorless design offers user flexibility for motors of choice.
- Most Robot Modules sizes available from stock.
- Equipped with seal belt for dust proofing.

Module Construction



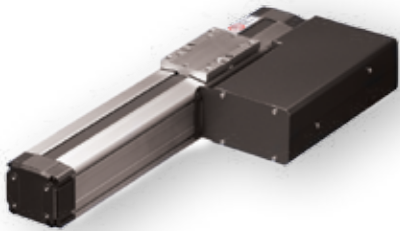
CAD Data Downloads

To make it easy for you to obtain 2D/3D CAD files and technical information for NSK's Robot Modules, NSK has partnered with Solid Components. Visit NSK's website (www.nskamericas.com) and click on Services and then Technical Tools to download.

Product Line



Multi Axis Combinations
(Pages 22 to 35)



RS Module
(Pages 12 & 13)



RM Module
(Page 15)



RH Module
(Pages 16 & 17)



Motor Mounting Kit
(Pages 18 & 19)



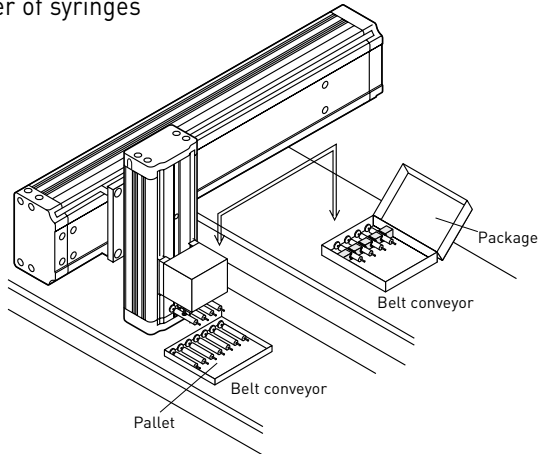
Support Slide
(Pages 36 & 37)



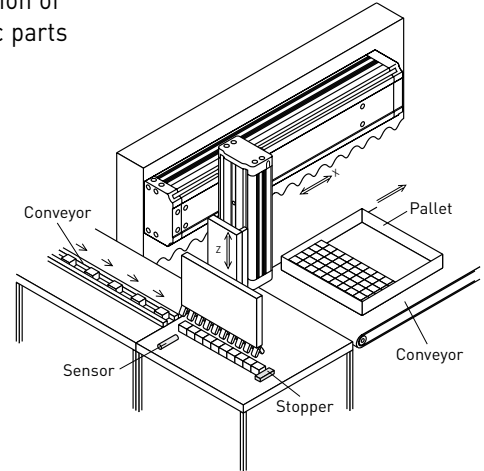
Combining Brackets
(Pages 38 to 40)

Application Examples

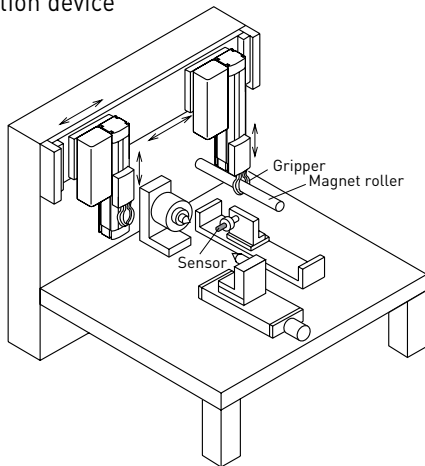
1-Transfer of syringes



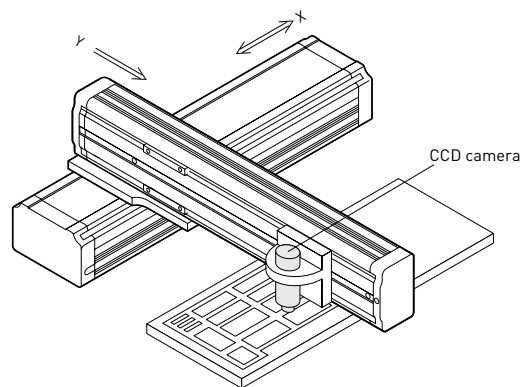
2-Palletization of electronic parts



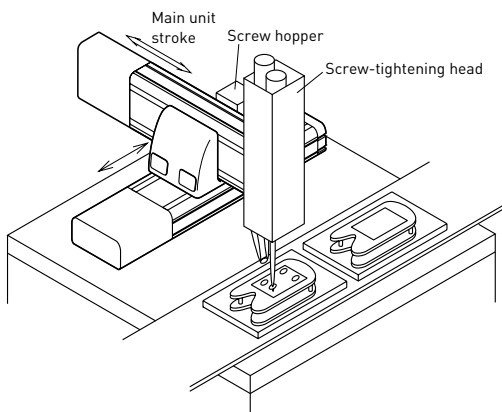
3-Loader/unloader for inspection device



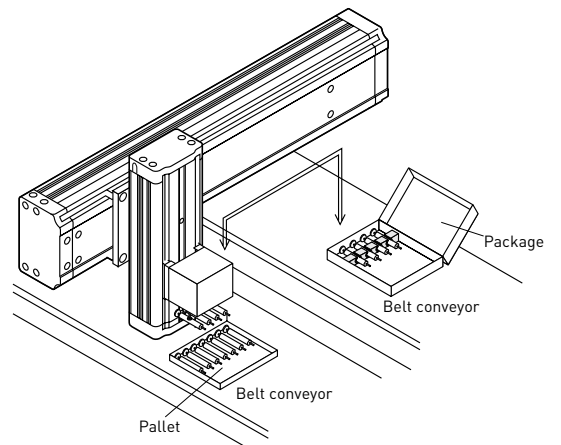
4-Loader/unloader for inspection device



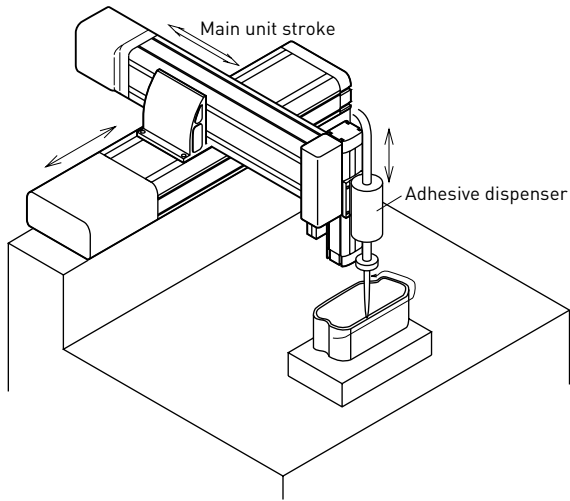
5-Screw-tightening machine in assembly line



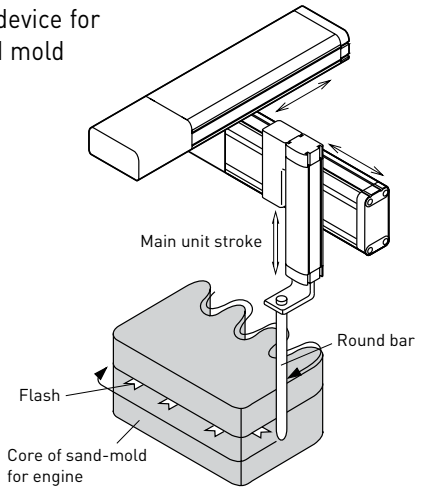
6-Work feed in stamping machine



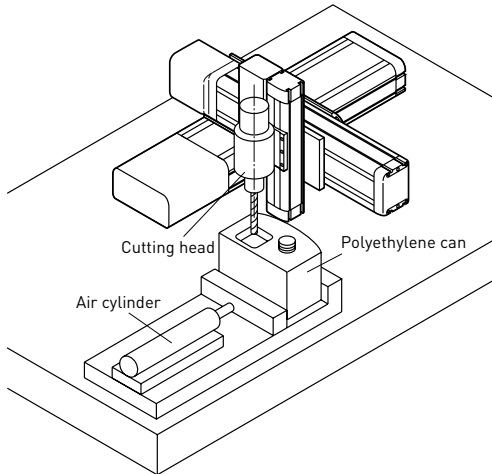
7-Automobile taillight bonding



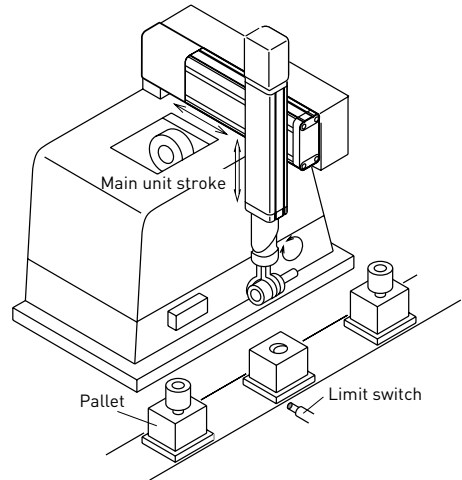
8-Deflashing device for core of sand mold



9-Polyethylene can processing machine

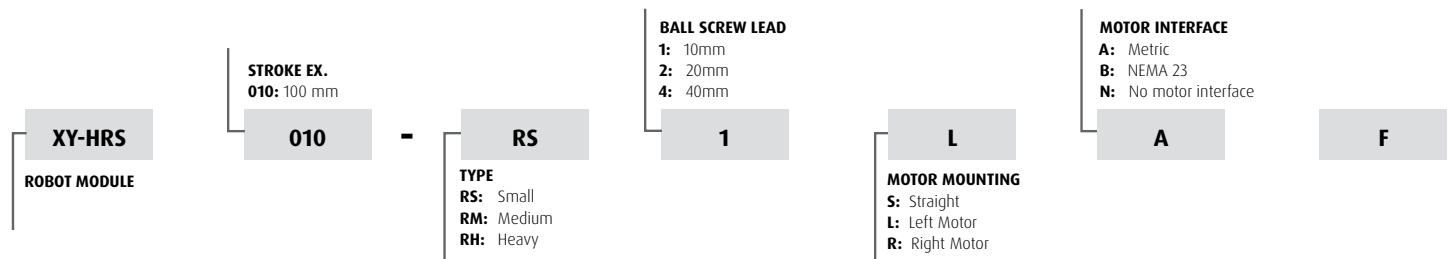


10-Parts loader/unloader for processing machinery



Reference Numbers

The reference number for the Robot Module is composed of the basic specifications of the unit.



RS Module ordering directions

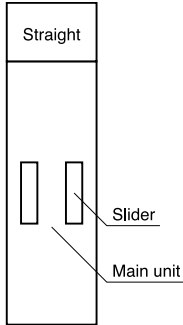
The RS Module is delivered with right or left motor mounts pre-assembled. It is not available in a straight motor mount configuration or with no motor mount attached. The RS Modules are available with metric or NEMA 23 motor mounting hole patterns.

RH and RM Module ordering directions

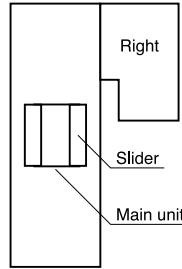
Both the modules and motor mounting kits are purchased separately. Motor mounting kits for the RM and RH modules are available with metric, NEMA 23 or NEMA 34 motor mounting hole patterns.

Motor Mounting Positions

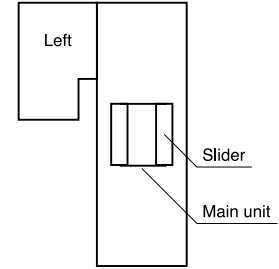
Straight Motor



Right Motor



Left Motor



List of Modules

Robot Module	Stroke (mm)														Ball Screw Lead	Payload, kg ¹		Linear Guide Moment Capacities Nm ²		
	100	200	300	400	500	750	950	1200	1400	1600	1800	2000	Horizontal	Vertical		Rolling	Pitching	Yawing		
RS Type	100	200	300	400	500									10mm	20	20	32	24	24	
RM Type		250	350	450	750	950								10mm	40	40	70	120	120	
RM Type		250	350	450	750	950								20mm	40	20	70	120	120	
RH Type			300	400	500	600	800	1000						10mm	200	40	600	450	400	
RH Type			300	400	500	600	800	1000	1200	1400	1600	1800	2000	20mm	80	20	600	450	400	
RH Type									1200	1400	1600	1800	2000	40mm	80	20	600	450	400	

Notes:

1) If your payload exceeds listed value contact NSK.

2) The individual moment capacities are defined as the value at which the fatigue life is 10,000 km when that moment acts continuously on the linear guide.

Single Axis Selection

RS Module - Left Motor Mount

Reference Number	Motor Mounting Kit	Module Mounting Plate	Limit Sensor Kit	Square Nut
XY-HRS010-RS1LAF	Pre-installed	XY-P170S-2	XY-L3544RM	XY-P170M3-1
XY-HRS020-RS1LAF				
XY-HRS030-RS1LAF				
XY-HRS040-RS1LAF				
XY-HRS050-RS1LAF				
XY-HRS010-RS1LBF				
XY-HRS020-RS1LBF				
XY-HRS030-RS1LBF				
XY-HRS040-RS1LBF				
XY-HRS050-RS1LBF				

RS Module - Right Motor Mount

Reference Number	Motor Mounting Kit	Module Mounting Plate	Limit Sensor Kit	Square Nut
XY-HRS010-RS1RAF	Pre-installed	XY-P170S-2	XY-L3544RM	XY-P170M3-1
XY-HRS020-RS1RAF				
XY-HRS030-RS1RAF				
XY-HRS040-RS1RAF				
XY-HRS050-RS1RAF				
XY-HRS010-RS1RBF				
XY-HRS020-RS1RBF				
XY-HRS030-RS1RBF				
XY-HRS040-RS1RBF				
XY-HRS050-RS1RBF				

RM Module - Straight Motor Mount

Reference Number	Motor Mounting Kit	Module Mounting Plate	Limit Sensor Kit	Square Nut
XY-HRS025-RM1SNF	XY-P5586RM (NEMA 23-1/4" shaft) or XY-P5587RM (NEMA 34-3/8" shaft) or XY-P5588RM (Metric) or XY-P5717RM (NEMA 23-3/8" shaft) or XY-P5718RM (NEMA 34-1/2" shaft)	XY-P170M-1	XY-L3543RM	XY-P170M3-1
XY-HRS025-RM2SNF				
XY-HRS035-RM1SNF				
XY-HRS035-RM2SNF				
XY-HRS045-RM1SNF				
XY-HRS045-RM2SNF				
XY-HRS055-RM1SNF				
XY-HRS055-RM2SNF				
XY-HRS075-RM1SNF				
XY-HRS075-RM2SNF				
XY-HRS095-RM1SNF				
XY-HRS095-RM2SNF				

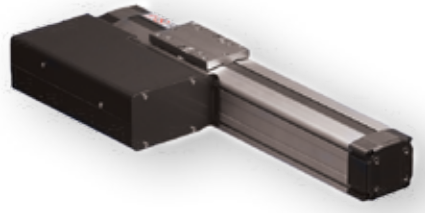
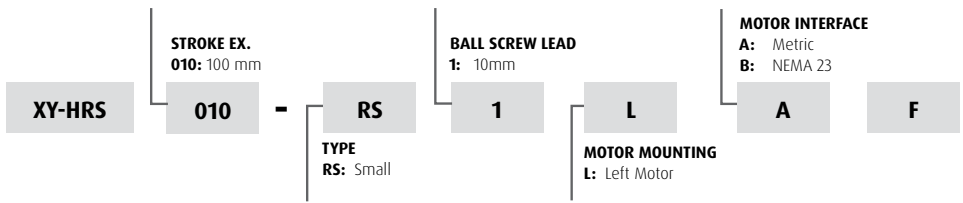
RH Module - Straight Motor Mount, Stroke ≤ 1000mm

Reference Number	Motor Mounting Kit	Module Mounting Plate	Limit Sensor Kit	Square Nut
XY-HRS030-RH1SNF	XY-P5586RM (NEMA 23-1/4" shaft) or XY-P5587RM (NEMA 34-3/8" shaft) or XY-P5588RM (Metric) or XY-P5717RM (NEMA 23-3/8" shaft) or XY-P5718RM (NEMA 34-1/2" shaft)	XY-P170H-1	XY-L3542RM	XY-P170M3-1
XY-HRS030-RH2SNF				
XY-HRS040-RH1SNF				
XY-HRS040-RH2SNF				
XY-HRS050-RH1SNF				
XY-HRS050-RH2SNF				
XY-HRS060-RH1SNF				
XY-HRS060-RH2SNF				
XY-HRS080-RH1SNF				
XY-HRS080-RH2SNF				
XY-HRS100-RH1SNF				
XY-HRS100-RH2SNF				

RH Module - Left and Right Motor Mount, Stroke > 1200mm

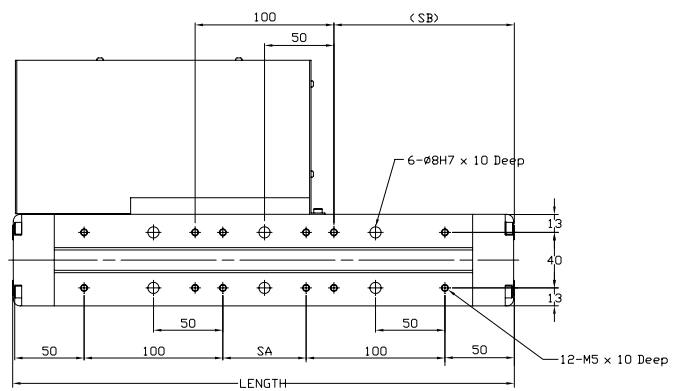
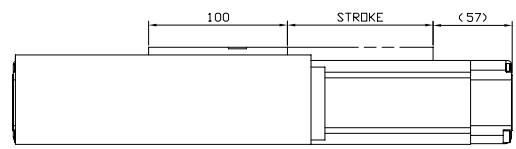
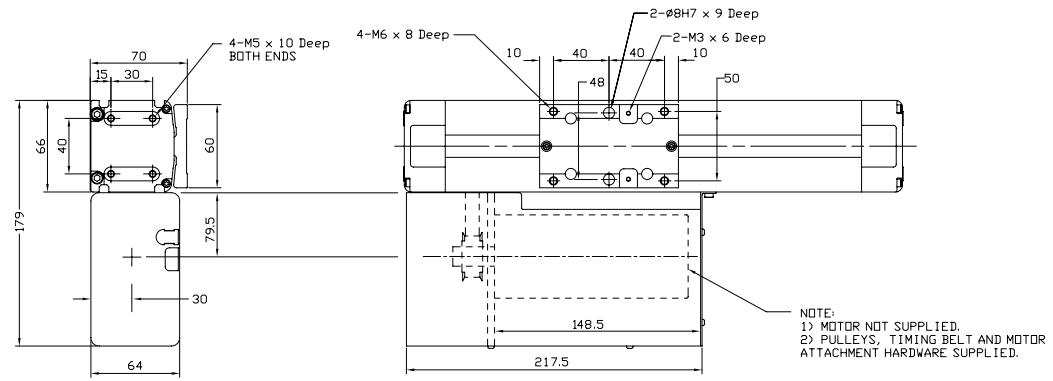
Reference Number	Motor Mounting Kit	Module Mounting Plate	Limit Sensor Kit	Square Nut
XY-HRS120-RH2SNF	XY-P5743RM NEMA 23, 1:1 or	XY-P170H-1	XY-L3542RM	XY-P170M3-1
XY-HRS120-RH4SNF				
XY-HRS140-RH2SNF	XY-P5744RM NEMA 23, 2:1 or			
XY-HRS140-RH4SNF				
XY-HRS160-RH2SNF	XY-P5745RM NEMA 34, 1:1 or			
XY-HRS160-RH4SNF				
XY-HRS180-RH2SNF	XY-P5746RM NEMA 34, 2:1 or			
XY-HRS180-RH4SNF				
XY-HRS200-RH2SNF	XY-P5747RM Metric, 1:1 or			
XY-HRS200-RH4SNF		XY-P5748RM Metric, 2:1		

RS Module - Left Motor Mount



Note: Reference number designates modules with motor mounting kit.

Reference Number	Nominal Stroke, mm	Stroke Limit +/- 2mm	Ball screw Lead, mm	L mm	SA mm	SB mm	Speed Max mm/s	Inertia kg-m ²	Breakaway Torque, N-m	Mass kg	Payload, kg ¹		Backlash, mm
											Horiz	Vert	
XY-HRS010-RS1L*F	100	110		360	60	130	972	1.58E-05		4.9	20	20	
XY-HRS020-RS1L*F	200	210		460	160	180	972	1.74E-05		5.5	20	20	
XY-HRS030-RS1L*F	300	310	10	560	260	230	972	1.90E-05	0.07	6.2	20	20	0.02
XY-HRS040-RS1L*F	400	410		660	360	280	972	2.06E-05		6.8	20	20	
XY-HRS050-RS1L*F	500	510		760	460	330	725	2.22E-05		7.5	20	20	



Options

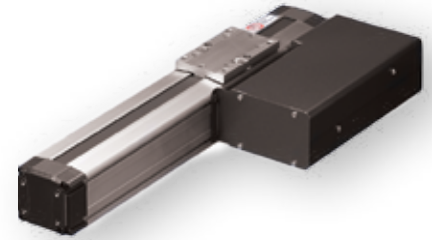
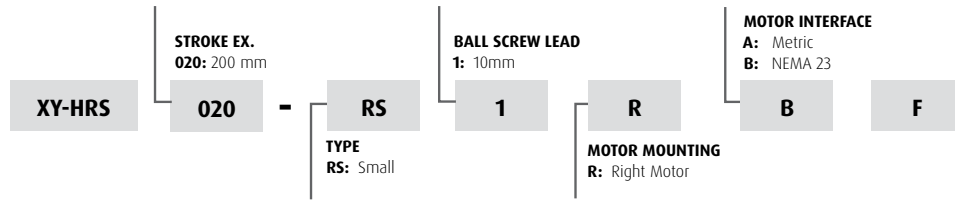
		Ref	Page
Limit Sensor Kit	XY-L3544RM	42	
Module Mounting Plate	XY-P170S-2	41	
Square Nut	XY-P170M3-1	43	

Linear Guide Moment Capacities²

Rolling Moment	[Nm]	33
Pitching Moment	[Nm]	25
Yawing Moment	[Nm]	25

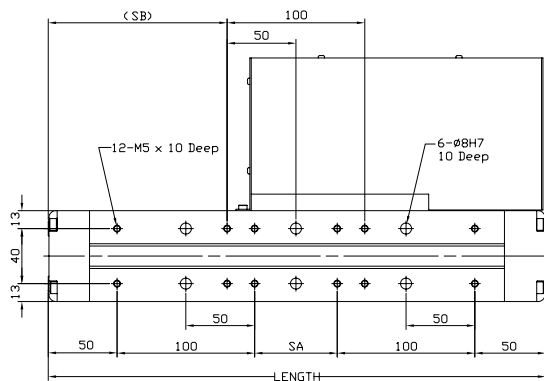
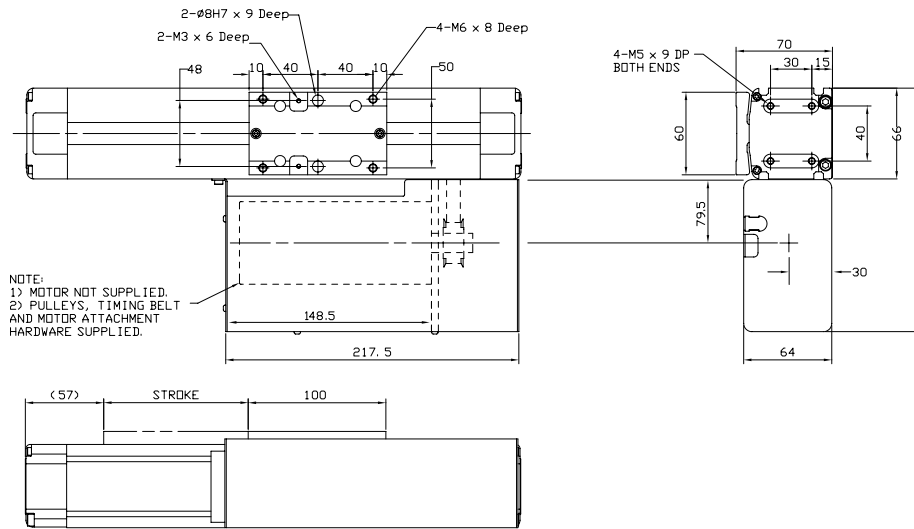
Note: Maximum input torque is 1.9 N-m
 1) If your payload exceeds listed value contact NSK.
 2) The individual moment capacities are defined as the value at which the fatigue life is 10,000 km when that moment acts continuously on the linear guide.

RS Module - Right Motor Mount



Note: Reference number designates modules with motor mounting kit.

Reference Number	Nominal Stroke, mm	Stroke Limit +/- 2mm	Ball screw Lead, mm	L mm	SA mm	SB mm	Speed Max mm/s	Inertia kg-m ²	Breakaway Torque, N-m	Mass kg	Payload, kg ¹		Backlash, mm
											Horiz	Vert	
XY-HRS010-RS1R*F	100	110		360	60	130	972	1.58E-05		4.9	20	20	
XY-HRS020-RS1R*F	200	210		460	160	180	972	1.74E-05		5.5	20	20	
XY-HRS030-RS1R*F	300	310	10	560	260	230	972	1.90E-05	0.07	6.2	20	20	0.02
XY-HRS040-RS1R*F	400	410		660	360	280	972	2.06E-05		6.8	20	20	
XY-HRS050-RS1R*F	500	510		760	460	330	725	2.22E-05		7.5	20	20	



Note: Maximum input torque is 1.9 N-m
 1) If your payload exceeds listed value contact NSK.
 2) The individual moment capacities are defined as the value at which the fatigue life is 10,000 km when that moment acts continuously on the linear guide.

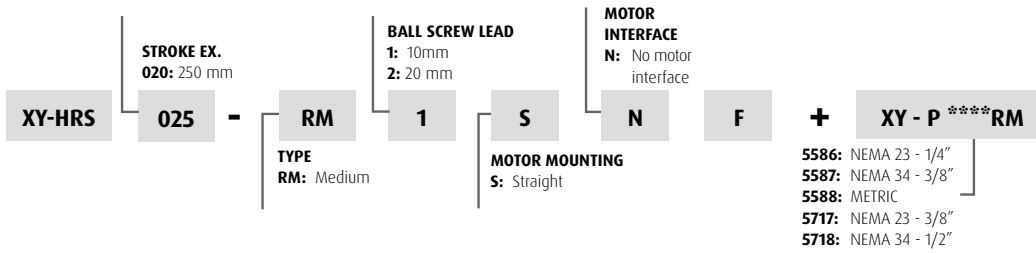
Options

		Ref Page
Limit Sensor Kit	XY-L3544RM	42
Module Mounting Plate	XY-P170S-2	41
Square Nut	XY-P170M3-1	43

Linear Guide Moment Capacities²

Rolling Moment	[Nm]	33
Pitching Moment	[Nm]	25
Yawing Moment	[Nm]	25

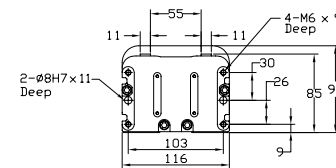
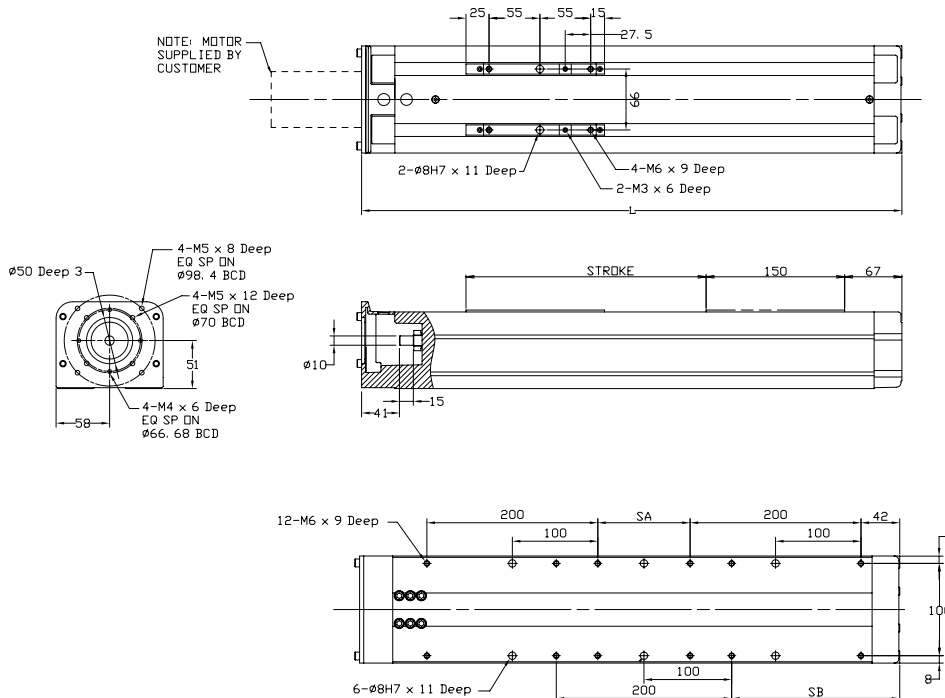
RM Module – Straight Motor Mount + Motor Mounting Kit



Reference Number	Nominal Stroke, mm	Stroke Limit +/- 2mm	Ball screw Lead, mm	L mm	SA mm	SB mm	Speed Max mm/s	Inertia kg-m ²	Breakaway Torque, N-m	Mass kg	Payload, kg ¹		Backlash, mm
											Horiz	Vert	
XY-HRS025-RM1SNF	250	260	10	586	70	177	778	3.50E-05	0.26	9.5	40	40	0.005
XY-HRS025-RM2SNF			20								20		
XY-HRS035-RM1SNF	350	360	10	686	170	227	778	3.89E-05	0.26	10.5	40	40	
XY-HRS035-RM2SNF			20								20		
XY-HRS045-RM1SNF	450	460	10	786	270	277	778	4.28E-05	0.26	11.5	40	40	
XY-HRS045-RM2SNF			20								20		
XY-HRS055-RM1SNF	550	560	10	886	370	327	778	4.67E-05	0.26	12.5	40	40	
XY-HRS055-RM2SNF			20								20		
XY-HRS075-RM1SNF	750	760	10	1086	570	427	650	5.45E-05	0.26	15.5	40	40	
XY-HRS075-RM2SNF			20								20		
XY-HRS095-RM1SNF	950	960	10	1286	770	527	583	1.72E-04	0.26	17.5	40	40	
XY-HRS095-RM2SNF			20								20		

Motor Mounting Kits

		Ref Page
NEMA 23 - 1/4" shaft	XY-P5586RM	18
NEMA 23 - 3/8" shaft	XY-P5717RM	18
NEMA 34 - 3/8" shaft	XY-P5587RM	18
NEMA 34 - 1/2" shaft	XY-P5718RM	19
60mm Frame Metric Motor Kit	XY-P5588RM	19



Options

		Ref Page
Limit Sensor Kit	XY-L3543RM	42
Module Mounting Plate	XY-P170M-1	41
Square Nut	XY-P170M3-1	43

Linear Guide Moment Capacities²

Rolling Moment	[Nm]	70
Pitching Moment	[Nm]	120
Yawing Moment	[Nm]	120

Note: Maximum input torque is 3.8 N-m

1) If your payload exceeds listed value contact NSK.

2) The individual moment capacities are defined as the value at which the fatigue life is 10,000 km when that moment acts continuously on the linear guide.

RH Module – Straight Motor Mount + Motor Mounting Kit

XY-HRS - **030** - **RH** - **1** - **S** - **N** - **F** + **XY - P ****RM**

STROKE EX.
030: 300 mm

BALL SCREW LEAD
1: 10mm
2: 20 mm

MOTOR INTERFACE
N: No motor interface

TYPE
RH: Heavy

MOTOR MOUNTING
S: Straight

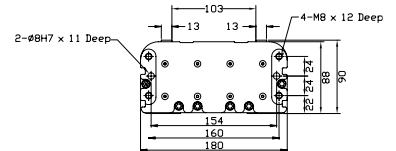
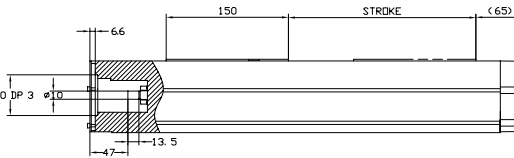
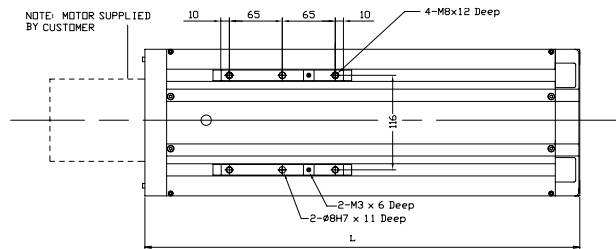
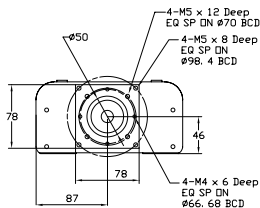
5586: NEMA 23 - 1/4"
5587: NEMA 34 - 3/8"
5588: METRIC
5717: NEMA 23 - 3/8"
5718: NEMA 34 - 1/2"



Reference Number	Nominal Stroke, mm	Stroke Limit +/- 2mm	Ball screw Lead, mm	L mm	SA mm	SB mm	Speed Max mm/s	Inertia kg-m ²	Breakaway Torque, N-m	Mass kg	Payload, kg ¹		Backlash, mm
											Horiz	Vert	
XY-HRS030-RH1SNF	300	310	10	612	100	190	778	4.12E-05	0.7	18	200	40	0.005
XY-HRS030-RH2SNF											80	20	
XY-HRS040-RH1SNF	400	410	10	712	200	240	778	4.51E-05	0.7	20	200	40	
XY-HRS040-RH2SNF											80	20	
XY-HRS050-RH1SNF	500	510	10	812	300	290	778	4.90E-05	0.7	22	200	40	
XY-HRS050-RH2SNF											80	20	
XY-HRS060-RH1SNF	600	610	10	912	400	340	778	5.29E-05	0.7	24	200	40	
XY-HRS060-RH2SNF											80	20	
XY-HRS080-RH1SNF	800	810	10	1112	600	440	671	6.07E-05	0.7	28	200	40	
XY-HRS080-RH2SNF											80	20	
XY-HRS100-RH1SNF	1000	1010	10	1312	800	540	583	1.72E-04	0.7	33	200	40	
XY-HRS100-RH2SNF											80	20	

Motor Mounting Kits

	Ref	Page
NEMA 23 - 1/4" shaft	XY-P5586RM	18
NEMA 23 - 3/8" shaft	XY-P5717RM	18
NEMA 34 - 3/8" shaft	XY-P5587RM	18
NEMA 34 - 1/2" shaft	XY-P5718RM	19
60mm Frame Metric Motor Kit	XY-P5588RM	19

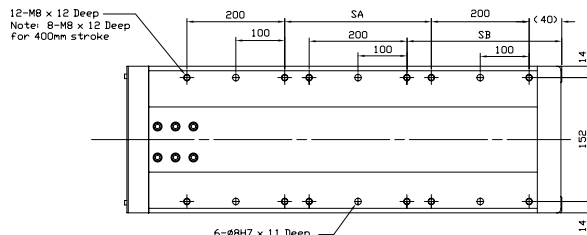


Options

	Ref	Page
Limit Sensor Kit	XY-L3542RM	42
Module Mounting Plate	XY-P170H-1	41
Square Nut	XY-P170M3-1	43

Linear Guide Moment Capacities²

Rolling Moment	[Nm]	600
Pitching Moment	[Nm]	450
Yawing Moment	[Nm]	400



Note: Maximum input torque is 3.8 N-m

1) If your payload exceeds listed value contact NSK.

2) The individual moment capacities are defined as the value at which the fatigue life is 10,000 km when that moment acts continuously on the linear guide.

RH Module – Extended Stroke + Motor Mounting Kit

XY-HRS - **120** - **RH** - **2** - **S** - **N** - **F** + **XY - P ****RM**

STROKE EX.
120: 1200 mm

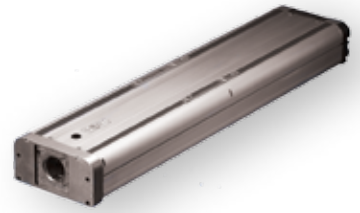
BALL SCREW LEAD
2: 20mm
4: 40 mm

MOTOR INTERFACE
N: No motor interface

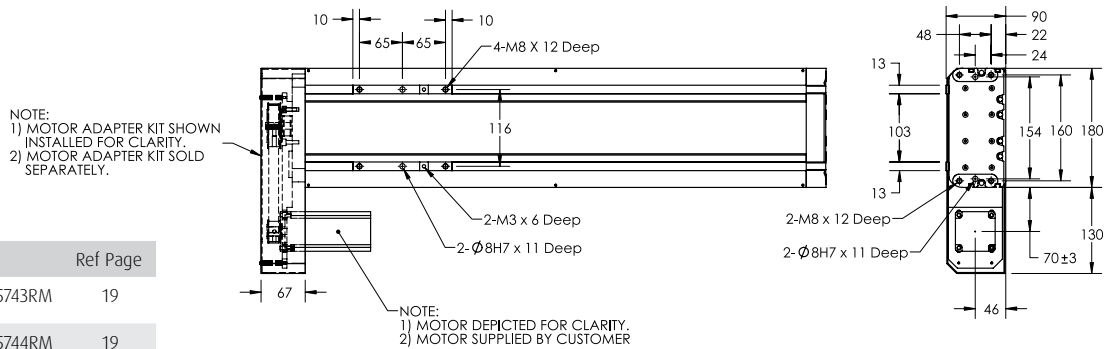
TYPE
RH: Heavy

MOTOR MOUNTING
S: Straight

5743: NEMA 23, 1:1 pulley ratio
5744: NEMA 23, 2:1 pulley reduction
5745: NEMA 34, 1:1 pulley ratio
5746: NEMA 34, 2:1 pulley reduction
5747: METRIC, 1:1 pulley ratio
5748: METRIC, 2:1 pulley reduction



Reference Number	Nominal Stroke, mm	Stroke Limit +/- 2mm	Ballscrew Lead, mm	L mm	SA mm	SB mm	Speed Max mm/s	Inertia kg-m ²	Breakaway Torque, N-m	Mass kg	Payload, kg ¹		Backlash, mm
											Horiz	Vert	
XY-HRS120-RH2SNF	1200	1210	20	1548	1000	640	837	1.46E-04	1.3	41	200	40	0.005
XY-HRS120-RH4SNF			40								80	20	
XY-HRS140-RH2SNF	1400	1410	20	1748	1200	740	617	1.70E-04	1.3	45	200	40	
XY-HRS140-RH4SNF			40								80	20	
XY-HRS160-RH2SNF	1600	1610	20	1948	1400	840	474	1.95E-04	1.3	50	200	40	
XY-HRS160-RH4SNF			40								80	20	
XY-HRS180-RH2SNF	1800	1810	20	2148	1600	940	376	2.20E-04	1.3	54	200	40	
XY-HRS180-RH4SNF			40								80	20	
XY-HRS200-RH2SNF	2000	2010	20	2348	1800	1040	305	2.44E-04	1.3	58	200	40	
XY-HRS200-RH4SNF			40								80	20	



Motor Mounting Kits

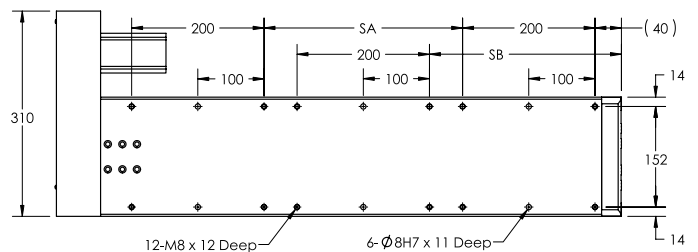
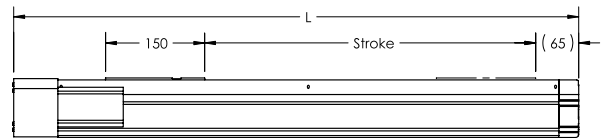
	Ref	Page
NEMA 23 - 1:1 pulley ratio	XY-P5743RM	19
NEMA 23 - 2:1 pulley reduction	XY-P5744RM	19
NEMA 34 - 1:1 pulley ratio	XY-P5745RM	19
NEMA 34 - 1:1 pulley reduction	XY-P5746RM	19
Metric, 1:1 pulley ratio	XY-P5747RM	19
Metric, 2:1 pulley reduction	XY-P5748RM	19

Options

	Ref	Page
Limit Sensor Kit	XY-L3542RM	42
Module Mounting Plate	XY-P170H-1	41
Square Nut	XY-P170M3-1	43

Linear Guide Moment Capacities²

Rolling Moment	[Nm]	600
Pitching Moment	[Nm]	450
Yawing Moment	[Nm]	400



1) If your payload exceeds listed value contact NSK.
2) The individual moment capacities are defined as the value at which the fatigue life is 10,000 km when that moment acts continuously on the linear guide.

Motor Mounting Kits

Motor Mounting Kits provide the hardware necessary to connect NEMA 23, NEMA 34 or 60mm Frame Metric motors to the base module. These kits allow the user the flexibility to attach motors of their choice to the base module.

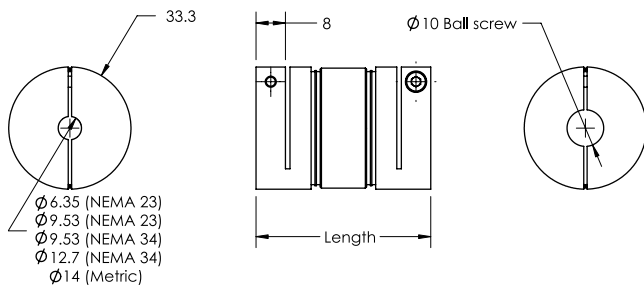
See opposite page for definition of the various motor interfaces.

There are two kits for the RS module, five kits for RH/RM $\leq 1000\text{mm}$ and six kits for the RH extended module $> 1200\text{mm}$.

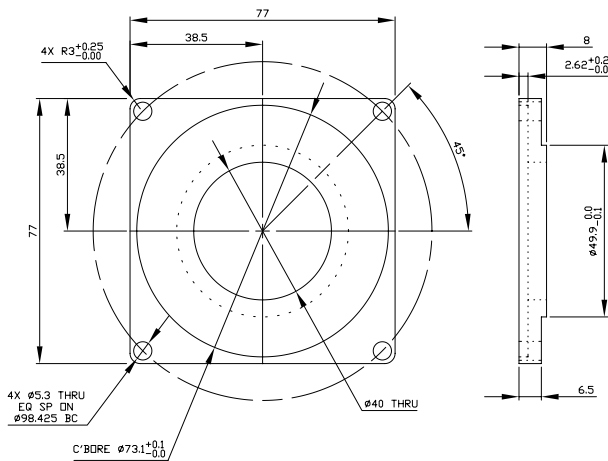
The motor mounting kit for the RS module comes installed and ready to accept the user's motor.



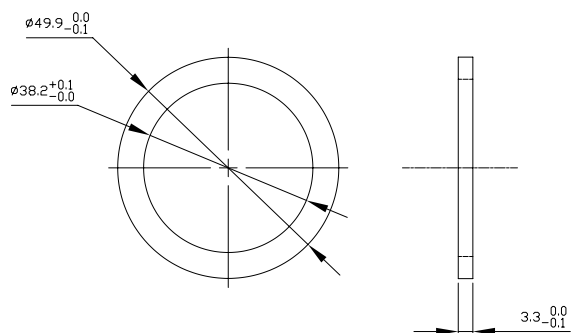
Shaft Coupling



NEMA 34 Motor Adapter Plate RH/RM $\leq 1000\text{mm}$



NEMA 23 Motor Adapter Ring RH/RM $\leq 1000\text{mm}$



RS Module

PN XY-P5584RM, 60mm Frame Metric Motor Kit

- 60mm Frame Metric Motor Plate
- 60mm Frame Metric Motor Mounting Nut Plate
- Motor Shaft Pulley, $\varnothing 14\text{mm}$ ID
- Timing Belt
- Qty 4, M5 x 14 Socket Head Cap Screw

PN XY-P5585RM, NEMA 23 Motor Mounting Kit

- NEMA 23 Motor Plate
- NEMA 23 Motor Mounting Nut Plate
- Motor Shaft Pulley, $\varnothing 1/4"$ ID, $\varnothing 3/8"$ ID
- Timing Belt
- Qty 4, M4 x 14 Socket Head Cap Screw

RH/RM Modules – Stroke $\leq 1000\text{mm}$

PN XY-P5586RM, NEMA 23 $\varnothing 1/4"$ Motor Mounting Kit

- NEMA 23 Motor Adapter Ring
- Jaw Type Shaft Coupling, $\varnothing 10\text{mm}$ x $\varnothing 1/4"$ x 47.6mm long
- Disk Type Shaft Coupling, $\varnothing 10\text{mm}$ x $\varnothing 1/4"$ x 44.5mm long
- Qty 4, M4 x 8 Socket Head Cap Screw

PN XY-P5717RM, NEMA 23 $\varnothing 3/8"$ Motor Mounting Kit

- NEMA 23 Motor Adapter Ring
- Jaw Type Shaft Coupling, $\varnothing 10\text{mm}$ x $\varnothing 3/8"$ x 47.6mm long
- Disk Type Shaft Coupling, $\varnothing 10\text{mm}$ x $\varnothing 3/8"$ x 44.5mm long
- Qty 4, M4 x 8 Socket Head Cap Screw

PN XY-P5587RM, NEMA 34 $\varnothing 3/8"$ Motor Mounting Kit

- NEMA 34 Motor Adapter Plate
- Jaw Type Shaft Coupling, $\varnothing 10\text{mm}$ x $\varnothing 3/8"$ x 47.6mm long
- Disk Type Shaft Coupling, $\varnothing 10\text{mm}$ x $\varnothing 3/8"$ x 44.5mm long
- Qty 4, M5 x 16 Socket Head Cap Screw

PN XY-P5718RM, NEMA 34 ϕ 1/2" Motor Mounting Kit

- NEMA 34 Motor Adapter Plate
- Jaw Type Shaft Coupling, ϕ 10mm x ϕ 1/2" x 47.6mm long
- Disk Type Shaft Coupling, ϕ 10mm x ϕ 1/2" x 44.5mm long
- Qty 4, M5 x 16 Socket Head Cap Screw

PN XY-P5588RM, 60mm Frame Metric Motor Kit

- Jaw Type Shaft Coupling, ϕ 10mm x ϕ 14mm x 47.6mm long
- Disk Type Shaft Coupling, ϕ 10mm x ϕ 14mm x 44.5mm long
- Qty 4, M5 x 16 Socket Head Cap Screw

RH Module Strokes > 1200mm

PN XY-P5743RM, NEMA 23, 1:1 Pulley Ratio, Motor Mounting Kit

- NEMA 23 Motor Mounting Plate
- NEMA 23 Motor Mounting Nut Plate
- Belt Cover
- Qty 4, M3 Hex Standoff
- Motor Pulley, 1/4" ID, 31.83 PD
- Motor Pulley, 3/8" ID, 31.83 PD
- Ballscrew Pulley, 10mm ID, 31.83 PD
- Timing Belt
- Assorted Fasteners

PN XY-P5745RM NEMA 34, 1:1 Pulley Ratio, Motor Mounting Kit

- NEMA 34 Motor Mounting Plate
- NEMA 34 Motor Mounting Nut Plate
- Belt Cover
- Qty 4, M3 Hex Standoff
- Motor Pulley, 3/8" ID, 31.83 PD
- Motor Pulley, 1/2" ID, 31.83 PD
- Ballscrew Pulley, 10mm ID, 31.83 PD
- Timing Belt
- Assorted Fasteners

PN XY-P5747RM, Metric 60mm, 1:1 Pulley Ratio, Motor Mounting Kit

- Metric Motor Mounting Plate
- Nut Plate, Metric Motor
- Belt Cover
- Qty 4, M3 Hex Standoff
- Motor Pulley, 14mm ID, 31.83 PD
- Ballscrew Pulley, 10mm ID, 31.83 PD
- Timing Belt
- Assorted Fasteners

Shaft Couplings Features:

Jaw Type - three piece coupling consisting of two hubs and a spider. The spider is made from polyurethane thereby providing damping and protection against impulse loads. The spider is pressed into the hubs providing zero backlash operation.

Disk Type - five piece coupling consisting of two hubs, a center member and thin metallic disks that transmit torque. Disk type couplings provide higher torsional rigidity with lower inertia than other coupling types.

PN XY-P5744RM, NEMA 23, 2:1 Pulley Reduction, Motor Mounting Kit

- NEMA 23 Motor Mounting Plate
- NEMA 23 Motor Mounting Nut Plate
- Belt Cover
- Qty 4, M3 Hex Standoff
- Motor Pulley, 1/4" ID, 31.83 PD
- Motor Pulley, 3/8" ID, 31.83 PD
- Ballscrew Pulley, 10mm ID, 63.66 PD
- Timing Belt
- Assorted Fasteners

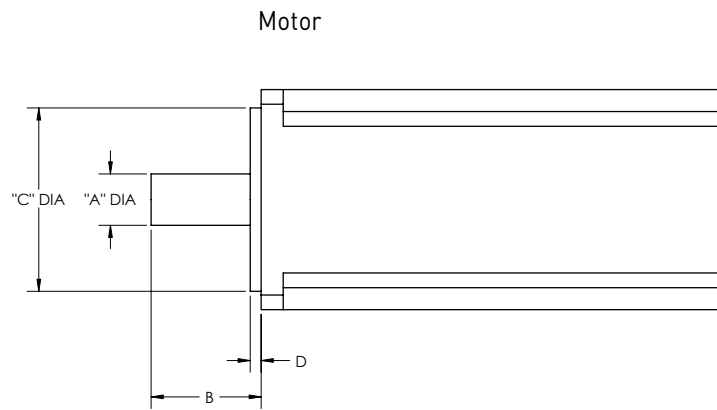
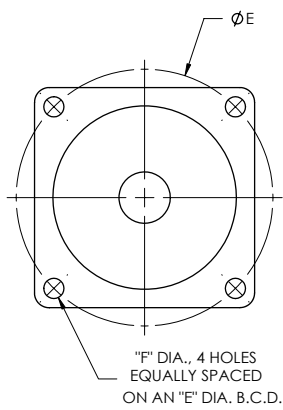
PN XY-P5746RM, NEMA 34, 2:1 Pulley Reduction, Motor Mounting Kit

- NEMA 34 Motor Mounting Plate
- NEMA 34 Motor Mounting Nut Plate
- Belt Cover
- Qty 4, M3 Hex Standoff
- Motor Pulley, 3/8" ID, 31.83 PD
- Motor Pulley, 1/2" ID, 31.83 PD
- Ballscrew Pulley, 10mm ID, 63.66 PD
- Timing Belt
- Assorted Fasteners

PN XY-P5748RM, Metric 60mm, 2:1 Pulley Reduction, Motor Mounting Kit

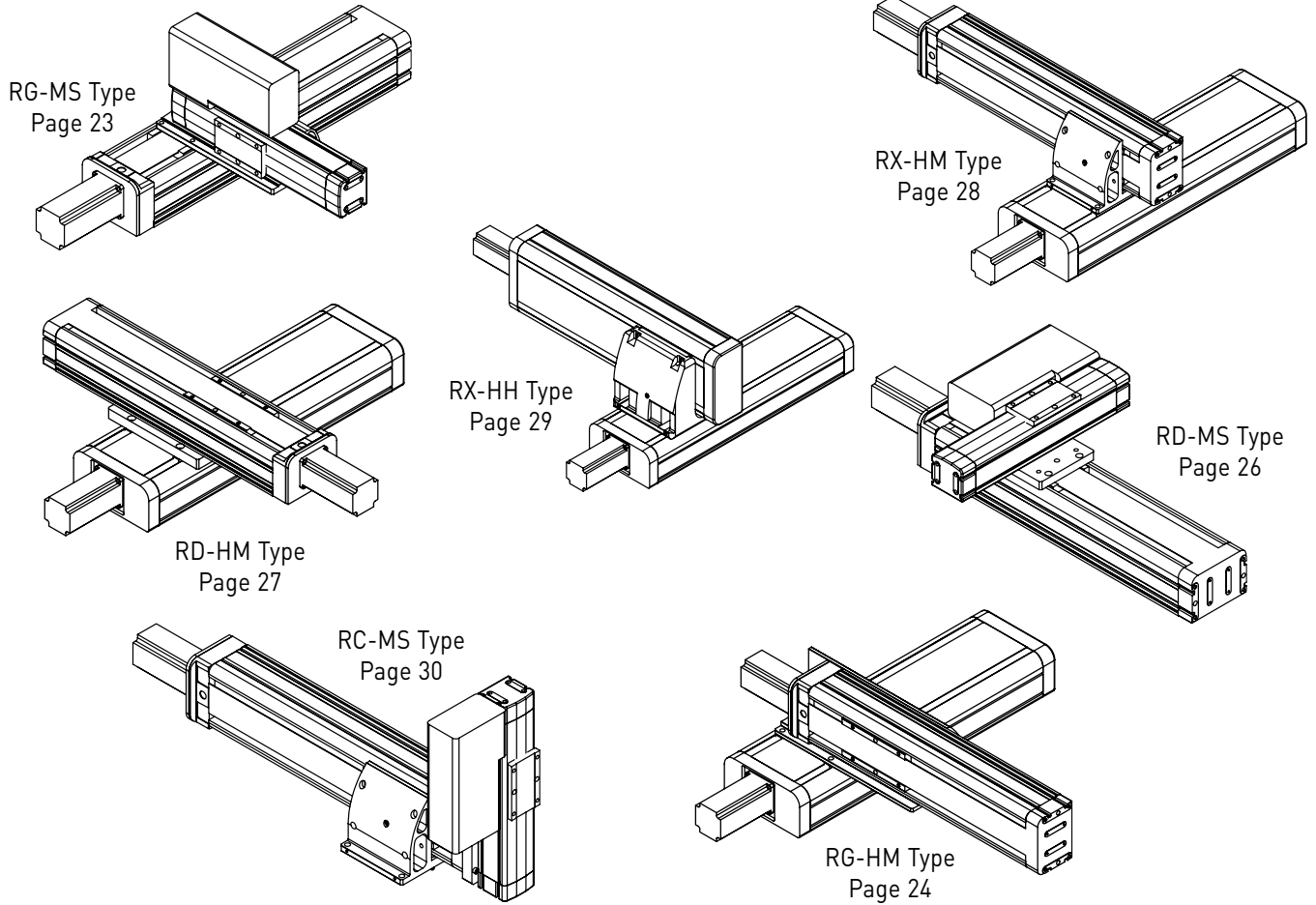
- Metric Motor Mounting Plate
- Metric Motor Mounting Nut Plate
- Belt Cover
- Qty 4, M3 Hex Standoff
- Motor Pulley, 14mm ID, 31.83 PD
- Ballscrew Pulley, 10mm ID, 63.66 PD
- Timing Belt
- Assorted Fasteners

Motor Interface Dimensions



Item	Dimension	Motor Interface		
		Metric 60mm	NEMA 23	NEMA 34
A	Motor Shaft Diameter	14	6.35 or 9.53	9.53 or 12.70
B	Motor Shaft Length	30	20.57	31.75
C	Pilot Diameter	50	38.10	73.03
D	Pilot Length	3	2.36	2.36
E	Mounting Bolt Circle Diameter	70	66.68	98.43
F	Bolt Hole Size	5.5	4.95	5.54

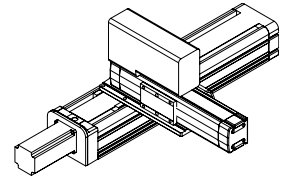
2 Axis Combinations



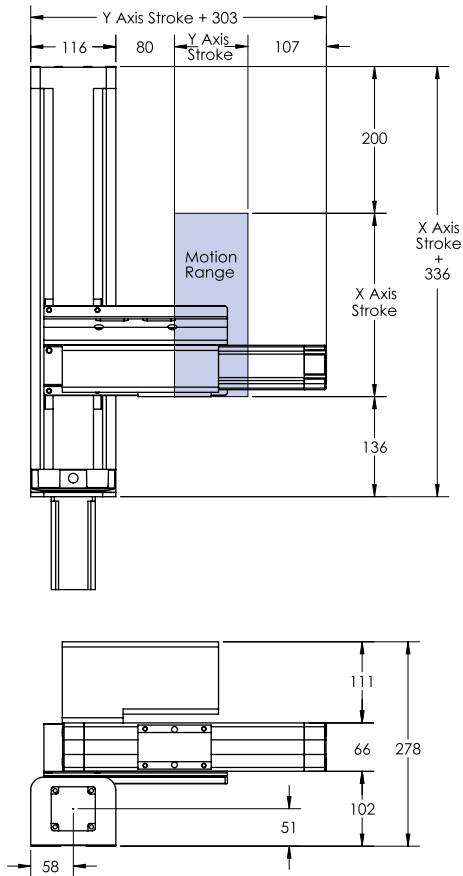
2-Axis Selection

Combination	Type	X Axis	Y Axis	Combining Bracket	Module Mounting Plate	Limit Sensor Kit	Square Nut
RG-MS	Type A or B	XY-HRS0*5-RM*SNF & XY-P****RM	XY-HRS0*0-RS1R*F	XY-P175GMS-1	XY-P170M-1	X Axis: XY-L3543RM Y Axis: XY-L3544RM	
RG-HM	Type A or C Type B or D	XY-HRS0**0-RH*SNF & XY-P****RM	XY-HRS0*5-RM*SNF & XY-P****RM	XY-P175GHM-1 XY-P175GHM-2	XY-P170H-1	X Axis: XY-L3542RM Y Axis: XY-L3543RM	
RD-MS	Type A Type B	XY-HRS0*5-RM*SNF & XY-P****RM	XY-HRS0*0-RS1L*F XY-HRS0*0-RS1R*F	XY-P175DMS-1	XY-P170M-1	X Axis: XY-L3543RM Y Axis: XY-L3544RM	
RD-HM	Type A or B	XY-HRS0**0-RH*SNF & XY-P****RM	XY-HRS0*5-RM*SNF & XY-P****RM	XY-P175DHM-1	XY-P170H-1	X Axis: XY-L3542RM Y Axis: XY-L3543RM	XY-P170M3-1
RX-HM	Type A or B	XY-HRS0**0-RH*SNF & XY-P****RM	XY-HRS0*5-RM*SNF & XY-P****RM	XY-P175XHM-1	XY-P170H-1	X Axis: XY-L3542RM Y Axis: XY-L3543RM	
RX-HH	Type A or B	XY-HRS0**0-RH*SNF & XY-P****RM	XY-HRS0**0-RH*SNF & XY-P****RM	XY-P175XHH-1	XY-P170H-1	XY-L3542RM	
RC-MS	Type A Type B	XY-HRS0*5-RM*SNF & XY-P****RM	XY-HRS0*0-RS1L*F XY-HRS0*0-RS1R*F	XY-P175CMS-1 & XY-P175XHM-1	NA	X Axis: XY-L3543RM Y Axis: XY-L3544RM	

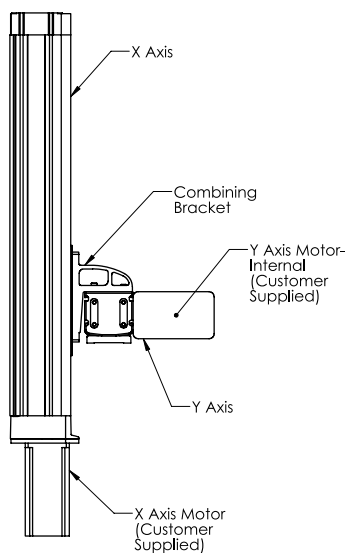
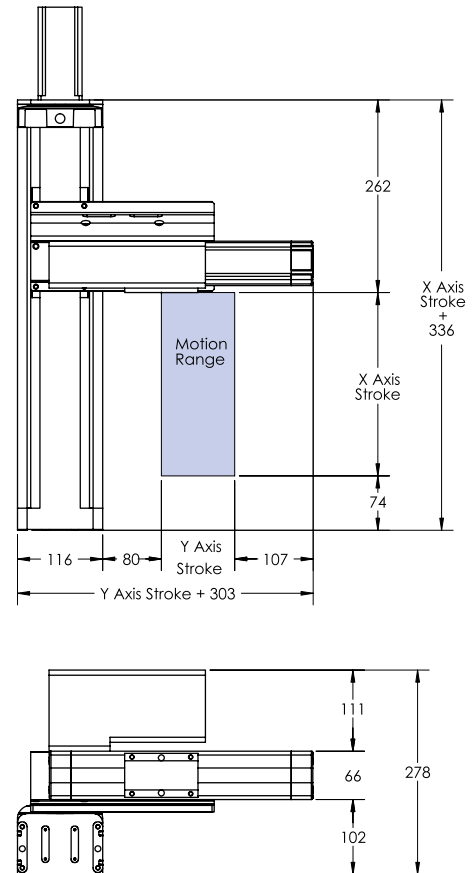
Combination Type: RG-MS



Type A



Type B



Note: Assembly of system required

Combination Type and Reference Numbers

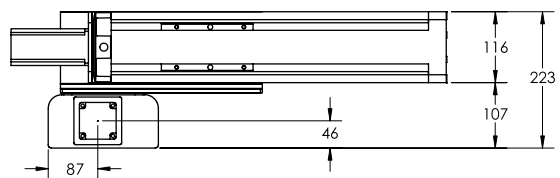
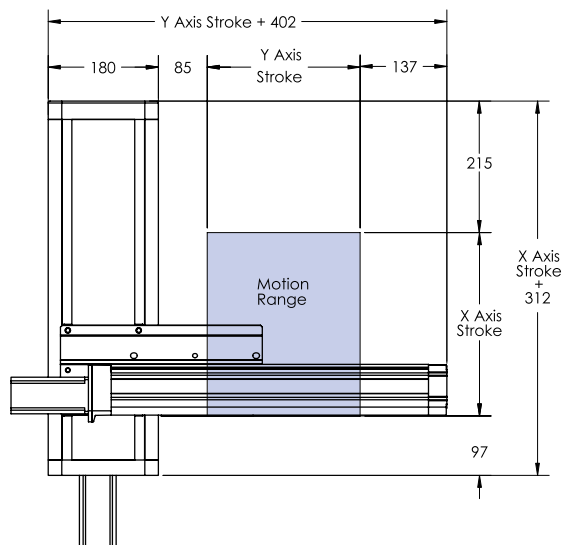
Combination Type	Type A or B	Ref Page
X Axis	XY-HRS0*5-RM*SNF	15
X Axis Motor Mounting Kit	XY-P****RM	18 & 19
Y Axis	XY-HRS0*0-RS1R*F	13
XY Combining Bracket	XY-P175GMS-1	39
Options:		
Limit Sensor Kit, X Axis	XY-L3543RM	42
Limit Sensor Kit, Y Axis	XY-L3544RM	42
X Axis Module Mounting Plate	XY-P170M-1	41
Square Nut	XY-P170M3-1	43

Transportable Mass Table [kg]

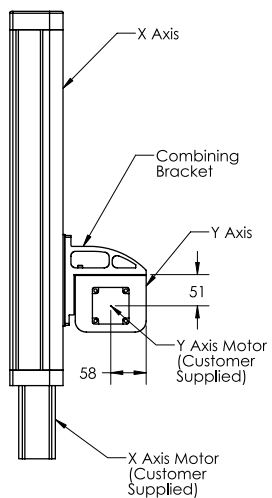
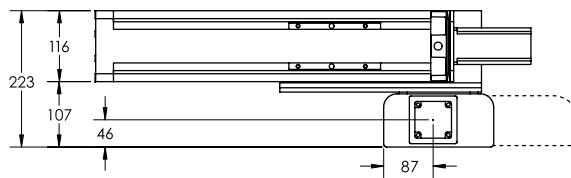
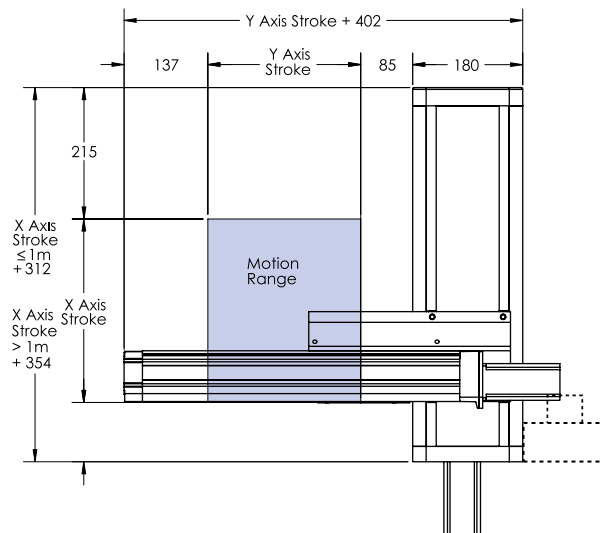
Acceleration m/s ²	Y Axis Stroke, mm				
	100	200	300	400	500
4.9	20	15	11	8	6
9.8	18	12	9	6.5	5

Combination Type: RG-HM

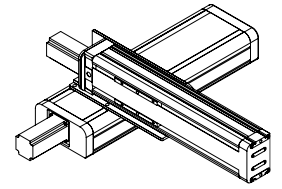
Type A



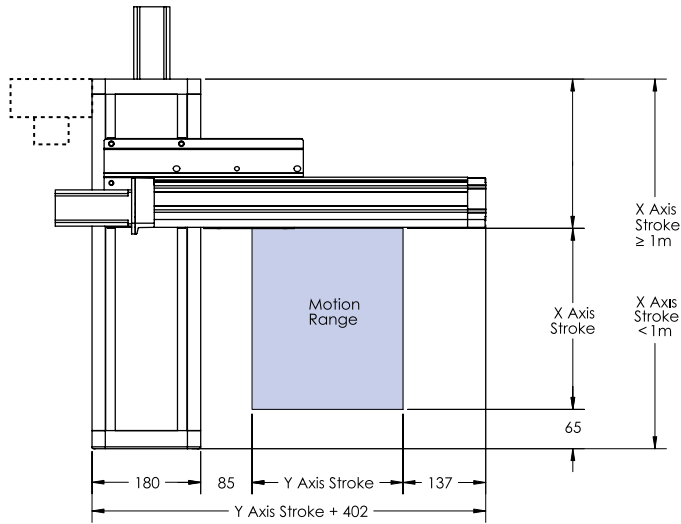
Type B



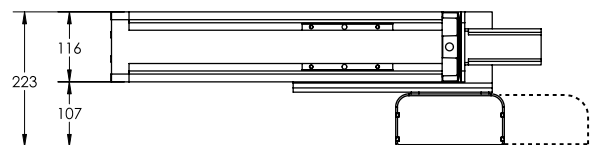
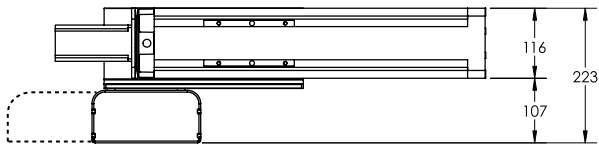
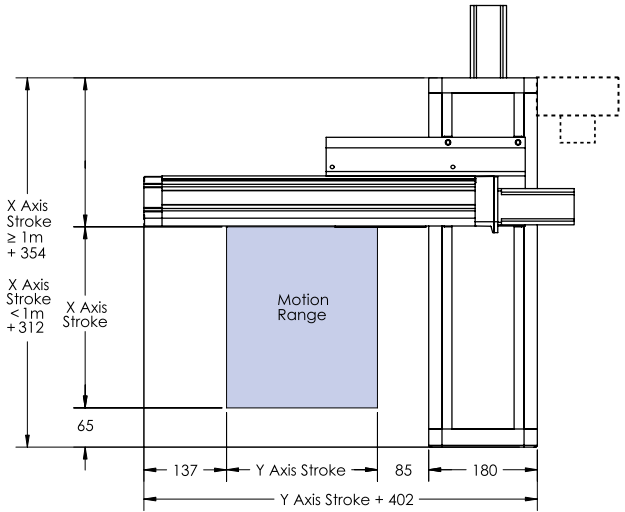
Note: Assembly of system required



Type C



Type D



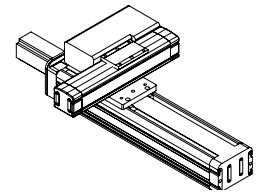
Combination Type and Reference Numbers

Combination Type	Type A or C	Type B or D	Ref Page
X Axis	XY-HRS0**0-RH*SNF		16 & 17
X Axis Motor Mounting Kit	XY-P****RM		18 & 19
Y Axis	XY-HRS0*5-RM*SNF		15
Y Axis Motor Mounting Kit	XY-P****RM		18 & 19
XY Combining Bracket	XY-P175GHM-1 XY-P175GHM-2		39
Options:			
Limit Sensor Kit, X Axis	XY-L3542RM		42
Limit Sensor Kit, Y Axis	XY-L3543RM		42
X Axis Module Mounting Plate	XY-P170H-1		41
Square Nut	XY-P170M3-1		43

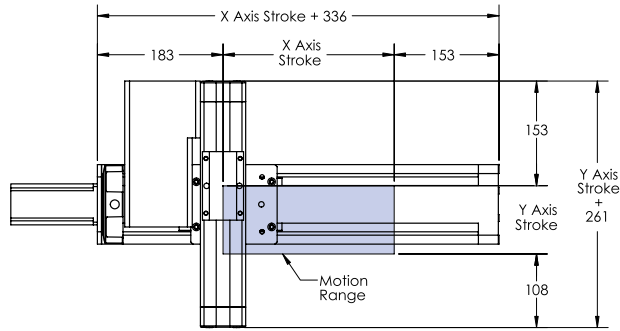
Transportable Mass Table [kg]

Acceleration m/s^2	Y Axis Stroke, mm					
	250	350	450	550	750	950
4.9	40	40	40	40	33	24
9.8	40	40	33	28	19	13

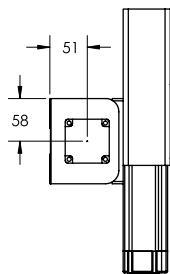
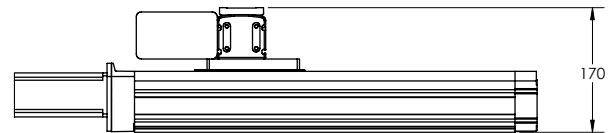
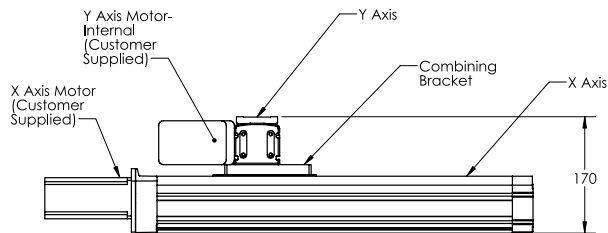
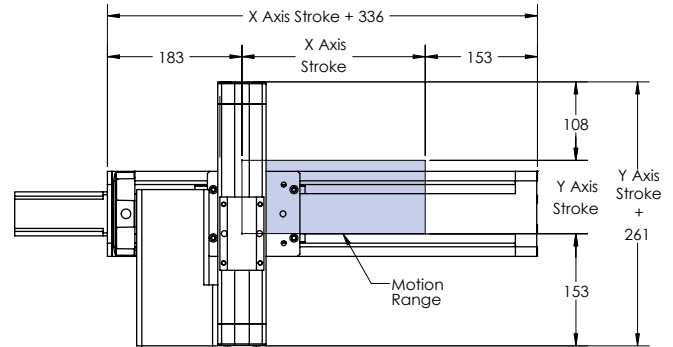
Combination Type: RD-MS



Type A



Type B



Note: Assembly of system required

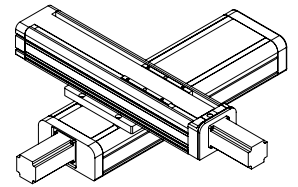
Combination Type and Reference Numbers

Combination Type	Type A	Type B	Ref Page
X Axis	XY-HRS0*5-RM*SNF		15
X Axis Motor Mounting Kit	XY-P****RM		18 & 19
Y Axis	XY-HRS0*0-R51L*F	XY-HRS0*0-R51R*F	12 & 13
XY Combining Bracket	XY-P175DMS-1		39
Options:			
Limit Sensor Kit, X Axis	XY-L3543RM		42
Limit Sensor Kit, Y Axis	XY-L3544RM		42
X Axis Module Mounting Plate	XY-P170M-1		41
Square Nut	XY-P170M3-1		43

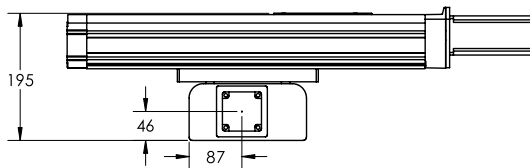
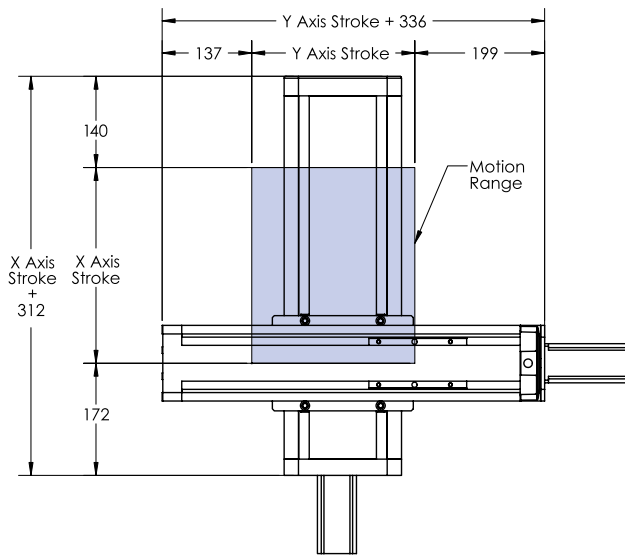
Transportable Mass Table [kg]

Acceleration m/s ²	Y Axis Stroke, mm				
	100	200	300	400	500
4.9	20	20	20	20	20
9.8	20	20	20	20	20

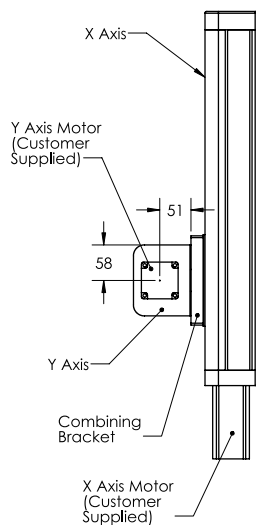
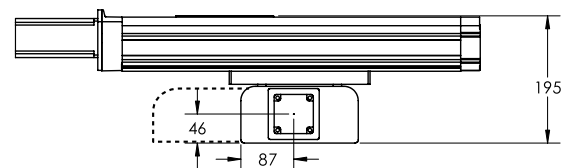
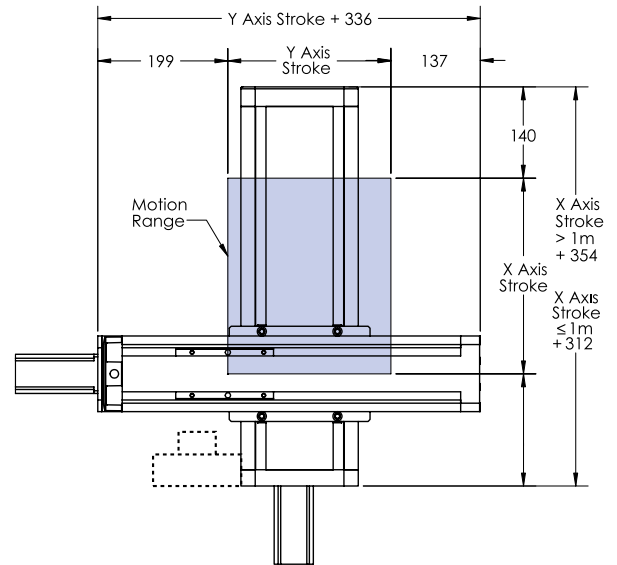
Combination Type: RD-HM



Type A



Type B



Note: Assembly of system required

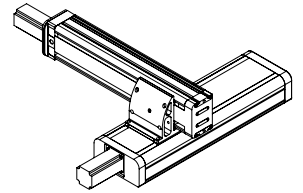
Combination Type and Reference Numbers

Combination Type	Type A or B	Ref Page
X Axis	XY-HRS0**0-RH*SNF	16 & 17
X Axis Motor Mounting Kit	XY-P****RM	18 & 19
Y Axis	XY-HRS0*5-RM*SNF	15
Y Axis Motor Mounting Kit	XY-P****RM	18 & 19
XY Combining Bracket	XY-P175DHM-1	39
Options:		
Limit Sensor Kit, X Axis	XY-L3542RM	42
Limit Sensor Kit, Y Axis	XY-L3543RM	42
X Axis Module Mounting Plate	XY-P170H-1	41
Square Nut	XY-P170M3-1	43

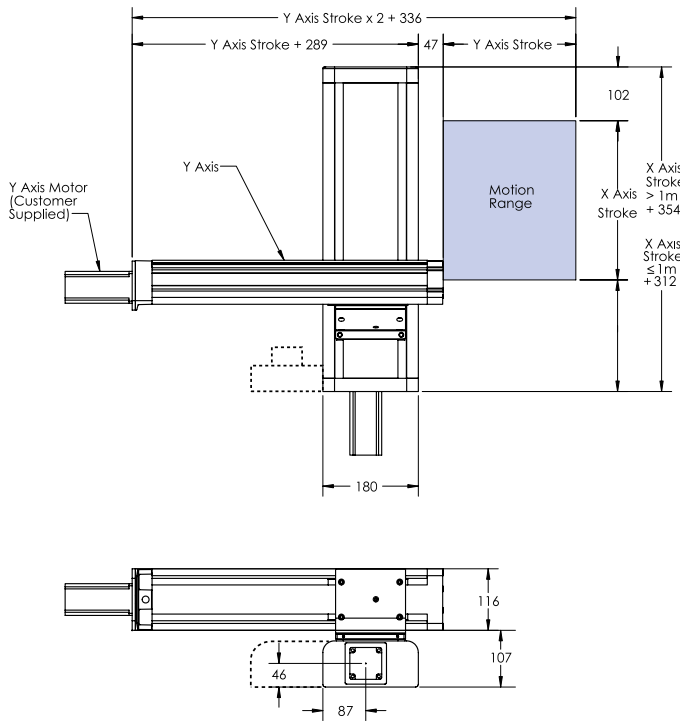
Transportable Mass Table [kg]

Acceleration m/s ²	Y Axis Stroke, mm					
	250	350	450	550	750	950
4.9	40	40	40	40	40	40
9.8	40	40	40	40	40	40

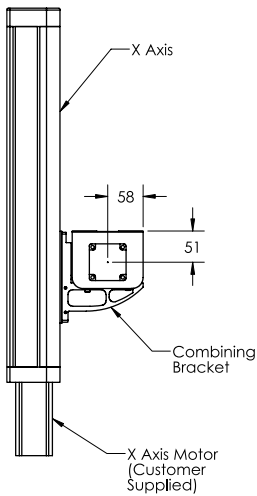
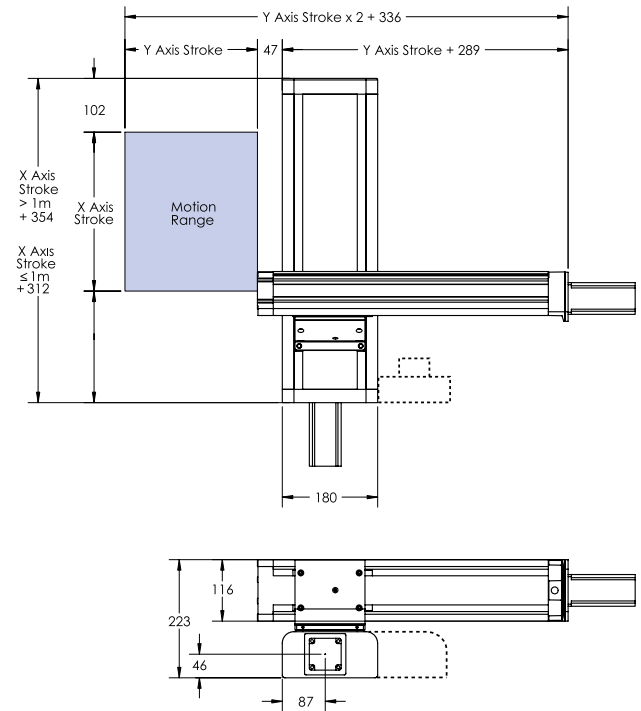
Combination Type: RX-HM



Type A



Type B



Note: Assembly of system required

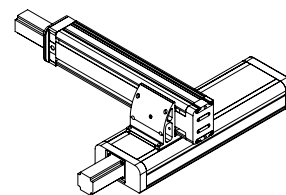
Combination Type and Reference Numbers

Combination Type	Type A or B	Ref Page
X Axis	XY-HRS0**0-RH*SNF	16 & 17
X Axis Motor Mounting Kit	XY-P****RM	18 & 19
Y Axis	XY-HRS0*5-RM*SNF	15
Y Axis Motor Mounting Kit	XY-P****RM	18 & 19
XY Combining Bracket	XY-P175XHM-1	40
Options:		
Limit Sensor Kit, X Axis	XY-L3542RM	42
Limit Sensor Kit, Y Axis	XY-L3543RM	42
X Axis Module Mounting Plate	XY-P170H-1	41
Square Nut	XY-P170M3-1	43

Transportable Mass Table [kg]

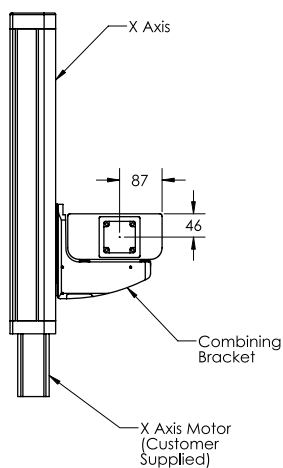
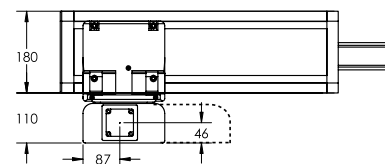
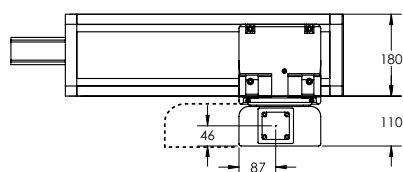
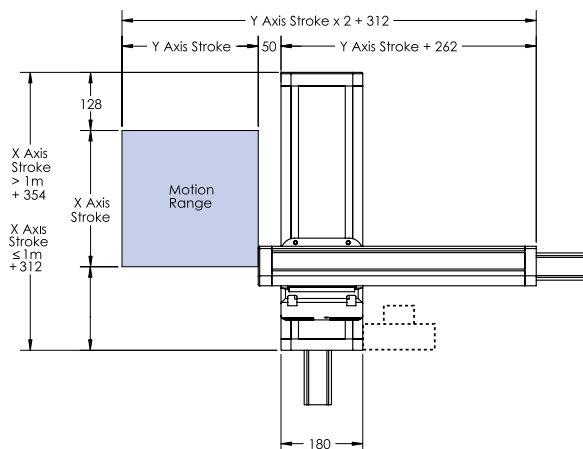
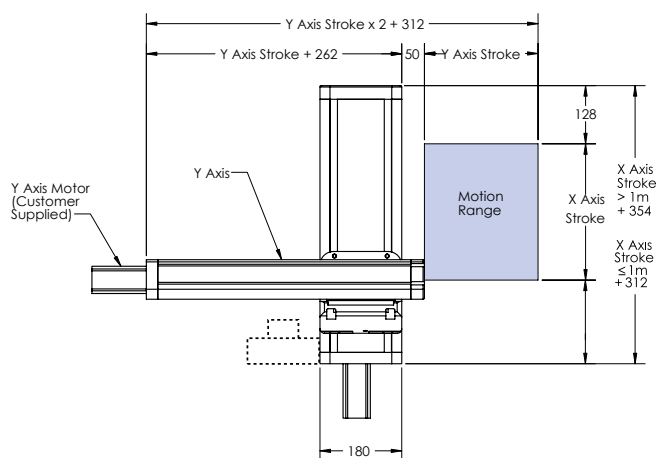
Acceleration m/s ²	Y Axis Stroke, mm					
	250	350	450	550	750	950
3.3	24	19	15	12	7	3
4.9	21	16	12	9	5	2

Combination Type: RX-HH



Type A

Type B



Note: Assembly of system required

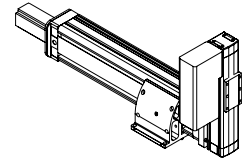
Combination Type and Reference Numbers

Combination Type	Type A or B	Ref Page
X Axis	XY-HRS0**0-RH*SNF	16 & 17
X Axis Motor Mounting Kit	XY-P****RM	18 & 19
Y Axis	XY-HRS0*0-RH*SNF	16 & 17
Y Axis Motor Mounting Kit	XY-P****RM	18 & 19
XY Combining Bracket	XY-P175XHH-1	40
Options:		
Limit Sensor Kit, X Axis	XY-L3542RM	42
Limit Sensor Kit, Y Axis	XY-L3542RM	42
X Axis Module Mounting Plate	XY-P170H-1	41
Square Nut	XY-P170M3-1	43

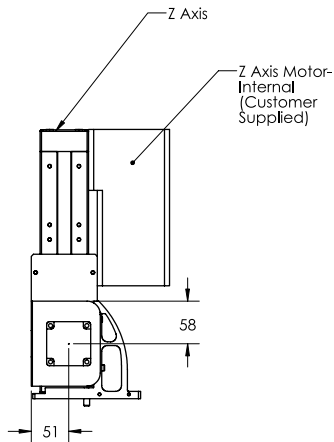
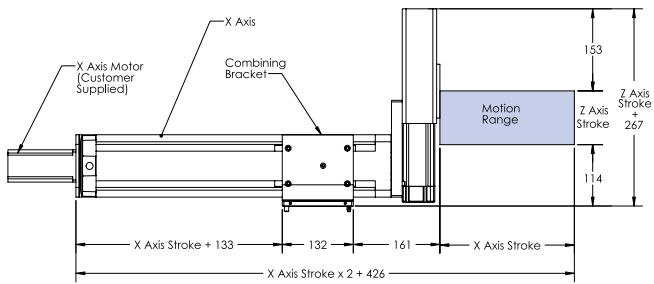
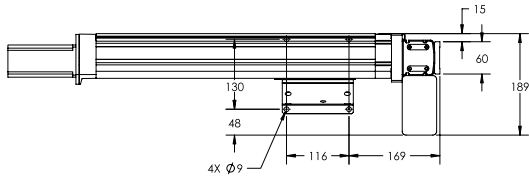
Transportable Mass Table [kg]

Acceleration m/s ²	Y Axis Stroke, mm					
	300	400	500	600	800	1000
3.3	40	40	40	40	29	29
4.9	40	40	40	39	28	19

Combination Type: RC-MS

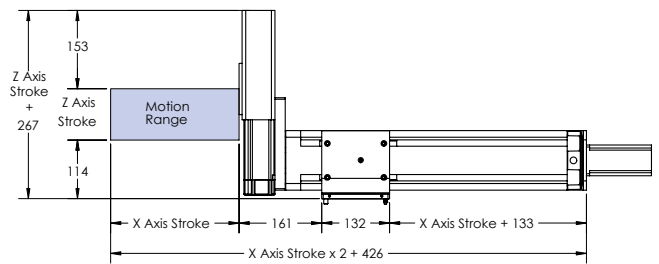
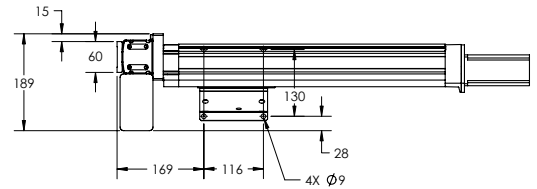


Type A



Note: Assembly of system required

Type B



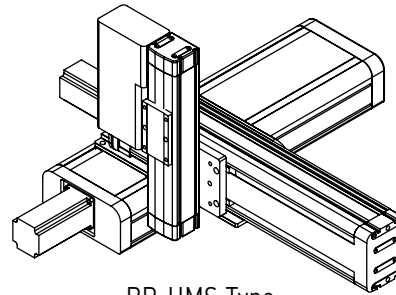
Combination Type and Reference Numbers

Combination Type	Type A	Type B	Ref Page
X Axis	XY-HRS0°5-RM°SNF		15
X Axis Motor Mounting Kit	XY-P****RM		18 & 19
Z Axis	XY-HRS0°0-RS1L°F	XY-HRS0°0-RS1R°F	12 & 13
XY Combining Bracket	XY-P175XHM-1, XY-P175CMS-1		40
Options:			
Limit Sensor Kit, X Axis	XY-L3543RM		42
Limit Sensor Kit, Z Axis	XY-L3544RM		42
X Axis Module Mounting Plate	NA		41
Square Nut	XY-P170M3-1		43

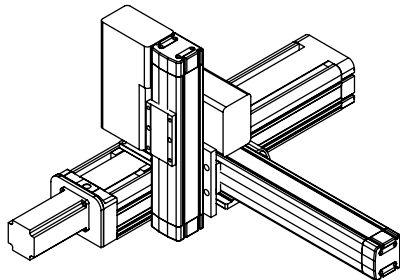
Transportable Mass Table [kg]

Z Axis Stroke	Acceleration m/s ²	X Axis Stroke, mm			
		250	350	450	550
100mm	3.9	8	8	8	5.4
	4.9	8	8	5.4	2.4
200mm	3.9	8	8	7	4.7
	4.9	8	8	4.7	1.7

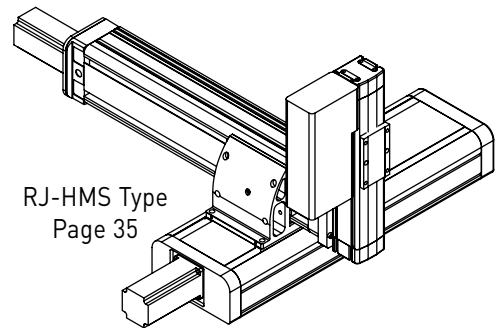
3 Axis Combinations



RP-HMS Type
Page 32



RP-MSS Type
Page 34



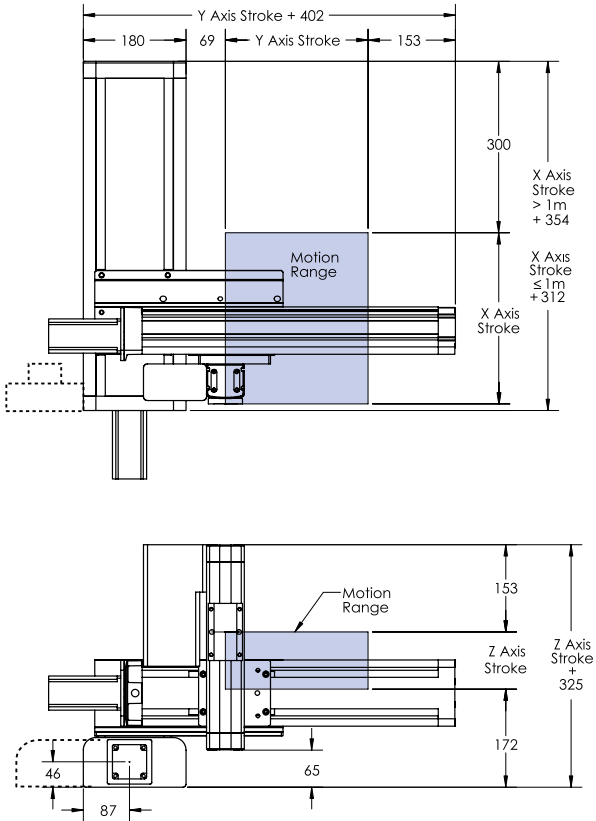
RJ-HMS Type
Page 35

3-Axis Selection

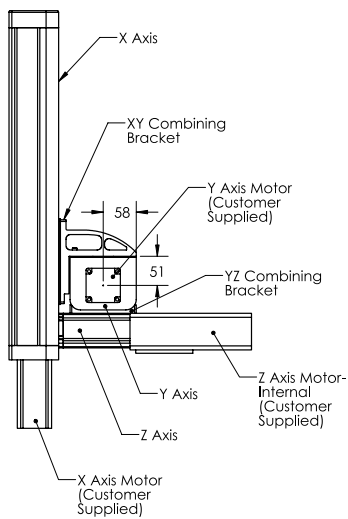
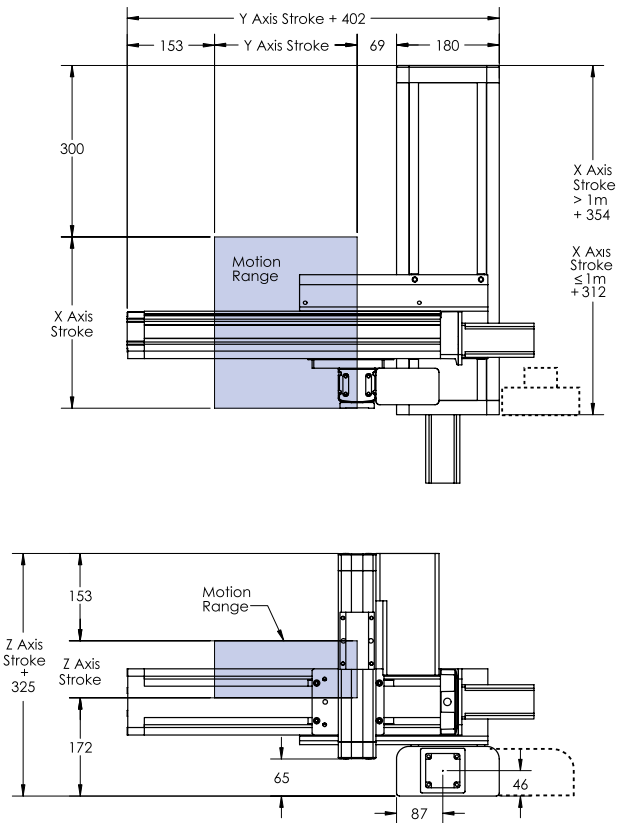
Combination	Type	X Axis	Y Axis	Z Axis	XY Combining Bracket	YZ Combining Bracket	Module Mounting Plate	Limit Sensor Kit	Square Nut
RJ-HMS	Type A Type B	XY-HRS0*0-RH*SNF & XY-P****RM	XY-HRS0*5-RM*SNF & XY-P****RM	XY-HRS0*0-RS1L*F XY-HRS0*0-RS1R*F	XY-P175XHM-1	XY-P175CMS-1	XY-P170H-1	X Axis: XY-L3542RM Y Axis: XY-L3543RM Z Axis: XY-L3544RM	
RP-HMS	Type A or C Type B or D	XY-HRS0*0-RH*SNF & XY-P****RM	XY-HRS0*5-RM*SNF & XY-P****RM	XY-HRS0*0-RS1L*F XY-HRS0*0-RS1R*F	XY-P175GHM-1 XY-P175GHM-2	XY-P175DMS-1	XY-P170H-1	X Axis: XY-L3542RM Y Axis: XY-L3543RM Z Axis: XY-L3544RM	XY-P170M3-1
RP-MSS	Type A or B	XY-HRS0*5-RM*SNF & XY-P****RM	XY-HRS0*0-RS1R*F	XY-HRS0*0-RS1L*F	XY-P175GMS-1	XY-P175DSS-1	XY-P170M-1	X Axis: XY-L3543RM Y Axis: XY-L3544RM Z Axis: XY-L3544RM	

Combination Type: RP-HMS

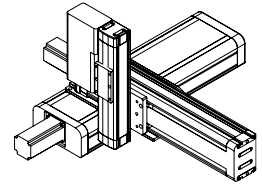
Type A



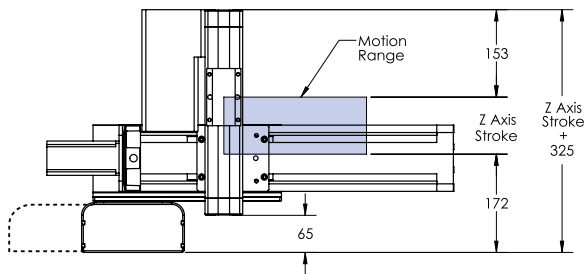
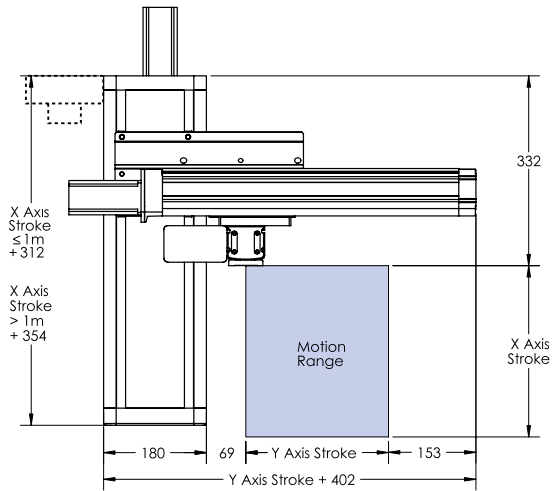
Type B



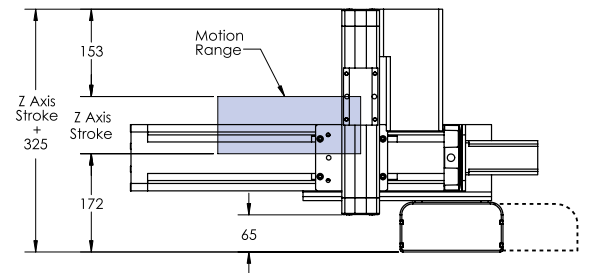
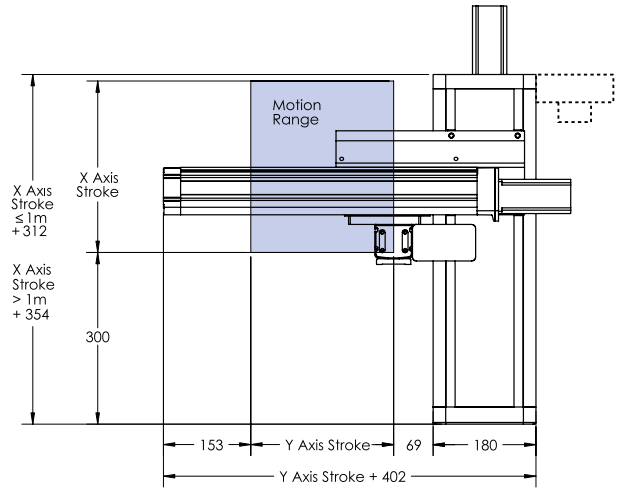
Note: Assembly of system required



Type C



Type D



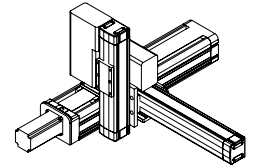
Combination Type and Reference Numbers

Combination Type	Type A	Type B	Ref Page
X Axis	XY-HRS**0-RH*SNF		16 & 17
X Axis Motor Mounting Kit	XY-P****RM		18 & 19
Y Axis	XY-HRS0*5-RM*SNF		15
Y Axis Motor Mounting Kit	XY-P****RM		18 & 19
Z Axis	XY-HRS0*0-RS1L*F	XY-HRS0*0-RS1R*F	12 & 13
XY Combining Bracket	XY-P175GHM-1	XY-P175GHM-2	39
YZ Combining Bracket	XY-P175DMS-1		39
Options:			
Limit Sensor Kit, X Axis	XY-L3542RM		42
Limit Sensor Kit, Y Axis	XY-L3543RM		42
Limit Sensor Kit, Z Axis	XY-L3544RM		42
X Axis Module Mounting Plate	XY-P170H-1		41
Square Nut	XY-P170M3-1		43

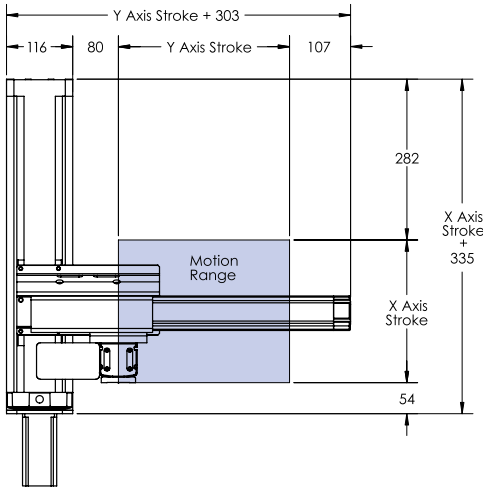
Transportable Mass Table [kg]

Z Axis Stroke	Acceleration m/s ²	Y Axis Stroke, mm					
		250	350	450	550	750	950
100 or 200	4.9	20	20	20	20	20	16
	9.8	20	20	20	20	12.6	6.6

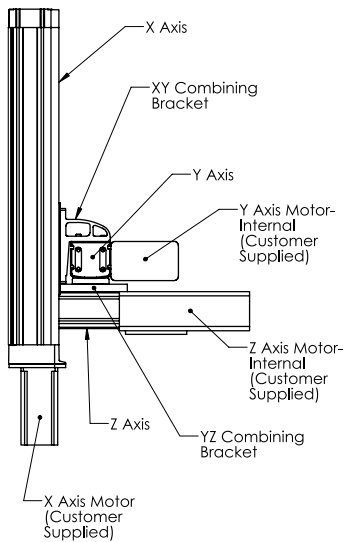
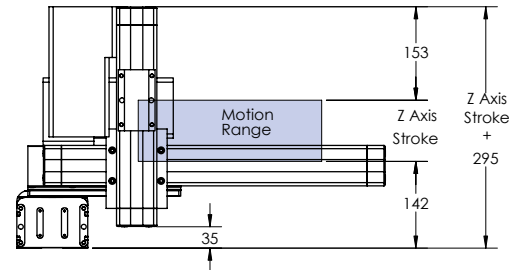
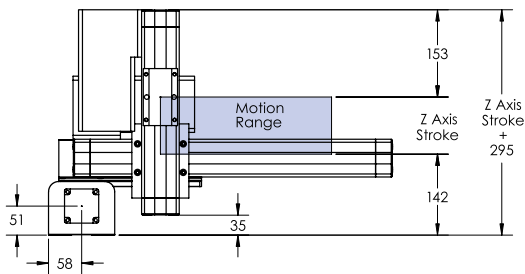
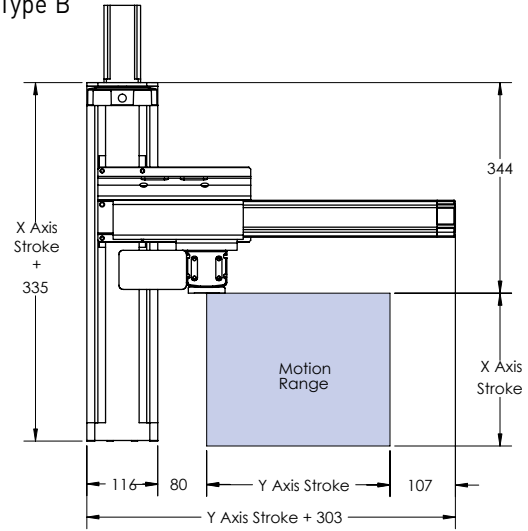
Combination Type: RP-MSS



Type A



Type B



Note: Assembly of system required

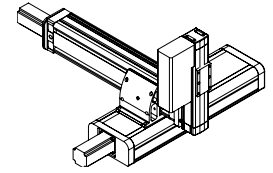
Combination Type and Reference Numbers

Combination Type	Type A and B	Ref Page
X Axis	XY-HRS0*5-RM*SNF	15
X Axis Motor Mounting Kit	XY-P****RM	18 & 19
Y Axis	XY-HRS0*0-RS1R*F	13
Z Axis	XY-HRS0*0-RS1L*F	12
XY Combining Bracket	XY-P175GMS-1	39
YZ Combining Bracket	XY-P175DSS-1	38
Options:		
Limit Sensor Kit, X Axis	XY-L3543RM	42
Limit Sensor Kit, Y Axis	XY-L3544RM	42
Limit Sensor Kit, Z Axis	XY-L3544RM	42
X Axis Module Mounting Plate	XY-P170M-1	41
Square Nut	XY-P170M3-1	43

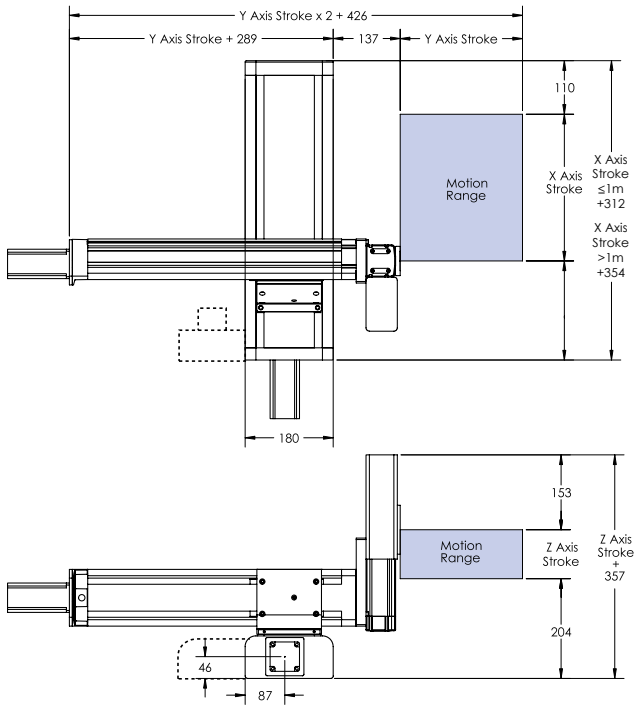
Transportable Mass Table [kg]

Z Axis Stroke	Acceleration m/s ²	X Axis Stroke, mm			
		100	200	300	400
100mm	4.9	8	8	4.8	1.8
	9.8	8	5.8	2.8	-
200mm	4.9	8	8	4.1	1.1
	9.8	8	5.1	2.1	-

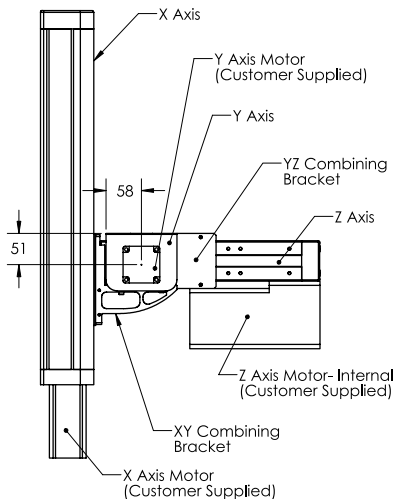
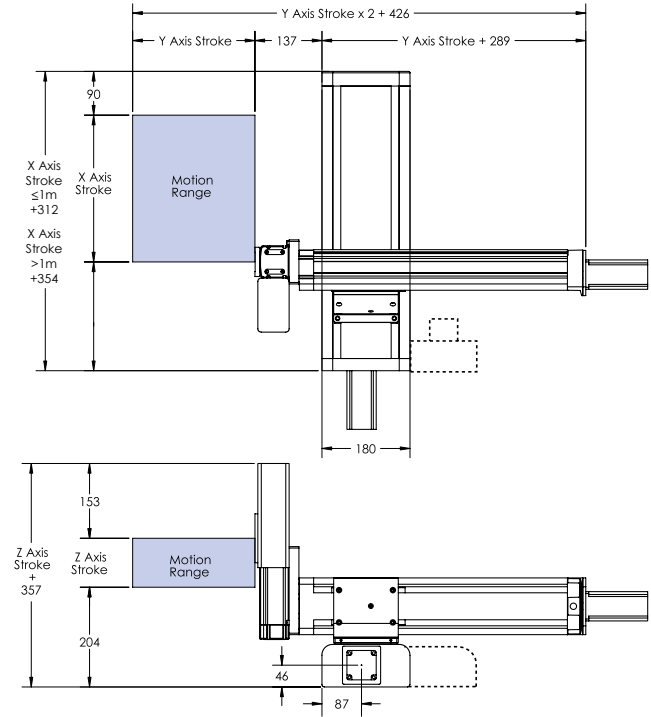
Combination Type: RJ-HMS



Type A



Type B



Note: Assembly of system required

Combination Type and Reference Numbers

Combination Type	Type A	Type B	Ref Page
X Axis	XY-HRS**0-RH*SNF		16 & 17
X Axis Motor Mounting Kit	XY-P***RM		18 & 19
Y Axis	XY-HRS0*5-RM*SNF		15
Y Axis Motor Mounting Kit	XY-P***RM		18 & 19
Z Axis	XY-HRS0*0-RS1L*F	XY-HRS0*0-RS1R*F	12 & 13
XY Combining Bracket	XY-P175XHM-1		40
YZ Combining Bracket	XY-P175CMS-1		40
Options:			
Limit Sensor Kit, X Axis	XY-L3542RM		42
Limit Sensor Kit, Y Axis	XY-L3543RM		42
Limit Sensor Kit, Z Axis	XY-L3544RM		42
X Axis Module Mounting Plate	XY-P170H-1		41
Square Nut	XY-P170M3-1		43

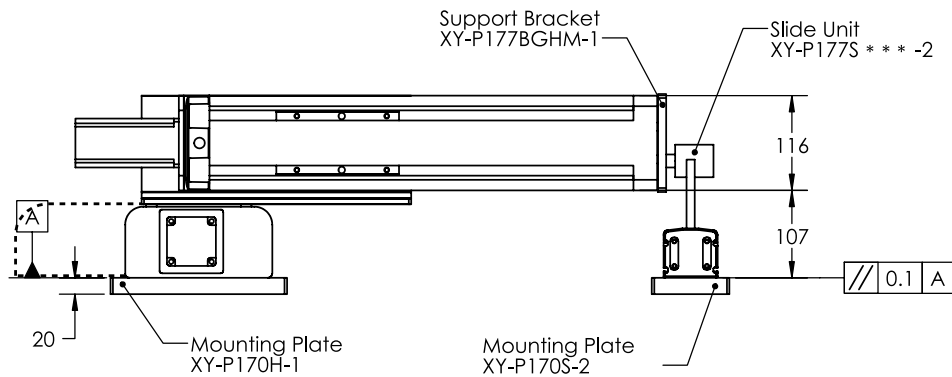
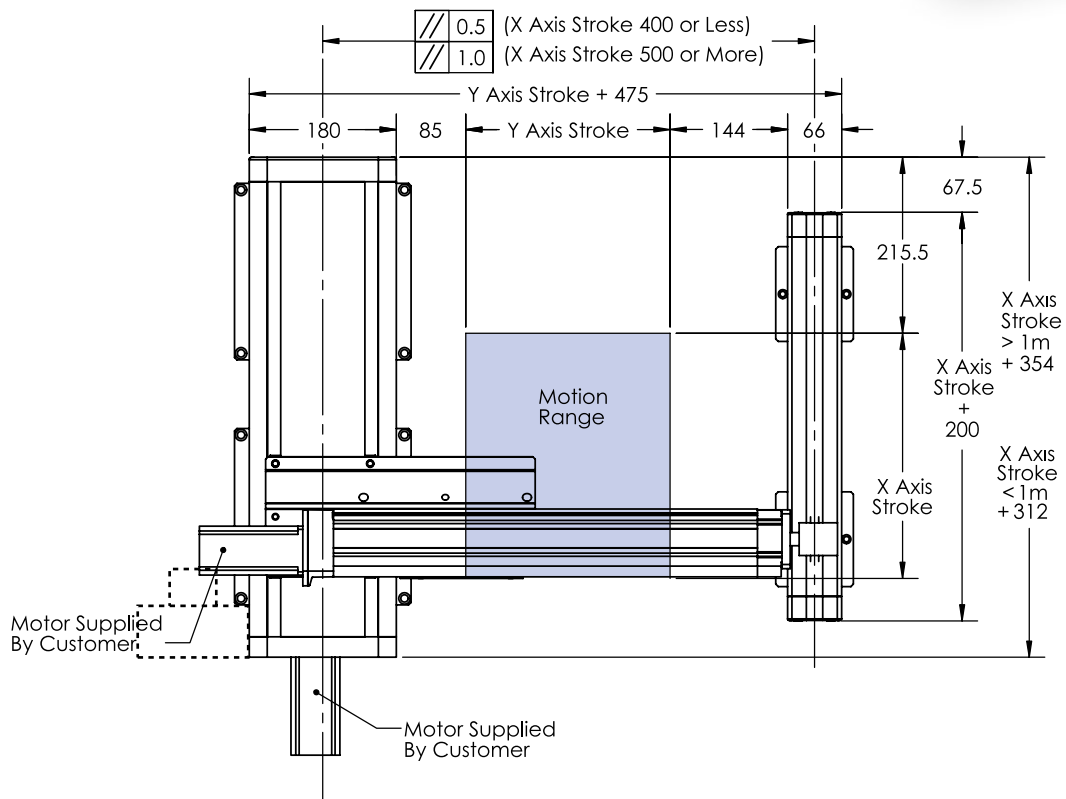
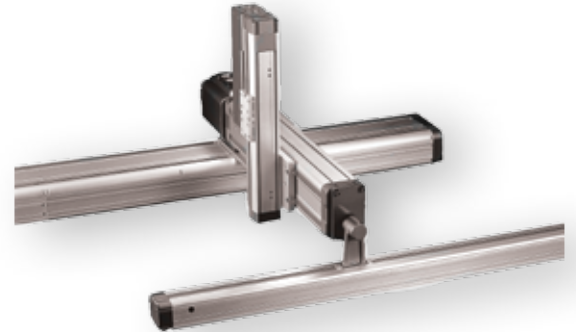
Transportable Mass Table [kg]

Z Axis Stroke	Acceleration m/s^2	X Axis Stroke, mm			
		250	350	450	550
100mm	3.3	8	8	8	5.4
	4.9	8	8	5.4	2.4
200mm	3.3	8	8	7.7	4.7
	4.9	8	8	4.7	1.7

Accessories

Support Slide

For Combination Types: RG-HM and RP-HMS

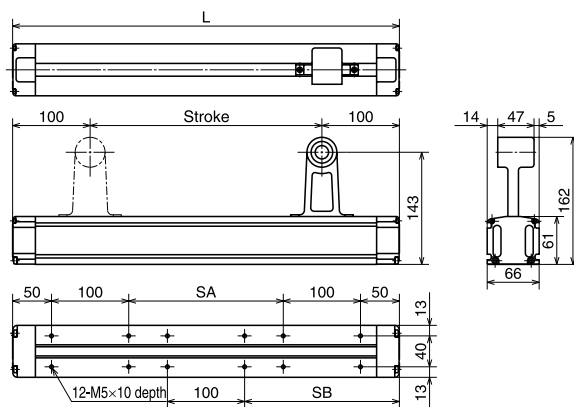


Slide unit

Example of reference number:

XY-P177S030-2

Stroke Ex.
030: 300 mm



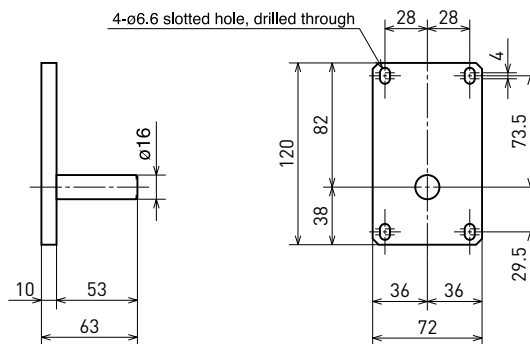
For stroke 300 to 1,000

Part Number	Stroke, mm	L, mm	SA, mm	SB, mm	SE, mm	Mass, kg
XY-P177S030-2	300	500	200	200	150	4.8
XY-P177S040-2	400	600	300	250	200	5.4
XY-P177S050-2	500	700	400	300	250	6.0
XY-P177S060-2	600	800	500	350	300	6.6
XY-P177S080-2	800	1000	700	450	400	7.8
XY-P177S100-2	1000	1200	900	550	500	9.0

Support bracket

Reference number:

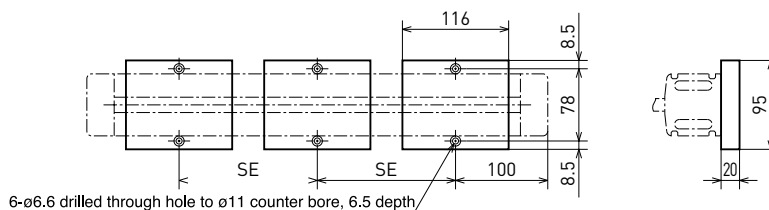
XY-P177BGHM-1



Module mounting plate

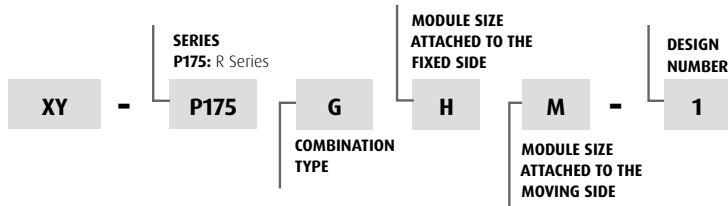
Reference number:

XY-P170S-2



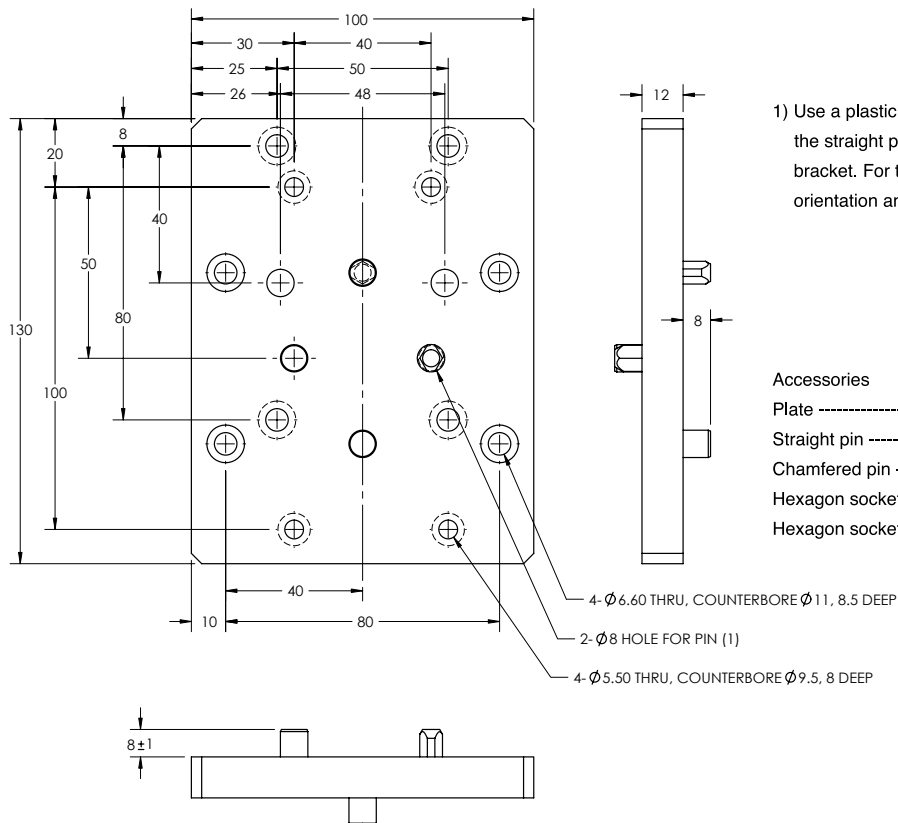
* We recommend three plates per slide. Reference number designates a quantity of 1 plate.

Combining Brackets



- Brackets for combining modules into 2-axis and 3-axis mechanisms.
- Combining brackets contain dowel pins to ensure a high reproducibility of assembly accuracy.

XY-P175DSS-1

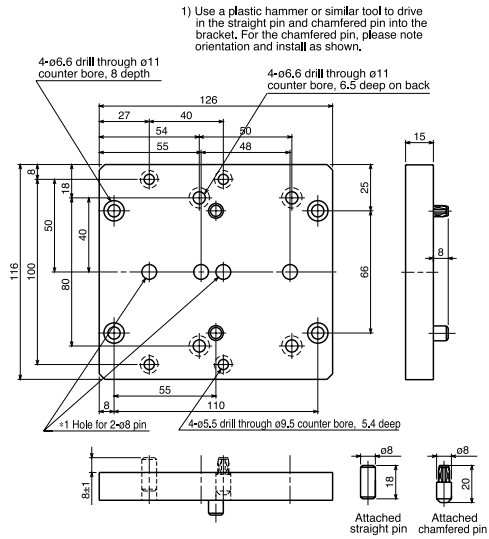


1) Use a plastic hammer or similar tool to install the straight pin and chamfered pin into the bracket. For the chamfered pin, please note orientation and install as shown.

Accessories

- Plate ----- 1 pc.
- Straight pin ----- 1 pc.
- Chamfered pin ----- 1 pc.
- Hexagon socket head cap screw M5×18 ---- 8 pcs.
- Hexagon socket head cap screw M6×10 ---- 8 pcs.

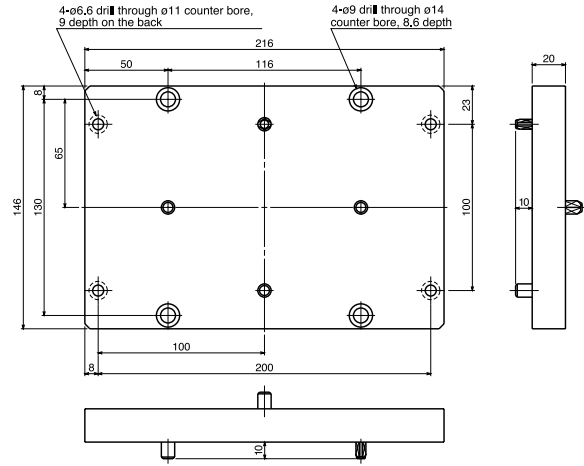
XY-P175DMS-1



About 0,6kg

Accessories:
 Straight pin 1 pcs.
 Chamfered pin 1 pcs.
 Hexagon socket head cap screw M5×18 4 pcs.
 Hexagon socket head cap screw M6×16 8 pcs.

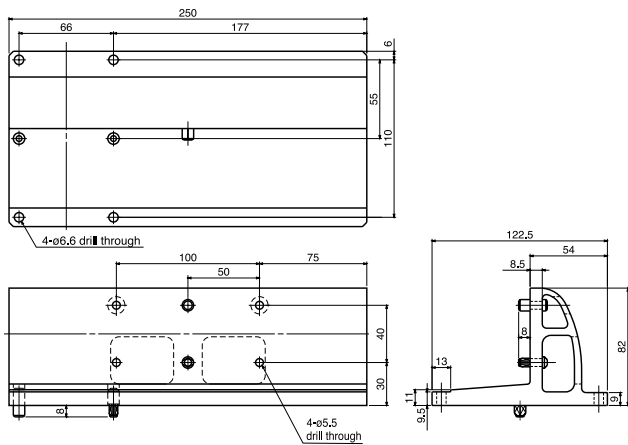
XY-P175DHM-1



About 1,6kg

Accessories
 Hexagon socket head cap screw M6×20 4 pcs.
 Hexagon socket head cap screw M6×25 4 pcs.

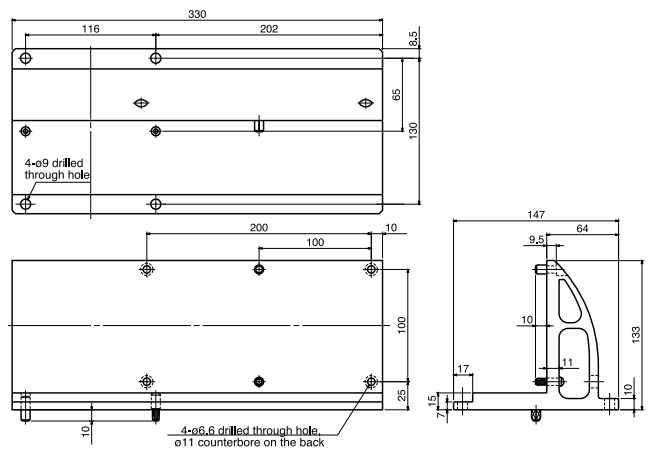
XY-P175GMS-1



About 1.6kg

Accessories
 Hexagon socket head cap screw M6×18 4 pcs.
 Hexagon socket head cap screw M5×16 4 pcs.

XY-P175GHM-1



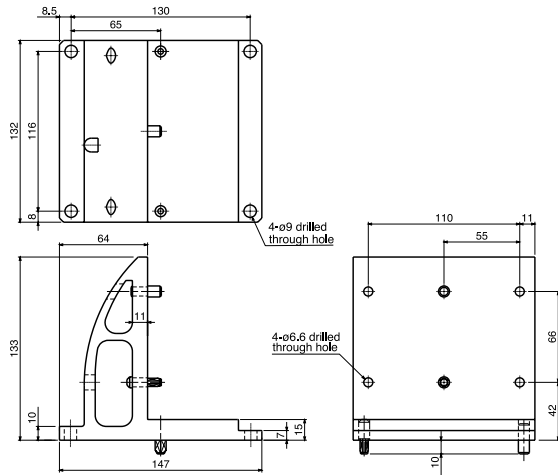
About 3.6kg

Accessories
 Hexagon socket head cap screw M8×20 4 pcs.
 Hexagon socket head cap screw M6×20 4 pcs.

Mirror image bracket: XY-P175GHM-2

Combining Brackets (continued)

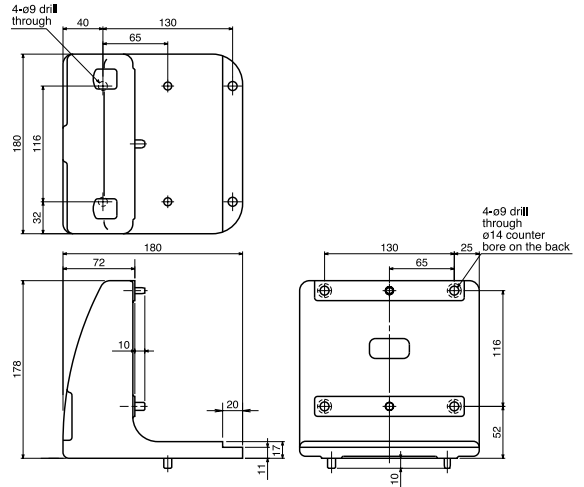
XY-P175XHM-1



About 1.4kg

Accessories:
Hexagon socket head cap screw M8 × 20 ----- 4 pcs.
Hexagon socket head cap screw M6 × 20 ----- 4 pcs.

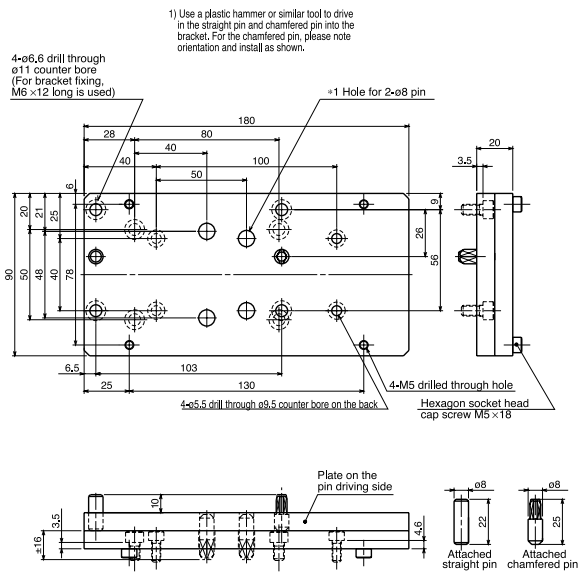
XY-P175XHH-1



About 4.0kg

Accessory
Hexagon socket head cap screw M8 × 25 ----- 8 pcs.

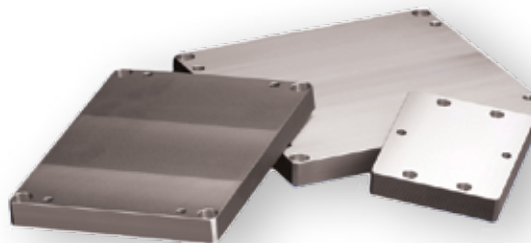
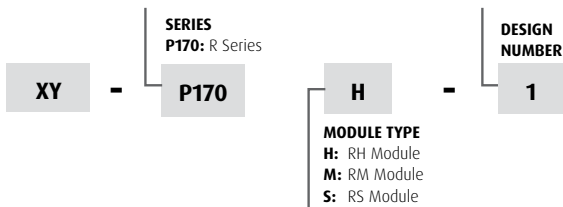
XY-P175CMS-1



About 0.9kg

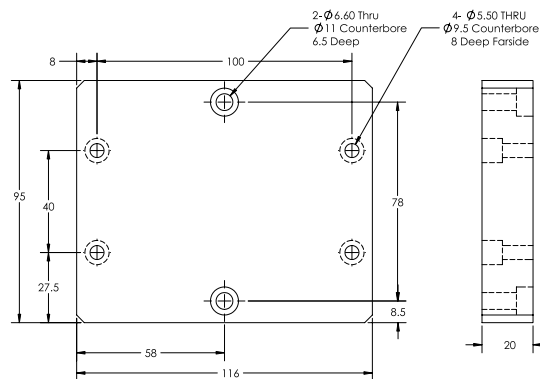
Accessories:
Straight pin ----- 1 pc.
Chamfered pin ----- 1 pc.
Hexagon socket head cap screw M5 × 12 ----- 4 pcs.
Hexagon socket head cap screw M5 × 18 ----- 4 pcs.
Hexagon socket head cap screw M6 × 10 ----- 4 pcs.
Hexagon socket head cap screw M6 × 12 ----- 4 pcs.

Module Mounting Plates



- These plates are used for mounting the module in a “top down manner”.
- Two mounting plates are required per fixed module.
- Part number designates a quantity of one mounting plate.

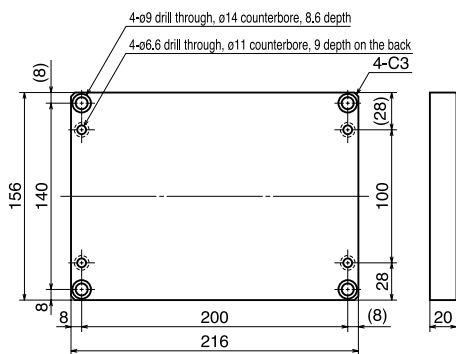
XY-P170S-2



About 0.4kg

Accessory
Hexagon socket head bolt M5 x 20 — 4 pcs

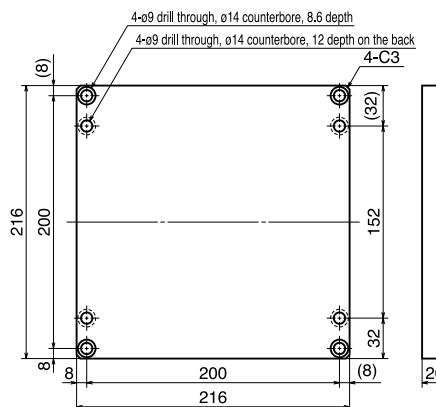
XY-P170M-1



About 1.8kg

Accessory
Hexagon socket head bolt M6 x 20 — 4 pcs.

XY-P170H-1



About 2.4kg

Accessory
Hexagon socket head bolt M8 x 20 — 4 pcs.

Limit Sensor Kits

XY - **L** **3542** **RM**

SENSOR KIT
3542: RH Sensor Kit
3543: RM Sensor Kit
3544: RS Sensor Kit

- Provides necessary hardware to set module stroke limits and home position externally.
- Specially designed kit for each module type.
- Sensors are mounted using module T-slots for maximum flexibility in positioning sensors.
- Kits come with “High-Flex” sensor cable for high reliability.
- Sensor flag mounts below slider mounting surface.



RH Module Sensor Kit- PN XY-L3542RM

- RH Module Limit Sensor Flag qty 1
- Limit Sensor (Omron EE-SX672A) qty 3
- Limit Sensor Cable with Connector, 2m long (Omron EE-1010-R2M) qty 3
- Limit Sensor T-Slot Nut Plate..... qty 3
- M3 x 8 Socket Head Cap Screw qty 6
- M3 x 6 Flat Head Screw..... qty 1

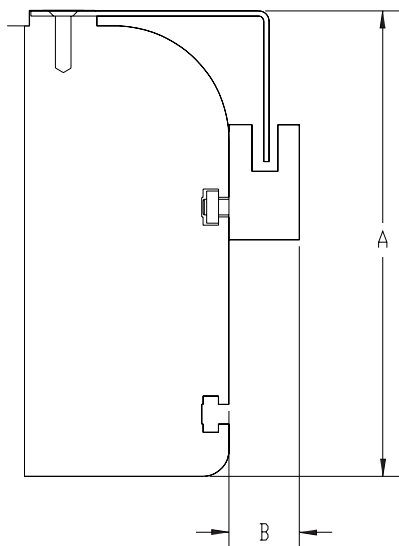
RM Module Sensor Kit- PN XY-L3543RM

- RM Module Limit Sensor Flag..... qty 1
- Limit Sensor (Omron EE-SX672A) qty 3
- Limit Sensor Cable with Connector, 2m long (Omron EE-1010-R2M) qty 3
- Limit Sensor T-Slot Nut Plate..... qty 3
- M3 x 8 Socket Head Cap Screw qty 6
- M3 x 6 Flat Head Screw..... qty 1

RS Module Sensor Kit- PN XY-L3544RM

- RS Module Limit Sensor Flag..... qty 1
- Limit Sensor (Omron EE-SX672A) qty 3
- Limit Sensor Cable with Connector, 2m long (Omron EE-1010-R2M) qty 3
- Limit Sensor T-Slot Nut Plate..... qty 3
- M3 x 8 Socket Head Cap Screw qty 6
- M3 x 6 Flat Head Screw..... qty 1

Module Cross Section



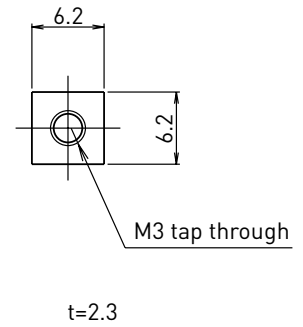
	Dimension A	Dimension B
RH Module	90mm	14mm
RM Module	85mm	14mm
RS Module	70mm	14mm

Square Nut for Module T-Slots

XY - **P170** **M** **3** - **1**

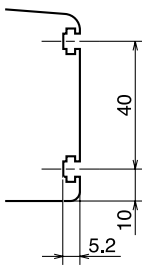
- This nut is used to secure accessories to the side of the module.
- Nuts are supplied in sets of 4.
- T-slot locations are shown below for the various module types.

XY-P170M3-1

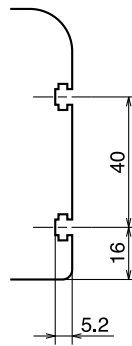


T-Slot Locations on Modules

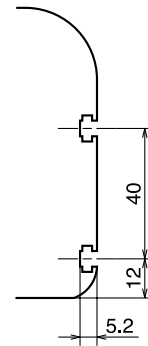
RS Module



RM Module



RH Module



Worldwide Sales Offices

NSK Ltd. Headquarters, Tokyo, Japan

Asia Business Strategic Division-
Headquarters tel: 81-03-3779-7145
Industrial Machinery Bearings Division-
Headquarters tel: 81-03-3779-7227
Automotive Division-Headquarters tel: 81-03-3779-7189
Needle Roller Bearings Strategic
Division-Headquarters tel: 81-03-3779-2563
Precision Machinery & Parts
Division-Headquarters tel: 81-03-3779-7219

www.nsk.com

Africa

South Africa:

NSK South Africa (Pty) Ltd.
Johannesburg tel: 27-011-458-3600

Asia and Oceania

Australia:

NSK Australia Pty. Ltd. www.nskaustralia.com.au
Melbourne tel: 61-03-9764-8302

China:

NSK Hong Kong Ltd. tel: 86-2739-9933
Hong Kong
Kunshan NSK Co., Ltd. tel: 86-0520-730-5654
Kunshan Plant
Changshu NSK Needle Bearing Co., Ltd. tel: 86-0512-5230-1111
Jiangsu Plant
Guizhou HS NSK Bearings Co., Ltd. tel: 86-0853-3521505
Anshun Plant
NSK Steering Systems Dongguan Co., Ltd. tel: 86-0769-262-0960
Dongguan Plant
Zhangjiagang NSK Precision Machinery Co., Ltd. tel: 86-0512-5867-6496
Jiangsu Plant
Timken-NSK Bearings (Suzhou) Co., Ltd. tel: 86-0512-6665-5666
Jiangsu Plant
NSK China Technology Center tel: 86-0512-5771-5654
Jiangsu
NSK (Shanghai) Trading Co., Ltd. tel: 86-021-6235-0198
Shanghai
Beijing tel: 86-010-6590-8161
Guangzhou tel: 86-020-3786-4833
Anshun tel: 86-0853-3522522
Chengdu tel: 86-028-8661-4200
Shenzhen tel: 86-0755-25904886
Changchun tel: 86-0431-8988682
NSK (China) Investment Co., Ltd. tel: 86-021-6235-0198
Shanghai

India:

Rane NSK Steering Systems Ltd. tel: 91-044-274-66002
Chennai
NSK Ltd. India Branch Office tel: 91-044-2446-6862
Chennai

Indonesia:

PT. NSK Bearings Manufacturing Indonesia
Jakarta tel: 62-021-898-0155
PT. NSK Indonesia
Jakarta tel: 62-021-252-3458

Korea:

NSK Korea Co., Ltd. www.kr.nsk.com
Seoul tel: 82-02-3287-0300
Changwon Plant tel: 82-055-287-6001

Malaysia:

NSK Bearings (Malaysia) Sdn. Bhd. tel: 60-03-7722-3372
Kuala Lumpur
NSK Micro Precision (M) Sdn. Bhd. tel: 60-03-961-6288
Malaysia Plant

New Zealand:

NSK New Zealand Ltd. www.nsk-rhp.co.nz
Auckland tel: 64-09-276-4992

Philippines:

NSK Representative Office
Makati City tel: 63-02-893-9543

Russia:

NSK Polska Sp. z o.o. tel: 7-812-3325071
Saint-Petersburg

Singapore:

NSK International (Singapore) Pte Ltd. tel: 65-6496-8000
Singapore www.nsk-singapore.com.sg
NSK Singapore (Pte) Ltd. tel: 65-6496-8000
Singapore

Taiwan:

Taiwan NSK Precision Co., Ltd. tel: 886-02-2509-3305
Taipei

Thailand:

NSK Bearings (Thailand) Co., Ltd. tel: 66-02-6412-150
Bangkok
SIAM NSK Steering Systems Co., Ltd. tel: 66-038-522-343-350
Chachoengsao tel: 66-038-522-343-350
NSK Asia Pacific Technology Center (Thailand) Co., Ltd. tel: 66-038-454631-454633
Chonburi

United Arab Emirates:

NSK Bearings Gulf Trading Co. tel: 971-4-804-8205
Dubai

Vietnam:

NSK Representative Office tel: 84-04-935-1269
Hanoi

Europe

NSK Europe Ltd. www.nskeurope.com
(European Headquarters) tel: 44-01628-509800
Maidenhead, U.K.

France:

NSK France S.A.S. tel: 33-1-30573939
Paris

Germany:

NSK Deutschland GmbH tel: 49-2102-4810
Düsseldorf

Italy:

NSK Italia S.p.A. tel: 39-02-995191
Milano

Poland:

NSK Polska Sp. z o.o. tel: 48-22-6451525
Warsaw

Spain:

NSK Spain S.A. tel: 34-93-2892763
Barcelona

Turkey:

NSK Rulmanlari Orta Dogu Tic. Ltd Sti tel: 90-216-4777111

United Kingdom:

NSK UK Ltd. tel: 44-1636-605123
Newark

North and South America

NSK Americas, Inc. (American Headquarters)
Ann Arbor tel: 1-734-913-7500

Argentina:

NSK Argentina SRL tel: 54-011-4762-6556
Buenos Aires

Brazil:

NSK Brasil Ltda. www.br.nsk.com
São Paulo tel: 55-011-3269-4700

Canada:

NSK Canada Inc. www.ca.nsk.com
Toronto tel: 1-905-890-0740

Mexico:

NSK Rodamientos Mexicana, S.A. de C.V. www.mx.nsk.com
Mexico City tel: 52-55-36822900

United States of America:

NSK Corporation www.nskamericas.com
Ann Arbor tel: 1-734-913-7500

NSK American Technology Center
Ann Arbor tel: 1-734-913-7500

NSK Precision America, Inc. www.nskamericas.com
Franklin tel: 800-255-4773

NSK Steering Systems America, Inc. www.nssa.nsk.com
Bennington, Vermont tel: 1-802-442-5448

NSK Latin America, Inc. www.la.nsk.com
Miami tel: 1-305-477-0605

NSK Ltd. has a basic policy not to export any products or technology designated as controlled items by export-related laws. When exporting the products in this brochure, the laws of the exporting country must be observed. Specifications are subject to change without notice and without any obligation on the part of the manufacturer. Every care has been taken to ensure the accuracy of the data contained in this brochure, but no liability can be accepted for any loss or damage suffered through errors or omissions. We will gratefully acknowledge any additions or corrections.

