

PART SOLUTIONS

NSK Linear Precision



US Content of the CAD catalogue in PARTsolutions.
For more catalogues visit www.cadenas.de


D Inhalt des CAD-Kataloges in PARTsolutions.
Weitere Kataloge auf www.cadenas.de

F Contenu du catalogue CAO dans PARTsolutions.
Pour d'autres catalogues visitez www.cadenas.de


I Contenuto del catalogo nel PARTsolutions
altri cataloghi visitate www.cadenas.de

E Contenido del catálogo de CAD en PARTsolutions.
Para mas catálogos visite www.cadenas.de


INFORMATION

 With PARTsolutions you are able to access a large range of standard and supplier parts as CAD system independent 2D and 3D geometry. Independent means the models are converted natively in practically every CAD system. When using CATIA for example, a real CATIA model will be generated from our model and can of course be edited and manipulated for downstream applications. Interfaces are available for all common CAD systems (see list below).


Integrations also exist to the most notable ERP/PDM systems (see list below).

 Mit PARTsolutions steht Ihnen eine grosse Anzahl Normteile und Zukaufteile als CAD unabhängige 3D und 2D Geometrie zur Verfügung. Unabhängig heisst, sie können in jedes CADSystem nativ übertragen werden. Der User von PARTsolutions erhält so in Verbindung mit z.B. CATIA ein echtes CATIA-Modell, das in seiner Konstruktion dann selbstverständlich weitermodelliert werden kann. Schnittstellen für jedes gängige CAD System sind verfügbar (siehe Liste unten).


In weiteren Ausbaustufen sind auch Anbindungen an ERP/PDM Systeme möglich (siehe Liste unten).

 Avec PARTsolutions vous avez à votre disposition un grand nombre de composants normalisés et de pièces d'achat comme géométrie CAO indépendante du 2D et 3D. Indépendant veut dire qu'ils peuvent être transmis nativement dans presque tous les systèmes CAO. Ainsi l'utilisateur de PARTsolutions obtient une liaison avec un vrai modèle CATIA, en prenant CATIA comme exemple, qui peut être naturellement continuellement modélisé dans sa construction. Des interfaces pour tous les systèmes CAO courants sont disponibles (voir la liste ci-dessous).

Dans d'autres degrés d'extension, des liaisons avec des systèmes ERP/PDM sont aussi possibles (voir la liste ci-dessous).

 Con PARTsolutions è possibile accedere a una grande quantità di parti standard e commerciali sotto forma di geometria 2D e 3D indipendente dal sistema CAD. Ciò significa che i modelli vengono convertiti nel formato nativo di praticamente tutti i sistemi CAD in commercio. Usando per esempio CATIA, viene generato un vero modello CATIA che può essere modificato e manipolato per successivi utilizzi. Le interfacce CAD disponibili sono elencate qui sotto.

Esistono anche integrazioni coi principali sistemi ERP/PDM (vedere la lista qui sotto).

 Con PARTsolutions tiene a su disposición un gran número de estándares y normas de la industria como un sistema CAD de geometría independiente 2D y 3D. Independiente significa que se pueden transmitir de forma nativa a prácticamente entodos los sistemas CAD. El usuario de PARTsolutions posee de este modo en el usopor ejemplo de CATIA un modelo original de CATIA, en el cual por supuesto se puede seguir modelando. Interfaces para cada sistema CAD disponible son disponibles (ver lista abajo).

También son posibles integraciones para sistemas ERP/PDM (ver lista abajo)

Native CAD formats:

ADEM, AllPlan, AutoCad, Bihler CAT, Cadceus, Caddy, CADISON, Cadkey, Cadra, Catia, CCD/ProfCADAM, Cimatron, Fides, Helix, HiCAD, Ideas, Inventor, Logocad Triga, Mastercam, Materialise, Mechanical Desktop, Medusa, MegaCAD, Microstation, One Space Designer, Parasolid, ProE, SolidDesigner, SolidEdge, SolidWorks, Swiss Precision, Thinkdesign, TopSolid, Unigraphics, Varimetrix, Vsi Series.

Neutral CAD formats:

SAT, STEP, IGES, DXF.

ERP/PDM Systeme:

SAP, Teamcenter, smarteam, Windchill, Insight, Compass, Gain, ProCad, Eigner. Weitere Schnittstellen auf Anfrage.

1



US NSK Linear products

1.1



US NSK Linear Guides

1.1.1



US Standard series

1.1.1.1



US LH series

1.1.1.1.1



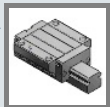
US LH-AN series

1.1.1.1.2



US LH-BN series

1.1.1.1.3



US LH-EL series

1.1.1.1.4



US LH-GL series

1.1.1.1.5



US LH-FL series

1.1.1.1.6



US LH-HL series

1.1.1.1.7



US LH-AL series

1.1.1.1.8



US LH-BL series

1.1.1.1.9



US LH-EM series

1.1.1.1.10



US LH-GM series

1.1.1.2



US LS series

1.1.1.2.1



US LS-AL series
D LS-AL series/High load type

1.1.1.2.2



US LS-CL series
D LS-CL series/Medium load type

1.1.1.2.3



US LS-EL series
D LS-EL series/High load type

1.1.1.2.4



- US LS-EM series
- D LS-EM series/High load type

1.1.1.2.5



- US LS-FL series
- D LS-FL series/High load type

1.1.1.2.6



- US LS-JL series
- D LS-JL series/Medium load type

1.1.1.2.7



- US LS-JM series
- D LS-JM series/Medium load type

1.1.1.2.8



- US LS-KL series
- D LS-KL series/Medium load type

1.1.1.3



- US LW series

1.1.1.4



- US LE series

1.1.1.4.1



- US LE-AL series
- D LE-AL series/Wide rail, miniature

1.1.1.4.2



- US LE-TL series
- D LE-TL series/Wide rail, miniature, large mounting tap hole

1.1.1.4.3



- US LE-AR series
- D LE-AR series/Wide rail, miniature, with ball retainer

1.1.1.4.4



- US LE-TR series
- D LE-TR series/Wide rail, miniature, large mounting tap hole, with ball retainer

1.1.1.4.5



- US LE-BL series
- D LE-BL series/High load type, with rail, miniature

1.1.1.4.6



- US LE-UL series
- D LE-UL series/High load type, with rail, miniature, with large mounting tap hole

1.1.1.4.7



- US LE-CL series
- D LE-CL series/High load type, with rail, miniature

1.1.1.4.8



- US LE-SL series
- D LE-SL series/High load type, with rail, miniature, with large mounting tap hole

1.1.1.5



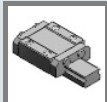
- US LU series

1.1.1.5.1



- US LU-AL series
- D LU-AL series/Miniature

1.1.1.5.2



- US LU-TL series
- D LU-TL series/Miniature, large mounting tap hole

1.1.1.5.3



- US LU-AR series
- D LU-AR series/Miniature, with ball retainer

1.1.1.5.4



- US LU-TR series
- D LU-TR series/Miniature, large mounting tap hole, with a ball retainer

1.1.1.5.5



- US LU-BL series
- D LU-BL series/High load type, miniature

1.1.1.5.6



- US LU-UL series
- D LU-UL series/High load type, miniature, large mounting hole

1.1.1.6



- US PE series

1.1.1.7



- US PU series

1.1.1.8



- US LA series

1.1.1.8.1



- US LA-AL series
- D LA-AL series/High load type

1.1.1.8.2



- US LA-AN series
- D LA-AN series/High load type

1.1.1.8.3



- US LA-BL series
- D LA-BL series/Super high load type

1.1.1.8.4



- US LA-BN series
- D LA-BN series/Super high load type

1.1.1.8.5



- US LA-EL series
- D LA-EL series/High load type

1.1.1.8.6



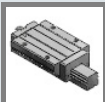
- US LA-FL series
- D LA-FL series/High load type

1.1.1.8.7



- US LA-GL series
- D LA-GL series/Super high load type

1.1.1.8.8



- US LA-HL series
- D LA-HL series/Super high load type

1.1.1.9



- US LY series

1.1.1.9.1



- US AL

1.1.1.9.2



- US AN

PARTsolutions

1.1.1.9.3



US BL

1.1.1.9.4



US BN

1.1.1.9.5



US EL

1.1.1.9.6



US FL

1.1.1.9.7



US GL

1.1.1.9.8



US HL

1.1.1.9.9



US TL

1.1.1.10



US HAseries

1.1.1.11



US HSseries

1.1.2



- US Series with NSK K1
- D Maintenance-Free series

1.1.2.1



- US LH series

1.1.2.1.1



- US LH-AN series

1.1.2.1.2



- US LH-BN series

1.1.2.1.3



- US LH-EL series

1.1.2.1.4



- US LH-GL series

1.1.2.1.5



- US LH-FL series

1.1.2.1.6



- US LH-HL series

1.1.2.1.7



- US LH-AL series

1.1.2.1.8



US LH-BL series

1.1.2.1.9



US LH-EM series

1.1.2.1.10



US LH-GM series

1.1.2.2



US LS series

1.1.2.2.1



US LS-CL series

1.1.2.2.2



US LS-AL series

1.1.2.2.3



US LS-JL series

1.1.2.2.4



US LS-EL series

1.1.2.2.5



US LS-KL series

1.1.2.2.6



US LS-FL series

1.1.2.2.7



US LS-JM series

1.1.2.2.8



US LS-EM series

1.1.2.3



US LW series

1.1.2.4



US LE series

1.1.2.4.1



US LE-AL series

1.1.2.4.2



US LE-TL series

1.1.2.4.3



US LE-AR series

1.1.2.4.4



US LE-TR series

1.1.2.4.5



US LE-BL series

1.1.2.4.6



US LE-UL series

1.1.2.4.7



US LE-CL series

1.1.2.4.8



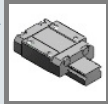
US LE-SL series

1.1.2.5



US LU series

1.1.2.5.1



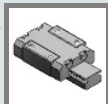
US LU-AL series

1.1.2.5.2



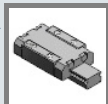
US LU-TL series

1.1.2.5.3



US LU-AR series

1.1.2.5.4



US LU-TR series

1.1.2.5.5



US LU-BL series

1.1.2.5.6



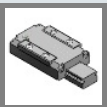
US LU-UL series

1.1.2.6



US PE series

1.1.2.7



US PU series

1.1.2.8



US LA series

1.1.2.8.1



US LA-AL series

1.1.2.8.2



US LA-AN series

1.1.2.8.3



US LA-BL series

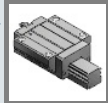
1.1.2.8.4



US LA-BN series

PARTsolutions

1.1.2.8.5



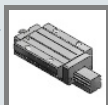
US LA-EL series

1.1.2.8.6



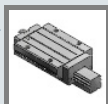
US LA-FL series

1.1.2.8.7



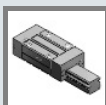
US LA-GL series

1.1.2.8.8



US LA-HL series

1.1.2.9



US LY series

1.1.2.9.1



US AL

1.1.2.9.2



US AN

1.1.2.9.3



US BL

1.1.2.9.4



US BN

1.1.2.9.5



US EL

1.1.2.9.6



US FL

1.1.2.9.7



US GL

1.1.2.9.8



US HL

1.1.2.9.9



US TL

1.1.2.10



US HS series

1.1.2.11



US HAseries

1.2



US Roller guide RAseries

D Roller Guide RAseries

1.2.1



US Standard series

PARTsolutions

1.2.1.1



US AL series

1.2.1.2



US AN series

1.2.1.3



US BL series

1.2.1.4



US BN series

1.2.1.5



US EM series

1.2.1.6



US GM series

1.2.2



US Series with NSK K1
D MF series

1.2.2.1



US AL series

1.2.2.2



US AN series

PARTsolutions

1.2.2.3



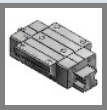
US BL series

1.2.2.4



US BN series

1.2.2.5



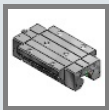
US EM series

1.2.2.6



US GM series

1.2.2.6.1



US Parts

1.3



US Translide

1.4



US Ball Screws
D Standard stock Ball screws

1.4.1



US A series

1.4.1.1



US Dia (4-16)

PARTsolutions

1.4.1.2



US Dia (20-50)

1.4.2



US S series

1.4.2.1



US Dia (4-20)

1.4.2.2



US Dia (25-50)

1.4.3



US V series

1.4.3.1



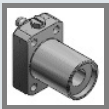
US Dia (6-12)

1.4.4



US BSS series

1.4.4.1



US Dia (10-25)

1.4.4.2



US Dia (32-50)

1.4.5



- US Compact FAseries
- D BSS-FAseries

1.4.6



- US Compact FAfor conveyance

1.4.7



- US Compact FAfor high accuracy

1.5



- US Standard support unit
- D Standard Support Units for Ball screws

1.5.1



- US Support units

1.5.1.1



- US Square

1.5.1.1.1



- US WBK**-01
- D wbk_01

1.5.1.1.2



- US WBK**S-01
- D wbks_01

1.5.1.1.3



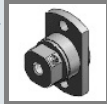
- US WBK**SF-01
- D wbksf_01

1.5.1.2



US Round

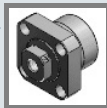
1.5.1.2.1



US WBK**R-11

D wbk_r11

1.5.1.2.2



US WBK**-11

D wbk_11

1.6



US Monocarrier

1.6.1



US MCM type Monocarrier

1.6.1.1



US MCM02

1.6.1.2



US MCM03

1.6.1.3



US MCM05

1.6.1.4



US MCM06

1.6.1.5



US MCM08

1.6.1.6



US MCM10

1.6.2



US MCH type Monocarrier

1.6.2.1



US MCH06

1.6.2.2



US MCH09

1.6.2.3



US MCH10

1.6.2.4



US MCL06

2



US Mechatronic

2.1



US Megatorque motors

2.1.1



US YSB series

2.1.1.1



US YSB2020

2.1.1.2



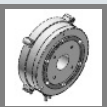
US YSB3040

2.1.1.3



US YSB4080

2.1.1.4



US YSB5120

2.1.2



US JS series

2.1.2.1



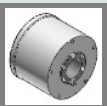
US JS0002

2.1.2.2



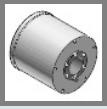
US JS1003

2.1.2.3



US JS2006

2.1.2.4



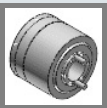
US JS2014

2.1.3



US PS series

2.1.3.1



US Megatorque motors

2.1.3.2



US EDC Type Drive Units

2.1.4



US PN series

2.2



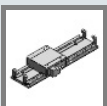
US Megathrust motors

2.2.1



US PM series

2.2.2



US Y series

2.2.2.1



US Resolver feedback type

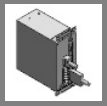
PARTsolutions

2.2.2.2



US Linear feedback type

2.2.2.3



US ESADriver Unit

2.3



US Robot modules

2.3.1



US P series

2.3.1.1



US PM module

2.3.1.2



US PH module

2.3.2



US R series

2.3.2.1



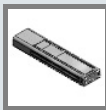
US RS Module

2.3.2.2



US RM Module

2.3.2.3



US RH Module

2.3.2.4



US Clean type RS Module

2.3.2.5



US Clean type RM Module

2.3.2.6



US Clean type RH Module

2.3.3



US Controllers

2.3.4





US Bracket

1  US NSK Linear products

1.1  US NSK Linear Guides

1.1.1  US Standard series

1.1.1.1  US LH series

1.1.1.1.1  US LH-AN series

LH08AN



 LH08AN

LH10AN



 LH10AN

LH12AN



 LH12AN

LH15AN



 LH15AN

LH20AN



 LH20AN

1.1.1.1



US LH series

1.1.1.1.1



US LH-AN series

LH25AN



LH25AN

LH30AN



LH30AN

LH35AN



LH35AN

LH45AN



LH45AN

LH55AN



LH55AN

LH65AN



LH65AN

1.1.1.1.2



US LH-BN series

LH15BN



LH15BN

1.1.1.1



US LH series

1.1.1.1.2



US LH-BN series

LH20BN



LH20BN

LH25BN



LH25BN

LH30BN



LH30BN

LH35BN



LH35BN

LH45BN



LH45BN

LH55BN



LH55BN

LH65BN



LH65BN

1.1.1



US Standard series

1.1.1.1



US LH series

1.1.1.1.3



US LH-EL series

LH15EL



LH15EL

LH20EL



LH20EL

LH25EL



LH25EL

LH30EL



LH30EL

LH35EL



LH35EL

LH45EL



LH45EL

LH55EL



LH55EL

1.1.1.1



US LH series

1.1.1.1.3



US LH-EL series

LH65EL



LH65EL

1.1.1.1.4



US LH-GL series

LH15GL



LH15GL

LH20GL



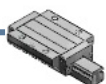
LH20GL

LH25GL



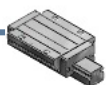
LH25GL

LH30GL



LH30GL

LH35GL



LH35GL

LH45GL



LH45GL

1.1.1.1



US LH series

1.1.1.1.4



US LH-GL series

LH55GL



LH55GL

LH65GL



LH65GL

1.1.1.1.5



US LH-FL series

LH15FL



LH15FL

LH20FL



LH20FL

LH25FL



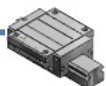
LH25FL

LH30FL



LH30FL

LH35FL



LH35FL

1.1.1.1



US LH series

1.1.1.1.5



US LH-FL series

LH45FL



LH45FL

LH55FL



LH55FL

LH65FL



LH65FL

1.1.1.1.6



US LH-HL series

LH15HL



LH15HL

LH20HL



LH20HL

LH25HL



LH25HL

LH30HL



LH30HL

1.1.1.1



US LH series

1.1.1.1.6



US LH-HL series

LH35HL



LH35HL

LH45HL



LH45HL

LH55HL



LH55HL

LH65HL



LH65HL

1.1.1.1.7



US LH-AL series

LH25AL



LH25AL

LH30AL



LH30AL

LH35AL



LH35AL

1.1.1



US Standard series

1.1.1.1



US LH series

1.1.1.1.8



US LH-BL series

LH25BL



LH25BL

LH30BL



LH30BL

LH35BL



LH35BL

1.1.1.1.9



US LH-EM series

LH15EM



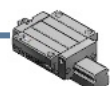
LH15EM

LH20EM



LH20EM

LH25EM



LH25EM

1.1.1.1



US LH series

1.1.1.1.9



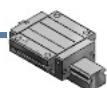
US LH-EM series

LH30EM



LH30EM

LH35EM



LH35EM

LH45EM



LH45EM

LH55EM



LH55EM

LH65EM



LH65EM

1.1.1.1.10



US LH-GM series

LH15GM



LH15GM

LH20GM



LH20GM

1.1.1.1



US LH series

1.1.1.1.10



US LH-GM series

LH25GM



LH25GM

LH30GM



LH30GM

LH35GM



LH35GM

LH45GM



LH45GM

LH55GM



LH55GM

LH65GM



LH65GM

1.1



US NSK Linear Guides

1.1.1



US Standard series

1.1.1.2



US LS series

1.1.1.2.1



US LS-AL series

D LS-AL series/High load type

LS15AL



US LS15AL

LS20AL



US LS20AL

LS25AL



US LS25AL

LS30AL



US LS30AL

LS35AL



US LS35AL

1.1.1



US Standard series

1.1.1.2



US LS series

1.1.1.2.2



US LS-CL series
D LS-CL series/Medium load type

LS15CL



US LS15CL

LS20CL



US LS20CL

LS25CL



US LS25CL

LS30CL



US LS30CL

LS35CL



US LS35CL

1.1.1.2.3



US LS-EL series
D LS-EL series/High load type

LS15EL



US LS15EL

1.1.1.2



US LS series

1.1.1.2.3



US LS-EL series
D LS-EL series/High load type

LS20EL



US LS20EL

LS25EL



US LS25EL

LS30EL



US LS30EL

LS35EL



US LS35EL

1.1.1.2.4



US LS-EM series
D LS-EM series/High load type

LS15EM



US LS15EM

LS20EM



US LS20EM

LS25EM



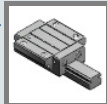
US LS25EM

1.1.1.2



US LS series

1.1.1.2.4



US LS-EM series
D LS-EM series/High load type

LS30EM



US LS30EM

LS35EM



US LS35EM

1.1.1.2.5



US LS-FL series
D LS-FL series/High load type

LS15FL



US LS15FL

LS20FL



US LS20FL

LS25FL



US LS25FL

LS30FL



US LS30FL

LS35FL



US LS35FL

1.1.1



US Standard series

1.1.1.2



US LS series

1.1.1.2.6



US LS-JL series
D LS-JL series/Medium load type

LS15JL



US LS15JL

LS20JL



US LS20JL

LS25JL



US LS25JL

LS30JL



US LS30JL

LS35JL



US LS35JL

1.1.1.2.7



US LS-JM series
D LS-JM series/Medium load type

LS15JM



US LS15JM

1.1.1.2



US LS series

1.1.1.2.7



US LS-JM series
D LS-JM series/Medium load type

LS20JM



US LS20JM

LS25JM



US LS25JM

LS30JM



US LS30JM

LS35JM



US LS35JM

1.1.1.2.8



US LS-KL series
D LS-KL series/Medium load type

LS15KL



US LS15KL

LS20KL



US LS20KL

LS25KL



US LS25KL

1.1.1.2



US LS series

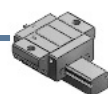
1.1.1.2.8



US LS-KL series

D LS-KL series/Medium load type

LS30KL



US LS30KL

LS35KL



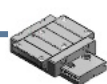
US LS35KL

1.1.1.3



US LW series

LW17EL



LW17EL

LW21EL



LW21EL

LW27EL



LW27EL

LW35EL



LW35EL

LW50EL



LW50EL

1.1



US NSK Linear Guides

1.1.1



US Standard series

1.1.1.4



US LE series

1.1.1.4.1



US LE-AL series

D LE-AL series/Wide rail, miniature

LE05AL



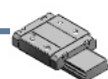
LE05AL

LE09AL



LE09AL

LE12AL



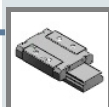
LE12AL

LE15AL



LE15AL

1.1.1.4.2



US LE-TL series

D LE-TL series/Wide rail, miniature, large mounting tap hole

LE07TL



LE07TL

1.1.1.4



US LE series

1.1.1.4.2



US LE-TL series

D LE-TL series/Wide rail, miniature, large mounting tap hole

LE09TL



LE09TL

1.1.1.4.3



US LE-AR series

D LE-AR series/Wide rail, miniature, with ball retainer

LE09AR



LE09AR

LE12AR



LE12AR

LE15AR



LE15AR

1.1.1.4.4



US LE-TR series

D LE-TR series/Wide rail, miniature, large mounting tap hole, with ball retainer

LE09TR



LE09TR

1.1.1



US Standard series

1.1.1.4



US LE series

1.1.1.4.5



US LE-BL series

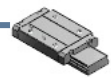
D LE-BL series/High load type, with rail, miniature

LE09BL



LE09BL

LE12BL



LE12BL

LE15BL



LE15BL

1.1.1.4.6



US LE-UL series

D LE-UL series/High load type, with rail, miniature, with large mounting tap hole

LE07UL



LE07UL

LE09UL



LE09UL

1.1.1



US Standard series

1.1.1.4



US LE series

1.1.1.4.7



US LE-CL series
D LE-CL series/High load type, with rail, miniature

LE05CL



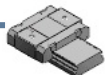
LE05CL

LE09CL



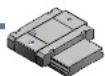
LE09CL

LE12CL



LE12CL

LE15CL



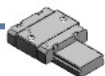
LE15CL

1.1.1.4.8



US LE-SL series
D LE-SL series/High load type, with rail, miniature, with large mounting tap hole

LE07SL



LE07SL

LE09SL



LE09SL

1.1



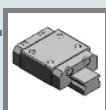
US NSK Linear Guides

1.1.1



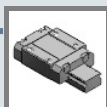
US Standard series

1.1.1.5



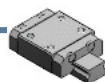
US LU series

1.1.1.5.1



US LU-AL series
D LU-AL series/Miniature

LU07AL



LU07AL

LU09AL



LU09AL

LU12AL



LU12AL

LU15AL



LU15AL

1.1.1.5.2



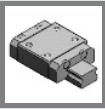
US LU-TL series
D LU-TL series/Miniature, large mounting tap hole

LU05TL



LU05TL

1.1.1.5



US LU series

1.1.1.5.2



US LU-TL series

D LU-TL series/Miniature, large mounting tap hole

LU09TL



LU09TL

LU12TL



LU12TL

1.1.1.5.3



US LU-AR series

D LU-AR series/Miniature, with ball retainer

LU09AR



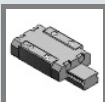
LU09AR

LU12AR



LU12AR

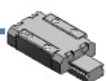
1.1.1.5.4



US LU-TR series

D LU-TR series/Miniature, large mounting tap hole, with a ball retainer

LU09TR



LU09TR

LU12TR



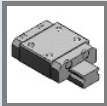
LU12TR

1.1.1



US Standard series

1.1.1.5



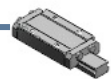
US LU series

1.1.1.5.5



US LU-BL series
D LU-BL series/High load type, miniature

LU09BL



LU09BL

LU12BL



LU12BL

LU15BL



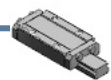
LU15BL

1.1.1.5.6



US LU-UL series
D LU-UL series/High load type, miniature, large mounting hole

LU09UL



LU09UL

LU12UL



LU12UL

1.1



US NSK Linear Guides

1.1.1



US Standard series

1.1.1.6



US PE series

PE05AR



PE05AR

PE07TR



PE07TR

PE09TR



PE09TR

PE09UR



PE09UR

PE12AR



PE12AR

PE12BR



PE12BR

PE15AR



PE15AR

1.1.1



US Standard series

1.1.1.6



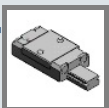
US PE series

PE15BR



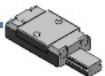
PE15BR

1.1.1.7



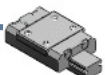
US PU series

PU05TR



PU05TR

PU07AR



PU07AR

PU09TR



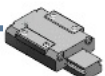
PU09TR

PU09UR



US PU09UR

PU12TR



PU12TR

PU12UR



US PU12UR

1.1.1



US Standard series

1.1.1.7



US PU series

PU15AL



PU15AL

PU15BL



US PU15BL

1.1.1.8



US LA series

1.1.1.8.1



US LA-AL series

D LA-AL series/High load type

LA25AL



LA25AL

LA30AL



LA30AL

LA35AL



LA35AL

LA45AL



LA45AL

1.1.1.8



US LAseries

1.1.1.8.1



US LA-AL series

D LA-AL series/High load type

LA55AL



LA55AL

1.1.1.8.2



US LA-AN series

D LA-AN series/High load type

LA25AN



LA25AN

LA30AN



LA30AN

LA35AN



LA35AN

LA45AN



LA45AN

LA55AN



LA55AN

LA65AN



LA65AN

1.1.1



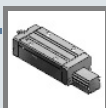
US Standard series

1.1.1.8



US LAseries

1.1.1.8.3



US LA-BL series
D LA-BL series/Super high load type

LA25BL



LA25BL

LA30BL



LA30BL

LA35BL



LA35BL

LA45BL



LA45BL

LA55BL



LA55BL

1.1.1.8.4



US LA-BN series
D LA-BN series/Super high load type

LA25BN



LA25BN

1.1.1.8



US LAseries

1.1.1.8.4



US LA-BN series

D LA-BN series/Super high load type

LA30BN



LA30BN

LA35BN



LA35BN

LA45BN



LA45BN

LA55BN



LA55BN

LA65BN



LA65BN

1.1.1.8.5



US LA-EL series

D LA-EL series/High load type

LA25EL



LA25EL

LA30EL



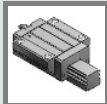
LA30EL

1.1.1.8



US LAseries

1.1.1.8.5



US LA-EL series

D LA-EL series/High load type

LA35EL



LA35EL

LA45EL



LA45EL

LA55EL



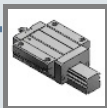
LA55EL

LA65EL



LA65EL

1.1.1.8.6



US LA-FL series

D LA-FL series/High load type

LA25FL



LA25FL

LA30FL



LA30FL

LA35FL



LA35FL

1.1.1.8



US LAseries

1.1.1.8.6



US LA-FL series

D LA-FL series/High load type

LA45FL



LA45FL

LA55FL



LA55FL

LA65FL



LA65FL

1.1.1.8.7



US LA-GL series

D LA-GL series/Super high load type

LA25GL



LA25GL

LA30GL



LA30GL

LA35GL



LA35GL

LA45GL



LA45GL

1.1.1.8



US LAseries

1.1.1.8.7



US LA-GL series

D LA-GL series/Super high load type

LA55GL



LA55GL

LA65GL



LA65GL

1.1.1.8.8



US LA-HL series

D LA-HL series/Super high load type

LA25HL



LA25HL

LA30HL



LA30HL

LA35HL



LA35HL

LA45HL



LA45HL

LA55HL



LA55HL

1.1.1.8



US LA series

1.1.1.8.8



US LA-HL series
D LA-HL series/Super high load type

LA65HL



LA65HL

1.1.1.9



US LY series

1.1.1.9.1



US AL

LY15AL



LY15AL

LY20AL



LY20AL

LY25AL



LY25AL

LY30AL



LY30AL

LY35AL



LY35AL

1.1.1.9



US LY series

1.1.1.9.1



US AL

LY45AL



LY45AL

LY55AL



LY55AL

1.1.1.9.2



US AN

LY15AN



LY15AN

LY25AN



LY25AN

LY30AN



LY30AN

LY35AN



LY35AN

LY45AN



LY45AN

1.1.1.9



US LY series

1.1.1.9.2



US AN

LY55AN



LY55AN

LY65AN



LY65AN

1.1.1.9.3



US BL

LY20BL



LY20BL

LY25BL



LY25BL

LY30BL



LY30BL

LY35BL



LY35BL

LY45BL



LY45BL

1.1.1.9



US LY series

1.1.1.9.3



US BL

LY55BL



LY55BL

1.1.1.9.4



US BN

LY25BN



LY25BN

LY30BN



LY30BN

LY35BN



LY35BN

LY45BN



LY45BN

LY55BN



LY55BN

LY65BN



LY65BN

1.1.1



US Standard series

1.1.1.9



US LY series

1.1.1.9.5



US EL

LY15EL



LY15EL

LY20EL



LY20EL

LY25EL



LY25EL

LY30EL



LY30EL

LY35EL



LY35EL

LY45EL



LY45EL

LY55EL



LY55EL

1.1.1.9



US LY series

1.1.1.9.5



US EL

LY66EL



LY66EL

1.1.1.9.6



US FL

LY15FL



LY15FL

LY20FL



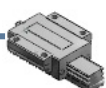
LY20FL

LY25FL



LY25FL

LY30FL



LY30FL

LY35FL



LY35FL

LY45FL



LY45FL

1.1.1.9



US LY series

1.1.1.9.6



US FL

LY55FL



LY55FL

LY65FL



LY65FL

1.1.1.9.7



US GL

LY20GL



LY20GL

LY25GL



LY25GL

LY30GL



LY30GL

LY35GL



LY35GL

LY45GL



LY45GL

1.1.1.9



US LY series

1.1.1.9.7



US GL

LY55GL



LY55GL

LY65GL



LY65GL

1.1.1.9.8



US HL

LY20HL



LY20HL

LY25HL



LY25HL

LY30HL



LY30HL

LY35HL



LY35HL

LY45HL



LY45HL

PARTsolutions

1.1.1.9



US LY series

1.1.1.9.8



US HL

LY55HL



LY55HL

LY65HL



LY65HL

1.1.1.9.9



US TL

LY30TL



LY30TL

1.1.1.10



US HAseries

HA25AN



HA25AN

HA25EM



HA25EM

HA30AN



HA30AN

1.1.1



US Standard series

1.1.1.10



US HAseries

HA30EM



HA30EM

HA35AL



HA35AL

HA35AN



HA35AN

HA35EM



HA35EM

HA45AL



HA45AL

HA45AN



HA45AN

HA45EM



HA45EM

HA55AL



HA55AL

1.1.1



US Standard series

1.1.1.10



US HAseries

HA55AN



HA55AN

HA55EM



HA55EM

1.1.1.11



US HS series

HS15AL



HS15AL

HS15EM



HS15EM

HS20AL



HS20AL

HS20EM



HS20EM

HS25AL



HS25AL

1.1.1



US Standard series

1.1.1.11



US HS series

HS25EM



HS25EM

HS30AL



HS30AL

HS30EM



HS30EM

HS35AL



HS35AL

HS35EM



HS35EM

1



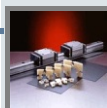
US NSK Linear products

1.1



US NSK Linear Guides

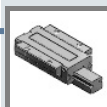
1.1.2



US Series with NSK K1

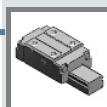
D Maintenance-Free series

1.1.2.1



US LH series

1.1.2.1.1



US LH-AN series

LH08AN K1



LH08AN K1

LH10AN K1



LH10AN K1

LH12AN K1



LH12AN K1

LH15AN K1



LH15AN K1

LH20AN K1



LH20AN K1

1.1.2.1



US LH series

1.1.2.1.1



US LH-AN series

LH25AN K1



LH25AN K1

LH30AN K1



LH30AN K1

LH35AN K1



LH35AN K1

LH45AN K1



LH45AN K1

LH55AN K1



LH55AN K1

LH65AN K1



LH65AN K1

1.1.2.1.2



US LH-BN series

LH15BN K1



LH15BN K1

1.1.2.1



US LH series

1.1.2.1.2



US LH-BN series

LH20BN K1



LH20BN K1

LH25BN K1



LH25BN K1

LH30BN K1



LH30BN K1

LH35BN K1



LH35BN K1

LH45BN K1



LH45BN K1

LH55BN K1



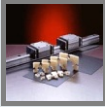
LH55BN K1

LH65BN K1



LH65BN K1

1.1.2



- US Series with NSK K1
- D Maintenance-Free series

1.1.2.1



- US LH series

1.1.2.1.3



- US LH-EL series

LH15EL K1



LH15EL K1

LH20EL K1



LH20EL K1

LH25EL K1



LH25EL K1

LH30EL K1



LH30EL K1

LH35EL K1



LH35EL K1

LH45EL K1



LH45EL K1

LH55EL K1



LH55EL K1

1.1.2.1



US LH series

1.1.2.1.3



US LH-EL series

LH65EL K1



LH65EL K1

1.1.2.1.4



US LH-GL series

LH15GL K1



LH15GL K1

LH20GL K1



LH20GL K1

LH25GL K1



LH25GL K1

LH30GL K1



LH30GL K1

LH35GL K1



LH35GL K1

LH45GL K1



LH45GL K1

1.1.2.1



US LH series

1.1.2.1.4



US LH-GL series

LH55GL K1



LH55GL K1

LH65GL K1



LH65GL K1

1.1.2.1.5



US LH-FL series

LH15FL K1



LH15FL K1

LH20FL K1



LH20FL K1

LH25FL K1



LH25FL K1

LH30FL K1



LH30FL K1

LH35FL K1



LH35FL K1

1.1.2.1



US LH series

1.1.2.1.5



US LH-FL series

LH45FL K1



LH45FL K1

LH55FL K1



LH55FL K1

LH65FL K1



LH65FL K1

1.1.2.1.6



US LH-HL series

LH15HL K1



LH15HL K1

LH20HL K1



LH20HL K1

LH25HL K1



LH25HL K1

LH30HL K1



LH30HL K1

1.1.2.1



US LH series

1.1.2.1.6



US LH-HL series

LH35HL K1



LH35HL K1

LH45HL K1



LH45HL K1

LH55HL K1



LH55HL K1

LH65HL K1



LH65HL K1

1.1.2.1.7



US LH-AL series

LH25AL K1



LH25AL K1

LH30AL K1



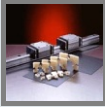
LH30AL K1

LH35AL K1



LH35AL K1

1.1.2



- US Series with NSK K1
- D Maintenance-Free series

1.1.2.1



US LH series

1.1.2.1.8



US LH-BL series

LH25BL K1



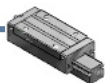
LH25BL K1

LH30BL K1



LH30BL K1

LH35BL K1



LH35BL K1

1.1.2.1.9



US LH-EM series

LH15EM K1



LH15EM K1

LH20EM K1



LH20EM K1

LH25EM K1



LH25EM K1

1.1.2.1



US LH series

1.1.2.1.9



US LH-EM series

LH30EM K1



LH30EM K1

LH35EM K1



LH35EM K1

LH45EM K1



LH45EM K1

LH55EM K1



LH55EM K1

LH65EM K1



LH65EM K1

1.1.2.1.10



US LH-GM series

LH15GM K1



LH15GM K1

LH20GM K1



LH20GM K1

1.1.2.1



US LH series

1.1.2.1.10



US LH-GM series

LH25GM K1



LH25GM K1

LH30GM K1



LH30GM K1

LH35GM K1



LH35GM K1

LH45GM K1



LH45GM K1

LH55GM K1



LH55GM K1

LH65GM K1



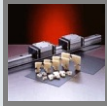
LH65GM K1

1.1



US NSK Linear Guides

1.1.2



US Series with NSK K1

D Maintenance-Free series

1.1.2.2



US LS series

1.1.2.2.1



US LS-CL series

LS15CL-K1



LS15CL-K1

LS20CL-K1



LS20CL-K1

LS25CL-K1



LS25CL-K1

LS30CL-K1



LS30CL-K1

LS35CL-K1



LS35CL-K1

1.1.2



- US Series with NSK K1
- D Maintenance-Free series

1.1.2.2



- US LS series

1.1.2.2.2



- US LS-AL series

LS15AL-K1



- LS15AL-K1

LS20AL-K1



- LS20AL-K1

LS25AL-K1



- LS25AL-K1

LS30AL-K1



- LS30AL-K1

LS35AL-K1



- LS35AL-K1

1.1.2.2.3



- US LS-JL series

LS15JL-K1



- LS15JL-K1

1.1.2.2



US LS series

1.1.2.2.3



US LS-JL series

LS20JL-K1



LS20JL-K1

LS25JL-K1



LS25JL-K1

LS30JL-K1



LS30JL-K1

LS35JL-K1



LS35JL-K1

1.1.2.2.4



US LS-EL series

LS15EL-K1



LS15EL-K1

LS20EL-K1



LS20EL-K1

LS25EL-K1



LS25EL-K1

1.1.2.2



US LS series

1.1.2.2.4



US LS-EL series

LS30EL-K1



LS30EL-K1

LS35EL-K1



LS35EL-K1

1.1.2.2.5



US LS-KL series

LS15KL-K1



LS15KL-K1

LS20KL-K1



LS20KL-K1

LS25KL-K1



LS25KL-K1

LS30KL-K1



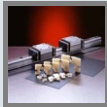
LS30KL-K1

LS35KL-K1



LS35KL-K1

1.1.2



- US Series with NSK K1
- D Maintenance-Free series

1.1.2.2



- US LS series

1.1.2.2.6



- US LS-FL series

LS15FL-K1



- LS15FL-K1

LS20FL-K1



- LS20FL-K1

LS25FL-K1



- LS25FL-K1

LS30FL-K1



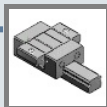
- LS30FL-K1

LS35FL-K1



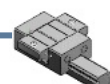
- LS35FL-K1

1.1.2.2.7



- US LS-JM series

LS15JM-K1



- LS15JM-K1

1.1.2.2



US LS series

1.1.2.2.7



US LS-JM series

LS20JM-K1



LS20JM-K1

LS25JM-K1



LS25JM-K1

LS30JM-K1



LS30JM-K1

LS35JM-K1



LS35JM-K1

1.1.2.2.8



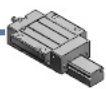
US LS-EM series

LS15EM-K1



LS15EM-K1

LS20EM-K1



LS20EM-K1

LS25EM-K1



LS25EM-K1

PARTsolutions

1.1.2.2



US LS series

1.1.2.2.8



US LS-EM series

LS30EM-K1



LS30EM-K1

LS35EM-K1



LS35EM-K1

1.1.2.3



US LW series

LW17EL-K1



LW17EL-K1

LW21EL-K1



LW21EL-K1

LW27EL-K1



LW27EL-K1

LW35EL-K1



LW35EL-K1

LW50EL-K1



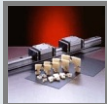
LW50EL-K1

1.1



US NSK Linear Guides

1.1.2



US Series with NSK K1

D Maintenance-Free series

1.1.2.4



US LE series

1.1.2.4.1



US LE-AL series

LE15AL K1



LE15AL K1

1.1.2.4.2



US LE-TL series

LE07TL K1



LE07TL K1

1.1.2.4.3



US LE-AR series

LE09AR K1



LE09AR K1

1.1.2.4



US LE series

1.1.2.4.3



US LE-AR series

LE12AR K1



LE12AR K1

LE15AR K1



LE15AR K1

1.1.2.4.4



US LE-TR series

LE09TR K1



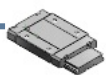
LE09TR K1

1.1.2.4.5



US LE-BL series

LE15BL K1



LE15BL K1

1.1.2.4.6



US LE-UL series

LE07UL K1



LE07UL K1

1.1.2



- US Series with NSK K1
- D Maintenance-Free series

1.1.2.4



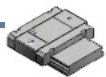
US LE series

1.1.2.4.7



US LE-CL series

LE15CL K1



LE15CL K1

1.1.2.4.8



US LE-SL series

LE07SL K1



LE07SL K1

1.1.2.5



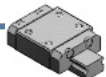
US LU series

1.1.2.5.1



US LU-AL series

LU07AL K1



LU07AL K1

1.1.2.5



US LU series

1.1.2.5.1



US LU-AL series

LU09AL K1



LU09AL K1

LU12AL K1



LU12AL K1

LU15AL K1



LU15AL K1

1.1.2.5.2



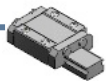
US LU-TL series

LU05TL K1



LU05TL K1

LU09TL K1



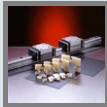
LU09TL K1

LU12TL K1



LU12TL K1

1.1.2



- US Series with NSK K1
- D Maintenance-Free series

1.1.2.5



- US LU series

1.1.2.5.3



- US LU-AR series

LU09AR K1



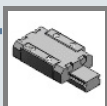
- LU09AR K1

LU12AR K1



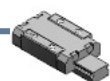
- LU12AR K1

1.1.2.5.4



- US LU-TR series

LU09TR K1



- LU09TR K1

1.1.2.5.5



- US LU-BL series

LU09BL K1



- LU09BL K1

LU12BL K1



- LU12BL K1

1.1.2



- US Series with NSK K1
- D Maintenance-Free series

1.1.2.5



US LU series

1.1.2.5.6



US LU-UL series

LU09UL K1



LU09UL K1

LU12UL K1



LU12UL K1

1.1.2.6



US PE series

PE05AR K1



PE05AR K1

PE07TR K1



PE07TR K1

PE09TR K1



PE09TR K1

PE09UR K1



PE09UR K1

1.1.2



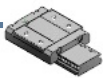
- US Series with NSK K1
- D Maintenance-Free series

1.1.2.6



US PE series

PE12AR K1



PE12AR K1

PE12BR K1



PE12BR K1

PE15AR K1



PE15AR K1

PE15BR K1



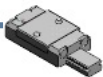
PE15BR K1

1.1.2.7



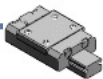
US PU series

PU05TR K1



PU05TR K1

PU07AR K1



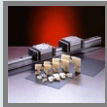
PU07AR K1

PU09TR K1



PU09TR K1

1.1.2



- US Series with NSK K1
- D Maintenance-Free series

1.1.2.7



US PU series

PU09UR K1



PU09UR K1

PU12TR K1



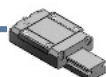
PU12TR K1

PU12UR K1



PU12UR K1

PU15AL K1



PU15AL K1

PU15BL K1



PU15BL K1

1.1.2.8



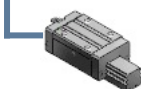
US LAseries

1.1.2.8.1



US LA-AL series

LA25AL K1



LA25AL K1

1.1.2.8



US LAseries

1.1.2.8.1



US LA-AL series

LA30AL K1



LA30AL K1

LA35AL K1



LA35AL K1

LA45AL K1



LA45AL K1

LA55AL K1



LA55AL K1

1.1.2.8.2



US LA-AN series

LA25AN K1



LA25AN K1

LA30AN K1



LA30AN K1

LA35AN K1



LA35AN K1

1.1.2.8



US LAseries

1.1.2.8.2



US LA-AN series

LA45AN K1



LA45AN K1

LA55AN K1



LA55AN K1

LA65AN K1



LA65AN K1

1.1.2.8.3



US LA-BL series

LA25BL K1



LA25BL K1

LA30BL K1



LA30BL K1

LA35BL K1



LA35BL K1

LA45BL K1



LA45BL K1

1.1.2.8



US LAseries

1.1.2.8.3



US LA-BL series

LA55BL K1



LA55BL K1

1.1.2.8.4



US LA-BN series

LA25BN K1



LA25BN K1

LA30BN K1



LA30BN K1

LA35BN K1



LA35BN K1

LA45BN K1



LA45BN K1

LA55BN K1



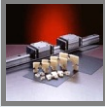
LA55BN K1

LA65BN K1



LA65BN K1

1.1.2



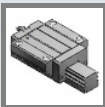
- US Series with NSK K1
- D Maintenance-Free series

1.1.2.8



- US LAseries

1.1.2.8.5



- US LA-EL series

LA25EL K1



LA25EL K1

LA30EL K1



LA30EL K1

LA35EL K1



LA35EL K1

LA45EL K1



LA45EL K1

LA55EL K1



LA55EL K1

LA65EL K1



LA65EL K1

1.1.2



- US Series with NSK K1
- D Maintenance-Free series

1.1.2.8



- US LAseries

1.1.2.8.6



- US LA-FL series

LA25FL K1



LA25FL K1

LA30FL K1



LA30FL K1

LA35FL K1



LA35FL K1

LA45FL K1



LA45FL K1

LA55FL K1



LA55FL K1

LA65FL K1



LA65FL K1

1.1.2



- US Series with NSK K1
- D Maintenance-Free series

1.1.2.8



- US LAseries

1.1.2.8.7



- US LA-GL series

LA25GL K1



LA30GL K1



LA35GL K1



LA45GL K1



LA55GL K1



LE65GL K1



1.1.2



- US Series with NSK K1
- D Maintenance-Free series

1.1.2.8



- US LAseries

1.1.2.8.8



- US LA-HL series

LA25HL K1



LA25HL K1

LA30HL K1



LA30HL K1

LA35HL K1



LA35HL K1

LA45HL K1



LA45HL K1

LA55HL K1



LA55HL K1

LE65HL K1



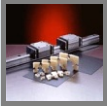
LE65HL K1

1.1



US NSK Linear Guides

1.1.2



US Series with NSK K1

D Maintenance-Free series

1.1.2.9



US LY series

1.1.2.9.1



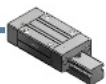
US AL

LY15AL



LY15AL

LY20AL



LY20AL

LY25AL



LY25AL

LY30AL



LY30AL

LY35AL



LY35AL

LY45AL



LY45AL

1.1.2.9



US LY series

1.1.2.9.1



US AL

LY55AL



LY55AL

1.1.2.9.2



US AN

LY15AN



LY15AN

LY25AN



LY25AN

LY30AN



LY30AN

LY35AN



LY35AN

LY45AN



LY45AN

LY55AN



LY55AN

1.1.2.9



US LY series

1.1.2.9.2



US AN

LY65AN



LY65AN

1.1.2.9.3



US BL

LY20BL



LY20BL

LY25BL



LY25BL

LY30BL



LY30BL

LY35BL



LY35BL

LY45BL



LY45BL

LY55BL



LY55BL

1.1.2



- US Series with NSK K1
- D Maintenance-Free series

1.1.2.9



- US LY series

1.1.2.9.4



- US BN

LY25BN



LY25BN

LY30BN



LY30BN

LY35BN



LY35BN

LY45BN



LY45BN

LY55BN



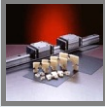
LY55BN

LY65BN



LY65BN

1.1.2



- US Series with NSK K1
- D Maintenance-Free series

1.1.2.9



- US LY series

1.1.2.9.5



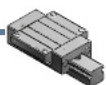
- US EL

LY15EL



LY15EL

LY20EL



LY20EL

LY25EL



LY25EL

LY30EL



LY30EL

LY35EL



LY35EL

LY45EL



LY45EL

LY55EL



LY55EL

1.1.2.9



US LY series

1.1.2.9.5



US EL

LY66EL



LY66EL

1.1.2.9.6



US FL

LY15FL



LY15FL

LY20FL



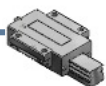
LY20FL

LY25FL



LY25FL

LY30FL



LY30FL

LY35FL



LY35FL

LY45FL



LY45FL

1.1.2.9



US LY series

1.1.2.9.6



US FL

LY55FL



LY55FL

LY65FL



LY65FL

1.1.2.9.7



US GL

LY20GL



LY20GL

LY25GL



LY25GL

LY30GL



LY30GL

LY35GL



LY35GL

LY45GL



LY45GL

1.1.2.9



US LY series

1.1.2.9.7



US GL

LY55GL



LY55GL

LY65GL



LY65GL

1.1.2.9.8



US HL

LY20HL



LY20HL

LY25HL



LY25HL

LY30HL



LY30HL

LY35HL



LY35HL

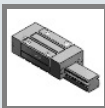
LY45HL



LY45HL

PARTsolutions

1.1.2.9



US LY series

1.1.2.9.8



US HL

LY55HL



LY55HL

LY65HL



LY65HL

1.1.2.9.9



US TL

LY30TL



LY30TL

1.1.2.10



US HS series

HS15AL-K1



HS15AL-K1

HS15EM-K1



HS15EM-K1

HS20AL-K1



HS20AL-K1

1.1.2



- US Series with NSK K1
- D Maintenance-Free series

1.1.2.10



- US HS series

HS20EM-K1



HS20EM-K1

HS25AL-K1



HS25AL-K1

HS25EM-K1



HS25EM-K1

HS30AL-K1



HS30AL-K1

HS30EM-K1



HS30EM-K1

HS35AL-K1



HS35AL-K1

HS35EM-K1



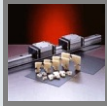
HS35EM-K1

1.1



US NSK Linear Guides

1.1.2



US Series with NSK K1

D Maintenance-Free series

1.1.2.11



US HAseries

HA25AN-K1



HA25AN-K1

HA25EM-K1



HA25EM-K1

HA30AN-K1



HA30AN-K1

HA30EM-K1



HA30EM-K1

HA35AL-K1



HA35AL-K1

HA35AN-K1



HA35AN-K1

HA35EM-K1



HA35EM-K1

1.1.2



- US Series with NSK K1
- D Maintenance-Free series

1.1.2.11



- US HAseries

HA45AL-K1



HA45AL-K1

HA45AN-K1



HA45AN-K1

HA45EM-K1



HA45EM-K1

HA55AL-K1



HA55AL-K1

HA55AN-K1



HA55AN-K1

HA55EM-K1



HA55EM-K1

1



US NSK Linear products

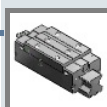
1.2



US Roller guide RAseries

D Roller Guide RAseries

1.2.1



US Standard series

1.2.1.1



US AL series

RA25AL



RA25AL

RA30AL



RA30AL

RA35AL



RA35AL

RA45AL



RA45AL

RA55AL



RA55AL

PARTsolutions

1.2



- US Roller guide RAseries
- D Roller Guide RAseries

1.2.1



- US Standard series

1.2.1.2



- US AN series

RA25AN



RA30AN



RA35AN



RA45AN



RA55AN



RA65AN



1.2



- US Roller guide RAseries
- D Roller Guide RAseries

1.2.1



- US Standard series

1.2.1.3



- US BL series

RA25BL



- RA25BL

RA30BL



- RA30BL

RA35BL



- RA35BL

RA45BL



- RA45BL

RA55BL



- RA55BL

1.2.1.4



- US BN series

RA25BN



- RA25BN

1.2.1



US Standard series

1.2.1.4



US BN series

RA30BN



RA30BN

RA35BN



RA35BN

RA45BN



RA45BN

RA55BN



RA55BN

RA65BN



RA65BN

1.2.1.5



US EM series

RA25EM



RA25EM

RA30EM



RA30EM

PARTsolutions

1.2.1



US Standard series

1.2.1.5



US EM series

RA35EM



RA35EM

RA45EM



RA45EM

RA55EM



RA55EM

RA65EM



RA65EM

1.2.1.6



US GM series

RA25GM



RA25GM

RA30GM



RA30GM

RA35GM



RA35GM

1.2.1



US Standard series

1.2.1.6



US GM series

RA45GM



RA45GM

RA55GM



RA55GM

RA65GM



RA65GM

1.2.2



US Series with NSK K1

D MF series

1.2.2.1



US AL series

RA25AL K1



RA25AL K1

RA30AL K1



RA30AL K1

RA35AL K1



RA35AL K1

1.2.2



- US Series with NSK K1
- D MF series

1.2.2.1



- US AL series

RA45AL K1



RA45AL K1

RA55AL K1



RA55AL K1

1.2.2.2



- US AN series

RA25AN K1



RA25AN K1

RA30AN K1



RA30AN K1

RA35AN K1



RA35AN K1

RA45AN K1



RA45AN K1

RA55AN K1



RA55AN K1

1.2.2



- US Series with NSK K1
- D MF series

1.2.2.2



- US AN series

RA65AN K1



RA65AN K1

1.2.2.3



- US BL series

RA25BL K1



RA25BL K1

RA30BL K1



RA30BL K1

RA35BL K1



RA35BL K1

RA45BL K1



RA45BL K1

RA55BL K1



RA55BL K1

1.2



- US Roller guide RAseries
- D Roller Guide RAseries

1.2.2



- US Series with NSK K1
- D MF series

1.2.2.4



- US BN series

RA25BN K1



RA25BN K1

RA25BN K1



RA25BN K1

RA35BN K1



RA35BN K1

RA45BN K1



RA45BN K1

RA55BN K1



RA55BN K1

RA65BN K1



RA65BN K1

PARTsolutions

1.2



- US Roller guide RAseries
- D Roller Guide RAseries

1.2.2



- US Series with NSK K1
- D MF series

1.2.2.5



- US EM series

RA25EM-K1



RA25EM-K1

RA30EM-K1



RA30EM-K1

RA35EM-K1



RA35EM-K1

RA45EM-K1



RA45EM-K1

RA55EM-K1



RA55EM-K1

RA65EM-K1



RA65EM-K1

1.2



- US Roller guide RAseries
- D Roller Guide RAseries

1.2.2



- US Series with NSK K1
- D MF series

1.2.2.6



- US GM series

1.2.2.6.1



- US Parts

ra_gm_em_k1_asmcfg

- US ra_gm_em_k1_asmcfg

ra_gm_em_k1_asmtpl



- US ra_gm_em_k1_asmtpl

RA_EM_GM_K1_dummy

- US RA_EM_GM_K1_dummy

RA_EM_GM_K1_rail



- US RA_EM_GM_K1_rail

RA_EM_GM_K1_slide



- US RA_EM_GM_K1_slide

RA_EM_GM_K1_slide



- US RA_EM_GM_K1_slide

PARTsolutions

1.2.2



US Series with NSK K1
D MF series

1.2.2.6



US GM series

RA25GM-K1



RA25GM-K1

RA30GM-K1



RA30GM-K1

RA35GM-K1



RA35GM-K1

RA45GM-K1



RA45GM-K1

RA55GM-K1



RA55GM-K1

RA65GM-K1



RA65GM-K1

1.3



US Translide

TS15AN



TS15AN

1



US NSK Linear products

1.3



US Translide

TS20AN



TS20AN

TS25AN



TS25AN

TS30AN



TS30AN

TS35AN



TS35AN

1.4



US Ball Screws

D Standard stock Ball screws

1.4.1



US Aseries

1.4.1.1



US Dia (4-16)

Dia 4, Lead 1



Dia 4, Lead 1

1.4.1



US Aseries

1.4.1.1



US Dia (4-16)

Dia 6, Lead 1



Dia 6, Lead 1

Dia 8, Lead 1



Dia 8, Lead 1

Dia 8, Lead 1.5



Dia 8, Lead 1.5

Dia 8, Lead 2



Dia 8, Lead 2

Dia 10, Lead 2



Dia 10, Lead 2

Dia 10, Lead 2.5



US NSK

Dia 10, Lead 4



Dia 10, Lead 4

Dia 12, Lead 2



Dia 12, Lead 2

1.4.1



US Aseries

1.4.1.1



US Dia (4-16)

Dia 12, Lead 2.5



Dia 12, Lead 2.5

Dia 12, Lead 5



Dia 12, Lead 5

Dia 12, Lead 10



Dia 12, Lead 10

Dia 14, Lead 5



Dia 14, Lead 5

Dia 14, Lead 8



Dia 14, Lead 8

Dia 15, Lead 10



Dia 15, Lead 10

Dia 15, Lead 20



Dia 15, Lead 20

Dia 16, Lead 2



Dia 16, Lead 2

1.4.1



US Aseries

1.4.1.1



US Dia (4-16)

Dia 16, Lead 2.5

Dia 16, Lead 2.5

Dia 16, Lead 5

Dia 16, Lead 5

Dia 16, Lead 16

Dia 16, Lead 16

Dia 16, Lead 32

Dia 16, Lead 32

1.4.1.2



US Dia (20-50)

Dia 20, Lead 4

US NSK

Dia 20, Lead 5

US NSK

Dia 20, Lead 10

US NSK

1.4.1



US Aseries

1.4.1.2



US Dia (20-50)

Dia 20, Lead 20



US NSK

Dia 20, Lead 40



US NSK

Dia 25, Lead 4



US NSK

Dia 25, Lead 5



US NSK

Dia 25, Lead 6



US NSK

Dia 25, Lead 10



US NSK

Dia 25, Lead 20



US NSK

Dia 25, Lead 25



US NSK

1.4.1



US Aseries

1.4.1.2



US Dia (20-50)

Dia 25, Lead 50



US NSK

Dia 28, Lead 5 (PFT)



US NSK

Dia 28, Lead 5 (ZFT)



US NSK

Dia 28, Lead 6 (PFT)



US NSK

Dia 28, Lead 6 (ZFT)



US NSK

Dia 32, Lead 5 (PFT)



US NSK

Dia 32, Lead 5 (ZFT)



US NSK

Dia 32, Lead 6 (PFT)



US NSK

1.4.1



US Aseries

1.4.1.2



US Dia (20-50)

Dia 32, Lead 6 (ZFT)



US NSK

Dia 32, Lead 8



US NSK

Dia 32, Lead 10 (ZFT)



US NSK

Dia 32, Lead 10 (DFT)



US NSK

Dia 32, Lead 25



US NSK

Dia 32, Lead 32



US NSK

Dia 36, Lead 10 (ZFT)



US NSK

Dia 36, Lead 10 (DFT)



US NSK

PARTsolutions

1.4.1



US Aseries

1.4.1.2



US Dia (20-50)

Dia 40, Lead 5



US NSK

Dia 40, Lead 8



US NSK

Dia 40, Lead 10 (ZFT)



US NSK

Dia 40, Lead 10 (DFT)



US NSK

Dia 40, Lead 12 (ZFT)



US NSK

Dia 40, Lead 12 (DFT)



US NSK

Dia 45, Lead 10



US NSK

Dia 50, Lead 10 (ZFT)



US NSK

1.4.1



US Aseries

1.4.1.2



US Dia (20-50)

Dia 50, Lead 10 (ZFT)



US NSK

1.4.2



US Sseries

1.4.2.1



US Dia (4-20)

Dia 4, Lead 1



Dia 4, Lead 1

Dia 6, Lead 1



Dia 6, Lead 1

Dia 8, Lead 1



Dia 8, Lead 1

Dia 8, Lead 1.5



Dia 8, Lead 1.5

Dia 8, Lead 2



Dia 8, Lead 2

1.4.2



US S series

1.4.2.1



US Dia (4-20)

Dia 10, Lead 2



Dia 10, Lead 2

Dia 10, Lead 2.5



Dia 10, Lead 2.5

Dia 12, Lead 2



Dia 12, Lead 2

Dia 12, Lead 2.5



Dia 12, Lead 2.5

Dia 10, Lead 4



Dia 10, Lead 4

Dia 12, Lead 5



Dia 12, Lead 5

Dia 12, Lead 10



Dia 12, Lead 10

Dia 14, Lead 5



Dia 14, Lead 5

1.4.2



US S series

1.4.2.1



US Dia (4-20)

Dia 14, Lead 8



Dia 14, Lead 8

Dia 15, Lead 10



Dia 15, Lead 10

Dia 16, Lead 2



Dia 16, Lead 2

Dia 16, Lead 2.5



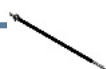
Dia 16, Lead 2.5

Dia 15, Lead 20



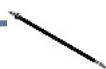
Dia 15, Lead 20

Dia 16, Lead 32



Dia 16, Lead 32

Dia 20, Lead 40



Dia 20, Lead 40

Dia 16, Lead 5



Dia 16, Lead 5

1.4.2



US S series

1.4.2.1



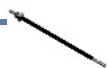
US Dia (4-20)

Dia 16, Lead 16



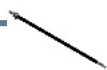
Dia 16, Lead 16

Dia 20, Lead 10



Dia 20, Lead 10

Dia 20, Lead 20



Dia 20, Lead 20

Dia 20, Lead 4



Dia 20, Lead 4

Dia 20, Lead 5



Dia 20, Lead 5

1.4.2.2



US Dia (25-50)

Dia25,Lead4 (PFT)



US Dia25,Lead4 (PFT)

Dia25,Lead5 (PFT)



US Dia25,Lead5 (PFT)

1.4.2



US S series

1.4.2.2



US Dia (25-50)

Dia25,Lead6 (PFT)



US Dia25,Lead6 (PFT)

Dia 25, Lead 5 (ZFD)



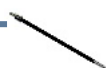
US Dia 25, Lead 5 (ZFD)

Dia 25, Lead 10 (ZFD)



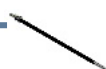
US Dia 25, Lead 10 (ZFD)

Dia 25, Lead 20 (LSFT)



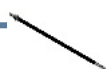
US Dia 25, Lead 20 (LSFT)

Dia 25, Lead 25 (LSFT)



US Dia 25, Lead 25 (LSFT)

Dia 25, Lead 50 (USFC)



US Dia 25, Lead 50 (USFC)

Dia 25,Lead 10 (PFT)



US Dia 25,Lead 10 (PFT)

Dia 28,Lead 5 (PFT)



US Dia 28,Lead 5 (PFT)

1.4.2



US S series

1.4.2.2



US Dia (25-50)

Dia 28, Lead 6 (PFT)



US Dia 28, Lead 6 (PFT)

Dia 28, Lead 5 (ZFT)



US Dia 28, Lead 5 (ZFT)

Dia 28, Lead 6 (ZFT)



US Dia 28, Lead 6 (ZFT)

Dia 32, Lead 5 (PFT)



US Dia 32, Lead 5 (PFT)

Dia 32, Lead 6 (PFT)



US Dia 32, Lead 6 (PFT)

Dia 32, Lead 5 (ZFT)



US Dia 32, Lead 5 (ZFT)

Dia 32, Lead 6 (ZFT)



US Dia 32, Lead 6 (ZFT)

Dia 32, Lead 8 (ZFT)



US Dia 32, Lead 8 (ZFT)

1.4.2



US S series

1.4.2.2



US Dia (25-50)

Dia 32, Lead 5 (ZFD)



US Dia 32, Lead 5 (ZFD)

Dia 32, Lead 10 (ZFD)



US Dia 32, Lead 10 (ZFD)

Dia 32, Lead 10 (ZFT)



US Dia 32, Lead 10 (ZFT)

Dia 36, Lead 10 (ZFT)



US Dia 36, Lead 10 (ZFT)

Dia 40, Lead 5 (ZFT)



US Dia 40, Lead 5 (ZFT)

Dia 32, Lead 10 (DFT)



US Dia 32, Lead 10 (DFT)

Dia 36, Lead 10 (DFT)



US Dia 36, Lead 10 (DFT)

Dia 32, Lead 25 (LSFT)



US Dia 32, Lead 25 (LSFT)

1.4.2



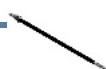
US S series

1.4.2.2



US Dia (25-50)

Dia 32, Lead32 (LSFT)



US Dia 32, Lead32 (LSFT)

Dia 40, Lead 8 (ZFT)



US Dia 40, Lead 8 (ZFT)

Dia 40, Lead 10 (ZFT)



US Dia 40, Lead 10 (ZFT)

Dia 40, Lead 12 (ZFT)



US Dia 40, Lead 12 (ZFT)

Dia 40, Lead 10 (DFT)



US Dia 40, Lead 10 (DFT)

Dia 40, Lead 12 (DFT)



US Dia 40, Lead 12 (DFT)

Dia 40, Lead 10 (ZFD)



US Dia 40, Lead 10 (ZFD)

Dia 50, Lead 10 (ZFD)



US Dia 50, Lead 10 (ZFD)

1.4.2



US S series

1.4.2.2



US Dia (25-50)

Dia 45, Lead10 (ZFT)



US Dia 45, Lead10 (ZFT)

Dia 50, Lead10 (ZFT)



US Dia 50, Lead10 (ZFT)

Dia 50, Lead10 2Z (ZFT)



US Dia 50, Lead10 2Z (ZFT)

1.4.3



US V series

1.4.3.1



US Dia (6-12)

RMADia 10, Lead 2



US RMADia 10, Lead 2

RMADia 12, Lead 2



US RMADia 12, Lead 2

RMADia 6, Lead 1



US RMADia 6, Lead 1

1.4.3



US V series

1.4.3.1



US Dia (6-12)

RMADia 8, Lead 1



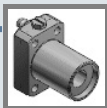
US RMADia 8, Lead 1

RMADia 8, Lead 2



US RMADia 8, Lead 2

1.4.4



US BSS series

1.4.4.1



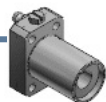
US Dia (10-25)

BSS Dia 10, Lead 5



BSS Dia 10, Lead 5

BSS Dia 10, Lead 10



BSS Dia 10, Lead 10

BSS Dia 12, Lead 5



BSS Dia 12, Lead 5

BSS Dia 12, Lead 10



BSS Dia 12, Lead 10

1.4.4



US BSS series

1.4.4.1



US Dia (10-25)

BSS Dia 12, Lead 20



BSS Dia 12, Lead 20

BSS Dia 12, Lead 30



BSS Dia 12, Lead 30

BSS Dia 15, Lead 5



BSS Dia 15, Lead 5

BSS Dia 15, Lead 10



BSS Dia 15, Lead 10

BSS Dia 15, Lead 20



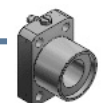
BSS Dia 15, Lead 20

BSS Dia 15, Lead 30



BSS Dia 15, Lead 30

BSS Dia 20, Lead 5



BSS Dia 20, Lead 5

BSS Dia 20, Lead 10



BSS Dia 20, Lead 10

1.4.4



US BSS series

1.4.4.1



US Dia (10-25)

BSS Dia 20, Lead 20



BSS Dia 20, Lead 20

BSS Dia 20, Lead 30



BSS Dia 20, Lead 30

BSS Dia 20, Lead 40



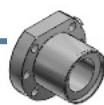
BSS Dia 20, Lead 40

BSS Dia 20, Lead 60



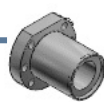
BSS Dia 20, Lead 60

BSS Dia 25, Lead 5



BSS Dia 25, Lead 5

BSS Dia 25, Lead 10



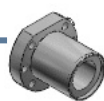
BSS Dia 25, Lead 10

BSS Dia 25, Lead 12



BSS Dia 25, Lead 12

BSS Dia 25, Lead 20



BSS Dia 25, Lead 20

1.4.4



US BSS series

1.4.4.1



US Dia (10-25)

BSS Dia 25, Lead 25



BSS Dia 25, Lead 25

BSS Dia 25, Lead 30



BSS Dia 25, Lead 30

BSS Dia 25, Lead 50



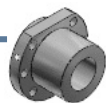
BSS Dia 25, Lead 50

1.4.4.2



US Dia (32-50)

BSS Dia 32, Lead 5



BSS Dia 32, Lead 5

BSS Dia 32, Lead 10



BSS Dia 32, Lead 10

BSS Dia 32, Lead 12



BSS Dia 32, Lead 12

BSS Dia 32, Lead 16



BSS Dia 32, Lead 16

1.4.4



US BSS series

1.4.4.2



US Dia (32-50)

BSS Dia 32, Lead 20



BSS Dia 32, Lead 20

BSS Dia 32, Lead 32



BSS Dia 32, Lead 32

BSS Dia 32, Lead 64



BSS Dia 32, Lead 64

BSS Dia 36, Lead 5



BSS Dia 36, Lead 5

BSS Dia 36, Lead 10



BSS Dia 36, Lead 10

BSS Dia 36, Lead 12



BSS Dia 36, Lead 12

BSS Dia 36, Lead 16



BSS Dia 36, Lead 16

BSS Dia 36, Lead 20



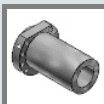
BSS Dia 36, Lead 20

1.4.4



US BSS series

1.4.4.2



US Dia (32-50)

BSS Dia 40, Lead 10



BSS Dia 40, Lead 10

BSS Dia 40, Lead 12



BSS Dia 40, Lead 12

BSS Dia 40, Lead 16



BSS Dia 40, Lead 16

BSS Dia 40, Lead 20



BSS Dia 40, Lead 20

BSS Dia 40, Lead 25



BSS Dia 40, Lead 25

BSS Dia 40, Lead 30



BSS Dia 40, Lead 30

BSS Dia 40, Lead 40



BSS Dia 40, Lead 40

BSS Dia 40, Lead 80



BSS Dia 40, Lead 80

1.4.4



US BSS series

1.4.4.2



US Dia (32-50)

BSS Dia 45, Lead 10



BSS Dia 45, Lead 10

BSS Dia 45, Lead 12



BSS Dia 45, Lead 12

BSS Dia 45, Lead 16



BSS Dia 45, Lead 16

BSS Dia 45, Lead 20



BSS Dia 45, Lead 20

BSS Dia 45, Lead 25



BSS Dia 45, Lead 25

BSS Dia 45, Lead 30



BSS Dia 45, Lead 30

BSS Dia 50, Lead 10



BSS Dia 50, Lead 10

BSS Dia 50, Lead 12



BSS Dia 50, Lead 12

1.4.4



US BSS series

1.4.4.2



US Dia (32-50)

BSS Dia 50, Lead 16



BSS Dia 50, Lead 16

BSS Dia 50, Lead 20



BSS Dia 50, Lead 20

BSS Dia 50, Lead 25



BSS Dia 50, Lead 25

BSS Dia 50, Lead 30



BSS Dia 50, Lead 30

BSS Dia 50, Lead 50



BSS Dia 50, Lead 50

BSS Dia 50, Lead 100



BSS Dia 50, Lead 100

1.4.5



US Compact FAseries

D BSS-FAseries

BSS FADia 10, Lead 10



BSS FADia 10, Lead 10

1.4



- US Ball Screws
- D Standard stock Ball screws

1.4.5



- US Compact FAseries
- D BSS-FAseries

BSS FADia 10, Lead 5

BSS FADia 10, Lead 5



BSS FADia 12, Lead 10

BSS FADia 12, Lead 10



BSS FADia 12, Lead 20

BSS FADia 12, Lead 20



BSS FADia 12, Lead 30

BSS FADia 12, Lead 30



BSS FADia 12, Lead 5

BSS FADia 12, Lead 5



BSS FADia 15, Lead 10

BSS FADia 15, Lead 10



BSS FADia 15, Lead 20

BSS FADia 15, Lead 20



BSS FADia 15, Lead 30

BSS FADia 15, Lead 30



1.4



- US Ball Screws
- D Standard stock Ball screws

1.4.5



- US Compact FAseries
- D BSS-FAseries

BSS FADia 15, Lead 5

BSS FADia 15, Lead 5



BSS FADia 20, Lead 10

BSS FADia 20, Lead 10



BSS FADia 20, Lead 20

BSS FADia 20, Lead 20



BSS FADia 20, Lead 30

BSS FADia 20, Lead 30



BSS FADia 20, Lead 40

BSS FADia 20, Lead 40



BSS FADia 20, Lead 5

BSS FADia 20, Lead 5



BSS FADia 20, Lead 60

BSS FADia 20, Lead 60



BSS FADia 25, Lead 10

BSS FADia 25, Lead 10



1.4



- US Ball Screws
- D Standard stock Ball screws

1.4.5



- US Compact FAseries
- D BSS-FAseries

BSS FADia 25, Lead 20

BSS FADia 25, Lead 20



BSS FADia 25, Lead 25

BSS FADia 25, Lead 25



BSS FADia 25, Lead 30

BSS FADia 25, Lead 30



BSS FADia 25, Lead 50

BSS FADia 25, Lead 50



BSS FADia 25, Lead 5

BSS FADia 25, Lead 5



1.4.6



- US Compact FAfor conveyence

FSS1210N1*

US Compact FADia 12, Lead 10



FSS1510N1*

US Compact FADia 15, Lead 10



1.4



- US Ball Screws
- D Standard stock Ball screws

1.4.6



US Compact FA for conveyance

FSS1520N1*

US Compact FADia 15, Lead 20

FSS2010N1*

US Compact FADia 20, Lead 10

FSS2020N1*

US Compact FADia 20, Lead 20

FSS2510N1*

US Compact FADia 25, Lead 10

FSS2520N1*

US Compact FADia 25, Lead 20

FSS2525N1*

US Compact FADia 25, Lead 25

1.4.7



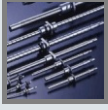
US Compact FA for high accuracy

USS1005N1*

US Compact FADia 10, Lead 5

PARTsolutions

1.4



- US Ball Screws
- D Standard stock Ball screws

1.4.7



- US Compact FA for high accuracy

USS1205N1*



- US Compact FADia 12, Lead 5

USS1505N1*



- US Compact FADia 15, Lead 5

1.5



- US Standard support unit
- D Standard Support Units for Ball screws

1.5.1



- US Support units

1.5.1.1



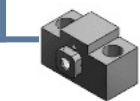
- US Square

1.5.1.1.1



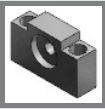
- US WBK**-01
- D wbk_01

WBK06-01A



- WBK06-01A

1.5.1.1



US Square

1.5.1.1.1



US WBK**-01

D wbk_01

WBK08-01A



WBK08-01A

WBK08-01B



WBK08-01B

WBK10-01A



WBK10-01A

WBK10_01B



WBK10_01B

WBK12-01B



WBK12-01B

WBK15-01B



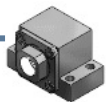
WBK15-01B

WBK20-01



WBK20-01

WBK25-01



WBK25-01

1.5.1.1



US Square

1.5.1.1.1



US WBK**-01

D wbk_01

WBK12-01A



WBK12-01A

WBK15-01A



WBK15-01A

1.5.1.1.2



US WBK**S-01

D wbks_01

WBK08S-01



WBK08S-01

wbk08s_01b



wbk08s_01b

WBK10S-01



WBK10S-01

WBK12S-01



WBK12S-01

wbk12s_01b



wbk12s_01b

1.5.1.1



US Square

1.5.1.1.2



US WBK**S-01

D wbls_01

WBK15S-01



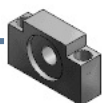
WBK15S-01

wbk15s_01b



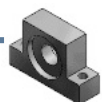
wbk15s_01b

WBK20S-01



WBK20S-01

WBK25S-01



WBK25S-01

1.5.1.1.3



US WBK**SF-01

D wbksf_01

WBK12SF-01



WBK12SF-01

WBK15SF-01



WBK15SF-01

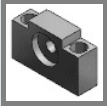
PARTsolutions

1.5



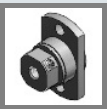
- US Standard support unit
- D Standard Support Units for Ball screws

1.5.1



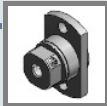
- US Support units

1.5.1.2



- US Round

1.5.1.2.1



- US WBK**R-11
- D wbk_r11

WBK04R-11



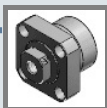
WBK04R-11

WBK06R-11



WBK06R-11

1.5.1.2.2



- US WBK**-11
- D wbk_11

WBK06-11



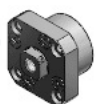
WBK06-11

WBK08-11



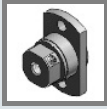
WBK08-11

WBK08-11B



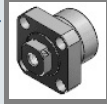
WBK08-11B

1.5.1.2



US Round

1.5.1.2.2



US WBK**-11

D wbk_11

WBK10-11



WBK10-11

WBK12-11



WBK12-11

WBK15-11



WBK15-11

WBK20-11



WBK20-11

WBK25-11



WBK25-11

1



US NSK Linear products

1.6



US Monocarrier

1.6.1



US MCM type Monocarrier

1.6.1.1



US MCM02

Ball screw lead 1 and 2



US Ball screw lead 1 and 2

1.6.1.2



US MCM03

Ball screw lead 1 and 2



Ball screw lead 1 and 2

Ball screw lead 10 and 12



Ball screw lead 10 and 12

1.6



US Monocarrier

1.6.1



US MCM type Monocarrier

1.6.1.3



US MCM05

Single slider specification



Single slider specification

Double slider specification



Double slider specification

1.6.1.4



US MCM06

Single slider specifications



Single slider specifications

Double slider specification



Double slider specification

1.6.1.5



US MCM08

Single slider specification



Single slider specification

1.6.1



US MCM type Monocarrier

1.6.1.5



US MCM08

Double slider specification



Double slider specification

1.6.1.6



US MCM10

Single slider specification



Single slider specification

Double slider specification



Double slider specification

Motor bracket



Motor bracket

1.6.2



US MCH type Monocarrier

1.6.2.1



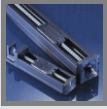
US MCH06

Single slider specification



Single slider specification

1.6.2



US MCH type Monocarrier

1.6.2.1



US MCH06

Double slider specification



Double slider specification

1.6.2.2



US MCH09

Single slider specification



Single slider specification

Double slider specification



Double slider specification

1.6.2.3



US MCH10

Single slider specification



Single slider specification

Double slider specification



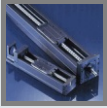
Double slider specification

1.6



US Monocarrier

1.6.2



US MCH type Monocarrier

1.6.2.4



US MCL06

Single slider specification



Single slider specification

2



US Mechatronic

2.1



US Megatorque motors

2.1.1



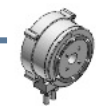
US YSB series

2.1.1.1



US YSB2020

Megatorque motors



Megatorque motors

2.1.1



US YSB series

2.1.1.1



US YSB2020

Megatorque motors with brake



Megatorque motors with brake

ESB Type Drive Units



ESB Type Drive Units

2.1.1.2



US YSB3040

Megatorque motors



Megatorque motors

Megatorque motors with brake



Megatorque motors with brake

ESB Type Drive Units



ESB Type Drive Units

2.1.1.3



US YSB4080

Megatorque motors



Megatorque motors

2.1.1



US YSB series

2.1.1.3



US YSB4080

Megatorque motors with brake



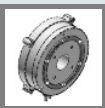
Megatorque motors with brake

ESB Type Drive Units



ESB Type Drive Units

2.1.1.4



US YSB5120

Megatorque motors



Megatorque motors

Megatorque motors with brake



Megatorque motors with brake

ESB Type Drive Units



ESB Type Drive Units

2



US Mechatronic

2.1



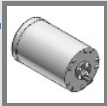
US Megatorque motors

2.1.2



US JS series

2.1.2.1



US JS0002

Megatorque motors Standard



Megatorque motors Standard

Megatorque motors CE Marking



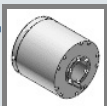
Megatorque motors CE Marking

ESA Type Drive Units



ESA Type Drive Units

2.1.2.2



US JS1003

Megatorque motors Standard



Megatorque motors Standard

Megatorque motors CE Marking



Megatorque motors CE Marking

2.1.2



US JS series

2.1.2.2



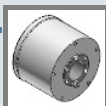
US JS1003

ESAType Drive Units



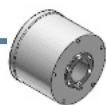
ESAType Drive Units

2.1.2.3



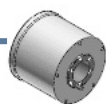
US JS2006

Megatorque motors Standard



Megatorque motors Standard

Megatorque motors CE Marking



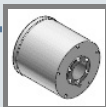
Megatorque motors CE Marking

ESAType Drive Units



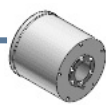
ESAType Drive Units

2.1.2.4



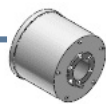
US JS2014

Megatorque motors Standard



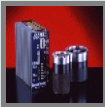
Megatorque motors Standard

Megatorque motors CE Marking



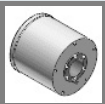
Megatorque motors CE Marking

2.1.2



US JS series

2.1.2.4



US JS2014

ESAType Drive Units



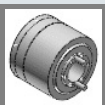
ESAType Drive Units

2.1.3



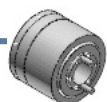
US PS series

2.1.3.1



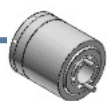
US Megatorque motors

PS 1006



PS 1006

PS 1012



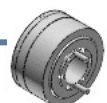
PS 1012

PS 1018



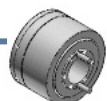
PS 1018

PS 3015



PS 3015

PS 3030



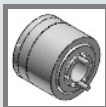
PS 3030

2.1.3



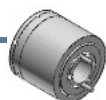
US PS series

2.1.3.1



US Megatorque motors

PS 3060



PS 3060

PS 3090



PS 3090

2.1.3.2



US EDC Type Drive Units

PS 1006 - EDC Type Drive Units



PS 1006 - EDC Type Drive Units

PS 1012 - EDC Type Drive Units



PS 1012 - EDC Type Drive Units

PS 1018 - EDC Type Drive Units



PS 1018 - EDC Type Drive Units

PS 3015 - EDC Type Drive Units



PS 3015 - EDC Type Drive Units

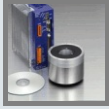
PS 3030 - EDC Type Drive Units



PS 3030 - EDC Type Drive Units

PARTsolutions

2.1.3



US PS series

2.1.3.2



US EDC Type Drive Units

PS 3060 - EDC Type Drive Units



PS 3060 - EDC Type Drive Units

PS 3090 - EDC Type Drive Units



PS 3090 - EDC Type Drive Units

2.1.4



US PN series

PN



US Motor

PN



US EDC Driver Unit

2.2



US Megathrust motors

2.2.1



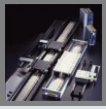
US PM series

PD1



PD1

2.2



US Megathrust motors

2.2.1



US PM series

PD2



PD2

PD3



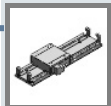
PD3

EDB Driver Unit



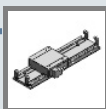
EDB Driver Unit

2.2.2



US Y series

2.2.2.1



US Resolver feedback type

YZ1 Resolver feedback type



YZ1 Resolver feedback type

YA1 Resolver feedback type



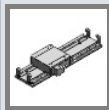
YA1 Resolver feedback type

YA2 Resolver feedback type



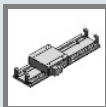
YA2 Resolver feedback type

2.2.2



US Y series

2.2.2.1



US Resolver feedback type

YB1 Resolver feedback type



YB1 Resolver feedback type

YB2 Resolver feedback type



YB2 Resolver feedback type

YB3 Resolver feedback type



YB3 Resolver feedback type

2.2.2.2



US Linear feedback type

YZ1 Linear feedback type



YZ1 Linear feedback type

YA1 Linear feedback type



YA1 Linear feedback type

YA2 Linear feedback type



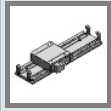
YA2 Linear feedback type

YB1 Linear feedback type



YB1 Linear feedback type

2.2.2



US Y series

2.2.2.2



US Linear feedbacktype

YB2 Linear feedbacktype



YB2 Linear feedbacktype

YB3 Linear feedbacktype



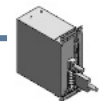
YB3 Linear feedbacktype

2.2.2.3



US ESADriver Unit

ESADriver Unit



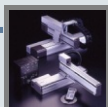
ESADriver Unit

2



US Mechatronic

2.3



US Robot modules

2.3.1



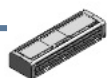
US P series

2.3.1.1



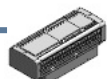
US PM module

Normal type



Normal type

Back motor mount position type



Back motor mount position type

2.3.1.2



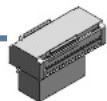
US PH module

Normal type



Normal type

Back motor mount position type



Back motor mount position type

2



US Mechatronic

2.3



US Robot modules

2.3.2



US R series

2.3.2.1



US RS Module

Right motor mount position type



Right motor mount position type

Left motor mount position type



Left motor mount position type

2.3.2.2



US RM Module

Normal type



Normal type

Right motor mount position type



Right motor mount position type

Left motor mount position type



Left motor mount position type

2.3



US Robot modules

2.3.2



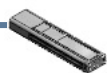
US R series

2.3.2.3



US RH Module

Normal type



Normal type

Right motor mount position type



Right motor mount position type

Left motor mount position type



Left motor mount position type

2.3.2.4



US Clean type RS Module

Right motor mount position type



Right motor mount position type

Left motor mount position type



Left motor mount position type

2.3



US Robot modules

2.3.2



US R series

2.3.2.5



US Clean type RM Module

Normal type



Normal type

Right motor mount position type



Right motor mount position type

Left motor mount position type



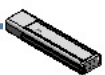
Left motor mount position type

2.3.2.6



US Clean type RH Module

Normal type



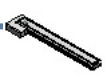
Normal type

Right motor mount position type



Right motor mount position type

Left motor mount position type



Left motor mount position type

2



US Mechatronic

2.3



US Robot modules

2.3.3



US Controllers

Controllers



Controllers

2.3.4



US Bracket

For P series



For P series

For R series



For R series

Copyright



copyright

Copyright

Inhalt des CAD-Kataloges in PARTsolutions



Inhalt des CAD-Kataloges in PARTsolutions