

## 英制 Inch Size

### 螺柄滾輪型

Stud type track rollers

英制六角孔\_偏心型

With hexagonal socket-eccentric collar

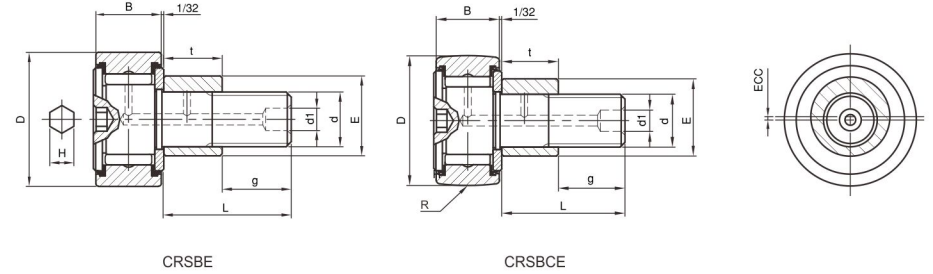


CRSBE  
CRSBCE

滾輪外徑 Outer ring diameter		偏心環外徑 Eccentric collar outside diameter		軸承型號 Series 1/16 inch 帶密封環 With seals		單位重 Weight	尺寸 Dimensions		
D		E		圓筒外輪 Cylindrical outer ring	球面外輪 Crowned outer ring R		B	R	L
0 -0.001 inch	0 -0.025 mm	±0.001 inch	±0.025 mm			g	inch 0 <sup>-0.13</sup> mm	inch mm	inch mm
1/2	12.700	1/4	6.350	CRSBE 8-1	CRSBCE 8-1	20	3/8 9.525	7 180	5/8 15.875
5/8	15.875	3/8	9.525	CRSBE 10-1	CRSBCE 10-1	25	7/16 11.112	8 200	3/4 19.050
3/4	19.050	1/2	12.700	CRSBE 12	CRSBCE 12	35	1/2 12.700	10 250	7/8 22.225
7/8	22.225	1/2	12.700	CRSBE 14	CRSBCE 14	45	1/2 12.700	10 250	7/8 22.225
1	25.400	5/8	15.875	CRSBE 16	CRSBCE 16	90	5/8 15.875	12 300	1 25.400
1 1/8	28.575	5/8	15.875	CRSBE 18	CRSBCE 18	95	5/8 15.875	12 300	1 25.400
1 1/4	31.750	11/16	17.462	CRSBE 20	CRSBCE 20	150	3/4 19.050	14 360	1 1/4 31.750
1 3/8	34.925	11/16	17.462	CRSBE 22	CRSBCE 22	165	3/4 19.050	14 360	1 1/4 31.750
1 1/2	38.100	7/8	22.225	CRSBE 24	CRSBCE 24	260	7/8 22.225	20 500	1 1/2 38.100
1 5/8	41.275	7/8	22.225	CRSBE 26	CRSBCE 26	295	7/8 22.225	20 500	1 1/2 38.100
1 3/4	44.450	1	25.400	CRSBE 28	CRSBCE 28	405	1 25.400	20 500	1 3/4 44.450

(1)當使用機油潤滑時，極限回轉速為表列數值的130%。  
With oil lubrication, 130% of the values given in the tables are permissible.

(2)帶密封環油脂潤滑的極限為表列數值的60%。  
With grease lubrication, 60% of the value given in the tables are permissible for sealed executions.



尺寸 Dimensions						基本額定負荷 Basic load ratings		最大 工作荷重 Working load Max.	極限 回轉速 Limited Speed
d Thread	g	d1	ECC	t	H	動 Dynamic C lbf	靜 Static Co lbf	lbf	油脂潤滑 Grease rpm(1)
inch	mm	mm	mm	0 <sup>-0.01</sup> inch 0 <sup>-0.25</sup> mm	inch	kgf	kgf	kgf	
10-32UNF	1/4	—	0.01	3/8	1/8	1100	1170	350	13000
	6.350	—	0.25	9.525		500	530	160	
1/4-28UNF	5/16	—	0.015	7/16	1/8	1590	1940	600	10000
	7.938	—	0.38	11.112		720	880	270	
3/8-24UNF	3/8	3/16	0.015	1/2	3/16	2090	3150	1320	7500
	9.525	4.762	0.38	12.700		950	1430	600	
3/8-24UNF	3/8	3/16	0.015	1/2	3/16	2090	3150	1320	7500
	9.525	4.762	0.38	12.700		950	1430	600	
7/16-20UNF	1/2	3/16	0.03	1/2	1/4	3130	4760	1810	6000
	12.700	4.762	0.76	12.700		1420	2160	820	
7/16-20UNF	1/2	3/16	0.03	1/2	1/4	3130	4760	1810	6000
	12.700	4.762	0.76	12.700		1420	2160	820	
1/2-20UNF	5/8	3/16	0.03	5/8	1/4	4540	8400	2360	4500
	15.875	4.762	0.76	15.875		2060	3810	1070	
1/2-20UNF	5/8	3/16	0.03	5/8	1/4	4540	8400	2360	4500
	15.875	4.762	0.76	15.875		2060	3810	1070	
5/8-18UNF	3/4	3/16	0.03	3/4	5/16	6020	10300	3700	4000
	19.050	4.762	0.76	19.050		2730	4670	1680	
5/8-18UNF	3/4	3/16	0.03	3/4	5/16	6020	10300	3700	4000
	19.050	4.762	0.76	19.050		2730	4670	1680	
3/4-16UNF	7/8	3/16	0.03	7/8	5/16	8970	14400	5310	3400
	22.225	4.762	0.76	22.225		4070	6530	2410	

(3)1Kgf=9.807 N=2.205 lbf 1lbf=0.454 Kgf=4.448 N

英制 Inch Size

螺柄滾輪型

Stud type track rollers

英制六角孔\_偏心型

With hexagonal socket-eccentric collar

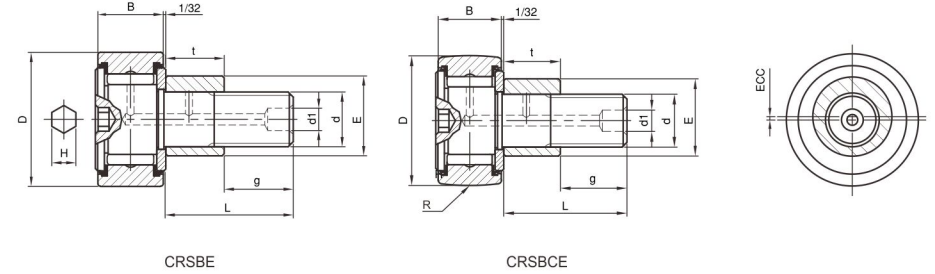


CRSBE  
CRSBCE

滾輪外徑 Outer ring diameter		偏心環外徑 Eccentric collar outside diameter		軸承型號 Series 1/16 inch 帶密封環 With seals		單位重 Weight	尺寸 Dimensions		
D	E	圓筒外輪 Cylindrical outer ring	球面外輪 Crowned outer ring R	g	B		R	L	
0 -0.001 inch	0 -0.025 mm				±0.001 inch	±0.025 mm	inch	inch	inch
1 7/8	47.625	1	25.400	CRSBE 30	CRSBCE 30	460	1 25.400	20 500	1 3/4 44.450
2	50.800	1 3/16	30.162	CRSBE 32	CRSBCE 32	645	1 1/4 31.750	24 600	2 50.800
2 1/4	57.150	1 3/16	30.162	CRSBE 36	CRSBCE 36	775	1 1/4 31.750	24 600	2 50.800
2 1/2	63.500	1 3/8	34.925	CRSBE 40	CRSBCE 40	1170	1 1/2 38.100	30 760	2 1/4 57.150
2 3/4	69.850	1 3/8	34.925	CRSBE 44	CRSBCE 44	1365	1 1/2 38.100	30 760	2 1/4 57.150
3	76.200	1 3/4	44.450	CRSBE 48	CRSBCE 48	1950	1 3/4 44.450	30 760	2 1/2 63.500
3 1/4	82.550	1 3/4	44.450	CRSBE 52	CRSBCE 52	2230	1 3/4 44.450	30 760	2 1/2 63.500
3 1/2	88.900	1 13/16	46.038	CRSBE 56	CRSBCE 56	3240	2 50.800	30 760	2 3/4 69.850
4	101.600	2	50.800	CRSBE 64	CRSBCE 64	4960	2 1/4 57.150	30 760	3 1/2 88.900

(1)當使用機油潤滑時，極限回轉速為表列數值的130%。  
With oil lubrication, 130% of the values given in the tables are permissible.

(2)帶密封環油脂潤滑的極限為表列數值的60%。  
With grease lubrication, 60% of the value given in the tables are permissible for sealed executions.



尺寸 Dimensions						基本額定負荷 Basic load ratings		最大 工作荷重 Working load Max.	極限 回轉速 Limited Speed
d Thread	g	d1	ECC	t	H	動 Dynamic C lbf	靜 Static Co lbf	lbf	油脂潤滑 Grease rpm(1)
inch	inch mm	inch mm	inch mm	0 0 -0.01 -0.25 inch mm	inch	kgf	kgf	kgf	
3/4-16UNF	7/8	3/16	0.03	7/8	5/16	8970	14400	5310	3400
	22.225	4.762	0.76	22.225		4070	6530	2410	
7/8-14UNF	1	3/16	0.03	1	7/16	11500	20500	7230	2600
	25.400	4.762	0.76	25.400		5220	9300	3280	
7/8-14UNF	1	3/16	0.03	1	7/16	11500	20500	7230	2600
	25.400	4.762	0.76	25.400		5220	9300	3280	
1-14UNS	1 1/8	3/16	0.03	1 1/8	1/2	13500	26800	9460	2400
	28.575	4.762	0.76	28.575		6120	12200	4290	
1-14UNS	1 1/8	3/16	0.03	1 1/8	1/2	13500	26800	9460	2400
	28.575	4.762	0.76	28.575		6120	12200	4290	
1 1/4-12UNF	1 1/4	1/4	0.06	1 1/4	5/8	18500	43900	14800	2200
	31.750	6.350	1.52	31.750		8390	19900	6710	
1 1/4-12UNF	1 1/4	1/4	0.06	1 1/4	5/8	18500	43900	14800	2200
	31.750	6.350	1.52	31.750		8390	19900	6710	
1 3/8-12UNF	1 3/8	1/4	0.06	1 3/8	5/8	23400	56400	17900	2000
	34.925	6.350	1.52	34.925		10600	25600	8120	
1 1/2-12UNF	1 1/2	1/4	0.06	2	3/4	28700	68400	21300	1700
	38.100	6.350	1.52	50.800		13000	31000	9660	

(3)1Kgf=9.807 N=2.205 lbf 1lbf=0.454 Kgf=4.448 N

英制 Inch Size

螺柄滾輪型

Stud type track rollers

英制六角孔\_偏心型

With hexagonal socket-eccentric collar

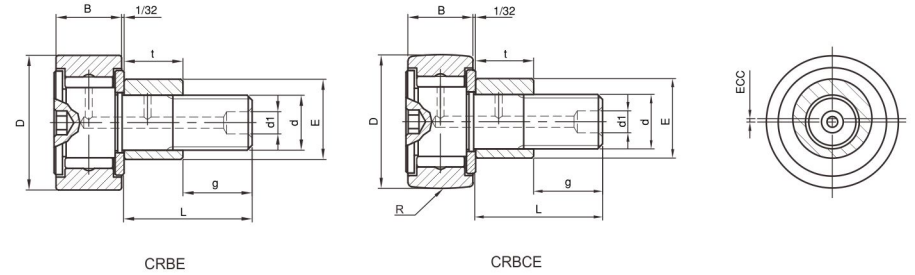


CRBE  
CRBCE

滾輪外徑 Outer ring diameter		偏心環外徑 Eccentric collar outside diameter		軸承型號 Series 1/16 inch 無密封環 Without seals		單位重 Weight	尺寸 Dimensions		
D	E	圓筒外輪 Cylindrical outer ring	球面外輪 Crowned outer ring R	g	B		R	L	
0 -0.001 inch	0 ±0.001 inch	±0.001 inch	±0.025 mm		g	inch 0 <sup>-0.13</sup> mm	inch mm	inch mm	
1/2	12.700	1/4	6.350	CRBE 8-1	CRBCE 8-1	20	3/8 9.525	7 177.8	5/8 15.875
5/8	15.875	3/8	9.525	CRBE 10-1	CRBCE 10-1	25	7/16 11.112	8 177.8	3/4 19.050
3/4	19.050	1/2	12.700	CRBE 12	CRBCE 12	45	1/2 12.700	10 254	7/8 22.225
7/8	22.225	1/2	12.700	CRBE 14	CRBCE 14	60	1/2 12.700	10 254	7/8 22.225
1	25.400	5/8	15.875	CRBE 16	CRBCE 16	105	5/8 15.875	12 304.8	1 25.400
1 1/8	28.575	5/8	15.875	CRBE 18	CRBCE 18	125	5/8 15.875	12 304.8	1 25.400
1 1/4	31.750	11/16	17.462	CRBE 20	CRBCE 20	190	3/4 19.050	14 355.6	1 1/4 31.750
1 3/8	34.925	11/16	17.462	CRBE 22	CRBCE 22	220	3/4 19.050	14 355.6	1 1/4 31.750
1 1/2	38.100	7/8	22.225	CRBE 24	CRBCE 24	335	7/8 22.225	20 508	1 1/2 38.100
1 5/8	41.275	7/8	22.225	CRBE 26	CRBCE 26	360	7/8 22.225	20 508	1 1/2 38.100
1 3/4	44.450	1	25.400	CRBE 28	CRBCE 28	480	1 25.400	20 508	1 3/4 44.450

(1)當使用機油潤滑時，極限回轉速為表列數值的130%。  
With oil lubrication, 130% of the values given in the tables are permissible.

(2)帶密封環油脂潤滑的極限為表列數值的60%。  
With grease lubrication, 60% of the value given in the tables are permissible for sealed executions.



尺寸 Dimensions						基本額定負荷 Basic load ratings		最大 工作荷重 Working load Max.	極限 回轉速 Limited Speed
d Thread	g	d1	ECC	t	H	動 Dynamic C lbf	靜 Static Co lbf	lbf	油脂潤滑 Grease rpm(1)
inch	inch mm	inch mm	inch mm	0 <sup>-0.01</sup> inch 0 <sup>-0.25</sup> mm	inch	kgf	kgf	kgf	
10-32UNF	1/4	—	0.01	3/8	1/8	1100	1170	350	13000
	6.350	—	0.254	9.525		500	530	160	
1/4-28UNF	5/16	—	0.015	7/16	1/8	1590	1940	600	10000
	7.938	—	0.381	11.112		720	880	270	
3/8-24UNF	3/8	3/16	0.015	1/2	3/16	2090	3150	1320	7500
	9.525	4.762	0.381	12.700		950	1430	600	
3/8-24UNF	3/8	3/16	0.015	1/2	3/16	2090	3150	1320	7500
	9.525	4.762	0.381	12.700		950	1430	600	
7/16-20UNF	1/2	3/16	0.03	1/2	1/4	3130	4760	1810	6000
	12.700	4.762	0.762	12.700		1420	2160	820	
7/16-20UNF	1/2	3/16	0.03	1/2	1/4	3130	4760	1810	6000
	12.700	4.762	0.762	12.700		1420	2160	820	
1/2-20UNF	5/8	3/16	0.03	5/8	1/4	4540	8400	2360	4500
	15.875	4.762	0.762	15.875		2060	3810	1070	
1/2-20UNF	5/8	3/16	0.03	5/8	1/4	4540	8400	2360	4500
	15.875	4.762	0.762	15.875		2060	3810	1070	
5/8-18UNF	3/4	3/16	0.03	3/4	5/16	6020	10300	3700	4000
	19.050	4.762	0.762	19.050		2730	4670	1680	
5/8-18UNF	3/4	3/16	0.03	3/4	5/16	6020	10300	3700	4000
	19.050	4.762	0.762	19.050		2730	4670	1680	
3/4-16UNF	7/8	3/16	0.03	7/8	5/16	8970	14400	5310	3400
	22.225	4.762	0.762	22.225		4070	6530	2410	

(3)1Kgf=9.807 N=2.205 lbf 1lbf=0.454 Kgf=4.448 N

(4)此系列產品，需經濟批量訂購生產  
This series are produced by order.

英制 Inch Size

螺柄滾輪型

Stud type track rollers

英制六角孔\_偏心型

With hexagonal socket-  
eccentric collar

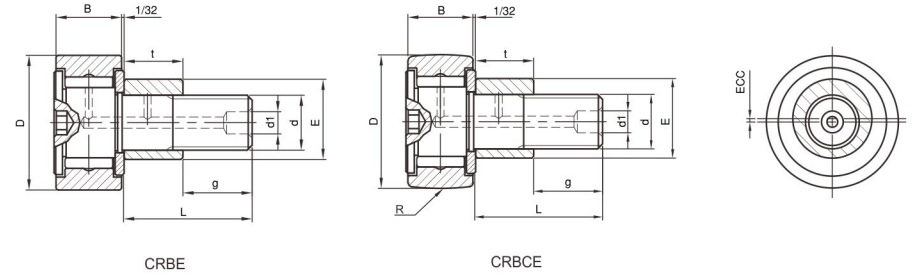


CRBE  
CRBCE

滾輪外徑 Outer ring diameter		偏心環外徑 Eccentric collar outside diameter		軸承型號 Series 1/16 inch 無密封環 Without seals		單位重 Weight	尺寸 Dimensions		
D		E		圓筒外輪 Cylindrical outer ring	球面外輪 Crowned outer ring R		g	B	R
0 -0.001 inch	0 -0.025 mm	±0.001 inch	±0.025 mm			inch		mm	inch
1 7/8	47.625	1	25.400	CRBE 30	CRBCE 30	550	1 25.400	20 508	1 3/4 44.450
2	50.800	1 3/16	30.163	CRBE 32	CRBCE 32	740	1 1/4 31.750	24 609.6	2 50.800
2 1/4	57.150	1 3/16	30.163	CRBE 36	CRBCE 36	890	1 1/4 31.750	24 609.6	2 50.800
2 1/2	63.500	1 3/8	34.925	CRBE 40	CRBCE 40	1280	1 1/2 38.100	30 762	2 1/4 57.150
2 3/4	69.850	1 3/8	34.925	CRBE 44	CRBCE 44	1485	1 1/2 38.100	30 762	2 1/4 57.150
3	76.200	1 3/4	44.450	CRBE 48	CRBCE 48	2115	1 3/4 44.450	30 762	2 1/2 63.500
3 1/4	82.550	1 3/4	44.450	CRBE 52	CRBCE 52	2400	1 3/4 44.450	30 762	2 1/2 63.500
3 1/2	88.900	1 13/16	46.038	CRBE 56	CRBCE 56	3240	2 50.800	30 762	2 3/4 69.850
4	101.600	2	50.800	CRBE 64	CRBCE 64	4960	2 1/4 57.150	30 762	3 1/2 88.900

(1)當使用機油潤滑時，極限回轉速為表列數值的130%。  
With oil lubrication, 130% of the values given in the tables are permissible.

(2)帶密封環油脂潤滑的極限為表列數值的60%。  
With grease lubrication, 60% of the value given in the tables are permissible for sealed executions.



尺寸 Dimensions						基本額定負荷 Basic load ratings		最大 工作荷重 Working load Max.	極限 回轉速 Limited Speed
d Thread	g	d1	ECC	t	H	動 Dynamic C lbf	靜 Static Co lbf	lbf	油脂潤滑 Grease rpm(1)
inch	mm	mm	mm	0 -0.01 inch 0 -0.25 mm	inch	kgf	kgf	kgf	
3/4-16UNF	7/8	3/16	0.03	7/8	5/16	8970	14400	5310	3400
	22.225	4.762	0.762	22.225		4070	6530	2410	
7/8-14UNF	1	3/16	0.03	1	7/16	11500	20500	7230	2600
	25.400	4.762	0.762	25.400		5220	9300	3280	
7/8-14UNF	1	3/16	0.03	1	7/16	11500	20500	7230	2600
	25.400	4.762	0.762	25.400		5220	9300	3280	
1-14UNS	1 1/8	3/16	0.03	1 1/8	1/2	13500	26800	9460	2400
	28.575	4.762	0.762	28.575		6120	12200	4290	
1-14UNS	1 1/8	3/16	0.03	1 1/8	1/2	13500	26800	9460	2400
	28.575	4.762	0.762	28.575		6120	12200	4290	
1 1/4-12UNF	1 1/4	1/4	0.06	1 1/4	5/8	18500	43900	14800	2200
	31.750	6.350	1.524	31.750		8390	19900	6710	
1 1/4-12UNF	1 1/4	1/4	0.06	1 1/4	5/8	18500	43900	14800	2200
	31.750	6.350	1.524	31.750		8390	19900	6710	
1 3/8-12UNF	1 3/8	1/4	0.06	1 3/8	5/8	23400	56400	17900	2000
	34.925	6.350	1.524	34.925		10600	25600	8120	
1 1/2-12UNF	1 1/2	1/4	0.06	2	3/4	28700	68400	21300	1700
	38.100	6.350	1.524	50.800		13000	31000	9660	

(3)1Kgf=9.807 N=2.205 lbf 1lbf=0.454 Kgf=4.448 N

(4)此系列產品，需經濟批量訂購生產  
This series are produced by order.