

英制 Inch Size

螺柄滾輪型

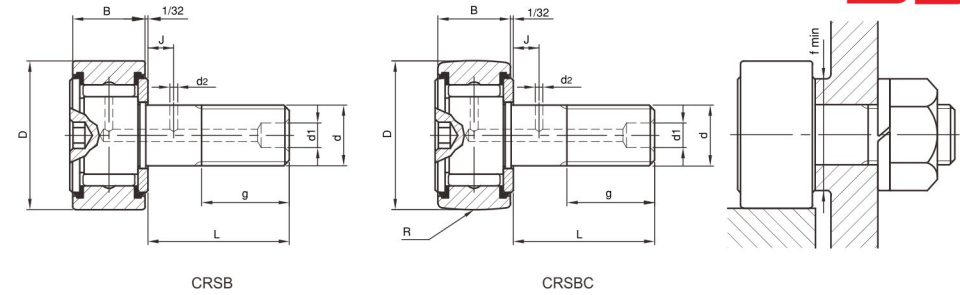
Stud type track rollers

英制六角孔\_滿針型

With hexagonal socket-  
full complement



CRSB  
CRSBC



滾輪外徑 Outer ring diameter		軸承型號 Series 1/16 inch 帶密封環 With seals		單位重 Weight	尺寸 Dimensions					
D	0	圓筒外輪 Cylindrical outer ring	球面外輪 Crowned outer ring R	g	d		B		R	L
-0.001 inch	-0.025 mm				+0.001 0 inch	+0.025 0 mm	0 -0.005 inch	0 -0.13 mm	inch mm	inch mm
1/2	12.700	CRSB 8	CRSBC 8	20	15/79	4.826	11/32	8.731	6 150	1/2 12.700
1/2	12.700	CRSB 8-1	CRSBC 8-1	20	15/79	4.826	3/8	9.525	7 180	5/8 15.875
5/8	15.875	CRSB 10	CRSBC 10	25	1/4	6.350	13/32	10.319	7 180	5/8 15.875
5/8	15.875	CRSB 10-1	CRSBC 10-1	25	1/4	6.350	7/16	11.112	8 200	3/4 19.050
3/4	19.050	CRSB 12	CRSBC 12	35	3/8	9.525	1/2	12.700	10 250	7/8 22.225
7/8	22.225	CRSB 14	CRSBC 14	45	3/8	9.525	1/2	12.700	10 250	7/8 22.225
1	25.400	CRSB 16	CRSBC 16	90	7/16	11.112	5/8	15.875	12 300	1 25.400
1 1/8	28.575	CRSB 18	CRSBC 18	95	7/16	11.112	5/8	15.875	12 300	1 25.400
1 1/4	31.750	CRSB 20	CRSBC 20	150	1/2	12.700	3/4	19.050	14 360	1 1/4 31.750
1 3/8	34.925	CRSB 22	CRSBC 22	165	1/2	12.700	3/4	19.050	14 360	1 1/4 31.750
1 1/2	38.100	CRSB 24	CRSBC 24	260	5/8	15.875	7/8	22.225	20 500	1 1/2 38.100

(1)當使用機油潤滑時，極限回轉速為表列數值的130%。  
With oil lubrication, 130% of the values given in the tables are permissible.

(2)帶密封環油脂潤滑的極限為表列數值的60%。  
With grease lubrication, 60% of the value given in the tables are permissible for sealed executions.

尺寸 Dimensions							基本額定負荷 Basic load ratings		最大 容許荷重 Working load Max.	極限 回轉速 Limited Speed
d Thread	g	d1	d2	J	H	f	動 Dynamic C lbf	靜 Static Co lbf	lbf	油脂潤滑 Grease rpm(1)
inch	inch mm	inch mm	inch mm	inch mm	inch	inch mm	kgf	kgf	kgf	
10-32UNF	1/4 6.350	— —	— —	— —	1/8	21/64 8.334	1100 500	1170 530	350 160	13000
10-32UNF	1/4 6.350	— —	— —	— —	1/8	21/64 8.334	1100 500	1170 530	350 160	13000
1/4-28UNF	5/16 7.938	— —	— —	— —	1/8	29/64 11.509	1590 720	1940 880	600 270	10000
1/4-28UNF	5/16 7.938	— —	— —	— —	1/8	29/64 11.509	1590 720	1940 880	600 270	10000
3/8-24UNF	3/8 9.525	3/16 4.762	3/32 2.381	1/4 6.350	3/16	17/32 13.494	2090 950	3150 1430	1320 600	7500
3/8-24UNF	3/8 9.525	3/16 4.762	3/32 2.381	1/4 6.350	3/16	19/32 15.081	2090 950	3150 1430	1320 600	7500
7/16-20UNF	1/2 12.700	3/16 4.762	3/32 2.381	1/4 6.350	1/4	45/64 17.859	3130 1420	4760 2160	1810 820	6000
7/16-20UNF	1/2 12.700	3/16 4.762	3/32 2.381	1/4 6.350	1/4	3/4 19.050	3130 1420	4760 2160	1810 820	6000
1/2-20UNF	5/8 15.875	3/16 4.762	3/32 2.381	5/16 7.938	1/4	55/64 21.828	4540 2060	8400 3810	2360 1070	4500
1/2-20UNF	5/8 15.875	3/16 4.762	3/32 2.381	5/16 7.938	1/4	55/64 21.828	4540 2060	8400 3810	2360 1070	4500
5/8-18UNF	3/4 19.050	3/16 4.762	3/32 2.381	3/8 9.525	5/16	1 3/64 26.590	6020 2730	10300 4670	3700 1680	4000

(3)1Kgf=9.807 N=2.205 lbf 1lbf=0.454 Kgf=4.448 N

英制 Inch Size

螺柄滾輪型

Stud type track rollers

英制六角孔\_滿針型

With hexagonal socket-  
full complement

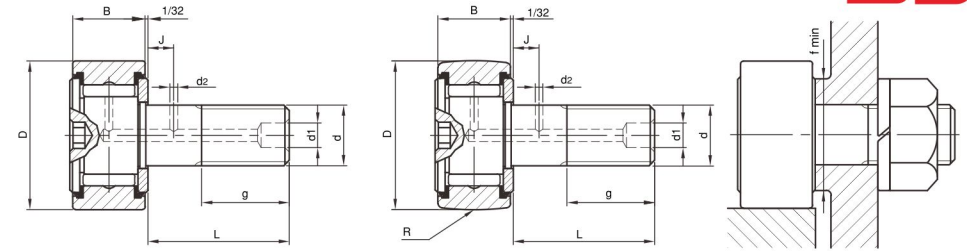


CRSB  
CRSBC

滾輪外徑 Outer ring diameter		軸承型號 Series 1/16 inch 帶密封環 With seals		單位重 Weight	尺寸 Dimensions					
D 0 -0.001 inch	0 -0.025 mm	圓筒外輪 Cylindrical outer ring	球面外輪 Crowned outer ring R	g	d		B		R	L
					+0.001 0 inch	+0.025 0 mm	0 -0.005 inch	0 -0.13 mm		
1 5/8	41.275	CRSB 26	CRSBC 26	295	5/8	15.875	7/8	22.225	20	1 1/2
									500	38.100
1 3/4	44.450	CRSB 28	CRSBC 28	405	3/4	19.050	1	25.400	20	1 3/4
									500	44.450
1 7/8	47.625	CRSB 30	CRSBC 30	460	3/4	19.050	1	25.400	20	1 3/4
									500	44.450
2	50.800	CRSB 32	CRSBC 32	645	7/8	22.225	1 1/4	31.750	24	2
									600	50.800
2 1/4	57.150	CRSB 36	CRSBC 36	775	7/8	22.225	1 1/4	31.750	24	2
									600	50.800
2 1/2	63.500	CRSB 40	CRSBC 40	1170	1	25.400	1 1/2	38.100	30	2 1/4
									760	57.150
2 3/4	69.850	CRSB 44	CRSBC 44	1365	1	25.400	1 1/2	38.100	30	2 1/4
									760	57.150
3	76.200	CRSB 48	CRSBC 48	1950	1 1/4	31.750	1 3/4	44.450	30	2 1/2
									760	63.500
3 1/4	82.550	CRSB 52	CRSBC 52	2230	1 1/4	31.750	1 3/4	44.450	30	2 1/2
									760	63.500
3 1/2	88.900	CRSB 56	CRSBC 56	3240	1 3/8	34.925	2	50.800	30	2 3/4
									760	69.850
4	101.600	CRSB 64	CRSBC 64	4960	1 1/2	38.100	2 1/4	57.150	30	3 1/2
									760	88.900

(1)當使用機油潤滑時，極限回轉速為表列數值的130%。  
With oil lubrication, 130% of the values given in the tables are permissible.

(2)帶密封環油脂潤滑的極限為表列數值的60%。  
With grease lubrication, 60% of the value given in the tables are permissible for sealed executions.



CRSB

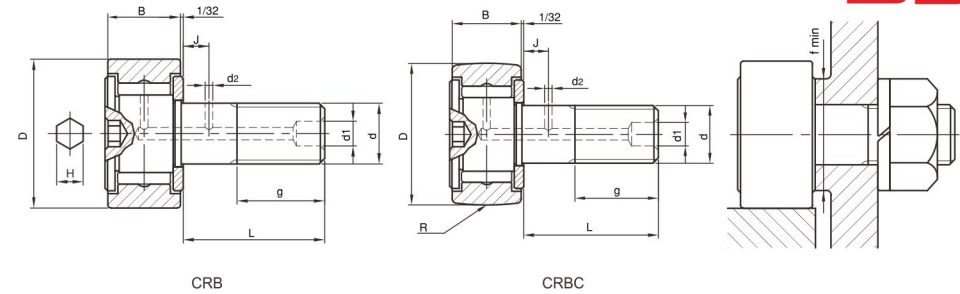
CRSBC

尺寸 Dimensions							基本額定負荷 Basic load ratings		最大 容許荷重 Working load Max.	極限 回轉速 Limited Speed
d Thread	g	d1	d2	J	H	f	動 Dynamic	靜 Static	lbf	rpm(1)
							C	Co		
inch	inch	inch	inch	inch	inch	inch	kgf	kgf	kgf	
5/8-18UNF	3/4	3/16	3/32	3/8	5/16	57/64	6020	10300	3700	4000
	19.050	4.762	2.381	9.525		22.621	2730	4670	1680	
3/4-16UNF	7/8	3/16	3/32	7/16	5/16	1 3/64	8970	14400	5310	3400
	22.225	4.762	2.381	11.112		26.590	4070	6530	2410	
3/4-16UNF	7/8	3/16	3/32	7/16	5/16	1 3/64	8970	14400	5310	3400
	22.225	4.762	2.381	11.112		26.590	4070	6530	2410	
7/8-14UNF	1	3/16	3/32	1/2	7/16	1 13/64	11500	20500	7230	2600
	25.400	4.762	2.381	12.700		30.559	5220	9300	3280	
7/8-14UNF	1	3/16	3/32	1/2	7/16	1 13/64	11500	20500	7230	2600
	25.400	4.762	2.381	12.700		30.559	5220	9300	3280	
1-14UNS	1 1/8	3/16	1/8	9/16	1/2	1 5/16	13500	26800	9460	2400
	28.575	4.762	3.175	14.288		33.338	6120	12200	4290	
1-14UNS	1 1/8	3/16	1/8	9/16	1/2	1 5/16	13500	26800	9460	2400
	28.575	4.762	3.175	14.288		33.338	6120	12200	4290	
1 1/4-12UNF	1 1/4	1/4	1/8	5/8	5/8	1 3/4	18500	43900	14800	2200
	31.750	6.350	3.175	15.875		44.45	8390	19900	6710	
1 1/4-12UNF	1 1/4	1/4	1/8	5/8	5/8	1 3/4	18500	43900	14800	2200
	31.750	6.350	3.175	15.875		44.45	8390	19900	6710	
1 3/8-12UNF	1 3/8	1/4	1/8	11/16	5/8	1 59/64	23400	56400	17900	2000
	34.925	6.350	3.175	17.462		48.816	10600	25600	8120	
1 1/2-12UNF	1 1/2	1/4	1/8	3/4	3/4	2 9/32	28700	68400	21300	1700
	38.100	6.350	3.175	19.050		57.944	13000	31000	9660	

(3)1Kgf=9.807 N=2.205 lbf 1lbf=0.454 Kgf=4.448 N

## 螺柄滾輪型

Stud type track rollers

英制六角孔滿針型  
With hexagonal socket-  
full complementCRB  
CRBC

滾輪外徑 Outer ring diameter		軸承型號 Series 1/16 inch 無密封環 Without seals		單位重 Weight	尺寸 Dimensions						
D	0	圓筒外輪 Cylindrical outer ring	球面外輪 Crowned outer ring R		g	d		B		R	L
-0.001	-0.025				+0.001	+0.025	0	0			
inch	mm				inch	mm	inch	mm	inch	mm	inch
1/2	12.700	CRB 8	CRBC 8	20	15/79	4.826	11/32	8.731	6	1/2	
									150	12.700	
1/2	12.700	CRB 8-1	CRBC 8-1	20	15/79	4.826	3/8	9.525	7	5/8	
									180	15.875	
5/8	15.875	CRB 10	CRBC 10	25	1/4	6.350	13/32	10.319	7	5/8	
									180	15.875	
5/8	15.875	CRB 10-1	CRBC 10-1	25	1/4	6.350	7/16	11.112	8	3/4	
									200	19.050	
3/4	19.050	CRB 12	CRBC 12	35	3/8	9.525	1/2	12.700	10	7/8	
									250	22.225	
7/8	22.225	CRB 14	CRBC 14	45	3/8	9.525	1/2	12.700	10	7/8	
									250	22.225	
1	25.400	CRB 16	CRBC 16	90	7/16	11.112	5/8	15.875	12	1	
									300	25.400	
1 1/8	28.575	CRB 18	CRBC 18	95	7/16	11.112	5/8	15.875	12	1	
									300	25.400	
1 1/4	31.750	CRB 20	CRBC 20	150	1/2	12.700	3/4	19.050	14	1 1/4	
									360	31.750	
1 3/8	34.925	CRB 22	CRBC 22	165	1/2	12.700	3/4	19.050	14	1 1/4	
									360	31.750	
1 1/2	38.100	CRB 24	CRBC 24	260	5/8	15.875	7/8	22.225	20	1 1/2	
									500	38.100	

(1)當使用機油潤滑時，極限回轉速為表列數值的130%。

With oil lubrication, 130% of the values given in the tables are permissible.

(2)帶密封環油脂潤滑的極限為表列數值的60%。

With grease lubrication, 60% of the value given in the tables are permissible for sealed executions.

尺寸 Dimensions							基本額定負荷 Basic load ratings		最大 容許荷重 Working load Max.	極限 回轉速 Limited Speed
d Thread	g	d1	d2	J	H	f	動 Dynamic C lbf	靜 Static Co lbf	lbf	油脂潤滑 Grease rpm(1)
inch	inch mm	inch mm	inch mm	inch mm	inch	inch mm	kgf	kgf	kgf	rpm(1)
10-32UNF	1/4	—	—	—	1/8	21/64	1100	1170	350	13000
	6.350	—	—	—		8.334	500	530	160	
10-32UNF	1/4	—	—	—	1/8	21/64	1100	1170	350	13000
	6.350	—	—	—		8.334	500	530	160	
1/4-28UNF	5/16	—	—	—	1/8	29/64	1590	1940	600	10000
	7.938	—	—	—		11.509	720	880	270	
1/4-28UNF	5/16	—	—	—	1/8	29/64	1590	1940	600	10000
	7.938	—	—	—		11.509	720	880	270	
3/8-24UNF	3/8	3/16	3/32	1/4	3/16	17/32	2090	3150	1320	7500
	9.525	4.762	2.381	6.350		13.494	950	1430	600	
3/8-24UNF	3/8	3/16	3/32	1/4	3/16	19/32	2090	3150	1320	7500
	9.525	4.762	2.381	6.350		15.081	950	1430	600	
7/16-20UNF	1/2	3/16	3/32	1/4	1/4	45/64	3130	4760	1810	6000
	12.700	4.762	2.381	6.350		17.859	1420	2160	820	
7/16-20UNF	1/2	3/16	3/32	1/4	1/4	3/4	3130	4760	1810	6000
	12.700	4.762	2.381	6.350		19.050	1420	2160	820	
1/2-20UNF	5/8	3/16	3/32	5/16	1/4	55/64	4540	8400	2360	4500
	15.875	4.762	2.381	7.938		21.828	2060	3810	1070	
1/2-20UNF	5/8	3/16	3/32	5/16	1/4	55/64	4540	8400	2360	4500
	15.875	4.762	2.381	7.938		21.828	2060	3810	1070	
5/8-18UNF	3/4	3/16	3/32	3/8	5/16	1 3/64	6020	10300	3700	4000
	19.050	4.762	2.381	9.525		26.590	2730	4670	1680	

(3)1Kgf=9.807 N=2.205 lbf 1lbf=0.454 Kgf=4.448 N

(4)此系列產品，需經濟批量訂購生產  
This series are produced by order.

## 英制 Inch Size

### 螺柄滾輪型

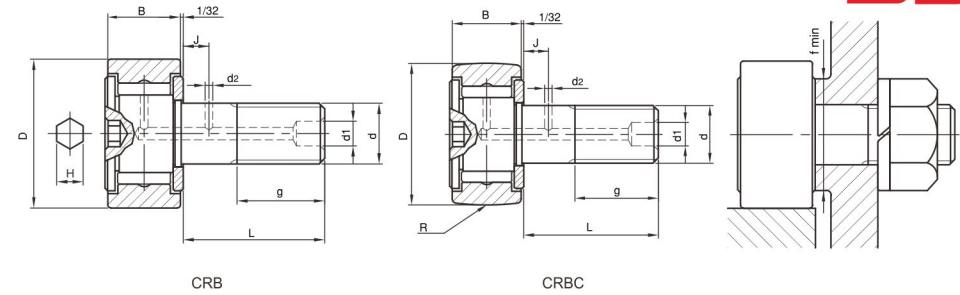
Stud type track rollers

英制六角孔滿針型

With hexagonal socket-full complement



CRB  
CRBC



滾輪外徑 Outer ring diameter		軸承型號 Series 1/16 inch 無密封環 Without seals		單位重 Weight	尺寸 Dimensions					
D		圓筒外輪 Cylindrical outer ring	球面外輪 Crowned outer ring R	g	d		B		R	L
0 -0.001 inch	0 -0.025 mm				+0.001 0 inch	+0.025 0 mm	0 -0.005 inch	0 -0.13 mm	inch mm	inch mm
<b>1 5/8</b>	<b>41.275</b>	<b>CRB 26</b>	<b>CRBC 26</b>	295	5/8	15.875	7/8	22.225	20 500	1 1/2 38.100
<b>1 3/4</b>	<b>44.450</b>	<b>CRB 28</b>	<b>CRBC 28</b>	405	3/4	19.050	1	25.400	20 500	1 3/4 44.450
<b>1 7/8</b>	<b>47.625</b>	<b>CRB 30</b>	<b>CRBC 30</b>	460	3/4	19.050	1	25.400	20 500	1 3/4 44.450
<b>2</b>	<b>50.800</b>	<b>CRB 32</b>	<b>CRBC 32</b>	645	7/8	22.225	1 1/4	31.750	24 600	2 50.800
<b>2 1/4</b>	<b>57.150</b>	<b>CRB 36</b>	<b>CRBC 36</b>	775	7/8	22.225	1 1/4	31.750	24 600	2 50.800
<b>2 1/2</b>	<b>63.500</b>	<b>CRB 40</b>	<b>CRBC 40</b>	1170	1	25.400	1 1/2	38.100	30 760	2 1/4 57.150
<b>2 3/4</b>	<b>69.850</b>	<b>CRB 44</b>	<b>CRBC 44</b>	1365	1	25.400	1 1/2	38.100	30 760	2 1/4 57.150
<b>3</b>	<b>76.200</b>	<b>CRB 48</b>	<b>CRBC 48</b>	1950	1 1/4	31.750	1 3/4	44.450	30 760	2 1/2 63.500
<b>3 1/4</b>	<b>82.550</b>	<b>CRB 52</b>	<b>CRBC 52</b>	2230	1 1/4	31.750	1 3/4	44.450	30 760	2 1/2 63.500
<b>3 1/2</b>	<b>88.900</b>	<b>CRB 56</b>	<b>CRBC 56</b>	3240	1 3/8	34.925	2	50.800	30 760	2 3/4 69.850
<b>4</b>	<b>101.600</b>	<b>CRB 64</b>	<b>CRBC 64</b>	4960	1 1/2	38.100	2 1/4	57.150	30 760	3 1/2 88.900

(1)當使用機油潤滑時，極限回轉速為表列數值的130%。  
With oil lubrication, 130% of the values given in the tables are permissible.

(2)帶密封環油脂潤滑的極限為表列數值的60%。  
With grease lubrication, 60% of the value given in the tables are permissible for sealed executions.

尺寸 Dimensions							基本額定負荷 Basic load ratings		最大 容許荷重 Working load Max.	極限 回轉速 Limited Speed
d Thread	g	d1	d2	J	H	f	動 Dynamic C lbf	靜 Static Co lbf	lbf	油脂潤滑 Grease rpm(1)
inch	inch mm	inch mm	inch mm	inch mm	inch	inch mm	kgf	kgf	kgf	
5/8-18UNF	3/4	3/16	3/32	3/8	5/16	57/64	6020	10300	3700	4000
	19.050	4.762	2.381	9.525		22.622	2730	4670	1680	
3/4-16UNF	7/8	3/16	3/32	7/16	5/16	1 3/64	8970	14400	5310	3400
	22.225	4.762	2.381	11.112		26.590	4070	6530	2410	
3/4-16UNF	7/8	3/16	3/32	7/16	5/16	1 3/64	8970	14400	5310	3400
	22.225	4.762	2.381	11.112		26.590	4070	6530	2410	
7/8-14UNF	1	3/16	3/32	1/2	7/16	1 13/64	11500	20500	7230	2600
	25.400	4.762	2.381	12.700		30.559	5220	9300	3280	
7/8-14UNF	1	3/16	3/32	1/2	7/16	1 13/64	11500	20500	7230	2600
	25.400	4.762	2.381	12.700		30.559	5220	9300	3280	
1-14UNS	1 1/8	3/16	1/8	9/16	1/2	1 5/16	13500	26800	9460	2400
	28.575	4.762	3.175	14.288		33.338	6120	12200	4290	
1-14UNS	1 1/8	3/16	1/8	9/16	1/2	1 5/16	13500	26800	9460	2400
	28.575	4.762	3.175	14.288		33.338	6120	12200	4290	
1 1/4-12UNF	1 1/4	1/4	1/8	5/8	5/8	1 3/4	18500	43900	14800	2200
	31.750	6.350	3.175	15.875		44.45	8390	19900	6710	
1 1/4-12UNF	1 1/4	1/4	1/8	5/8	5/8	1 3/4	18500	43900	14800	2200
	31.750	6.350	3.175	15.875		44.45	8390	19900	6710	
1 3/8-12UNF	1 3/8	1/4	1/8	11/16	5/8	1 59/64	23400	56400	17900	2000
	34.925	6.350	3.175	17.462		48.816	10600	25600	8120	
1 1/2-12UNF	1 1/2	1/4	1/8	3/4	3/4	2 9/32	28700	68400	21300	1700
	38.100	6.350	3.175	19.050		57.944	13000	31000	9660	

(3)1Kgf=9.807 N=2.205 lbf 1lbf=0.454 Kgf=4.448 N

(4)此系列產品，需經濟批量訂購生產  
This series are produced by order.