

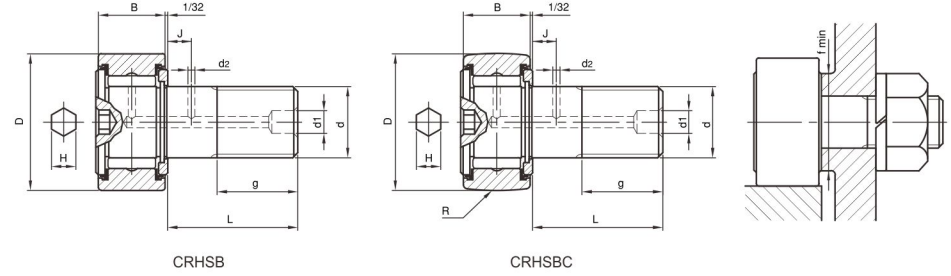
英制 Inch Size

螺柄滾輪型

Stud type track rollers

英制六角孔_重荷型
With hexagonal socket-
heavy duty

CRHSB
CRHSBC



滾輪外徑 Outer ring diameter		軸承型號 Series 1/16 inch 帶密封環 With seals		單位重 Weight g	尺寸 Dimensions			
0 -0.001 inch	0 -0.025 mm	圓筒外輪 Cylindrical outer ring	球面外輪 Crowned outer ring R		d ±0.001 inch ±0.025 mm	B inch 0 ^{-0.13} mm	R inch mm	L inch mm
1/2	12.700	CRHSB 8-1	CRHSBC 8-1	20	1/4 6.350	3/8 9.530	7 177.8	5/8 15.875
5/8	15.875	CRHSB 10-1	CRHSBC 10-1	25	5/16 7.938	7/16 11.112	8 203.2	3/4 19.050
3/4	19.050	CRHSB 12	CRHSBC 12	45	7/16 11.112	1/2 12.700	10 254	7/8 22.225
7/8	22.225	CRHSB 14	CRHSBC 14	60	7/16 11.112	1/2 12.700	10 254	7/8 22.225
1	25.400	CRHSB 16	CRHSBC 16	105	5/8 15.875	5/8 15.875	12 304.8	1 25.400
1 1/8	28.575	CRHSB 18	CRHSBC 18	125	5/8 15.875	5/8 15.875	12 304.8	1 25.400
1 1/4	31.750	CRHSB 20	CRHSBC 20	190	3/4 19.050	3/4 19.050	14 355.6	1 1/4 31.750
1 3/8	34.925	CRHSB 22	CRHSBC 22	220	3/4 19.050	3/4 19.050	14 355.6	1 1/4 31.750
1 1/2	38.100	CRHSB 24	CRHSBC 24	335	7/8 22.225	7/8 22.230	20 508	1 1/2 38.100
1 5/8	41.275	CRHSB 26	CRHSBC 26	360	7/8 22.225	7/8 22.230	20 508	1 1/2 38.100
1 3/4	44.450	CRHSB 28	CRHSBC 28	480	1 25.400	1 25.400	20 508	1 3/4 44.450

(1)當使用機油潤滑時，極限回轉速為表列數值的130%。
With oil lubrication, 130% of the values given in the tables are permissible.

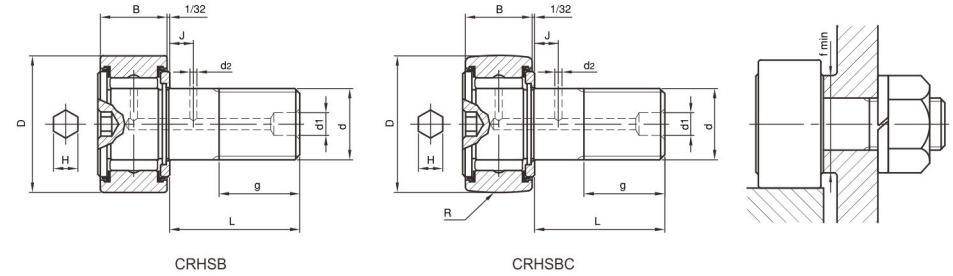
(2)帶密封環油脂潤滑的極限為表列數值的60%。
With grease lubrication, 60% of the value given in the tables are permissible for sealed executions.

尺寸 Dimensions							基本額定負荷 Basic load ratings		最大 工作荷重 Working load Max.	極限 回轉速 Limited Speed
d Thread	g	d1	d2	J	H	f	動 Dynamic C lbf	靜 Static Co lbf	lbf	油脂潤滑 Grease rpm(1)
inch	inch mm	inch mm	inch mm	inch mm	inch	inch mm	kgf	kgf	kgf	
1/4-28UNF	1/4	—	—	—	1/8	13/32	1100	1170	640	10000
	6.350	—	—	—		10.319	500	530	290	
5/16-24UNF	5/16	—	—	—	1/8	15/32	1590	1940	900	7700
	7.938	—	—	—		11.906	720	880	410	
7/16-20UNF	3/8	3/16	3/32	1/4	3/16	39/64	2090	3150	1500	5800
	9.525	4.762	2.381	6.350		15.478	950	1430	680	
7/16-20UNF	3/8	3/16	3/32	1/4	3/16	39/64	2090	3150	1740	5800
	9.525	4.762	2.381	6.350		15.478	950	1430	790	
5/8-18UNF	1/2	3/16	3/32	1/4	1/4	25/32	3130	4760	2650	4600
	12.700	4.762	2.381	6.350		19.844	1420	2160	1200	
5/8-18UNF	1/2	3/16	3/32	1/4	1/4	25/32	3130	4760	2650	4600
	12.700	4.762	2.381	6.350		19.844	1420	2160	1200	
3/4-16UNF	5/8	3/16	3/32	5/16	1/4	63/64	4540	8400	4190	3500
	15.875	4.762	2.381	7.938		25.003	2060	3810	1900	
3/4-16UNF	5/8	3/16	3/32	5/16	1/4	63/64	4540	8400	4190	3500
	15.875	4.762	2.381	7.938		25.003	2060	3810	1900	
7/8-14UNF	3/4	3/16	3/32	3/8	5/16	1 3/32	6020	10300	5290	3100
	19.050	4.762	2.381	9.525		27.781	2730	4670	2400	
7/8-14UNF	3/4	3/16	3/32	3/8	5/16	1 3/32	6020	10300	5290	3100
	19.050	4.762	2.381	9.525		27.781	2730	4670	2400	
1-14UNS	7/8	3/16	3/32	7/16	5/16	1 1/4	8970	14400	7340	2600
	22.225	4.762	2.381	11.112		31.75	4070	6530	3340	

(3)1Kg=9.807 N=2.205 lbf 1lbf=0.454 Kg=4.448 N

螺柄滾輪型

Stud type track rollers

英制六角孔_重荷型
With hexagonal socket-
heavy dutyCRHSB
CRHSBC

滾輪外徑 Outer ring diameter		軸承型號 Series 1/16 inch 帶密封環 With seals		單位重 Weight	尺寸 Dimensions			
D 0 -0.001 inch	0 -0.025 mm	圓筒外輪 Cylindrical outer ring	球面外輪 Crowned outer ring R	g	d ±0.001 inch ±0.025 mm	B inch 0 -0.13 mm	R inch mm	L inch mm
1 7/8	47.625	CRHSB 30	CRHSBC 30	550	1 25.400	1 25.400	20 508	1 3/4 44.450
2	50.800	CRHSB 32	CRHSBC 32	740	1 1/8 28.575	1 1/4 31.750	24 609.6	2 50.800
2 1/4	57.150	CRHSB 36	CRHSBC 36	890	1 1/8 28.575	1 1/4 31.750	24 609.6	2 50.800
2 1/2	63.500	CRHSB 40	CRHSBC 40	1285	1 1/4 31.750	1 1/2 38.100	30 762	2 1/4 57.150
2 3/4	69.850	CRHSB 44	CRHSBC 44	1485	1 1/4 31.750	1 1/2 38.100	30 762	2 1/4 57.150
3	76.200	CRHSB 48	CRHSBC 48	2115	1 1/2 38.100	1 3/4 44.450	30 762	2 1/2 63.500
3 1/4	82.550	CRHSB 52	CRHSBC 52	2400	1 1/2 38.100	1 3/4 44.450	30 762	2 1/2 63.500
3 1/2	88.900	CRHSB 56	CRHSBC 56	3240	1 3/4 44.450	2 50.800	30 762	2 3/4 69.850
4	101.600	CRHSB 64	CRHSBC 64	4960	2 50.800	2 1/4 57.150	30 762	3 1/2 88.900

(1)當使用機油潤滑時，極限回轉速為表列數值的130%。
With oil lubrication, 130% of the values given in the tables are permissible.

(2)帶密封環油脂潤滑的極限為表列數值的60%。
With grease lubrication, 60% of the value given in the tables are permissible for sealed executions.

尺寸 Dimensions							基本額定負荷 Basic load ratings		最大 工作荷重 Working load Max.	極限 回轉速 Limited Speed
d Thread	g inch mm	d1 inch mm	d2 inch mm	J inch mm	H inch mm	f inch mm	動 Dynamic C lbf kgf	靜 Static Co lbf kgf	lbf kgf	油脂潤滑 Grease rpm(1)
1-14UNS	7/8 22.225	3/16 4.762	3/32 2.381	7/16 11.112	5/16	1 1/4 31.75	8970 4070	14400 6530	7340 3340	2600
1 1/8-12UNF	1 25.400	3/16 4.762	3/32 2.381	1/2 12.700	7/16	1 13/32 35.719	11500 5220	20500 9300	10500 4770	2000
1 1/8-12UNF	1 25.400	3/16 4.762	3/32 2.381	1/2 12.700	7/16	1 13/32 35.719	11500 5220	20500 9300	10500 4770	2000
1 1/4-12UNF	1 1/8 28.575	3/16 4.762	1/8 3.175	9/16 14.288	1/2	1 11/16 42.863	13500 6120	26800 12200	14200 6450	1800
1 1/4-12UNF	1 1/8 28.575	3/16 4.762	1/8 3.175	9/16 14.288	1/2	1 11/16 42.863	13500 6120	26800 12200	14200 6450	1800
1 1/2-12UNS	1 1/4 31.750	1/4 6.350	1/8 3.175	5/8 15.875	5/8	2 1/8 53.975	18500 8390	43900 19900	20700 9410	1700
1 1/2-12UNS	1 1/4 31.750	1/4 6.350	1/8 3.175	5/8 15.875	5/8	2 1/8 53.975	18500 8390	43900 19900	20700 9410	1700
1 3/4-12UNF	1 3/8 34.925	1/4 6.350	1/8 3.175	11/16 17.462	5/8	2 7/16 61.913	23400 10600	56400 25600	27300 12400	1500
2-12UNF	1 1/2 38.100	1/4 6.350	1/8 3.175	3/4 19.050	3/4	2 51/64 71.041	28700 13000	68400 31000	34400 15600	1300

(3)1Kgf=9.807 N=2.205 lbf 1lbf=0.454 Kgf=4.448 N