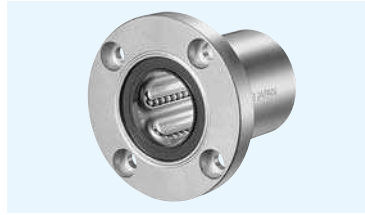


# SWF TYPE (Inch Standard)

– Round Flange Type –



## part number structure

example **SWSF 16 G UU -SK**

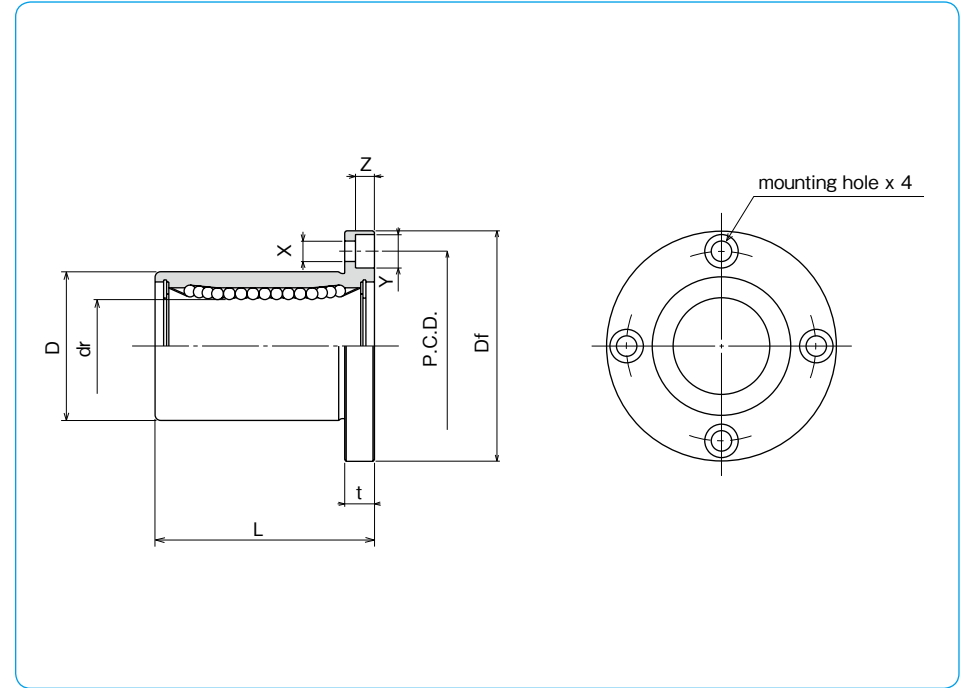
specification  
**SWF:** standard  
**SWSF:** anti-corrosion

size

retainer material  
**blank:** standard/steel  
 anti-corrosion/stainless steel  
**G:** resin

outer cylinder  
 surface treatment  
**blank:** no surface treatment  
**SK:** electroless nickel plating  
**LF:** low temperature black chrome  
 treatment with fluoride coating  
**SB:** black oxide (not available on  
 anti-corrosion type)  
**SC:** industrial chrome plating

seal  
**blank:** without seal  
**UU:** seals on both sides



part number				number of ball circuits	major dimensions		
standard steel retainer	anti-corrosion resin retainer	stainless steel retainer	resin retainer		dr	D	L
inch	inch	inch	inch	inch	inch	inch	
SWF 4	SWF 4G	SWSF 4	SWSF 4G	4	.2500 (6.350)	.5000 (12.700)	.7500 (19.050)
SWF 6	SWF 6G	SWSF 6	SWSF 6G	4	.3750 (9.525)	.6250 (15.875)	.8750 (22.225)
SWF 8	SWF 8G	SWSF 8	SWSF 8G	4	.5000 (12.700)	.8750 (22.225)	1.2500 (31.750)
SWF10	SWF10G	SWSF10	SWSF10G	4	.6250 (15.875)	1.1250 (28.575)	1.5000 (38.100)
SWF12	SWF12G	SWSF12	SWSF12G	5	.7500 (19.050)	1.2500 (31.750)	1.6250 (41.275)
SWF16	SWF16G	SWSF16	SWSF16G	6	1.0000 (25.400)	1.5625 (39.688)	2.2500 (57.150)
SWF20	SWF20G	SWSF20	SWSF20G	6	1.2500 (31.750)	2.0000 (50.800)	2.6250 (66.675)
SWF24	SWF24G	SWSF24	SWSF24G	6	1.5000 (38.100)	2.3750 (60.325)	3.0000 (76.200)
SWF32	SWF32G	SWSF32	SWSF32G	6	2.0000 (50.800)	3.0000 (76.200)	4.0000 (101.600)
SWF40	—	—	—	6	2.5000 (63.500)	3.7500 (95.250)	5.0000 (127.000)
SWF48	—	—	—	6	3.0000 (76.200)	4.5000 (114.300)	6.0000 (152.400)
SWF64	—	—	—	6	4.0000 (101.600)	6.0000 (152.400)	8.0000 (203.200)

Df	t	flange		eccentricity	perpendicularity	basic load rating		mass	shaft diameter
		P.C.D.	X × Y × Z			dynamic C	static Co		
inch/(mm)	inch/(mm)	inch/(mm)	inch/(mm)	inch (μm)	inch (μm)	N	N	g	inch (mm)
1.2500 (31.750)	0.219 (5.556)	.8750 (22.225)	.1560 × 2500 × .1410 (3.969 × 6.350 × 3.572)	.0005 (12)	.0005 (12)	206	265	32	1/4 (6.350)
1.5000 (38.100)	.2500 (6.350)	1.0620 (26.988)	.1875 × 2970 × .1720 (4.763 × 7.541 × 4.366)	.0005 (12)	.0005 (12)	225	314	47	3/8 (9.525)
1.7500 (44.450)	.2500 (6.350)	1.312 (33.338)	.1875 × 2970 × .1720 (4.763 × 7.541 × 4.366)	.0005 (12)	.0005 (12)	510	784	88	1/2 (12.700)
2.0000 (50.800)	.2500 (6.350)	1.5620 (39.688)	.1875 × 2970 × .1720 (4.763 × 7.541 × 4.366)	.0005 (12)	.0005 (12)	774	1,180	140	5/8 (15.875)
2.1875 (55.563)	.3125 (7.938)	1.7180 (43.660)	.2187 × 3440 × .2030 (5.556 × 8.731 × 5.159)	.0006 (15)	.0006 (15)	862	1,370	190	3/4 (19.050)
2.5000 (63.500)	.3125 (7.938)	2.0310 (51.594)	.2187 × 3440 × .2030 (5.556 × 8.731 × 5.159)	.0006 (15)	.0006 (15)	980	1,570	325	1 (25.400)
3.1250 (79.375)	.3750 (9.525)	2.5625 (65.088)	.2812 × 4060 × .2656 (7.144 × 10.319 × 6.747)	.0008 (20)	.0008 (20)	1,570	2,740	665	1-1/4 (31.750)
3.7500 (95.250)	.5000 (12.700)	3.0625 (77.788)	.3440 × 5000 × .3280 (8.731 × 12.700 × 8.334)	.0008 (20)	.0008 (20)	2,180	4,020	1,100	1-1/2 (38.100)
4.3750 (111.125)	.5000 (12.700)	3.6875 (93.662)	.3440 × 5000 × .3280 (8.731 × 12.700 × 8.334)	.0010 (25)	.0010 (25)	3,820	7,940	1,760	2 (50.800)
5.3750 (136.525)	.7500 (19.050)	4.5625 (115.887)	.4062 × 6250 × .3750 (10.319 × 15.875 × 9.525)	.0010 (25)	.0010 (25)	4,700	10,000	3,570	2-1/2 (63.500)
6.1250 (155.575)	.7500 (19.050)	5.3125 (134.937)	.4062 × 6250 × .3750 (10.319 × 15.875 × 9.525)	.0010 (25)	.0010 (25)	7,350	16,000	5,600	3 (76.200)
8.0000 (203.200)	.8750 (22.225)	7.0000 (177.800)	.5000 × 7125 × .5000 (12.700 × 18.097 × 12.700)	.0012 (30)	.0012 (30)	14,100	34,800	12,000	4 (101.600)

1N ≅ 0.225lbf 1kg ≅ 2.205lbf

# SWK TYPE (Inch Standard)

– Square Flange Type –



## part number structure

example **SWSK 16 G UU -SK**

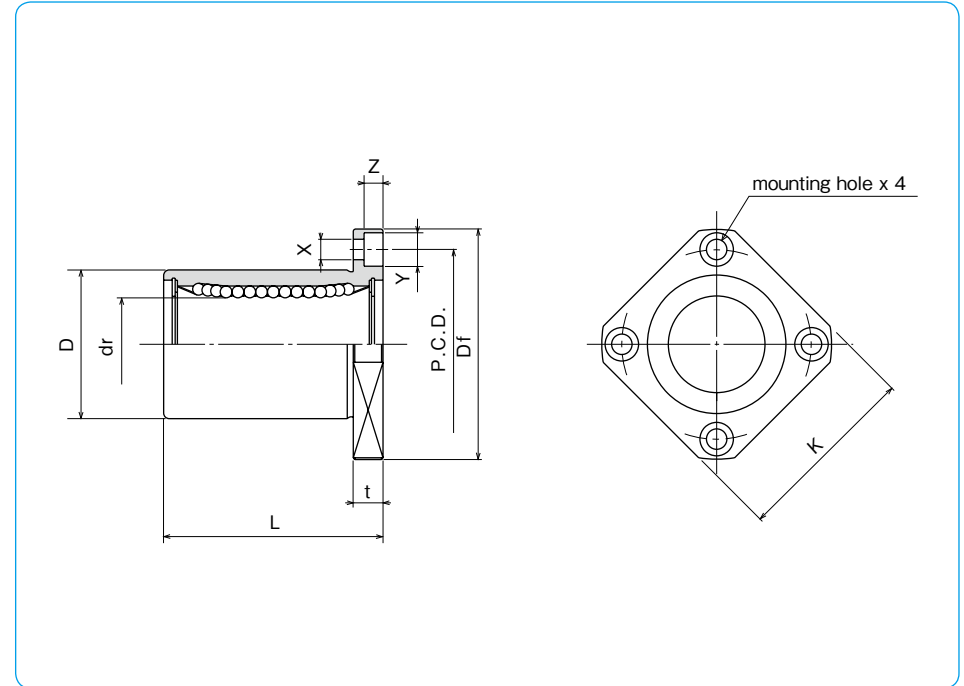
specification  
**SWK:** standard  
**SWSK:** anti-corrosion

size

retainer material  
**blank:** standard/steel  
 anti-corrosion/stainless steel  
**G:** resin

outer cylinder  
 surface treatment  
**blank:** no surface treatment  
**SK:** electroless nickel plating  
**LF:** low temperature black chrome  
 treatment with fluoride coating  
**SB:** black oxide (not available on  
 anti-corrosion type)  
**SC:** industrial chrome plating

seal  
**blank:** without seal  
**UU:** seals on both sides



part number				number of ball circuits	major dimensions		
standard steel retainer	anti-corrosion resin retainer	stainless steel retainer	resin retainer		dr inch (mm) tolerance inch/(μm)	D inch (mm) tolerance inch/(μm)	L ±.012 (±0.3) inch/(mm)
<b>SWK 4</b>	<b>SWK 4G</b>	<b>SWSK 4</b>	<b>SWSK 4G</b>	4	.2500 (6.350)	.5000 (12.700)	.7500 (19.050)
<b>SWK 6</b>	<b>SWK 6G</b>	<b>SWSK 6</b>	<b>SWSK 6G</b>	4	.3750 (9.525)	.6250 (15.875)	.8750 (22.225)
<b>SWK 8</b>	<b>SWK 8G</b>	<b>SWSK 8</b>	<b>SWSK 8G</b>	4	.5000 (12.700)	.8750 (22.225)	1.2500 (31.750)
<b>SWK10</b>	<b>SWK10G</b>	<b>SWSK10</b>	<b>SWSK10G</b>	4	.6250 (15.875)	1.1250 (28.575)	1.5000 (38.100)
<b>SWK12</b>	<b>SWK12G</b>	<b>SWSK12</b>	<b>SWSK12G</b>	5	.7500 (19.050)	1.2500 (31.750)	1.6250 (41.275)
<b>SWK16</b>	<b>SWK16G</b>	<b>SWSK16</b>	<b>SWSK16G</b>	6	1.0000 (25.400)	1.5625 (39.688)	2.2500 (57.150)
<b>SWK20</b>	<b>SWK20G</b>	<b>SWSK20</b>	<b>SWSK20G</b>	6	1.2500 (31.750)	2.0000 (50.800)	2.6250 (66.675)
<b>SWK24</b>	<b>SWK24G</b>	<b>SWSK24</b>	<b>SWSK24G</b>	6	1.5000 (38.100)	2.3750 (60.325)	3.0000 (76.200)
<b>SWK32</b>	<b>SWK32G</b>	<b>SWSK32</b>	<b>SWSK32G</b>	6	2.0000 (50.800)	3.0000 (76.200)	4.0000 (101.600)
<b>SWK40</b>	–	–	–	6	2.5000 (63.500)	3.7500 (95.250)	5.0000 (127.000)
<b>SWK48</b>	–	–	–	6	3.0000 (76.200)	4.5000 (114.300)	6.0000 (152.400)
<b>SWK64</b>	–	–	–	6	4.0000 (101.600)	6.0000 (152.400)	8.0000 (203.200)

flange					eccentricity inch (μm)	perpendicularity inch (μm)	basic load rating		mass g	shaft diameter inch (mm)
Df inch (mm)	K inch (mm)	t inch (mm)	P.C.D. inch (mm)	X × Y × Z inch (mm)			dynamic C N	static Co N		
1.2500 (31.750)	1.0000 (25.400)	0.219 (5.556)	.8750 (22.225)	.1560 × 2500 × .1410 (3.969 × 6.350 × 3.572)	.0005 (12)	.0005 (12)	206	265	25 (6.350)	
1.5000 (38.100)	1.2500 (31.750)	.2500 (6.350)	1.0620 (26.988)	.1875 × 2970 × .1720 (4.763 × 7.541 × 4.366)			225	314	32 (9.525)	
1.7500 (44.450)	1.3750 (34.925)	.2500 (6.350)	1.312 (33.338)	.1875 × 2970 × .1720 (4.763 × 7.541 × 4.366)			510	784	68 (12.700)	
2.0000 (50.800)	1.5000 (38.100)	.2500 (6.350)	1.5620 (39.688)	.1875 × 2970 × .1720 (4.763 × 7.541 × 4.366)			774	1,180	124 (15.875)	
2.1875 (55.563)	1.6875 (42.863)	.3125 (7.938)	1.7180 (43.660)	.2187 × 3440 × .2030 (5.556 × 8.731 × 5.159)	.0006 (15)	.0006 (15)	862	1,370	150 (19.050)	
2.5000 (63.500)	2.0000 (50.800)	.3125 (7.938)	2.0310 (51.594)	.2187 × 3440 × .2030 (5.556 × 8.731 × 5.159)			980	1,570	280 (25.400)	
3.1250 (79.375)	2.5000 (63.500)	.3750 (9.525)	2.5625 (65.088)	.2812 × 4060 × .2656 (7.144 × 10.319 × 6.747)			1,570	2,740	580 (31.750)	
3.7500 (95.250)	3.0000 (76.200)	.5000 (12.700)	3.0625 (77.788)	.3440 × 5000 × .3280 (8.731 × 12.700 × 8.334)			2,180	4,020	930 (38.100)	
4.3750 (111.125)	3.5000 (88.900)	.5000 (12.700)	3.6875 (93.662)	.3440 × 5000 × .3280 (8.731 × 12.700 × 8.334)	.0008 (20)	.0008 (20)	3,820	7,940	1,580 (50.800)	
5.3750 (136.525)	4.3750 (111.125)	.7500 (19.050)	4.5625 (115.887)	.4062 × 6250 × .3750 (10.319 × 15.875 × 9.525)			4,700	10,000	3,200 (63.500)	
6.1250 (155.575)	5.0000 (127.000)	.7500 (19.050)	5.3125 (134.937)	.4062 × 6250 × .3750 (10.319 × 15.875 × 9.525)			7,350	16,000	5,000 (76.200)	
8.0000 (203.200)	6.7500 (171.450)	.8750 (22.225)	7.0000 (177.800)	.5000 × 7125 × .5000 (12.700 × 18.097 × 12.700)			14,100	34,800	11,300 (101.600)	

1N≅0.225lbf 1kg≅2.205lbf

# SWT TYPE (Inch Standard)

– Two Side Cut Flange Type –



## part number structure

example **SWST 12 G UU -SK**

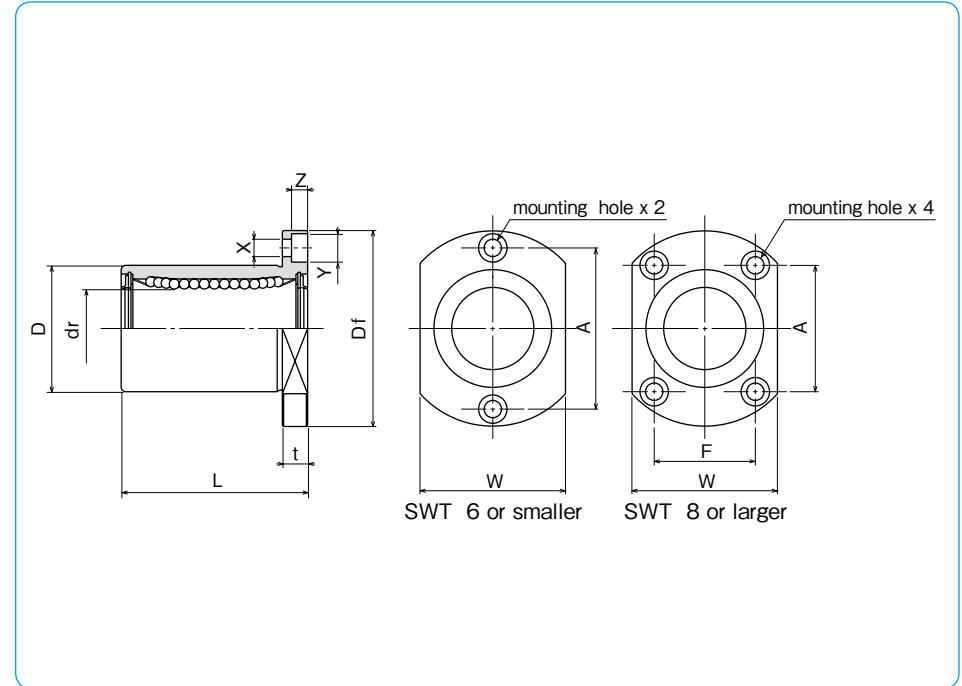
specification  
**SWT:** standard  
**SWST:** anti-corrosion

size

retainer material  
**blank:** standard/steel  
 anti-corrosion/stainless steel  
**G:** resin

outer cylinder  
 surface treatment  
**blank:** no surface treatment  
**SK:** electroless nickel plating  
**LF:** low temperature black chrome  
 treatment with fluoride coating  
**SB:** black oxide (not available on  
 anti-corrosion type)  
**SC:** industrial chrome plating

seals on both sides



part number				number of ball circuits	major dimensions		
standard steel retainer	anti-corrosion resin retainer	stainless steel retainer	resin retainer		dr	D	L
inch (mm)	inch (mm)	inch (mm)	inch (mm)	inch (mm)	inch (mm)	inch (mm)	
SWT 4 UU	SWT 4G UU	SWST 4 UU	SWST 4G UU	4	.2500 (6.350)	.5000 (12.700)	.7500 (19.050)
SWT 6 UU	SWT 6G UU	SWST 6 UU	SWST 6G UU	4	.3750 (9.525)	.6250 (15.875)	.8750 (22.225)
SWT 8 UU	SWT 8G UU	SWST 8 UU	SWST 8G UU	4	.5000 (12.700)	.8750 (22.225)	1.2500 (31.750)
SWT10 UU	SWT10G UU	SWST10 UU	SWST10G UU	4	.6250 (15.875)	1.1250 (28.575)	1.5000 (38.100)
SWT12 UU	SWT12G UU	SWST12 UU	SWST12G UU	5	.7500 (19.050)	1.2500 (31.750)	1.6250 (41.275)
SWT16 UU	SWT16G UU	SWST16 UU	SWST16G UU	6	1.0000 (25.400)	1.5625 (39.688)	2.2500 (57.150)
SWT20 UU	SWT20G UU	SWST20 UU	SWST20G UU	6	1.2500 (31.750)	2.0000 (50.800)	2.6250 (66.675)

\* UU type is standard.

flange							eccentricity	perpendicularity	basic load rating		mass	shaft diameter
Df	W	t	A	F	X×Y×Z	inch (μm)			inch (μm)	dynamic C N		
1.2500 (31.750)	.7500 (19.050)	.2190 (5.556)	.8750 (22.225)	—	.1560×.2500×.1410 (3.969×6.350×3.572)	.0005 (12)	.0005 (12)	206	265	28	1/4 (6.350)	
1.5000 (38.100)	.8750 (22.225)	.2500 (6.350)	1.0625 (26.988)	—	.1875×.2970×.1720 (4.763×7.541×4.366)	.0005 (12)	.0005 (12)	225	314	44	3/8 (9.525)	
1.7500 (44.450)	1.1250 (28.575)	.2500 (6.350)	1.1250 (33.338)	.6875 (17.463)	.1875×.2970×.1720 (4.763×7.541×4.366)	.0006 (15)	.0006 (15)	510	784	77	1/2 (12.700)	
2.0000 (50.800)	1.3750 (34.925)	.2500 (6.350)	1.2500 (31.750)	.9375 (23.813)	.1875×.2970×.1720 (4.763×7.541×4.366)	.0006 (15)	.0006 (15)	774	1,180	125	5/8 (15.875)	
2.1875 (55.563)	1.5000 (38.100)	.3125 (7.938)	1.3750 (34.925)	1.0000 (25.400)	2.187×.3440×.2030 (5.556×8.731×5.159)	.0008 (20)	.0008 (20)	862	1,370	162	3/4 (19.050)	
2.5000 (63.500)	1.8750 (47.625)	.3125 (7.938)	1.5625 (39.688)	1.3125 (33.338)	2.187×.3440×.2030 (5.556×8.731×5.159)	.0008 (20)	.0008 (20)	980	1,570	293	1 (25.400)	
3.1250 (79.375)	2.3750 (60.325)	.3750 (9.525)	1.8750 (47.625)	1.7500 (44.450)	2.812×.4060×.2656 (7.144×10.319×6.747)	.0008 (20)	.0008 (20)	1,570	2,740	586	1-1/4 (31.750)	

1N≅0.225lbf 1kg≅2.205lbs

# SWF-W TYPE (Inch Standard)

– Round Flange Double-Wide Type –



### part number structure

example **SWSF 16 G W UU -SK**

specification  
**SWF:** standard  
**SWSF:** anti-corrosion

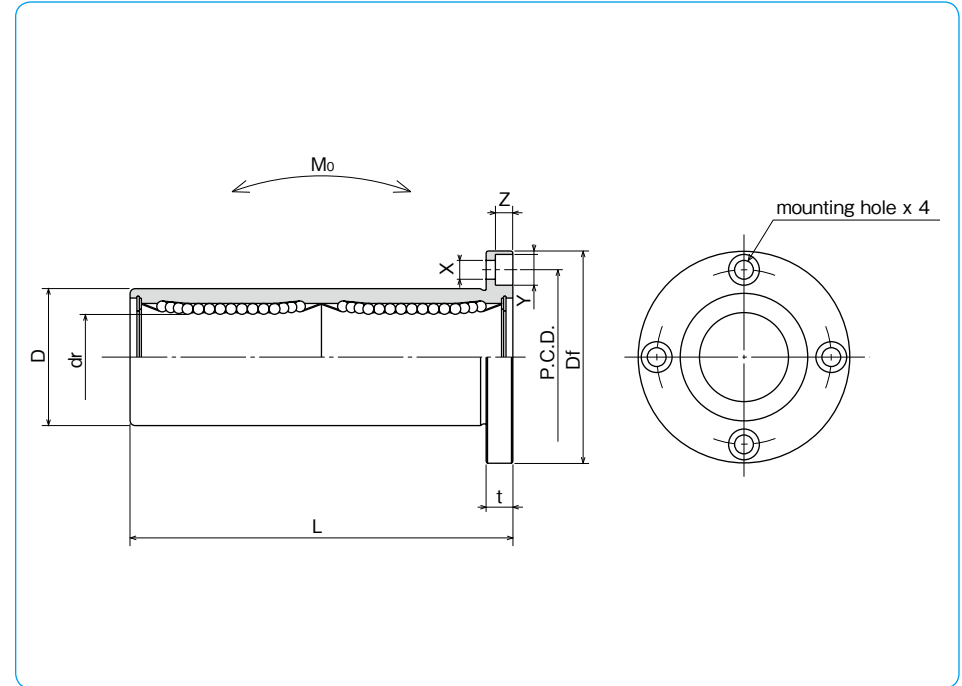
size

retainer material  
**blank:** standard/steel  
 anti-corrosion/stainless steel  
**G:** resin

outer cylinder surface treatment  
**blank:** no surface treatment  
**SK:** electroless nickel plating  
**LF:** low temperature black chrome treatment with fluoride coating  
**SB:** black oxide (not available on anti-corrosion type)  
**SC:** industrial chrome plating

seal  
**blank:** without seal  
**UU:** seals on both sides

double-wide type



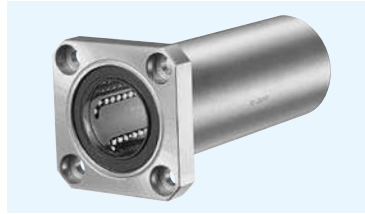
part number				number of ball circuits	major dimensions		
standard steel retainer	anti-corrosion resin retainer	stainless retainer	resin retainer		dr inch (mm) tolerance inch/(μm)	D inch (mm) tolerance inch/(μm)	L ±.012 (±0.3) inch/(mm)
SWF 4W	SWF 4GW	SWSF 4W	SWSF 4GW	4	.2500 (6.350)	.5000 (12.700)	1.3750 (34.925)
SWF 6W	SWF 6GW	SWSF 6W	SWSF 6GW	4	.3750 (9.525)	.6250 (15.875)	1.5938 (40.481)
SWF 8W	SWF 8GW	SWSF 8W	SWSF 8GW	4	.5000 (12.700)	.8750 (22.225)	2.3750 (60.325)
SWF10W	SWF10GW	SWSF10W	SWSF10GW	4	.6250 (15.875)	1.1250 (28.575)	2.8125 (71.438)
SWF12W	SWF12GW	SWSF12W	SWSF12GW	5	.7500 (19.050)	1.2500 (31.750)	3.0937 (78.581)
SWF16W	SWF16GW	SWSF16W	SWSF16GW	6	1.0000 (25.400)	1.5625 (39.688)	4.2813 (108.744)
SWF20W	SWF20GW	SWSF20W	SWSF20GW	6	1.2500 (31.750)	2.0000 (50.800)	5.0000 (127.000)
SWF24W	SWF24GW	SWSF24W	SWSF24GW	6	1.5000 (38.100)	2.3750 (60.325)	5.6875 (144.463)
SWF32W	SWF32GW	SWSF32W	SWSF32GW	6	2.0000 (50.800)	3.0000 (76.200)	7.7500 (196.850)

Df inch/(mm)	t inch/(mm)	flange		eccentricity inch (μm)	perpendicularity inch (μm)	basic load rating		allowable static moment Mo N·m	mass g	shaft diameter inch (mm)
		P.C.D. inch/(mm)	X×Y×Z inch/(mm)			dynamic C N	static Co N			
1.2500 (31.750)	.2188 (5.556)	.8750 (22.225)	.1563×.2500×.1406 (3.969×6.350×3.572)	.0006 (15)	.0006 (15)	323	530	2.0	40	1/4 (6.350)
1.5000 (38.100)	.2500 (6.350)	1.0625 (26.988)	.1875×.2969×.1719 (4.763×7.541×4.366)			353	630	2.7	60	3/8 (9.525)
1.7500 (44.450)	.2500 (6.350)	1.3125 (33.338)	.1875×.2969×.1719 (4.763×7.541×4.366)			813	1,570	11.5	126	1/2 (12.700)
2.0000 (50.800)	.2500 (6.350)	1.5625 (39.688)	.1875×.2969×.1719 (4.763×7.541×4.366)			1,230	2,350	20.0	215	5/8 (15.875)
2.1875 (55.563)	.3125 (7.938)	1.7188 (43.656)	.2188×.3438×.2031 (5.556×8.731×5.159)	.0008 (20)	.0008 (20)	1,370	2,740	26.5	280	3/4 (19.050)
2.5000 (63.500)	.3125 (7.938)	2.0313 (51.594)	.2188×.3438×.2031 (5.556×8.731×5.159)			1,570	3,140	41.2	515	1 (25.400)
3.1250 (79.375)	.3750 (9.525)	2.5625 (65.088)	.2813×.4063×.2656 (7.144×10.319×6.747)			2,500	5,490	84.8	1,020	1-1/4 (31.750)
3.7500 (95.250)	.5000 (12.700)	3.0625 (77.788)	.3437×.5000×.3281 (8.731×12.700×8.334)	.0012 (30)	.0012 (30)	3,430	8,040	143	1,630	1-1/2 (38.100)
4.3750 (111.125)	.5000 (12.700)	3.6875 (93.662)	.3437×.5000×.3281 (8.731×12.700×8.334)			6,080	15,900	399	2,800	2 (50.800)

1N=0.225lbf 1N·m=0.738lb·ft  
 1kg=2.205lbs

# SWK-W TYPE (Inch Standard)

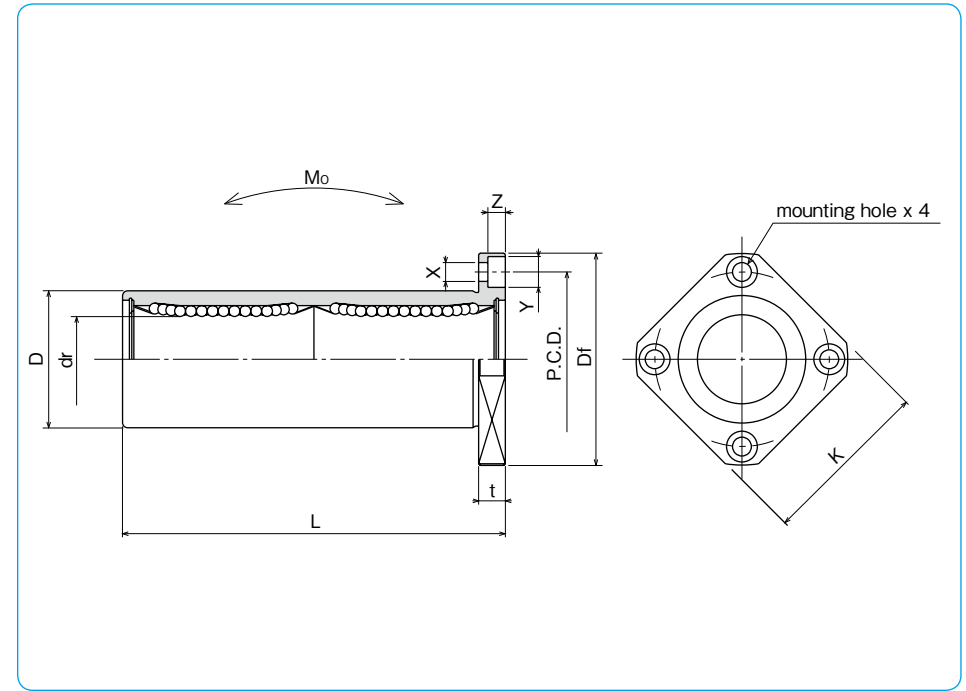
– Square Flange Double-Wide Type –



## part number structure

example **SWSK 16 G W UU -SK**

specification <b>SWK</b> : standard <b>SWSK</b> : anti-corrosion	size	retainer material <b>blank</b> : standard/steel anti-corrosion/stainless steel <b>G</b> : resin	outer cylinder surface treatment <b>blank</b> : no surface treatment <b>SK</b> : electroless nickel plating <b>LF</b> : low temperature black chrome treatment with fluoride coating <b>SB</b> : black oxide (not available on anti-corrosion type) <b>SC</b> : industrial chrome plating	seal <b>blank</b> : without seal <b>UU</b> : seals on both sides	double-wide type
--	------	--	--	--	------------------



part number				number of ball circuits	major dimensions				
standard steel retainer	anti-corrosion resin retainer	stainless retainer	resin retainer		dr	D		L	
				inch (mm)	tolerance inch/(μm)	inch (mm)	tolerance inch/(μm)	±.012 (±0.3) inch/(mm)	
<b>SWK 4W</b>	<b>SWK 4GW</b>	<b>SWSK 4W</b>	<b>SWSK 4GW</b>	4	.2500 (6.350)		.5000 (12.700)	<sup>0</sup> <sub>-.00050 (-13)</sub>	1.3750 (34.925)
<b>SWK 6W</b>	<b>SWK 6GW</b>	<b>SWSK 6W</b>	<b>SWSK 6GW</b>	4	.3750 (9.525)	<sup>0</sup> <sub>-.00040 (-10)</sub>	.6250 (15.875)	<sup>0</sup> <sub>-.00065 (-16)</sub>	1.5938 (40.481)
<b>SWK 8W</b>	<b>SWK 8GW</b>	<b>SWSK 8W</b>	<b>SWSK 8GW</b>	4	.5000 (12.700)		.8750 (22.225)	<sup>0</sup> <sub>-.00075 (-19)</sub>	2.3750 (60.325)
<b>SWK 10W</b>	<b>SWK 10GW</b>	<b>SWSK 10W</b>	<b>SWSK 10GW</b>	4	.6250 (15.875)		1.1250 (28.575)	<sup>0</sup> <sub>-.00090 (-22)</sub>	2.8125 (71.438)
<b>SWK 12W</b>	<b>SWK 12GW</b>	<b>SWSK 12W</b>	<b>SWSK 12GW</b>	5	.7500 (19.050)	<sup>0</sup> <sub>-.00050 (-12)</sub>	1.2500 (31.750)	<sup>0</sup> <sub>-.00075 (-19)</sub>	3.0937 (78.581)
<b>SWK 16W</b>	<b>SWK 16GW</b>	<b>SWSK 16W</b>	<b>SWSK 16GW</b>	6	1.0000 (25.400)		1.5625 (39.688)	<sup>0</sup> <sub>-.00090 (-22)</sub>	4.2813 (108.744)
<b>SWK 20W</b>	<b>SWK 20GW</b>	<b>SWSK 20W</b>	<b>SWSK 20GW</b>	6	1.2500 (31.750)	<sup>0</sup> <sub>-.00060 (-15)</sub>	2.0000 (50.800)	<sup>0</sup> <sub>-.00100 (-25)</sub>	5.0000 (127.000)
<b>SWK 24W</b>	<b>SWK 24GW</b>	<b>SWSK 24W</b>	<b>SWSK 24GW</b>	6	1.5000 (38.100)		2.3750 (60.325)	<sup>0</sup> <sub>-.00100 (-25)</sub>	5.6875 (144.463)
<b>SWK 32W</b>	<b>SWK 32GW</b>	<b>SWSK 32W</b>	<b>SWSK 32GW</b>	6	2.0000 (50.800)		3.0000 (76.200)	<sup>0</sup> <sub>-.00100 (-25)</sub>	7.7500 (196.850)

flange					eccentricity inch (μm)	perpendicularity inch (μm)	basic load rating		allowable static moment Mo N·m	mass g	shaft diameter inch/(mm)
Df	K	t	P.C.D.	X×Y×Z			dynamic C N	static Co N			
1.2500 (31.750)	1.0000 (25.400)	.2188 (5.556)	.8750 (22.225)	.1563×.2500×.1406 (3.969×6.350×3.572)	.0006 (15)	.0006 (15)	323	530	2.0	33 (6.350)	
1.5000 (38.100)	1.2500 (31.750)	.2500 (6.350)	1.0625 (26.988)	.1875×.2969×.1719 (4.763×7.541×4.366)			353	630	2.7	45 (9.525)	
1.7500 (44.450)	1.3750 (34.925)	.2500 (6.350)	1.3125 (33.338)	.1875×.2969×.1719 (4.763×7.541×4.366)			813	1,570	11.5	106 (12.700)	
2.0000 (50.800)	1.5000 (38.100)	.2500 (6.350)	1.5625 (39.688)	.1875×.2969×.1719 (4.763×7.541×4.366)			1,230	2,350	20.0	200 (15.875)	
2.1875 (55.563)	1.6875 (42.863)	.3125 (7.938)	1.7188 (43.656)	.2188×.3438×.2031 (5.556×8.731×5.159)	.0008 (20)	.0008 (20)	1,370	2,740	26.5	240 (19.050)	
2.5000 (63.500)	2.0000 (50.800)	.3125 (7.938)	2.0313 (51.594)	.2188×.3438×.2031 (5.556×8.731×5.159)			1,570	3,140	41.2	470 (25.400)	
3.1250 (79.375)	2.5000 (63.500)	.3750 (9.525)	2.5625 (65.088)	.2813×.4063×.2656 (7.144×10.319×6.747)			2,500	5,490	84.8	935 (31.750)	
3.7500 (95.250)	3.0000 (76.200)	.5000 (12.700)	3.0625 (77.788)	.3437×.5000×.3281 (8.731×12.700×8.334)			3,430	8,040	143	1,460 (38.100)	
4.3750 (111.125)	3.5000 (88.900)	.5000 (12.700)	3.6875 (93.662)	.3437×.5000×.3281 (8.731×12.700×8.334)	.0012 (30)	.0012 (30)	6,080	15,900	399	2,620 (50.800)	

1N≒0.225lbf 1N·m≒0.738lb·ft  
1kg≒2.205lbf

# SWFC TYPE (Inch Standard)

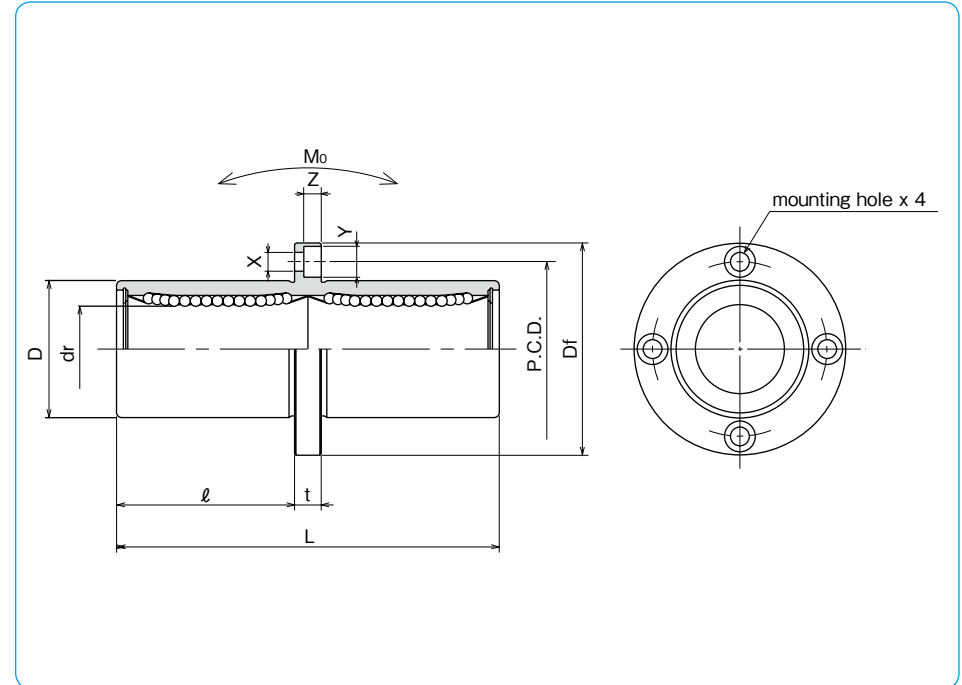
– Center Mount Round Flange Type –



### part number structure

example **SWSFC 16 G UU-SK**

specification <b>SWFC:</b> standard <b>SWSFC:</b> anti-corrosion	size	retainer material <b>blank:</b> standard/steel anti-corrosion/stainless steel <b>G:</b> resin	outer cylinder surface treatment <b>blank:</b> no surface treatment <b>SK:</b> electroless nickel plating <b>LF:</b> low temperature black chrome treatment with fluoride coating <b>SB:</b> black oxide (not available on anti-corrosion type) <b>SC:</b> industrial chrome plating	seal <b>blank:</b> without seal <b>UU:</b> seals on both sides
--	------	--	---	--



part number				number of ball circuits	major dimensions				
standard steel retainer	anti-corrosion resin retainer	stainless retainer	resin retainer		dr	D		L	
				inch (mm)	tolerance inch/(μm)	inch (mm)	tolerance inch/(μm)	±.012 (±0.3) inch/(mm)	
<b>SWFC 4</b>	<b>SWFC 4G</b>	<b>SWSFC 4</b>	<b>SWSFC 4G</b>	4	.2500 (6.350)		.5000 (12.700)	0 (-13)	1.3750 (34.925)
<b>SWFC 6</b>	<b>SWFC 6G</b>	<b>SWSFC 6</b>	<b>SWSFC 6G</b>	4	.3750 (9.525)	0 (-10)	.6250 (15.875)	0	1.5938 (40.481)
<b>SWFC 8</b>	<b>SWFC 8G</b>	<b>SWSFC 8</b>	<b>SWSFC 8G</b>	4	.5000 (12.700)		.8750 (22.225)	0 (-16)	2.3750 (60.325)
<b>SWFC10</b>	<b>SWFC10G</b>	<b>SWSFC10</b>	<b>SWSFC10G</b>	4	.6250 (15.875)		1.1250 (28.575)		2.8125 (71.438)
<b>SWFC12</b>	<b>SWFC12G</b>	<b>SWSFC12</b>	<b>SWSFC12G</b>	5	.7500 (19.050)	0 (-12)	1.2500 (31.750)	0 (-19)	3.0937 (78.581)
<b>SWFC16</b>	<b>SWFC16G</b>	<b>SWSFC16</b>	<b>SWSFC16G</b>	6	1.0000 (25.400)		1.5625 (39.688)		4.2813 (108.744)
<b>SWFC20</b>	<b>SWFC20G</b>	<b>SWSFC20</b>	<b>SWSFC20G</b>	6	1.2500 (31.750)	0 (-15)	2.0000 (50.800)	0 (-22)	5.0000 (127.000)
<b>SWFC24</b>	<b>SWFC24G</b>	<b>SWSFC24</b>	<b>SWSFC24G</b>	6	1.5000 (38.100)		2.3750 (60.325)		5.6875 (144.463)
<b>SWFC32</b>	<b>SWFC32G</b>	<b>SWSFC32</b>	<b>SWSFC32G</b>	6	2.0000 (50.800)		3.0000 (76.200)	0 (-25)	7.7500 (196.850)

flange						eccentricity inch (μm)	perpendicularity inch (μm)	basic load rating		allowable static moment Mo N·m	mass g	shaft diameter inch/(mm)
l	Df	t	P.C.D.	X × Y × Z	dynamic C N			static Co N				
inch/(mm)	inch/(mm)	inch/(mm)	inch/(mm)	inch/(mm)	C	Co						
.5781 (14.684)	1.2500 (31.750)	.2188 (5.556)	.8750 (22.225)	.1563 × .2500 × .1406 (3.969 × 6.350 × 3.572)	323	530	.0006 (15)	.0006 (15)	2.0	40	1/4 (6.350)	
.6719 (17.066)	1.5000 (38.100)	.2500 (6.350)	1.0625 (26.988)	.1875 × .2969 × .1719 (4.763 × 7.541 × 4.366)	353	630			2.7	60	3/8 (9.525)	
1.0625 (26.988)	1.7500 (44.450)	.2500 (6.350)	1.3125 (33.338)	.1875 × .2969 × .1719 (4.763 × 7.541 × 4.366)	813	1,570			11.5	126	1/2 (12.700)	
1.2813 (32.544)	2.0000 (50.800)	.2500 (6.350)	1.5625 (39.688)	.1875 × .2969 × .1719 (4.763 × 7.541 × 4.366)	1,230	2,350			20.0	215	5/8 (15.875)	
1.3906 (35.322)	2.1875 (55.563)	.3125 (7.938)	1.7188 (43.656)	.2188 × .3438 × .2031 (5.556 × 8.731 × 5.159)	1,370	2,740	.0008 (20)	.0008 (20)	26.5	280	3/4 (19.050)	
1.9844 (50.403)	2.5000 (63.500)	.3125 (7.938)	2.0313 (51.594)	.2188 × .3438 × .2031 (5.556 × 8.731 × 5.159)	1,570	3,140			41.2	515	1 (25.400)	
2.3125 (58.738)	3.1250 (79.375)	.3750 (9.525)	2.5625 (65.088)	.2813 × .4063 × .2656 (7.144 × 10.319 × 6.747)	2,500	5,490	.0010 (25)	.0010 (25)	84.8	1,020	1-1/4 (31.750)	
2.5938 (65.882)	3.7500 (95.250)	.5000 (12.700)	3.0625 (77.788)	.3437 × .5000 × .3281 (8.731 × 12.700 × 8.334)	3,430	8,040			143	1,630	1-1/2 (38.100)	
3.6250 (92.075)	4.3750 (111.125)	.5000 (12.700)	3.6875 (93.662)	.3437 × .5000 × .3281 (8.731 × 12.700 × 8.334)	6,080	15,900	.0012 (30)	.0012 (30)	399	2,800	2 (50.800)	

1N=0.225lbf 1N·m=0.738lb·ft  
1kg=2.205lbs

# SWKC TYPE (Inch Standard)

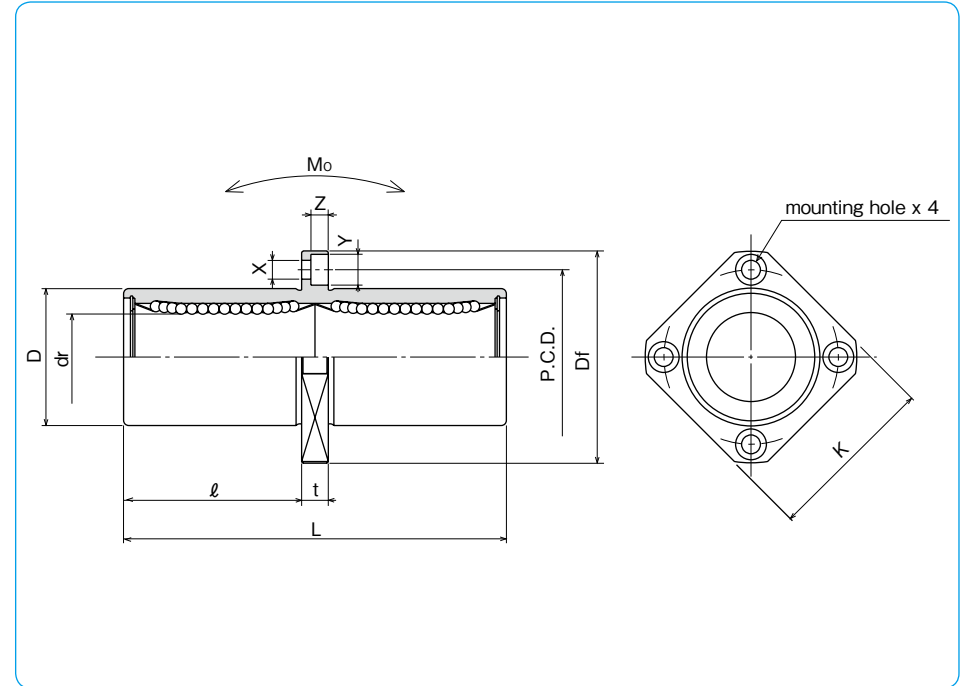
– Center Mount Square Flange Type –



### part number structure

example **SWSKC 16 G UU-SK**

specification <b>SWKC:</b> standard <b>SWSKC:</b> anti-corrosion	size	retainer material <b>blank:</b> standard/steel anti-corrosion/stainless steel <b>G:</b> resin	outer cylinder surface treatment <b>blank:</b> no surface treatment <b>SK:</b> electroless nickel plating <b>LF:</b> low temperature black chrome treatment with fluoride coating <b>SB:</b> black oxide (not available on anti-corrosion type) <b>SC:</b> industrial chrome plating	seal <b>blank:</b> without seal <b>UU:</b> seals on both sides
--	------	--	---	--



part number				number of ball circuits	major dimensions				
standard steel retainer	resin retainer	anti-corrosion stainless retainer	resin retainer		dr inch (mm)	tolerance inch/(μm)	D inch (mm)	tolerance inch/(μm)	L ±.012 (±0.3) inch/(mm)
SWKC 4	SWKC 4G	SWSKC 4	SWSKC 4G	4	.2500 (6.350)		.5000 (12.700)	<sup>0</sup> <sub>-0.0050 (-13)</sub>	1.3750 (34.925)
SWKC 6	SWKC 6G	SWSKC 6	SWSKC 6G	4	.3750 (9.525)	<sup>0</sup> <sub>-0.0040 (-10)</sub>	.6250 (15.875)	<sup>0</sup> <sub>-0.0065 (-16)</sub>	1.5938 (40.481)
SWKC 8	SWKC 8G	SWSKC 8	SWSKC 8G	4	.5000 (12.700)		.8750 (22.225)		2.3750 (60.325)
SWKC10	SWKC10G	SWSKC10	SWSKC10G	4	.6250 (15.875)		1.1250 (28.575)		2.8125 (71.438)
SWKC12	SWKC12G	SWSKC12	SWSKC12G	5	.7500 (19.050)	<sup>0</sup> <sub>-0.00050 (-12)</sub>	1.2500 (31.750)	<sup>0</sup> <sub>-0.0075 (-19)</sub>	3.0937 (78.581)
SWKC16	SWKC16G	SWSKC16	SWSKC16G	6	1.0000 (25.400)		1.5625 (39.688)		4.2813 (108.744)
SWKC20	SWKC20G	SWSKC20	SWSKC20G	6	1.2500 (31.750)	<sup>0</sup> <sub>-0.0060 (-15)</sub>	2.0000 (50.800)	<sup>0</sup> <sub>-0.0090 (-22)</sub>	5.0000 (127.000)
SWKC24	SWKC24G	SWSKC24	SWSKC24G	6	1.5000 (38.100)		2.3750 (60.325)		5.6875 (144.463)
SWKC32	SWKC32G	SWSKC32	SWSKC32G	6	2.0000 (50.800)		3.0000 (76.200)	<sup>0</sup> <sub>-0.0100 (-25)</sub>	7.7500 (196.850)

flange						eccentricity inch (μm)	perpendicularity inch (μm)	basic load rating		allowable static moment Mo N·m	mass g	shaft diameter inch (mm)
ℓ inch/(mm)	Df inch/(mm)	K inch/(mm)	t inch/(mm)	P.C.D. inch/(mm)	X×Y×Z inch/(mm)			dynamic C N	static Co N			
.5781 (14.684)	1.2500 (31.750)	1.0000 (25.400)	.2188 (5.556)	.8750 (22.225)	.1563×.2500×.1406 (3.969×6.350×3.572)	.0006 (15)	.0006 (15)	323	530	2.0	33	1/4 (6.350)
.6719 (17.066)	1.5000 (38.100)	1.2500 (31.750)	.2500 (6.350)	1.0625 (26.988)	.1875×.2969×.1719 (4.763×7.541×4.366)			353	630	2.7	45	3/8 (9.525)
1.0625 (26.988)	1.7500 (44.450)	1.3750 (34.925)	.2500 (6.350)	1.3125 (33.338)	.1875×.2969×.1719 (4.763×7.541×4.366)			813	1,570	11.5	106	1/2 (12.700)
1.2813 (32.544)	2.0000 (50.800)	1.5000 (38.100)	.2500 (6.350)	1.5625 (39.688)	.1875×.2969×.1719 (4.763×7.541×4.366)			1,230	2,350	20.0	200	5/8 (15.875)
1.3906 (35.322)	2.1875 (55.563)	1.6875 (42.863)	.3125 (7.938)	1.7188 (43.656)	2.188×.3438×.2031 (5.556×8.731×5.159)	.0008 (20)	.0008 (20)	1,370	2,740	26.5	240	3/4 (19.050)
1.9844 (50.403)	2.5000 (63.500)	2.0000 (50.800)	.3125 (7.938)	2.0313 (51.594)	2.188×.3438×.2031 (5.556×8.731×5.159)			1,570	3,140	41.2	470	1 (25.400)
2.3125 (58.738)	3.1250 (79.375)	2.5000 (63.500)	.3750 (9.525)	2.5625 (65.088)	2.813×.4063×.2656 (7.144×10.319×6.747)	.0010 (25)	.0010 (25)	2,500	5,490	84.8	935	1-1/4 (31.750)
2.5938 (65.882)	3.7500 (95.250)	3.0000 (76.200)	.5000 (12.700)	3.0625 (77.788)	.3437×.5000×.3281 (8.731×12.700×8.334)			3,430	8,040	143	1,460	1-1/2 (38.100)
3.6250 (92.075)	4.3750 (111.125)	3.5000 (88.900)	.5000 (12.700)	3.6875 (93.662)	3.6875×.5000×.3281 (8.731×12.700×8.334)	.0012 (30)	.0012 (30)	6,080	15,900	399	2,620	2 (50.800)

1N=0.225lbf 1N·m=0.738lb·ft  
1kg=2.205lbf