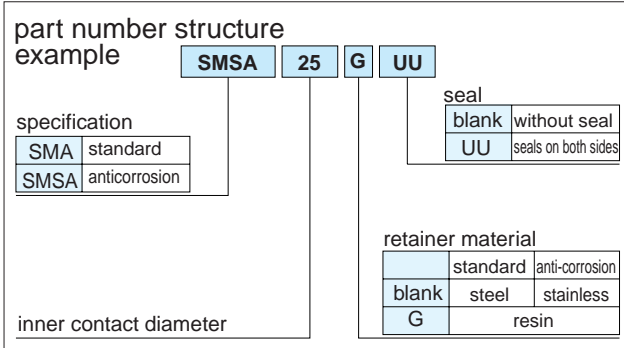
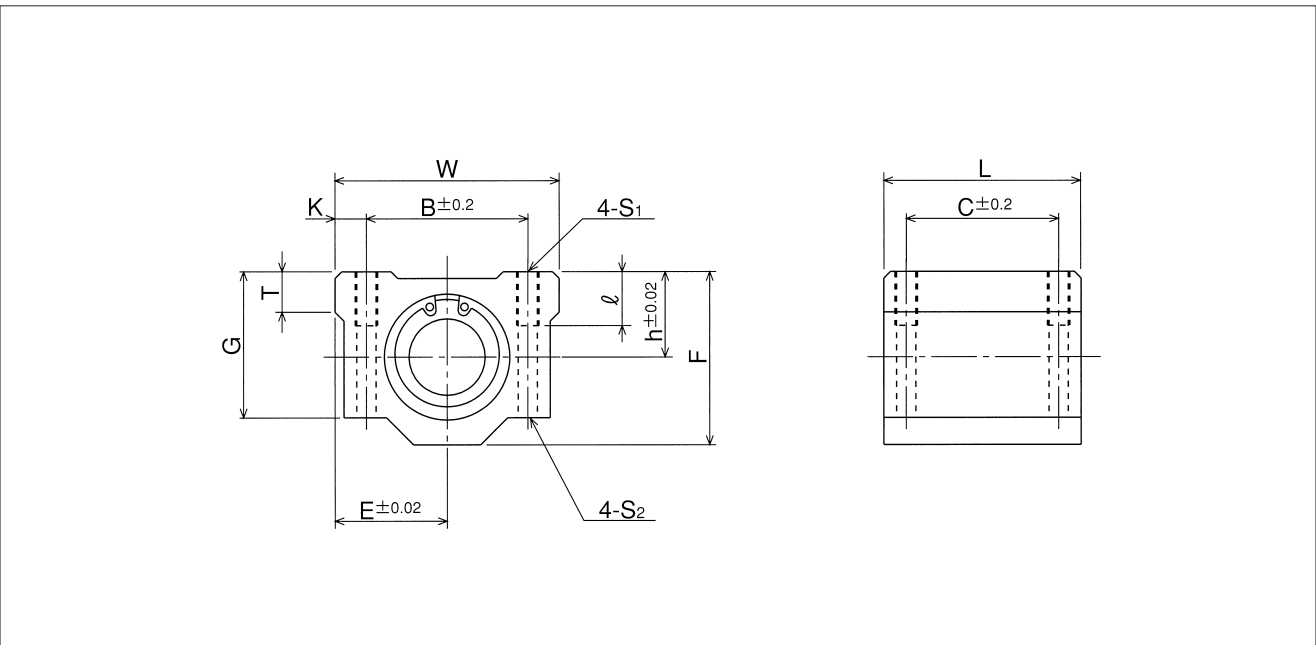


# SMA TYPE

– Block Type –



part number	major dimensions									
	inner contact diameter		outer dimensions							
	mm	tolerance $\mu\text{m}$	h mm	E mm	W mm	L mm	F mm	G mm	T mm	
SMA 3GUU	3	0	5	8	16	13	10	8	—	
SMA 4GUU	4	- 8	5.5	8.5	17	15	11	9	—	
SMA 5GUU	5		7	11	22	18	14	11	—	
SMA 6GUU	6	0	9	15	30	25	18	15	6	
SMA 8GUU	8		11	17	34	30	22	18	6	
SMA10GUU	10		13	20	40	35	26	21	8	
SMA12GUU	12		- 9	15	21	42	36	28	24	8
SMA13GUU	13		15	22	44	39	30	24.5	8	
SMA16GUU	16		19	25	50	44	38.5	32.5	9	
SMA20GUU	20	0	21	27	54	50	41	35	11	
SMA25GUU	25	- 10	26	38	76	67	51.5	42	12	
SMA30GUU	30		30	39	78	72	59.5	49	15	
SMA35GUU	35	0	34	45	90	80	68	54	18	
SMA40GUU	40	- 12	40	51	102	90	78	62	20	
SMA50GUU	50		52	61	122	110	102	80	25	
SMA60GUU	60		0/- 15	58	66	132	122	114	94	30

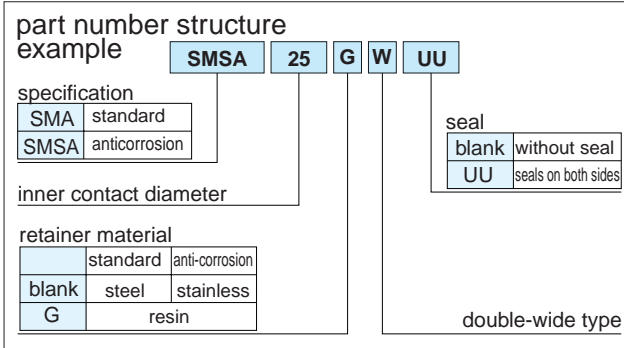
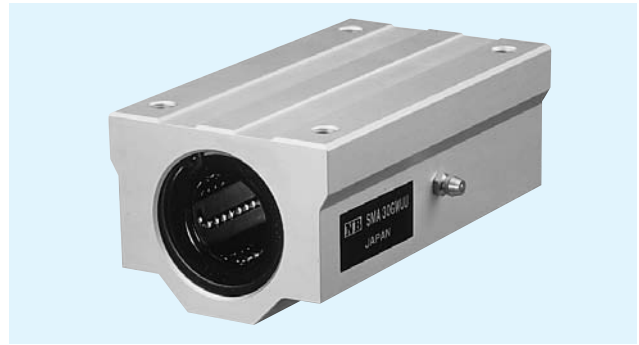


mounting dimensions						basic load rating		mass g	part number
B mm	C mm	K mm	S <sub>1</sub>	ℓ mm	S <sub>2</sub> mm	dynamic C N	static C <sub>0</sub> N		
11	8	2.5	M 2	—	—	69	105	5	<b>SMA 3GUU</b>
12	10	2.5	M 3	—	—	88	127	7	<b>SMA 4GUU</b>
16	12	3	M 3	—	—	167	206	14	<b>SMA 5GUU</b>
20	15	5	M 4	8	3.4	206	265	34	<b>SMA 6GUU</b>
24	18	5	M 4	8	3.4	274	392	52	<b>SMA 8GUU</b>
28	21	6	M 5	12	4.3	372	549	92	<b>SMA10GUU</b>
30.5	26	5.75	M 5	12	4.3	510	784	102	<b>SMA12GUU</b>
33	26	5.5	M 5	12	4.3	510	784	120	<b>SMA13GUU</b>
36	34	7	M 5	12	4.3	774	1,180	200	<b>SMA16GUU</b>
40	40	7	M 6	12	5.2	882	1,370	255	<b>SMA20GUU</b>
54	50	11	M 8	18	7	980	1,570	600	<b>SMA25GUU</b>
58	58	10	M 8	18	7	1,570	2,740	735	<b>SMA30GUU</b>
70	60	10	M 8	18	7	1,670	3,140	1,100	<b>SMA35GUU</b>
80	60	11	M10	25	8.7	2,160	4,020	1,590	<b>SMA40GUU</b>
100	80	11	M10	25	8.7	3,820	7,940	3,340	<b>SMA50GUU</b>
108	90	12	M12	25	10.7	4,700	10,000	4,270	<b>SMA60GUU</b>

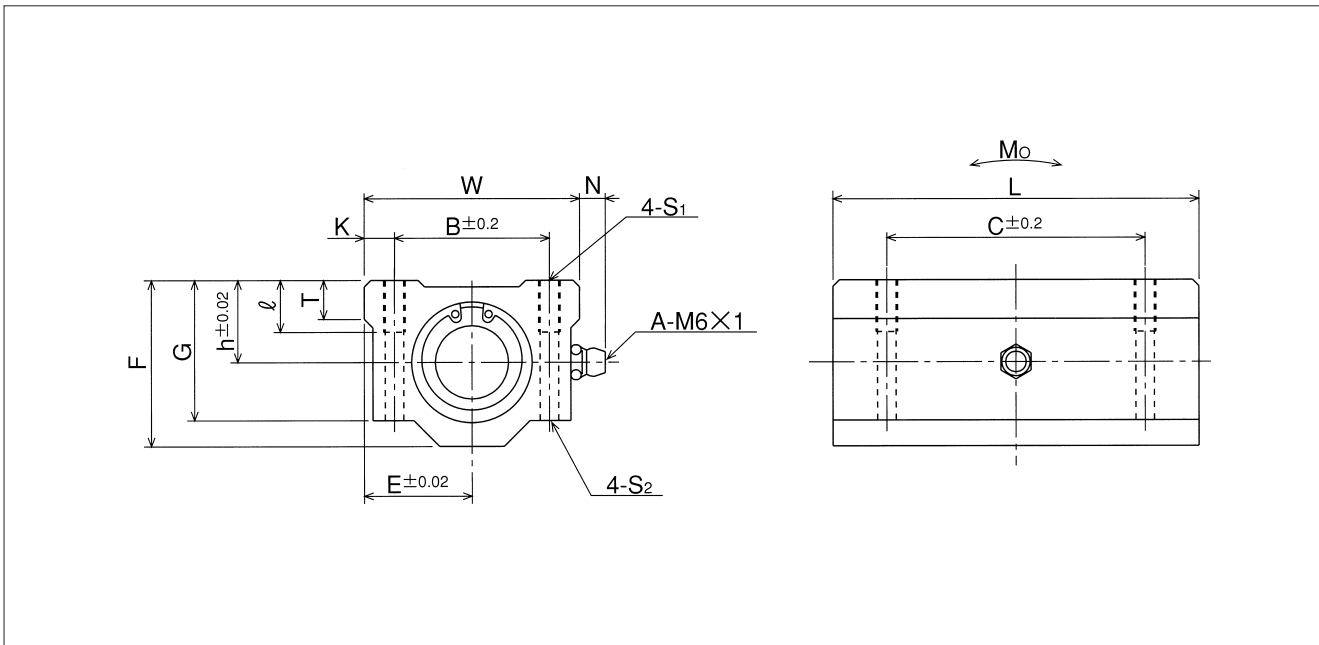
1N ≅ 0.102kgf

# SMA-W TYPE

– Double-Wide Block Type –



part number	major dimensions									
	inner contact diameter		outer dimensions							
	mm	tolerance $\mu\text{m}$	h mm	E mm	W mm	L mm	F mm	G mm	T mm	N mm
SMA 3GWUU	3	0	5	8	16	23	10	8	—	—
SMA 4GWUU	4	— 8	5.5	8.5	17	27	11	9	—	—
SMA 5GWUU	5		7	11	22	33	14	11	—	—
SMA 6GWUU	6		9	15	30	48	18	15	6	7
SMA 8GWUU	8		11	17	34	58	22	18	6	7
SMA10GWUU	10	0	13	20	40	68	26	21	8	7
SMA12GWUU	12	— 9	15	21	42	70	28	24	8	6.5
SMA13GWUU	13		15	22	44	75	30	24.5	8	6.5
SMA16GWUU	16		19	25	50	85	38.5	32.5	9	6
SMA20GWUU	20	0	21	27	54	96	41	35	11	7
SMA25GWUU	25	— 10	26	38	76	130	51.5	42	12	4
SMA30GWUU	30		30	39	78	140	59.5	49	15	5
SMA35GWUU	35	0	34	45	90	155	68	54	18	5.5
SMA40GWUU	40	— 12	40	51	102	175	78	62	20	5
SMA50GWUU	50		52	61	122	215	102	80	25	5
SMA60GWUU	60	0/— 15	58	66	132	240	114	94	30	5

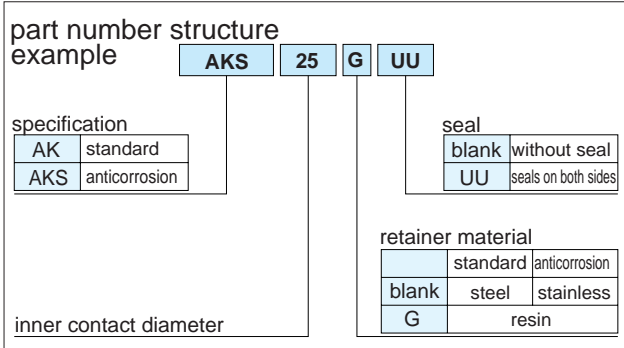


mounting dimensions						basic load rating		allowable static moment Mo N · m	mass g	part number
B mm	C mm	K mm	S <sub>1</sub>	ℓ mm	S <sub>2</sub> mm	C N	Co N			
11	16	2.5	M 2	—	—	108	206	0.49	10	SMA 3GWUU
12	20	2.5	M 3	—	—	137	255	0.72	13	SMA 4GWUU
16	25	3	M 3	—	—	265	412	1.54	27	SMA 5GWUU
20	36	5	M 4	8	3.4	323	530	2.18	63	SMA 6GWUU
24	42	5	M 4	8	3.4	431	784	4.31	102	SMA 8GWUU
28	46	6	M 5	12	4.3	588	1,100	7.24	180	SMA10GWUU
30.5	50	5.75	M 5	12	4.3	813	1,570	10.9	205	SMA12GWUU
33	50	5.5	M 5	12	4.3	813	1,570	11.6	240	SMA13GWUU
36	60	7	M 5	12	4.3	1,230	2,350	19.7	400	SMA16GWUU
40	70	7	M 6	12	5.2	1,400	2,740	26.8	570	SMA20GWUU
54	100	11	M 8	18	7	1,560	3,140	43.4	1,200	SMA25GWUU
58	110	10	M 8	18	7	2,490	5,490	82.8	1,480	SMA30GWUU
70	120	10	M 8	18	7	2,650	6,270	110	2,200	SMA35GWUU
80	140	11	M10	25	8.7	3,430	8,040	147	3,200	SMA40GWUU
100	160	11	M10	25	8.7	6,080	15,900	397	6,700	SMA50GWUU
108	180	12	M12	25	10.7	7,550	20,000	530	8,560	SMA60GWUU

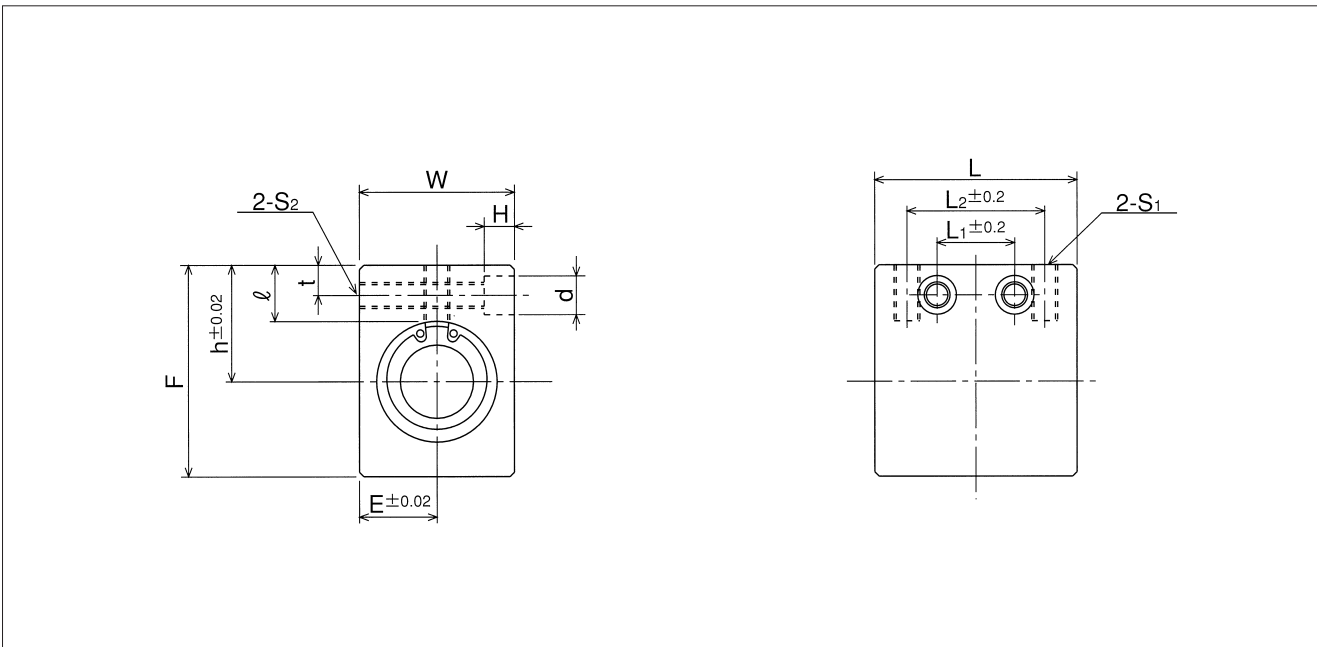
1N≐0.102kgf 1N·m≐0.102kgf·m

# AK TYPE

— Compact Block Type —



part number	major dimensions								
	inner contact diameter		outer dimensions						
	mm	tolerance $\mu\text{m}$	h mm	E mm	W mm	L mm	F mm	L <sub>2</sub> mm	S <sub>1</sub>
AK 6GUU	6	- 9	14	8	16	27	22	18	M 4
AK 8GUU	8		16	10	20	32	26	20	M 5
AK10GUU	10		19	13	26	39	32	27	M 6
AK12GUU	12		20	14	28	40	34	27	M 6
AK13GUU	13		25	15	30	42	43	28	M 6
AK16GUU	16	27	18	36	47	49	32	M 6	
AK20GUU	20	- 10	31	21	42	52	54	36	M 8
AK25GUU	25		37	26	52	69	65	42	M10
AK30GUU	30		40	29	58	74	71	44	M10

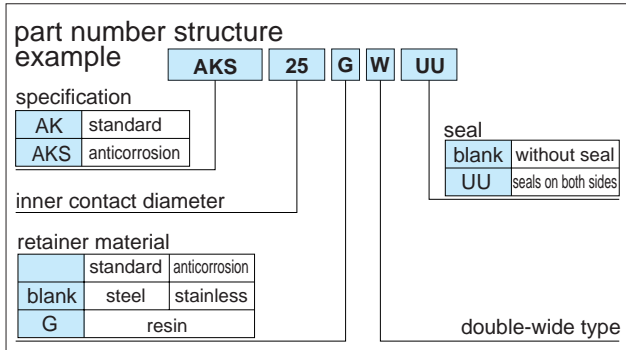
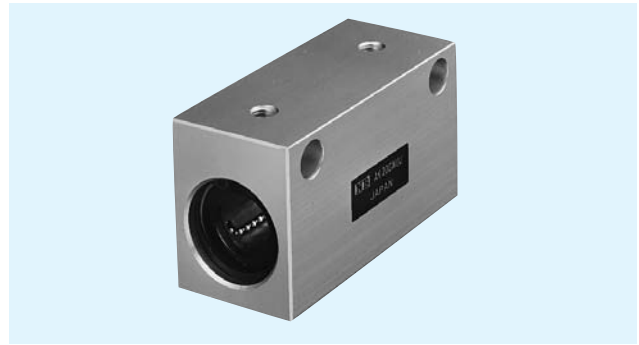


mounting dimensions						basic load rating		mass g	part number
						dynamic C N	static Co N		
$\ell$ mm	$L_1$ mm	$t$ mm	$S_2$	$d$ mm	$H$ mm				
8	9	5	M 4	6	5	206	265	21.5	<b>AK 6GUU</b>
8.5	10	5	M 4	6	5	274	392	40	<b>AK 8GUU</b>
9.5	15	6	M 5	8	6	372	549	80	<b>AK10GUU</b>
9.5	15	6	M 5	8	6	510	784	90	<b>AK12GUU</b>
13.5	16	7	M 6	9	7	510	784	132	<b>AK13GUU</b>
13	18	7	M 6	9	7	774	1,180	204	<b>AK16GUU</b>
15	18	8	M 8	11	8	882	1,370	272	<b>AK20GUU</b>
17	22	9	M10	14	10	980	1,570	574	<b>AK25GUU</b>
17.5	22	9	M10	14	10	1,570	2,740	710	<b>AK30GUU</b>

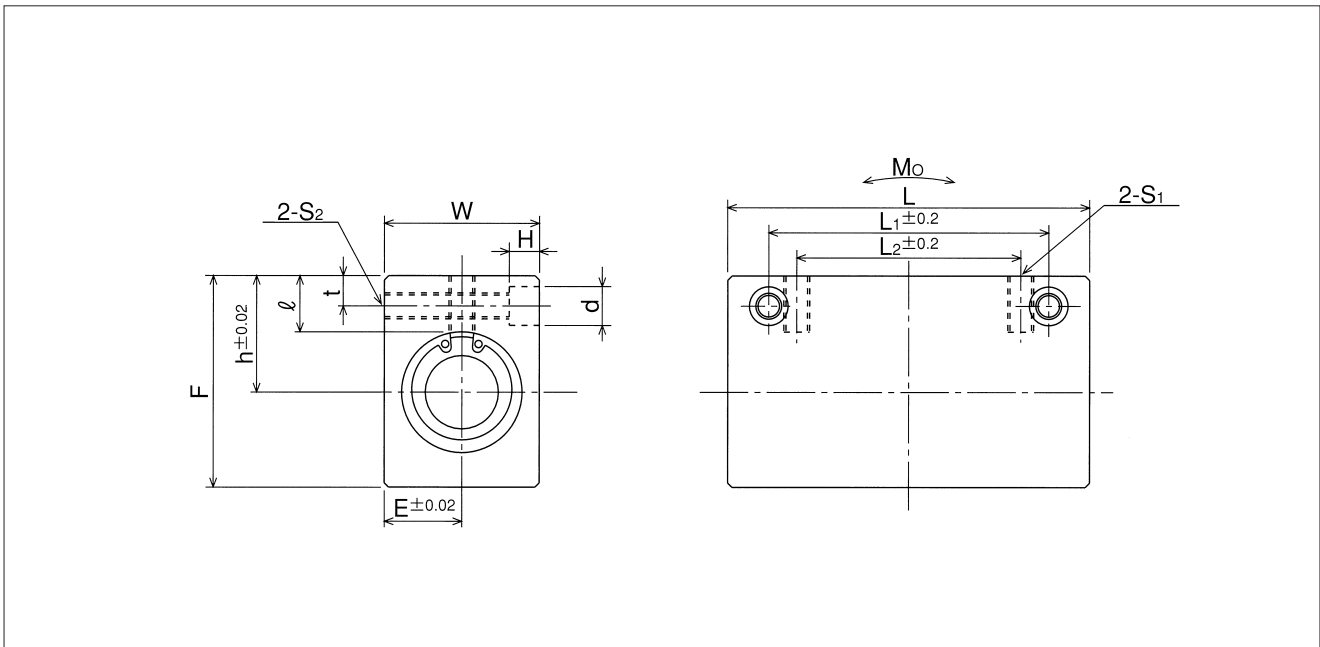
1N  $\approx$  0.102kgf

# AK-W TYPE

– Double-Wide Compact Block Type –



part number	major dimensions									
	inner contact diameter		outer dimensions							
	mm	tolerance $\mu\text{m}$	h mm	E mm	W mm	L mm	F mm	L <sub>2</sub> mm	S <sub>1</sub>	$\ell$ mm
<b>AK 6GWUU</b>	6	- 9	14	8	16	46	22	20	M 4	8
<b>AK 8GWUU</b>	8		16	10	20	56	26	30	M 5	8.5
<b>AK10GWUU</b>	10		19	13	26	68	32	36	M 6	9.5
<b>AK12GWUU</b>	12		20	14	28	70	34	36	M 6	9.5
<b>AK13GWUU</b>	13		25	15	30	74	43	42	M 6	13.5
<b>AK16GWUU</b>	16	27	18	36	84	49	52	M 6	13	
<b>AK20GWUU</b>	20	- 10	31	21	42	94	54	58	M 8	15
<b>AK25GWUU</b>	25		37	26	52	128	65	80	M10	17
<b>AK30GWUU</b>	30		40	29	58	138	71	90	M10	17.5



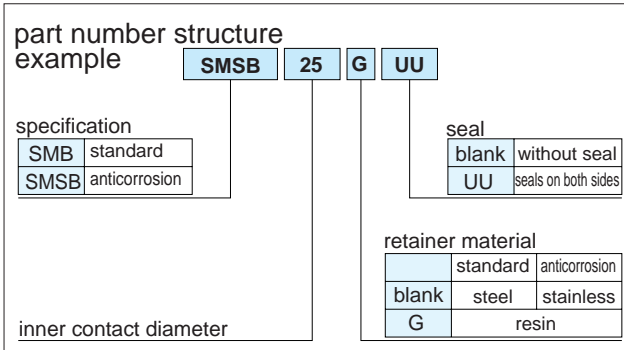
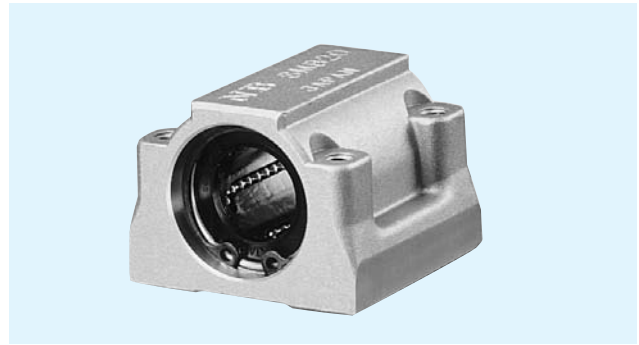
mounting dimensions					basic load rating		allowable static moment Mo N · m	mass g	part number
					dynamic C N	static Co N			
L <sub>1</sub> mm	t mm	S <sub>2</sub>	d mm	H mm					
30	5	M 4	6	5	323	530	2.18	40	<b>AK 6GWUU</b>
42	5	M 4	6	5	431	784	4.31	75	<b>AK 8GWUU</b>
50	6	M 5	8	6	588	1,100	7.24	150	<b>AK10GWUU</b>
50	6	M 5	8	6	813	1,570	10.9	168	<b>AK12GWUU</b>
55	7	M 6	9	7	813	1,570	11.6	248	<b>AK13GWUU</b>
65	7	M 6	9	7	1,230	2,350	19.7	383	<b>AK16GWUU</b>
70	8	M 8	11	8	1,400	2,740	26.8	520	<b>AK20GWUU</b>
100	9	M10	14	10	1,560	3,140	43.4	1,120	<b>AK25GWUU</b>
110	9	M10	14	10	2,490	5,490	82.8	1,384	<b>AK30GWUU</b>

1N ≙ 0.102kgf    1N·m ≙ 0.102kgf·m

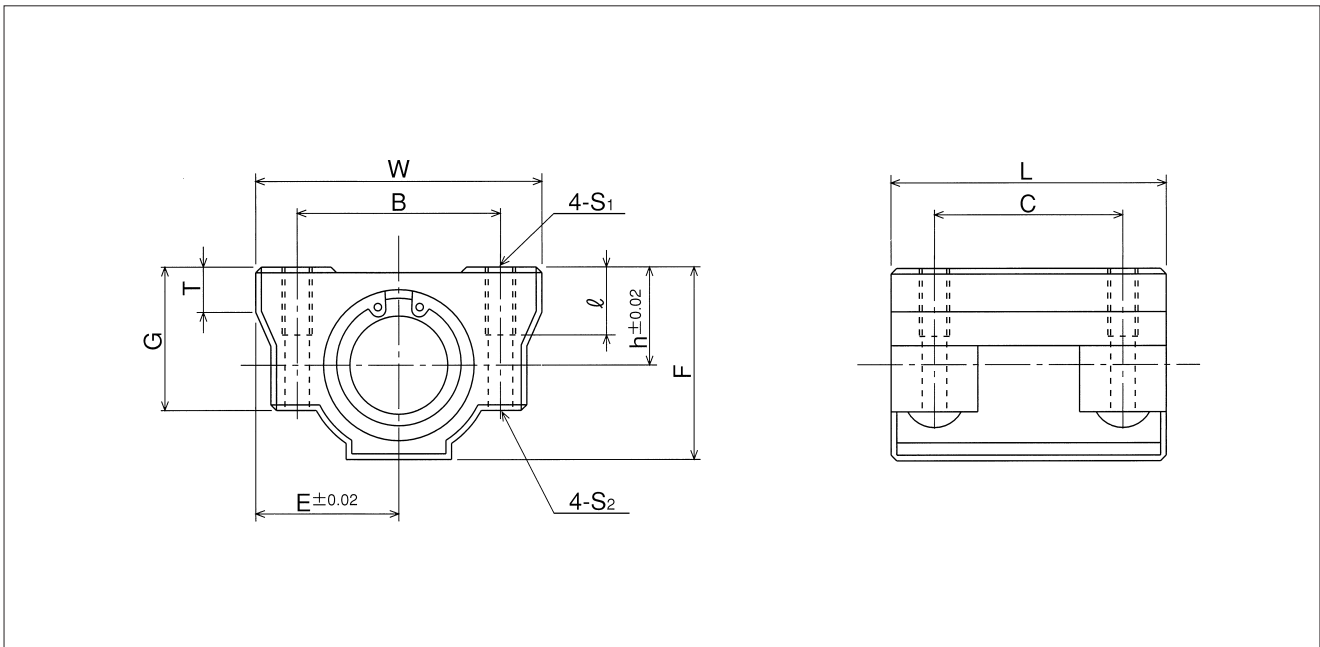


# SMB TYPE

– Block Type –



part number	major dimensions								
	inner contact diameter		outer dimensions						
	mm	tolerance $\mu\text{m}$	h mm	E mm	W mm	L mm	F mm	G mm	T mm
<b>SMB13GUU</b>	13	0	16	22	44	39	31	22	8
<b>SMB16GUU</b>	16	-9	19	25	50	49	37	28	9
<b>SMB20GUU</b>	20	0	21	27	54	55	41	31	11
<b>SMB25GUU</b>	25	-10	26	38	76	73	51	38	12
<b>SMB30GUU</b>	30	-10	30	39	78	80	57	45	15
<b>SMB40GUU</b>	40	0/-12	40	51	102	96	75	59	22

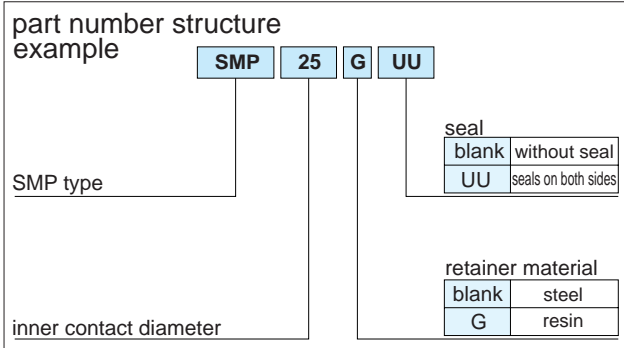
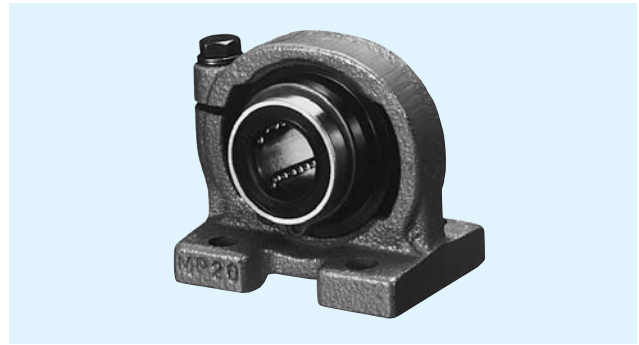


mounting dimensions					basic load rating		mass g	part number
					dynamic C N	static Co N		
B mm	C mm	S <sub>1</sub>	ℓ mm	S <sub>2</sub> mm				
33	26	M 5	10	4.3	510	784	120	<b>SMB13GUU</b>
36	34	M 5	12	4.3	774	1,180	170	<b>SMB16GUU</b>
40	40	M 6	12	5.1	882	1,370	210	<b>SMB20GUU</b>
54	50	M 8	18	6.8	980	1,570	500	<b>SMB25GUU</b>
58	58	M 8	18	6.8	1,570	2,740	600	<b>SMB30GUU</b>
80	60	M10	25	8.6	2,160	4,020	1,200	<b>SMB40GUU</b>

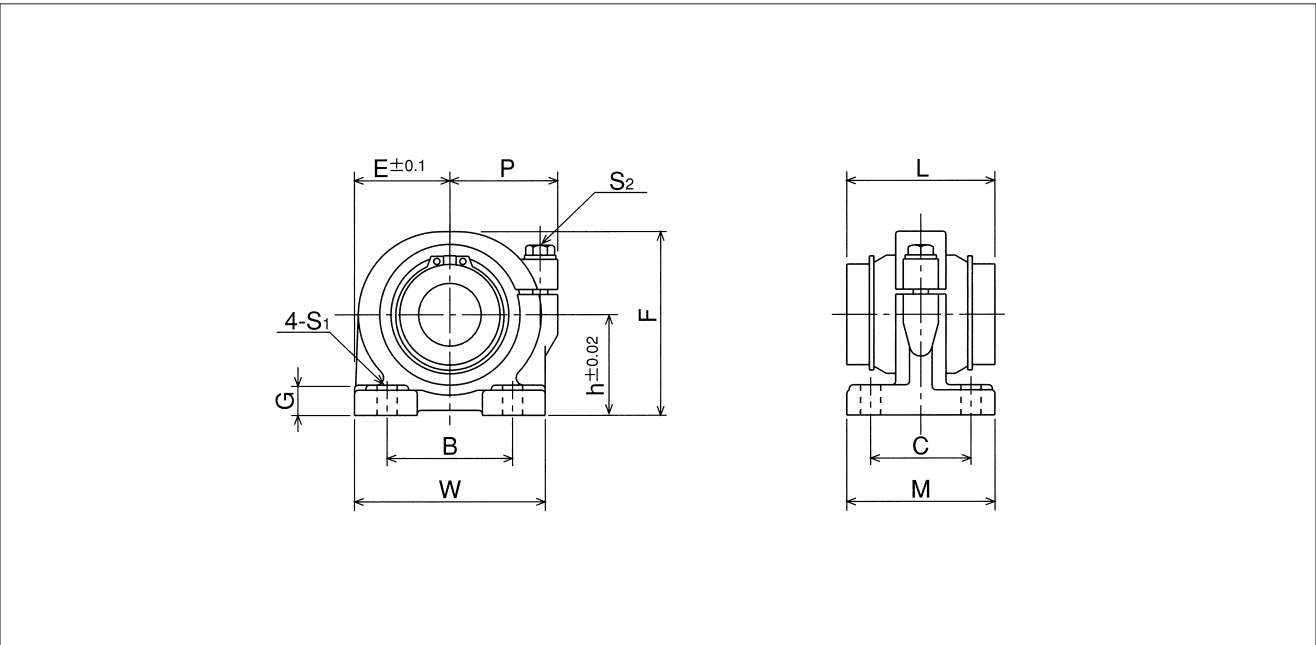
1N ≅ 0.102kgf

# SMP TYPE

– Pillow Block Type –



part number	major dimensions								
	inner contact diameter		outer dimensions						
	mm	tolerance $\mu\text{m}$	h mm	E mm	W mm	L mm	F mm	G mm	M mm
SMP13GUU	13	0	25	25	50	32	46	8	36
SMP16GUU	16	-9	29	27.5	55	37	53	10	40
SMP20GUU	20	0	34	32.5	65	42	62	12	48
SMP25GUU	25	-10	40	38	76	59	73	12	59
SMP30GUU	30	-10	45	42.5	85	64	84	15	69
SMP35GUU	35	0	50	49	98	70	94	15	76
SMP40GUU	40	-12	60	62	124	80	112	18	86
SMP50GUU	50	-12	70	72	144	100	134	20	105
SMP60GUU	60	0/-15	82	84.5	169	110	154	23	115

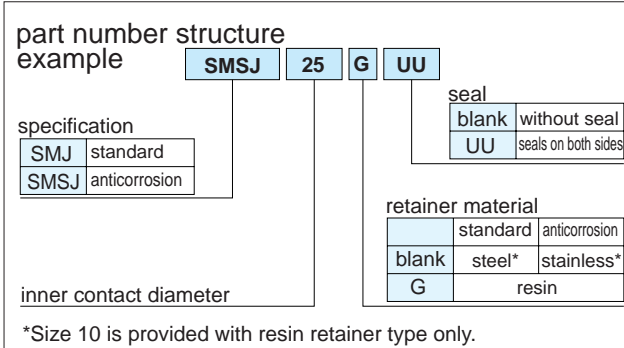
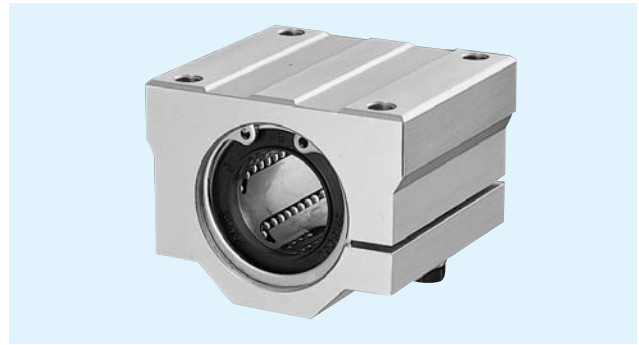


P mm	mounting dimensions			adjustment bolt size $S_2$	basic load rating		mass g	part number
	B mm	C mm	$S_1$ (bolt size) mm		dynamic C N	static $C_o$ N		
30	30	26	7(M 5)	M 5	510	784	270	<b>SMP13GUU</b>
32	35	29	7(M 5)	M 5	774	1,180	380	<b>SMP16GUU</b>
37	40	35	8(M 6)	M 6	882	1,370	680	<b>SMP20GUU</b>
43	50	40	8(M 6)	M 6	980	1,570	1,000	<b>SMP25GUU</b>
49	58	46	10(M 8)	M 8	1,570	2,740	1,400	<b>SMP30GUU</b>
58	62	53	12(M10)	M10	1,670	3,140	2,100	<b>SMP35GUU</b>
68	76	64	12(M10)	M10	2,160	4,020	3,700	<b>SMP40GUU</b>
80	100	70	14(M12)	M12	3,820	7,940	6,100	<b>SMP50GUU</b>
88	115	80	14(M12)	M12	4,700	10,000	8,700	<b>SMP60GUU</b>

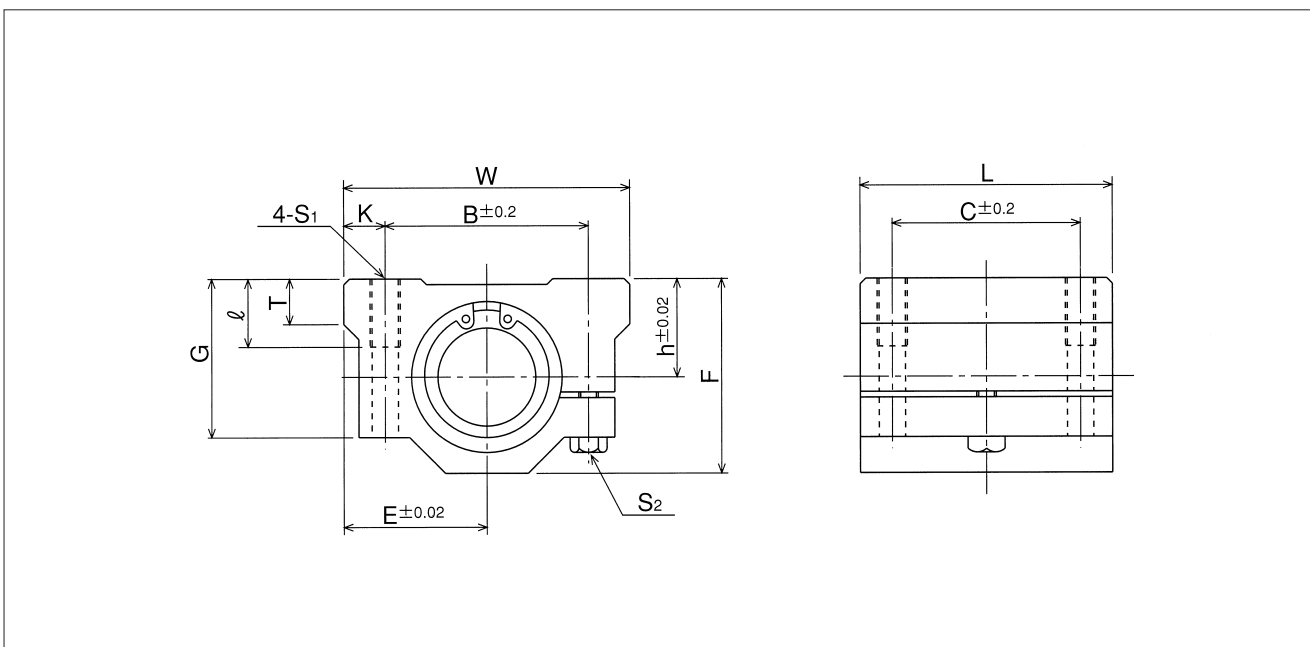
1N  $\approx$  0.102kgf

# SMJ TYPE

– Clearance Adjustable Type –



part number	major dimensions								
	inner contact diameter mm	outer dimensions							
		h mm	E mm	W mm	L mm	F mm	G mm	T mm	B mm
SMJ10GUU*	10	13	20	40	35	26	21	8	28
SMJ12GUU	12	15	21	42	36	28	24	8	30.5
SMJ13GUU	13	15	22	44	39	30	24.5	8	33
SMJ16GUU	16	19	25	50	44	38.5	32.5	9	36
SMJ20GUU	20	21	27	54	50	41	35	11	40
SMJ25GUU	25	26	38	76	67	51.5	42	12	54
SMJ30GUU	30	30	39	78	72	59.5	49	15	58
SMJ35GUU	35	34	45	90	80	68	54	18	70
SMJ40GUU	40	40	51	102	90	78	62	20	80
SMJ50GUU	50	52	61	122	110	102	80	25	100
SMJ60GUU	60	58	66	132	122	114	94	30	108

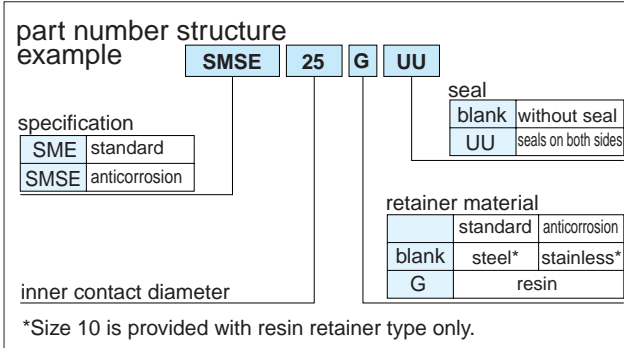


mounting dimensions				adjusting bolt size $S_2$	basic load rating		mass g	part number
C mm	K mm	$S_1$	$\ell$ mm		dynamic C N	static $C_o$ N		
21	6	M 5	12	M 4	372	549	92	<b>SMJ10GUU</b>
26	5.75	M 5	12	M 4	510	784	102	<b>SMJ12GUU</b>
26	5.5	M 5	12	M 4	510	784	120	<b>SMJ13GUU</b>
34	7	M 5	12	M 4	774	1,180	200	<b>SMJ16GUU</b>
40	7	M 6	12	M 5	882	1,370	255	<b>SMJ20GUU</b>
50	11	M 8	18	M 6	980	1,570	600	<b>SMJ25GUU</b>
58	10	M 8	18	M 6	1,570	2,740	735	<b>SMJ30GUU</b>
60	10	M 8	18	M 6	1,670	3,140	1,100	<b>SMJ35GUU</b>
60	11	M10	25	M 8	2,160	4,020	1,590	<b>SMJ40GUU</b>
80	11	M10	25	M 8	3,820	7,940	3,340	<b>SMJ50GUU</b>
90	12	M12	25	M10	4,700	10,000	4,270	<b>SMJ60GUU</b>

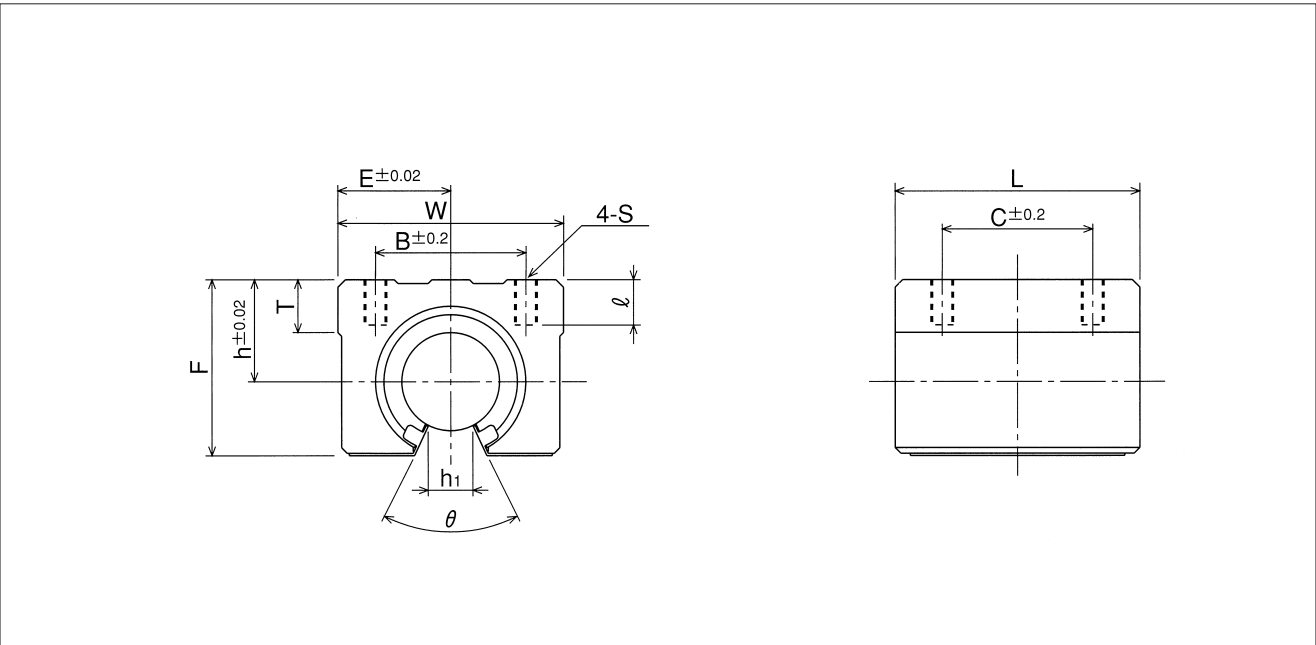
1N  $\approx$  0.102kgf

# SME TYPE

– Open Block Type –



part number	major dimensions							
	inner contact diameter mm	h mm	E mm	W mm	L mm	F mm	T mm	h <sub>1</sub> mm
SME10GUU*	10	15	18	36	32	24	7	6
SME13GUU	13	17	20	40	39	28	8	8.5
SME16GUU	16	20	22.5	45	45	33	9	10
SME20GUU	20	23	24	48	50	39	11	10
SME25GUU	25	27	30	60	65	47	14	11.5
SME30GUU	30	33	35	70	70	56	15	14
SME35GUU	35	37	40	80	80	63	18	16
SME40GUU	40	42	45	90	90	72	20	19
SME50GUU	50	53	60	120	110	92	25	23



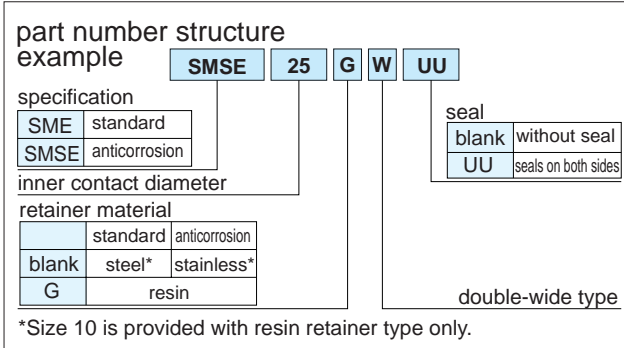
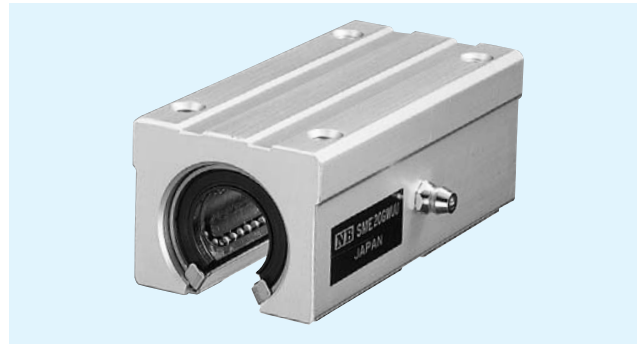
$\theta$	mounting dimensions				basic load rating		mass g	part number
	B mm	C mm	S	$\ell$ mm	dynamic C N	static Co N		
80°	25	20	M 5	10	372	549	65	<b>SME10GUU</b>
80°	28	26	M 5	10	510	784	100	<b>SME13GUU</b>
80°	32	30	M 5	12	774	1,180	150	<b>SME16GUU</b>
60°	35	35	M 6	12	882	1,370	200	<b>SME20GUU</b>
50°	40	40	M 6	12	980	1,570	450	<b>SME25GUU</b>
50°	50	50	M 8	18	1,570	2,740	630	<b>SME30GUU</b>
50°	55	55	M 8	18	1,670	3,140	925	<b>SME35GUU</b>
50°	65	65	M10	20	2,160	4,020	1,330	<b>SME40GUU</b>
50°	94	80	M10	20	3,820	7,940	3,000	<b>SME50GUU</b>

1N≐0.102kgf

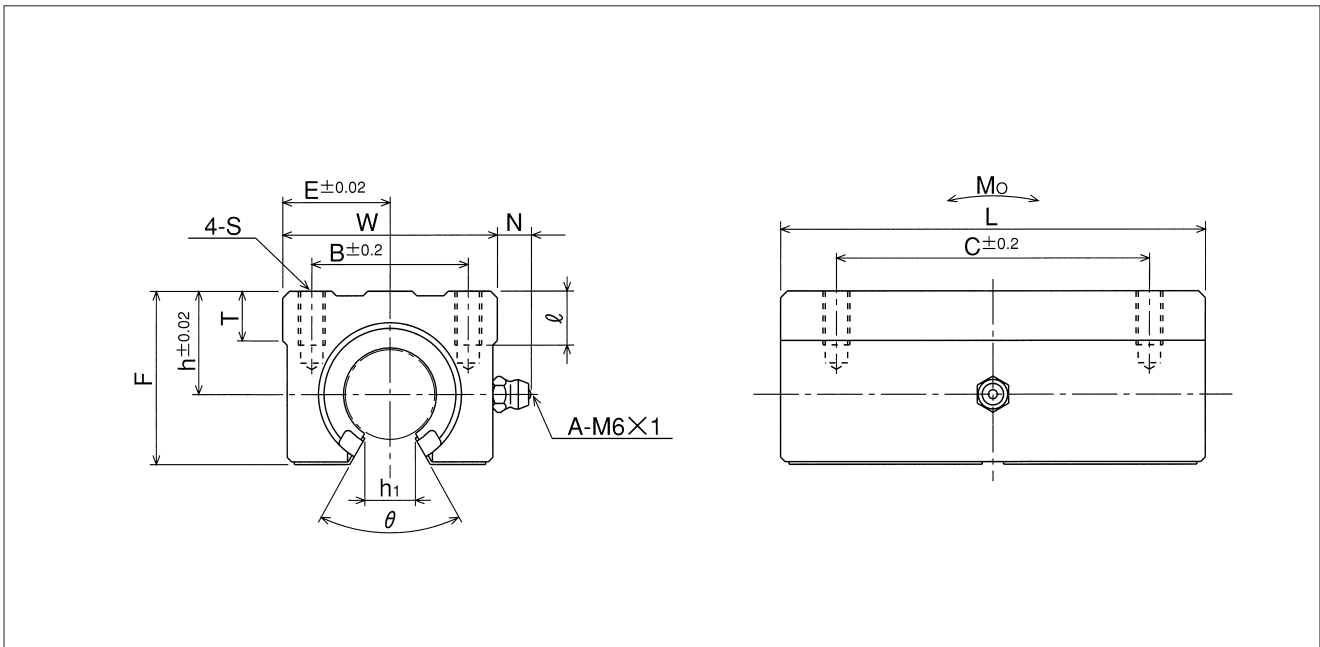


# SME-W TYPE

– Double-wide Open Block Type –



part number	major dimensions								
	inner contact diameter mm	outer dimensions							
		h mm	E mm	W mm	L mm	F mm	T mm	N mm	h <sub>1</sub> mm
<b>SME10GWUU*</b>	10	15	18	36	65	24	7	7.5	6
<b>SME13GWUU</b>	13	17	20	40	75	28	8	7.5	8.5
<b>SME16GWUU</b>	16	20	22.5	45	85	33	9	7.5	10
<b>SME20GWUU</b>	20	23	24	48	95	39	11	7.5	10
<b>SME25GWUU</b>	25	27	30	60	130	47	14	7.5	11.5
<b>SME30GWUU</b>	30	33	35	70	140	56	15	7.5	14

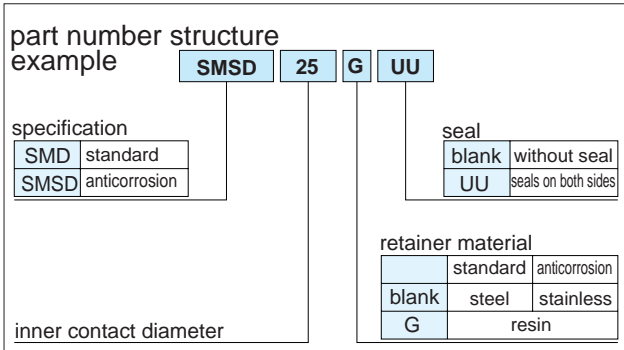


$\theta$	mounting dimensions				basic load rating		allowable static moment $M_o$ N·m	mass g	part number
	B mm	C mm	S	$\ell$ mm	dynamic C N	static $C_o$ N			
80°	25	40	M5	10	588	1,100	4.63	140	<b>SME10GWUU</b>
80°	28	50	M5	10	813	1,570	7.42	200	<b>SME13GWUU</b>
80°	32	60	M5	12	1,230	2,350	12.6	300	<b>SME16GWUU</b>
60°	35	70	M6	12	1,400	2,740	14.5	400	<b>SME20GWUU</b>
50°	40	90	M6	12	1,560	3,140	24.7	900	<b>SME25GWUU</b>
50°	50	100	M8	18	2,490	5,490	47.2	1,260	<b>SME30GWUU</b>

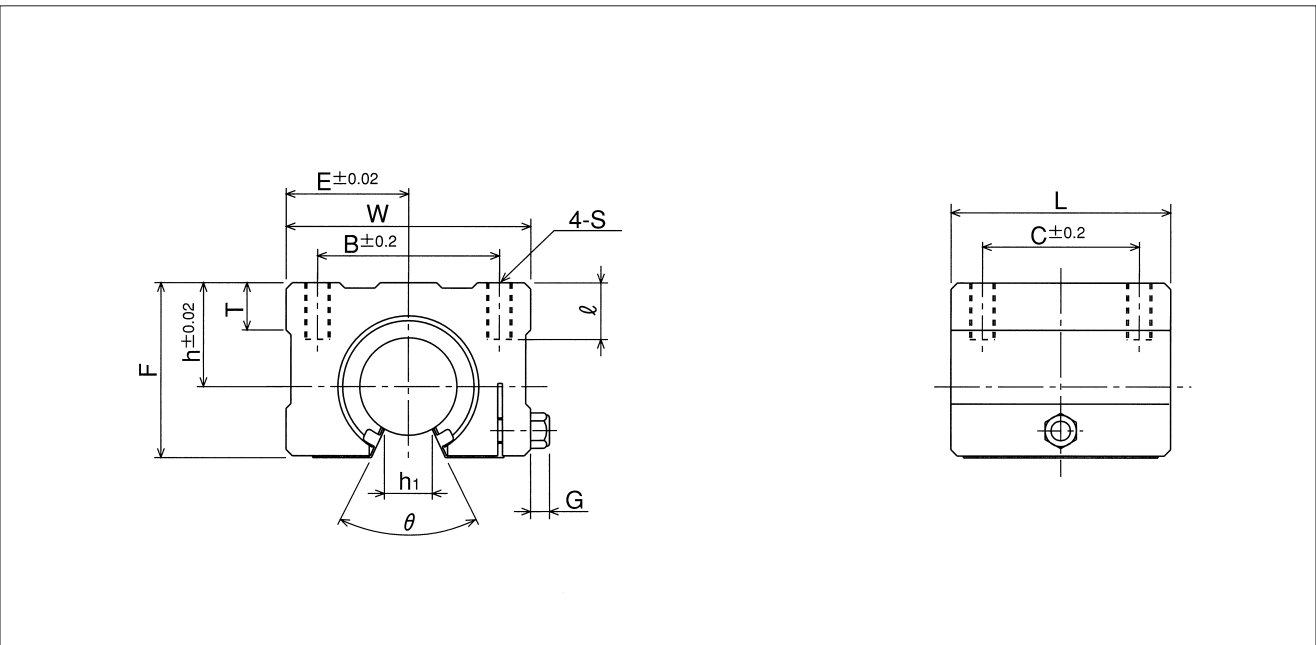
1N  $\approx$  0.102kgf    1N·m  $\approx$  0.102kgf·m

# SMD TYPE

— Open Block with Clearance Adjustable Type —



part number	inner contact diameter mm	major dimensions							
		outer dimensions							
		h mm	E mm	W mm	L mm	F mm	T mm	G mm	h <sub>1</sub> mm
<b>SMD16GUU</b>	16	20	25	50	45	33	9	6	10
<b>SMD20GUU</b>	20	23	27	54	50	39	11	7	10
<b>SMD25GUU</b>	25	27	38	76	65	47	14	7	11.5
<b>SMD30GUU</b>	30	33	39	78	70	56	15	7	14

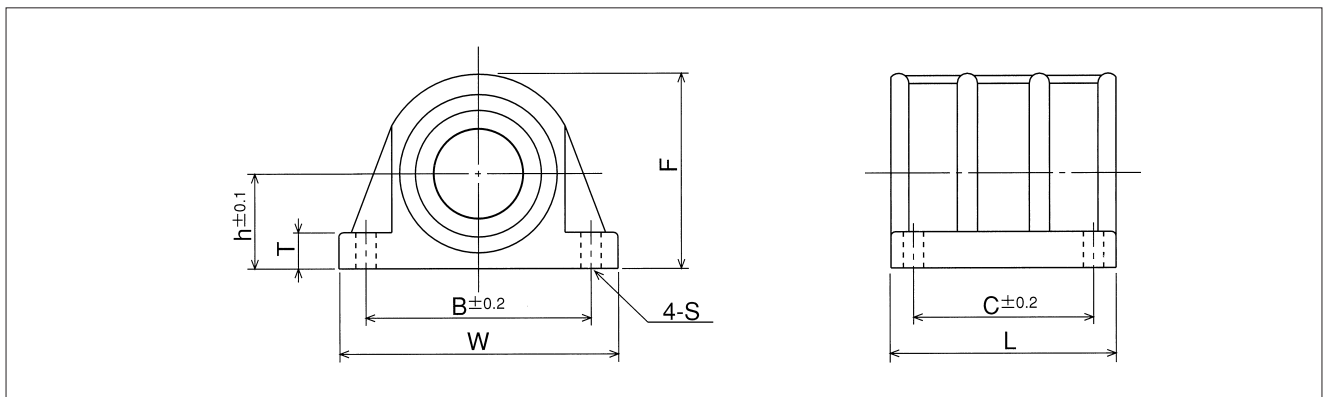
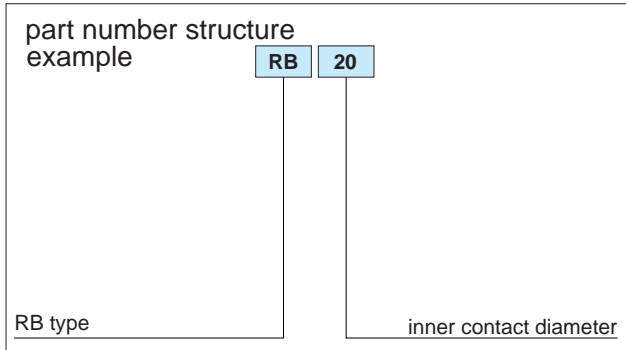
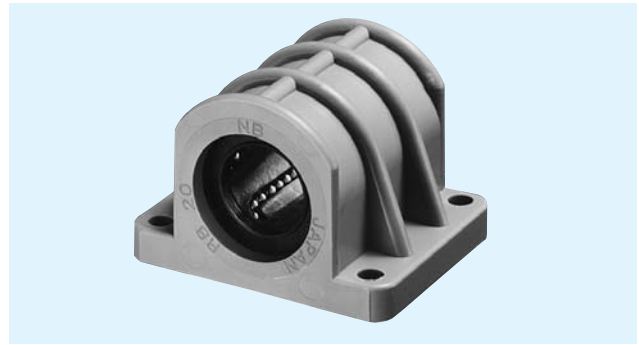


$\theta$	mounting dimensions				basic load rating		mass g	part number
	B mm	C mm	S	$l$ mm	dynamic C N	static Co N		
80°	36	30	M5	12	774	1,180	170	<b>SMD16GUU</b>
60°	40	35	M6	12	882	1,370	240	<b>SMD20GUU</b>
50°	54	40	M6	12	980	1,570	580	<b>SMD25GUU</b>
50°	58	50	M8	18	1,570	2,740	720	<b>SMD30GUU</b>

1N  $\approx$  0.102kgf

# RB TYPE

— Resin Block Type —



part number	major dimensions										basic load rating		mass
	inner contact diameter		outer dimensions				dimension				dynamic	static	
	mm	tolerance μm	h mm	W mm	L mm	F mm	T mm	B mm	C mm	S mm	C N	Co N	
<b>RB10</b>	10	0 -9	13	45	35	26.5	6	35	21	4.5	372	549	43
<b>RB12</b>	12		15	50	36	30	6.5	40	26	4.5	510	784	50
<b>RB13</b>	13		15	50	39	31	6.5	40	26	4.5	510	784	63
<b>RB16</b>	16		19	56	44	38.5	7	46	34	4.5	774	1,180	99
<b>RB20</b>	20		0/-10	21	62	50	43	8	50	40	5.5	882	1,370

(RB type has side-seals as standard.)

1N≒0.102kgf