

Alwayse Ball Transfer Stands...



..helps manoeuvre heavy work-loads in safer conditions.

Alwayse Ball Transfer Stands allow operators to move heavy material on Ball Units. Essential for big areas where Transfer Tables are not an option. Stands are available for most types of Ball Units. Each Stand can be individually adjusted for accurate alignment. Robustly constructed, and made of heavy gauge mild steel tube. The Stands need to be positioned not less than 60cms centres to enable the operator to pass between them. It is also important for operators to move up close to machinery in safety. Typical applications include handling plate or sheet steel for a guillotine or press brake. Large fabrications can also be easily manoeuvred on ball stands.



 **ALWAYSE**
ENGINEERING LIMITED

Where engineering excellence *always* comes first



Alwaysse Ball Transfer Stand Specifications



1 1/4" (32 mm) Ball Transfer Stand

Mild steel tube 2 3/8" (60 mm) outside diameter x 2" (50 mm) inside diameter.
 Thread 1 1/2" B.S.P.
 Available in any height, 68cms is typical, but any length is available.
 Adjustment plus/minus (38 mm).
 Capacity (250 kgs).

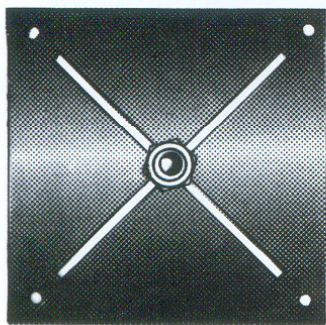
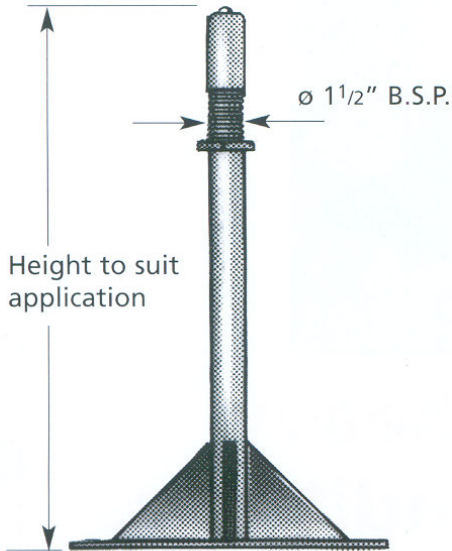
2" (50 mm) Ball Transfer Stand

Mild steel tube 3" (76 mm) outside diameter x 2 1/2" (64 mm) inside diameter.
 Thread 2 1/2" B.S.P.
 Available in any height, 68cms is typical, but any length is available.
 Adjustment plus/minus (38 mm).
 Capacity (340 kgs).

ø 1 1/4" (32mm) Ball-250 kgs.



No. 1029 - Type 21

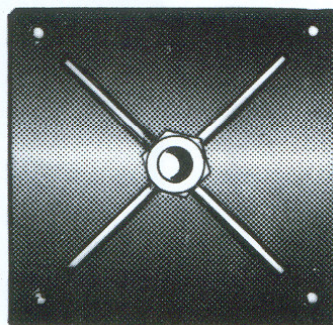
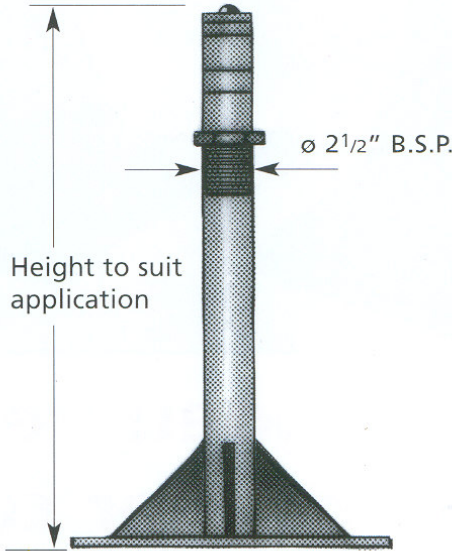


35 cms

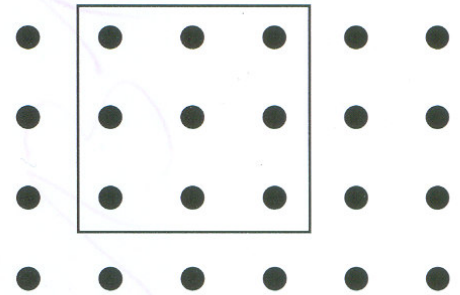
ø 2" (50 mm) Ball-340 kgs.



No. 4004 (modified)



35 cms



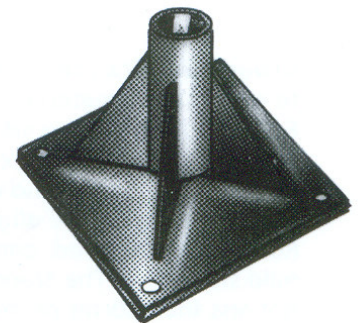
Minimum load dimension should be not less than the pitch of 4 stands.

Safety Note:-

Where there is a possibility of loads rolling off, safety rails should be fitted.

Also note, on knocking over stands not fixed to floor, please ask for advice.

Detachable post as an option to easily move away from work areas.



Floor Mounting Plate

Size 35cms x 35cms

Call us today for FREE expert advice.



ALWAYSE
ENGINEERING LIMITED

